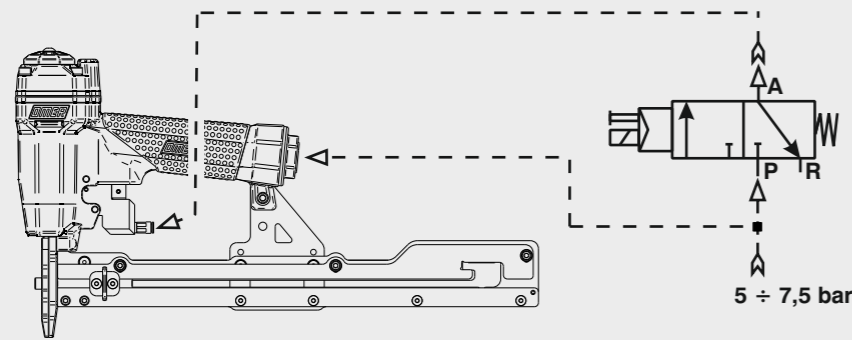


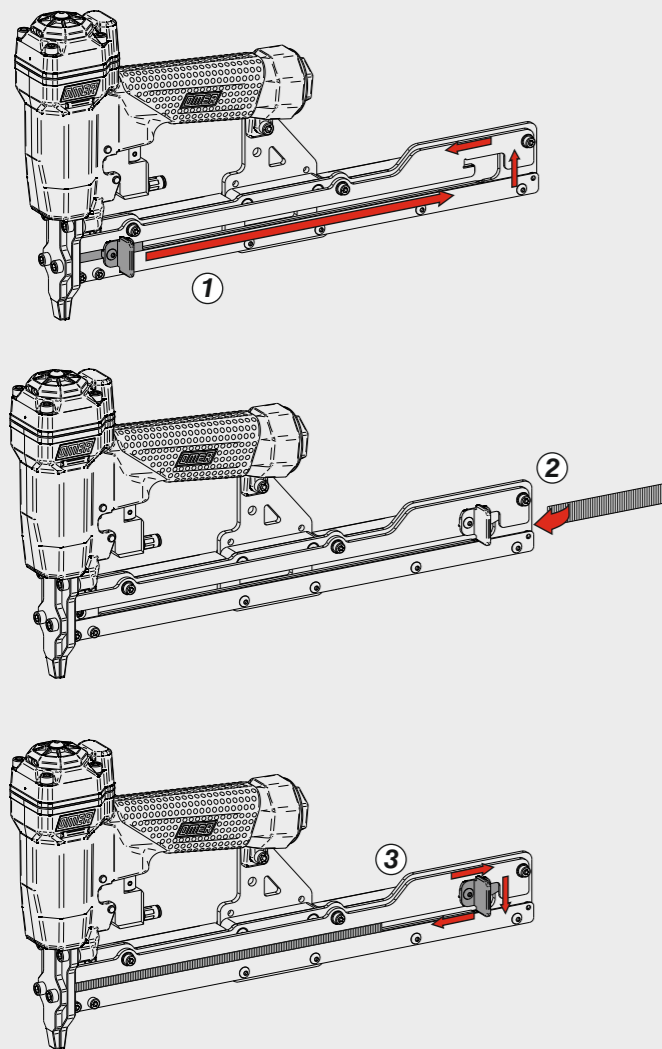
## Schema di collegamento - Connecting diagram



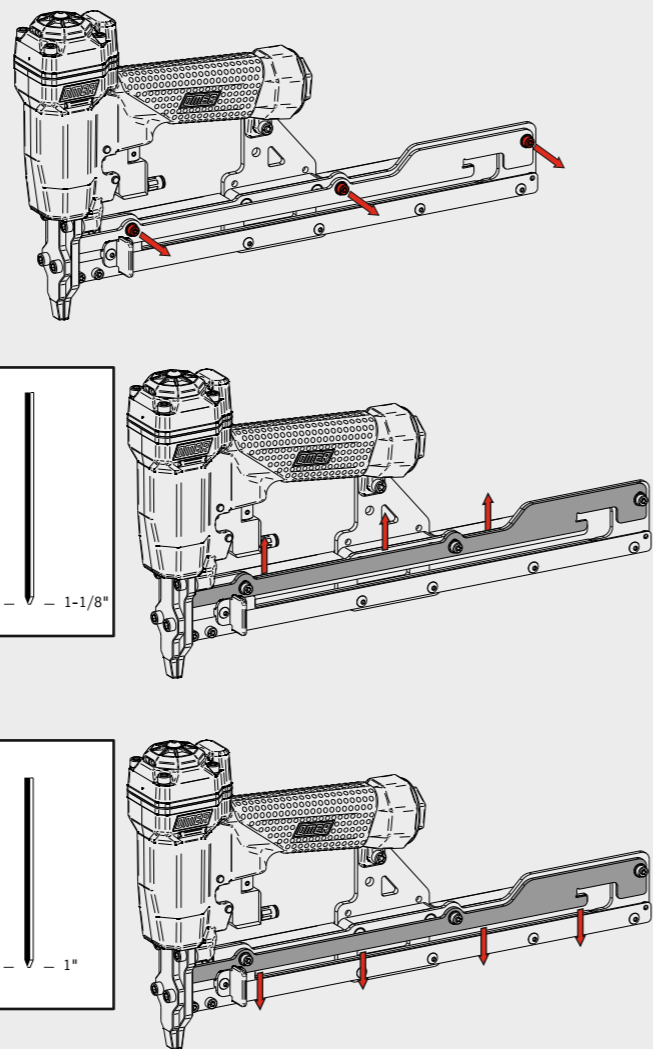
Valvola 3/2 NC  
Valve 3/2 NC

5 ÷ 7,5 bar

Caricamento - Loading - Laden - Chargement - Carga  
Γέμισμα - Carregamento - Laden - Yükleme  
Laddning - Plnění - Plnenie



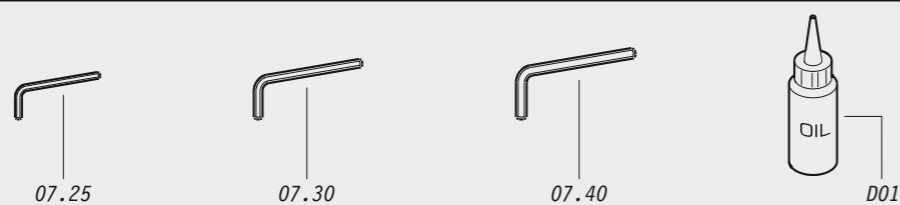
Regolazioni  
Adjustments



28 — — 1-1/8"

25 — — 1"

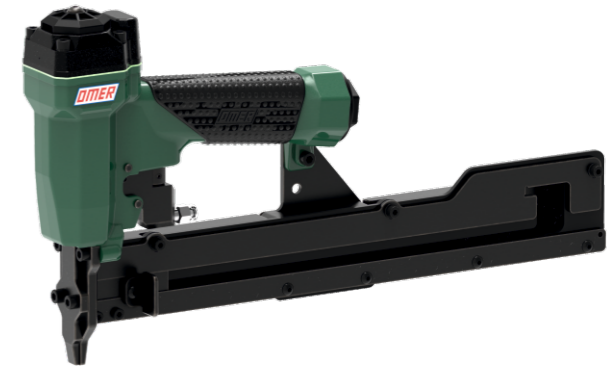
Dotazioni - Equipment - Ausstattung - Outillage - Dotaciones - Εξοπλισμός  
Dotações - Uitrusting - Donanımlar - Utrustning - Vybavení - Vybava



# OMER

Manuale d'uso, manutenzione e parti di ricambio  
Manual for use, maintenance and spare parts  
Bedienungs- und Wartungshandbuch sowie Ersatzteilliste  
Mode d'emploi, de maintenance et pièces de rechange  
Manual de uso, mantenimiento y recambios  
Εγχειρίδιο χρήσης, συντήρησης και ανταλλακτικών  
Manual de uso, manutenção e peças sobresselentes  
Handleiding voor gebruik, onderhoud en wisselstukken  
Kullanım, bakım ve yedek parça kılavuzu  
Användar-, underhålls- och reservdelshandbok  
Návod k používání a údržbě a náhradní díly  
Návod na obsluhu, údržbu a náhradné diely

Parte 2  
Part 2  
Teil 2  
Partie 2  
Part 2  
Μέρος 2  
Parte 2  
Deel 2  
Kisim 2  
Del 2  
Část 2  
Čast 2



## RI.228 CL2-3

cod. 12206510-3



### Dati tecnici

Technical data  
Technische Daten  
Tehniska data

### Caractéristiques techniques

Datos técnicos  
Τεχνικά χαρακτηριστικά  
Technické údaje

### Dados técnicos

Technische gegevens  
Teknik veriler  
Technické údaje

### Misure impiegabili

Lengths  
Verwendbare Nagellänge  
Dimensioner som kan användas

### Dimensions utiles

Medidas de longitud  
Μήκος Αναλωσίμου  
Prípustné rozměry

### Medidas utilizáveis

Toepasbare afmetingen  
Boy  
Použitelné rozmery

mm 25÷28  
inch 1"÷1-1/8"

Capacità caricatore n° punti  
Magazine capacity  
Magazinkapazität: Nägel  
Magasinkapacitet: Antal punkter

Capacité chargeur n° de points  
Capacidad cargador n° puntos  
Δυνατότητα γεμιστερα  
Kapacita zásobníku p. spôn

Capacidade carregador n° pontos  
Capaciteit magazijn in aantal spijkers  
Dergi kapasitesi  
Kapacita zásobníku p. spôn

210

Pressione d'esercizio  
Operating pressure  
Betriebsdruck  
Drifttryck

Pression d'exercice  
Presión de servicio  
Πίεση λειτουργίας  
Pracovní tlak

Pressão de serviço  
Werkdruk  
Çalışma basıncı  
Prevádzkový tlak

bar 5÷7,5  
psi 70÷105

### Consumo aria

Air consumption  
Luftverbrauch  
Luftförbrukning

Consumation d'air  
Consumo aire  
Κατανάλωση αέρα  
Spotreba vzduchu

Consumo ar  
Luchtverbruik  
Hava tüketimi  
Spotreba vzduchu

lt/colpo 0,34  
ft<sup>3</sup>/cycle 0,01199

### Peso

Weight  
Gewicht  
Vikt

### Poids

Peso  
Βάρος  
Hmotnost

### Peso

Gewicht  
Ağırlık  
Hmotnost

kg 1,85  
lbs 4,08

### Dimensioni

Dimensions  
Abmessungen  
Dimensioner (AxBxH)

### Dimensions

Dimensiones  
Διαστάσεις  
Rozměry

### Dimensões

Afmetingen  
Boyutlar  
Rozmery

mm 388x50x215  
inch 15-1/4"x2"x8-7/16"  
(LxWxH)

EN 12549 :2009 EN ISO 3746 :2011 EN ISO 4871 :2009

### Potenza sonora emessa

Sound power emitted  
Emitierte Schalleistung  
Avgiven ljudeffekt

### Puissance sonore émise

Potencia sonora emitida  
Εκτεμπόμενη ηχητική ισχύς  
Emitovaný akustický tlak

### Potência sonora emitida

Geëmitteerd geluidsvermogen  
Çıkan ses gücü (ses desibeli)  
Výstupný akustický výkon

dB(A) 89

(K= 4 dB)

### Pins I

1x1,25

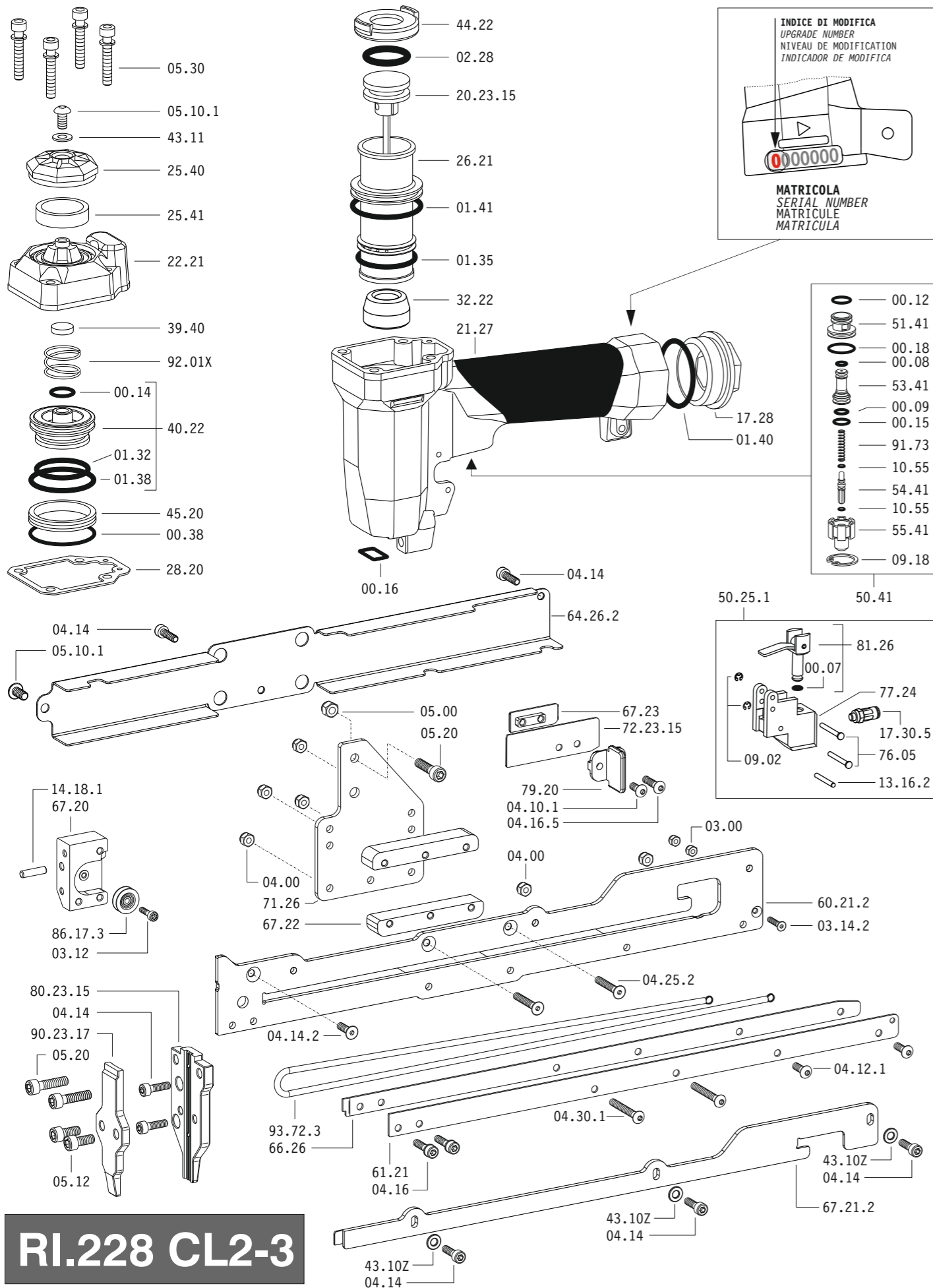


Gauge: 18

12206510-3\_RI228CL2-3\_2\_rev22\_05/11/2024 MG

DO NOT  
HANDHELD  
THIS TOOL



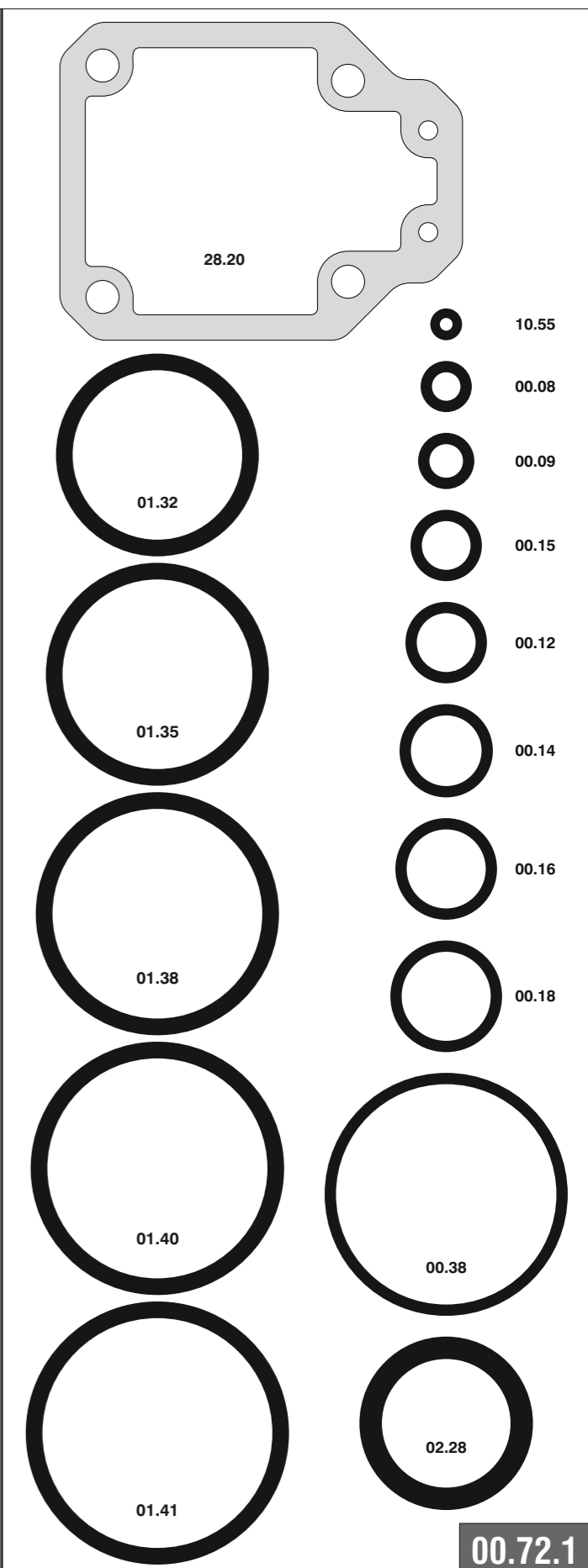


**RI.228 CL2-3**

cod. 12206510-3

Cod.	Descrizione	Description
00.07	O-Ring	O-Ring
00.08	O-Ring	O-Ring
00.09	O-Ring	O-Ring
00.12	O-Ring	O-Ring
00.14	O-Ring	O-Ring
00.15	O-Ring	O-Ring
00.16	O-Ring	O-Ring
00.18	O-Ring	O-Ring
00.38	O-Ring	O-Ring
01.32	O-Ring	O-Ring
01.35	O-Ring	O-Ring
01.38	O-Ring	O-Ring
01.40	O-Ring	O-Ring
01.41	O-Ring	O-Ring
02.28	O-Ring	O-Ring
03.00	Dado	Nut
03.12	Vite	Screw
03.14.2	Vite	Screw
04.00	Dado	Nut
04.10.1	Vite	Screw
04.12.1	Vite	Screw
04.14	Vite	Screw
04.14.2	Vite	Screw
04.16	Vite	Screw
04.16.5	Vite	Screw
04.25.2	Vite	Screw
04.30.1	Vite	Screw
05.00	Dado	Nut
05.10.1	Vite	Screw
05.12	Vite	Screw
05.20	Vite	Screw
05.30	Vite	Screw
07.25	Chiave esagonale	Hex. bar wrench
07.30	Chiave esagonale	Hex. bar wrench
07.40	Chiave esagonale	Hex. bar wrench
09.02	Anello elastico	Elastic ring
09.18	Anello elastico	Elastic ring
10.55	O-Ring	O-Ring
13.16.2	Spina	Pin
14.18.1	Spina	Pin
17.28	Tappo	Inlet cap
17.30.5	Raccordo	Air plug
21.27	Corpo	Body
22.21	Testa	Head
25.40	Deflettore	Exhaust deflector
25.41	Silenziatore	Silencer
26.21	Cilindro	Cylinder
28.20	Guarnizione testa	Head gasket
32.22	Ammortizzatore	Bumper
39.40	Guarnizione scarico	Exhaust seal
40.22	Valvola completa	Valve ass'y
43.10Z	Rondella	Washer
43.11	Rondella	Washer
44.22	Guarnizione	Gasket
45.20	Anello valvola	Ring
50.25.1	Comando a distanza	Tremote trigger
50.41	Pulsante completo	Trigger valve ass'y
51.41	Boccola pulsante	Trigger valve housing
53.41	Pistone servovalvola	Valve piston
54.41	Pulsante	Trigger Valve
55.41	Raccordo pulsante	Bush
60.21.2	Guida sinistra	Left guide
61.21	Guida destra	Right guide
64.26.2	Carter	Carter
66.26	Distanziale	Spacer
67.20	Supporto	Support
67.21.2	Guida superiore	Upper guide
67.22	Distanziale	Spacer
67.23	Guida	Guide
71.26	Reggicaricatore	Support
76.05	Perno	Pin
77.24	Guida sicura	Safety trigger
79.20	Leva	Lever
81.26	Pistoncino	Piston
86.17.3	Carrucola	Pulley
91.73	Molla	Spring
92.01X	Molla	Spring
93.44	Molla	Spring
93.72.3	Molla	Spring
20.23.15	Battente	Driver
72.23.15	Spingipunto	Pusher
80.23.15	Controtestina	Nose
90.23.17	Testina	Nose plate
D01	Bocchetta olio	Oiler

Guarnizioni - O-Rings - Dichtungen - Juntas - Διακόλιος στεγανοποίησης  
Vedantes - O-ringen - Contalar - O-ringar - Těsnění - Tesnenia



**RI.228 CL2-3**

cod. 12206510-3

Indice di modifica  
Upgrade number

**2**

Disincemento - Jam clearing - Staubeseitigung - Décoincement - Desatascamiento - Απεμπλοκή  
Desencravamento - Deblokkering bij vastlopen - Sikişma giderme - Rensning av igensättningar

