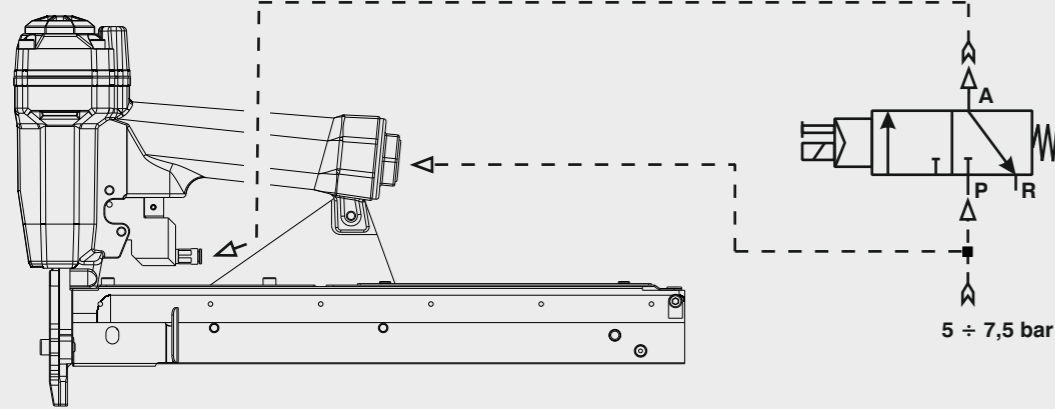


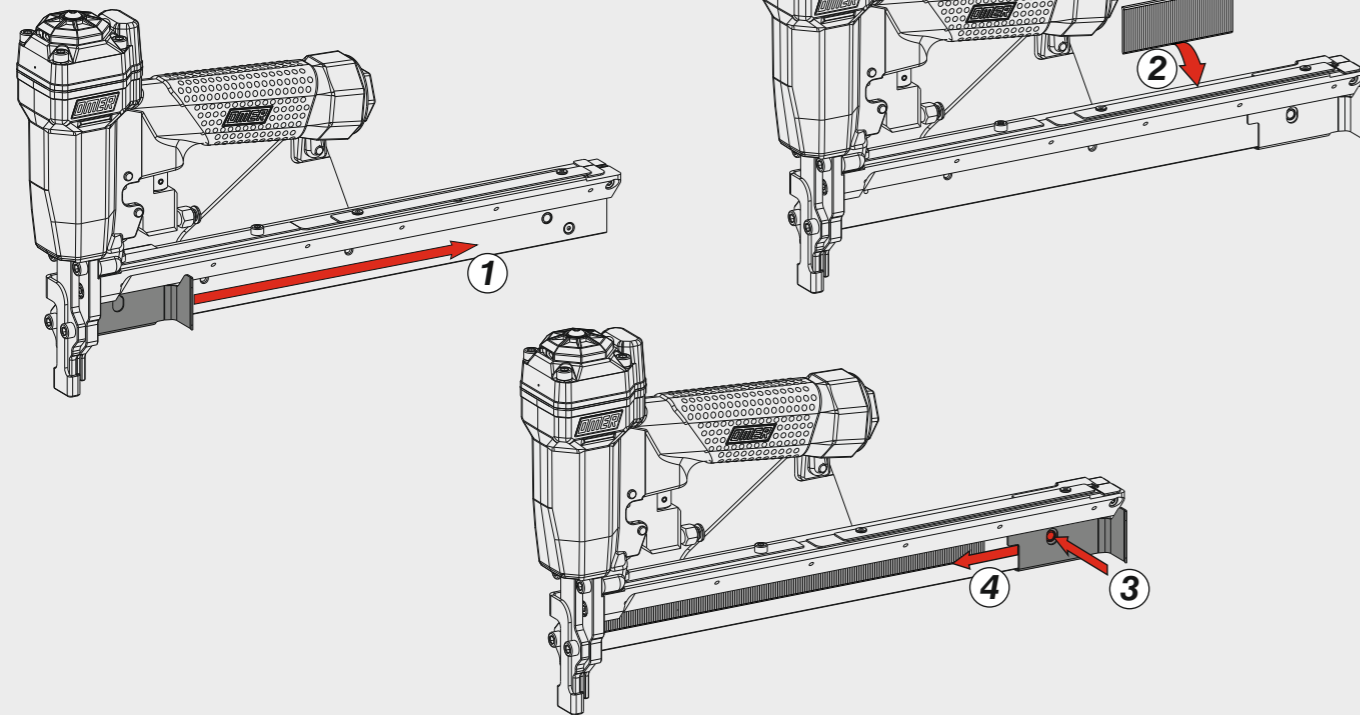
Schema di collegamento - Connecting diagram

Valvola 3/2 NC
Valve 3/2 NC



Caricamento - Loading - Laden - Chargement - Carga - Γέμισμα - Carregamento - Laden - Yükleme - Laddning - Plnění - Plnenie

Caricamento da sopra
Top load magazine



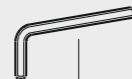
Dotazioni - Equipment - Ausstattung - Outillage - Dotaciones - Εξοπλισμός
Dotações - Uitrusting - Donanımlar - Utrustning - Vybavení - Vybava



07.25



07.30



07.40



D01

OMER

Manuale d'uso, manutenzione e parti di ricambio
Manual for use, maintenance and spare parts
Bedienungs- und Wartungshandbuch sowie Ersatzteilleiste
Mode d'emploi, de maintenance et pièces de rechange
Manual de uso, mantenimiento y recambios
Εγχειρίδιο χρήσης, συντήρησης και ανταλλακτικών
Manual de uso, manutenção e peças sobresselentes
Handleiding voor gebruik, onderhoud en wisselstukken
Kullanım, bakım ve yedek parça kılavuzu
Användar-, underhålls- och reservdelshandbok
Návod k používání a údržbě a náhradní díly
Návod na obsluhu, údržbu a náhradné diely

Parte 2
Part 2
Teil 2
Partie 2
Part 2
Μέρος 2
Parte 2
Deel 2
Kisim 2
Del 2
Část 2
Čast 2



12.40 CL2-3

cod. 12212540-3



Dati tecnici

Technical data
Technische Daten
Tehniska data

Caractéristiques techniques

Datos técnicos
Τεχνικά χαρακτηριστικά
Technické údaje

Dados técnicos

Technische gegevens
Teknik veriler
Technické údaje

Misure impiegabili

Lengths
Verwendbare Nagellänge
Dimensioner som kan användas

Dimensions utiles
Medidas de longitud
Μήκος Αναλωσίμου
Prípustné rozměry

Medidas utilizáveis
Toepasbare afmetingen
Boy
Použitelné rozmery

mm
inch

12 ÷ 40
1/2" ÷ 1-9/16"

Capacità caricatore n° punti
Magazine capacity
Magazinkapazität Nägel
Magasinkapacitet Antal punkter

Capacité chargeur n° de points
Capacidad cargador n° puntos
Δυνατότητα γεμιστερα
Kapacita zásobníku p. sponek

Capacidade carregador n° pontos
Capaciteit magazijn in aantal spijkers
Dergi kapasitesi
Kapacita zásobníka p. spôn

210

Pressione d'esercizio

Operating pressure
Betriebsdruck
Drifttryck

Pression d'exercice
Presión de servicio
Πίεση λειτουργίας
Pracovní tlak

Pressão de serviço
Werkdruk
Çalışma basıncı
Prevádzkový tlak

bar
psi

5 ÷ 7,5
70 ÷ 105

Consumo aria

Air consumption
Luftverbrauch
Luftförbrukning

Consommation d'air
Consumo aire
Κατανάλωση αέρα
Spotreba vzduchu

Consumo ar
Luchtverbruik
Hava tüketimi
Spotreba vzduchu

lt/colpo
ft³/cycle

0,34
0,012

Peso

Weight
Gewicht
Vikt

Poids
Peso
Βάρος
Hmotnost

Peso
Gewicht
Ağırlık
Hmotnost

kg
lbs

1,66
3,66

Dimensioni

Dimensions
Abmessungen
Dimensioner (AxBxH)

Dimensions
Dimensiones
Διαστάσεις
Rozměry

Dimensões
Afmetingen
Boyutlar
Rozmery

mm
inch

365x50x214
14-3/8"x2"x8-7/16"

(LxWxH)

EN 12549 :2009 EN ISO 3746 :2011 EN ISO 4871 :2009

Potenza sonora emessa

Sound power emitted
Emitierte Schalleistung
Avgiven ljudeffekt

Puissance sonore émise
Potencia sonora emitida
Εκτεμπόμενη ηχητική ισχύς
Emitovaný akustický tlak

Potência sonora emitida
Geëmitteerd geluidsvermogen
Çıkan ses gücü (ses desibel)
Výstupný akustický výkon

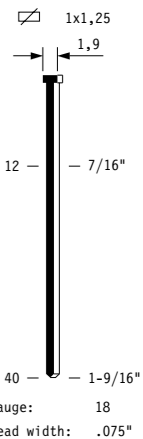
dB(A)

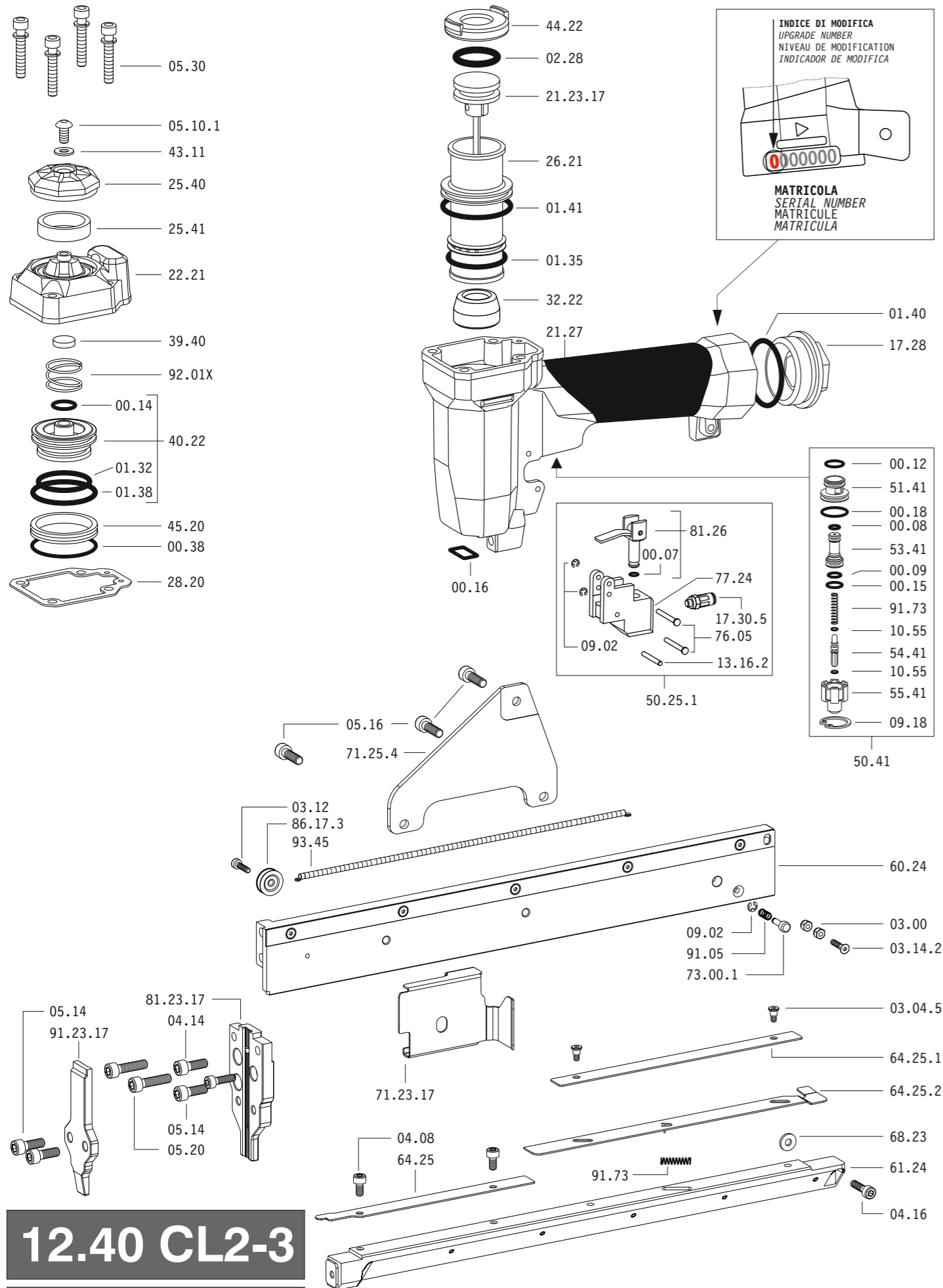
89

(K= 4 dB)

12212540-3_1240CL2-3_2_rev22_06/11/2024 MG

DO NOT
HANDHELD
THIS TOOL



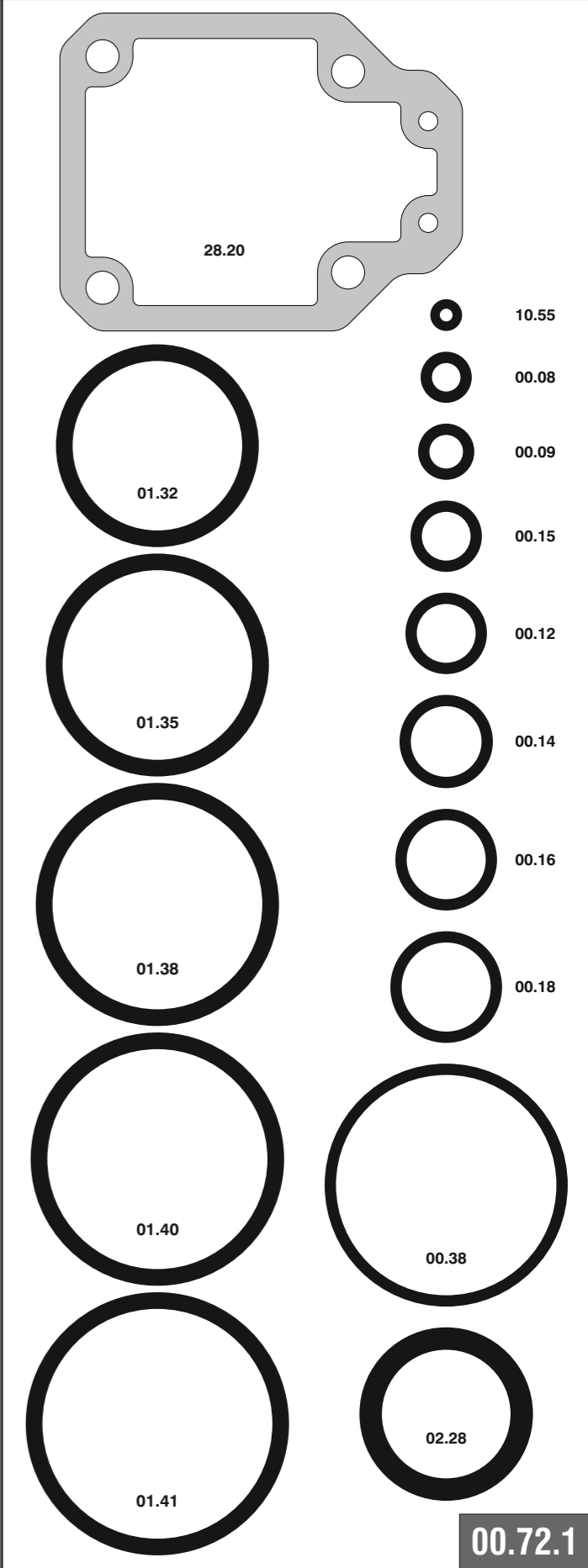


12.40 CL2-3

cod. 12212540-3

Cod.	Descrizione	Description
00.07	O-Ring	O-Ring
00.08	O-Ring	O-Ring
00.09	O-Ring	O-Ring
00.12	O-Ring	O-Ring
00.14	O-Ring	O-Ring
00.15	O-Ring	O-Ring
00.16	O-Ring	O-Ring
00.18	O-Ring	O-Ring
00.38	O-Ring	O-Ring
01.32	O-Ring	O-Ring
01.35	O-Ring	O-Ring
01.38	O-Ring	O-Ring
01.40	O-Ring	O-Ring
01.41	O-Ring	O-Ring
02.28	O-Ring	O-Ring
03.00	Dado	Nut
03.04.5	Vite	Screw
03.12	Vite	Screw
03.14.2	Vite	Screw
04.08	Vite	Screw
04.14	Vite	Screw
04.16	Vite	Screw
05.10.1	Vite	Screw
05.14	Vite	Screw
05.16	Vite	Screw
05.20	Vite	Screw
05.30	Vite	Screw
07.25	Chiave esagonale	Hex. bar wrench
07.30	Chiave esagonale	Hex. bar wrench
07.40	Chiave esagonale	Hex. bar wrench
09.02	Anello elastico	Elastic ring
09.18	Anello elastico	Elastic ring
10.55	O-Ring	O-Ring
13.16.2	Spina	Pin
17.28	Tappo	Inlet cap
17.30.5	Attacco	Connection
21.27	Corpo	Body
22.21	Testa	Head
25.40	Deflettore	Exhaust deflector
25.41	Silenziatore	Silencer
26.21	Cilindro	Cylinder
28.20	Guarnizione testa	Head gasket
32.22	Ammortizzatore	Bumper
39.40	Guarnizione scarico	Exhaust seal
40.22	Valvola completa	Valve ass'y
43.11	Rondella	Washer
44.22	Guarnizione	Gasket
45.20	Anello valvola	Ring
50.25.1	Comando a distanza	Remote control
50.41	Pulsante completo	Trigger valve ass'y
51.41	Boccola pulsante	Trigger valve housing
53.41	Pistone servovalvola	Valve piston
54.41	Pulsante	Trigger valve
55.41	Raccordo pulsante	Bush
60.24	Guida sx	Left guide
61.24	Guida dx	Right guide
64.25	Carter	Hold down
64.25.1	Carter posteriore	Rear hold down
64.25.2	Copertura	Cover
68.23	Rondella	Washer
71.25.4	Reggicaricatore	Support
73.00.1	Perno	Pin
76.05	Perno	Pin
77.24	Guida	Guide
81.26	Pistoncino	Piston
86.17.3	Carrucola	Pulley
91.05	Molla	Spring
91.73	Molla	Spring
92.01X	Molla	Spring
93.45	Molla	Spring
21.23.17	Battente	Driver
71.23.17	Spingipunto	Pusher
81.23.17	Controtestina	Nose
91.23.17	Testina	Nose plate
D01	Bocchetta olio	Oiler

Guarnizioni - O-Rings - Dichtungen - Joints - Juntas - Ακτύλιος στεγανοποίησης - Vedantes - O-ringen - Contalar - O-ringar - Těsnění - Tesnenia



12.40 CL2-3

cod. 12212540-3

Indice di modifica Upgrade number **2**

