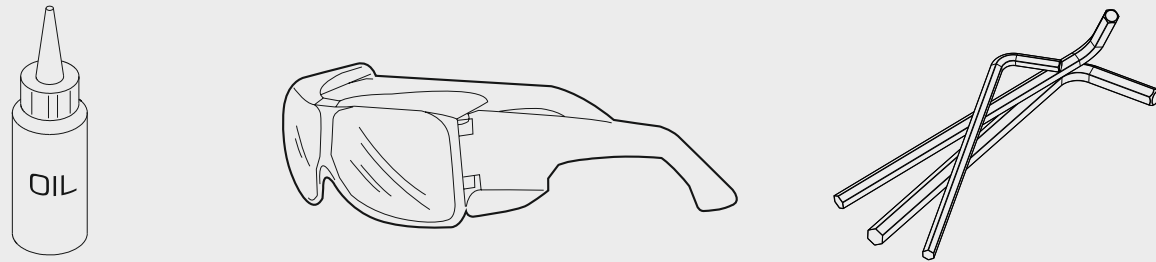
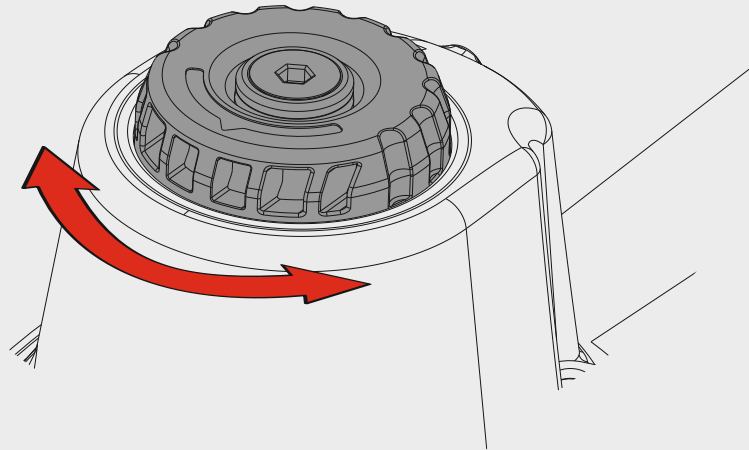


Dotazioni - Equipment - Ausstattung - Outillage - Dotaciones - Εξοπλισμός
 Dotações - Utrustning - Donanımlar - Utrustning



Caratteristiche - Features - Merkmale - Caractéristiques - Características - Χαρακτηριστικά
 Características - Kenmerken - Özellikler - Funktioner

Scarico orientabile a 360°
 360° adjustable exhaust



Note



Manuale d'uso, manutenzione e parti di ricambio	Parte 2
Manual for use, maintenance and spare parts	Part 2
Bedienungs- und Wartungshandbuch sowie Ersatzteilliste	Teil 2
Mode d'emploi, de maintenance et pièces de rechange	Partie 2
Manual de uso, mantenimiento y recambios	Part 2
Εγχειρίδιο χρήσης, συντήρησης και ανταλλακτικών	Μέρος 2
Manual de uso, manutenção e peças sobresselentes	Parte 2
Handleiding voor gebruik, onderhoud en wisselstukken	Deel 2
Kullanım, bakım ve yedek parça kılavuzu	Kısım 2
Användar-, underhålls- och reservdelshandbok	Del 2



CN23.57

cod. 195MCN2357



Warning: Please read the instructions and warnings for this tool carefully before use. Failure to do so could lead to serious injury.

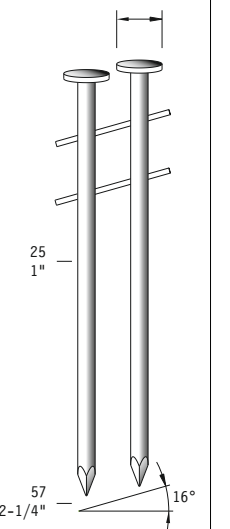
Dati tecnici Technical data Technische Daten Tekniska data	Caractéristiques techniques Datos técnicos Τεχνικά χαρακτηριστικά	Dados técnicos Technische gegevens Teknik veriler		
Misure impiegabili Lengths Verwendbare Nagellänge Dimensioner som kan användas	Dimensions utiles Medidas de longitud Μήκος Αναλωσίμου	Medidas utilizáveis Toepasbare afmetingen Boy	mm inch	25÷57 1"÷2-1/4"
Capacità caricatore n° punti Magazine capacity Magazinkapazität: Nägel Magasinkapacitet: Antal punkter	Capacité chargeur n° de points Capacidad cargador n° puntos Δυνατότητα γεμιστέρα	Capacidade carregador n° pontos Capaciteit magazijn in aantal spijkers Dergi kapasitesi		300÷350
Pressione d'esercizio Operating pressure Betriebsdruck Drifttryck	Pression d'exercice Presión de servicio Πίεση λειτουργίας	Pressão de serviço Werkdruk Çalışma basıncı	bar psi	5÷8 70÷115
Consumo aria Air consumption Luftverbrauch Luftförbrukning	Consommation d'air Consumo aire Κατανάλωση αέρα	Consumo ar Luchtverbruik Hava tüketimi	lt/colpo ft³/cycle	1,70 0,06003
Peso Weight Gewicht Vikt	Poids Peso Βάρος	Peso Gewicht Ağırlık	kg lbs	2,67 5,88
Dimensioni Dimensions Abmessungen Dimensioner (AxBxH)	Dimensions Dimensiones Διαστάσεις	Dimensões Afmetingen Boyutlar	mm inch	310x132x285 12-3/16"x5-1/4"x11-1/4" (LxWxH)
EN 12549 :2009 EN ISO 4871 :2009 Pressione sonora in pos. operatore Sound pressure in operator's position Schalldruck am Arbeitsplatz Ljudtryck på operatörsplatsen	Pression sonore poste Opérateur Presión sonora en la pos. del operador Ηχητική πίεση στη θέση του χειριστή	Pressão sonora na posição Operador Geluidsdruk op de werkplaats Operatör pozisyonunda ses basıncı	dB(A)	93,3 (K= 4 dB)
EN 12549 :2009 EN ISO 3746 :2011 EN ISO 4871 :2009 Potenza sonora emessa Sound power emitted Emitierte Schalleistung Avgiven ljudeffekt	Puissance sonore émise Potencia sonora emitida Εκπεμπόμενη ηχητική ισχύς	Potência sonora emitida Geëmitteerd geluidsvermogen Çıkan ses gücü (ses desibeli)	dB(A)	99,0 (K= 4 dB)
CEN ISO/TS 8662-11 :2006 EN ISO 5349-2 :2004 EN 12096 :1999 Emissione vibratoria sull'impugnatura Vibratory emissions on handle Vibrationsemission am Griff Vibrationsemission på handtaget	Émission vibratoire sur la prise en main Emisión de vibraciones en la empuñadura Εκπεμπόμενες δονήσεις στη λαβή	Emissão vibratória na empunhadura Trillingsemissie op de handgreep Tutamak üzerinde vibrasyon emisyonları	m/s²	3,73 (K= 2 m/s²)

Tipo di punto
Type of fastener
Befestigungsmittel
Type de rivet
Tipo de punto
Τύπος αναλωσίμου
Tipo de agrafó
Type nietjes
Zimba ve çivi tipleri
Typ av stygn

CNW203

CNW23

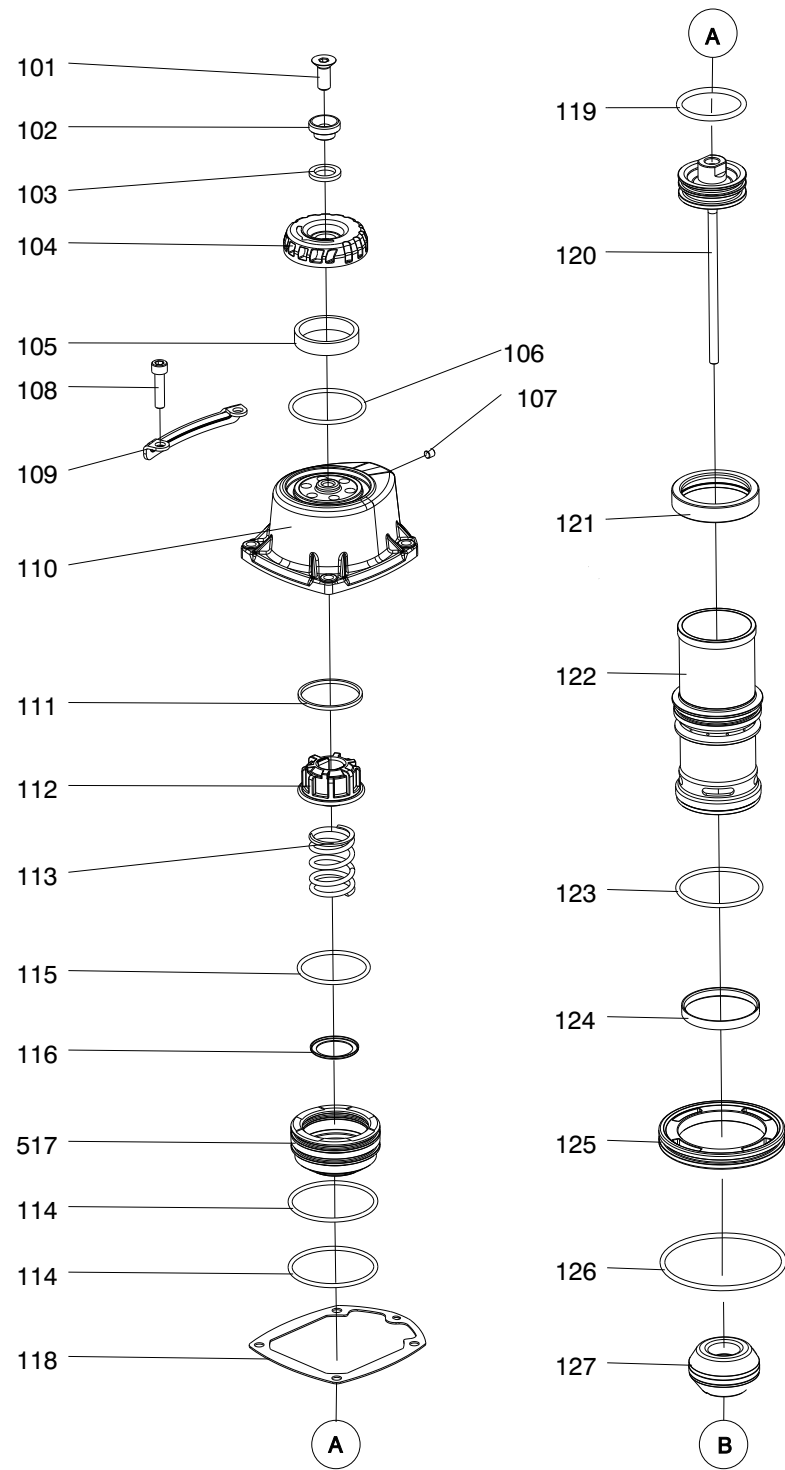
Ø 5,2 ÷ Ø 5,9
Head dia: .205" ÷ .232"



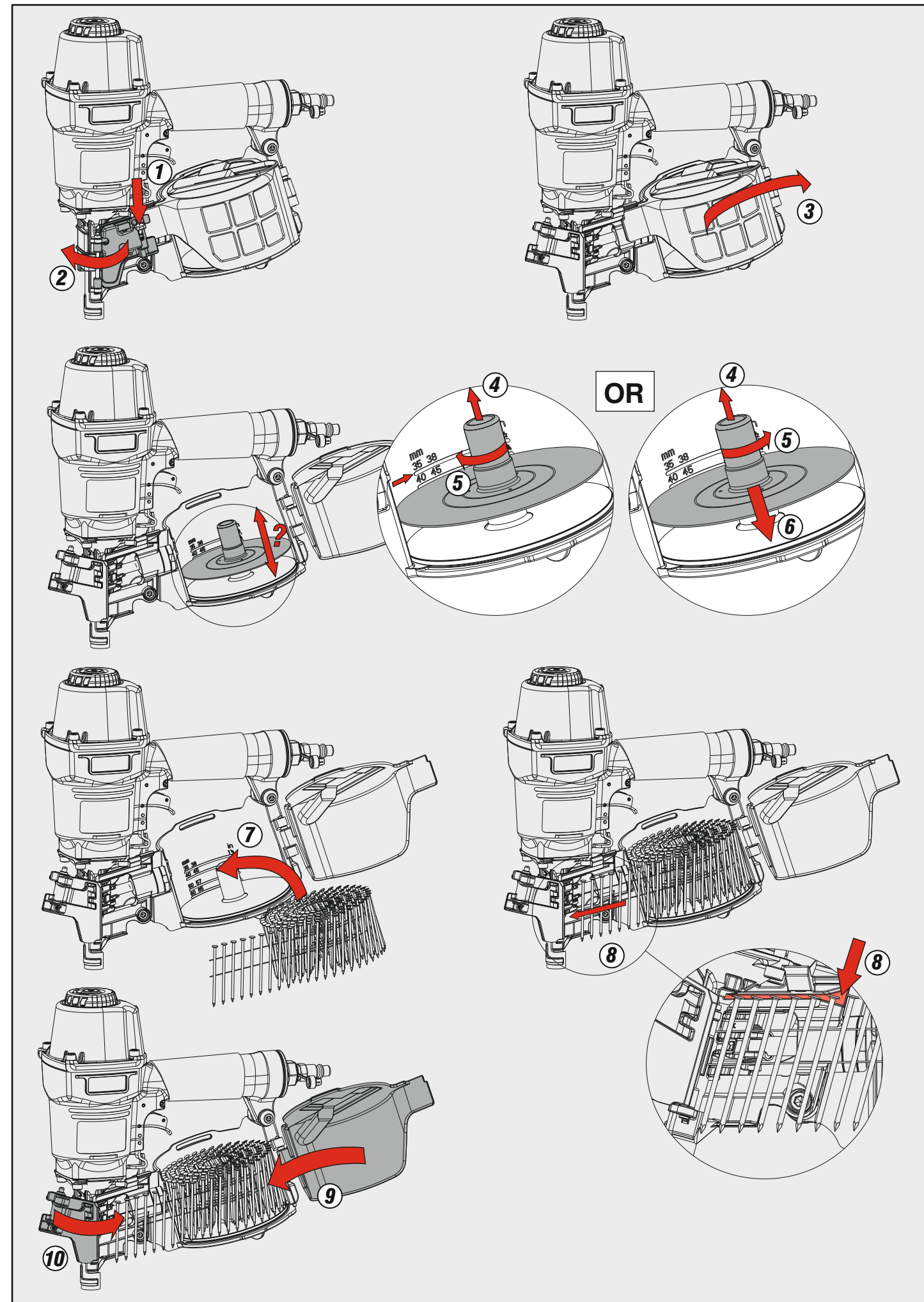
Ø 2,1 ÷ Ø 2,3
Shank dia: .082" ÷ .092"
Gauge: 13 3/4 ÷ 13

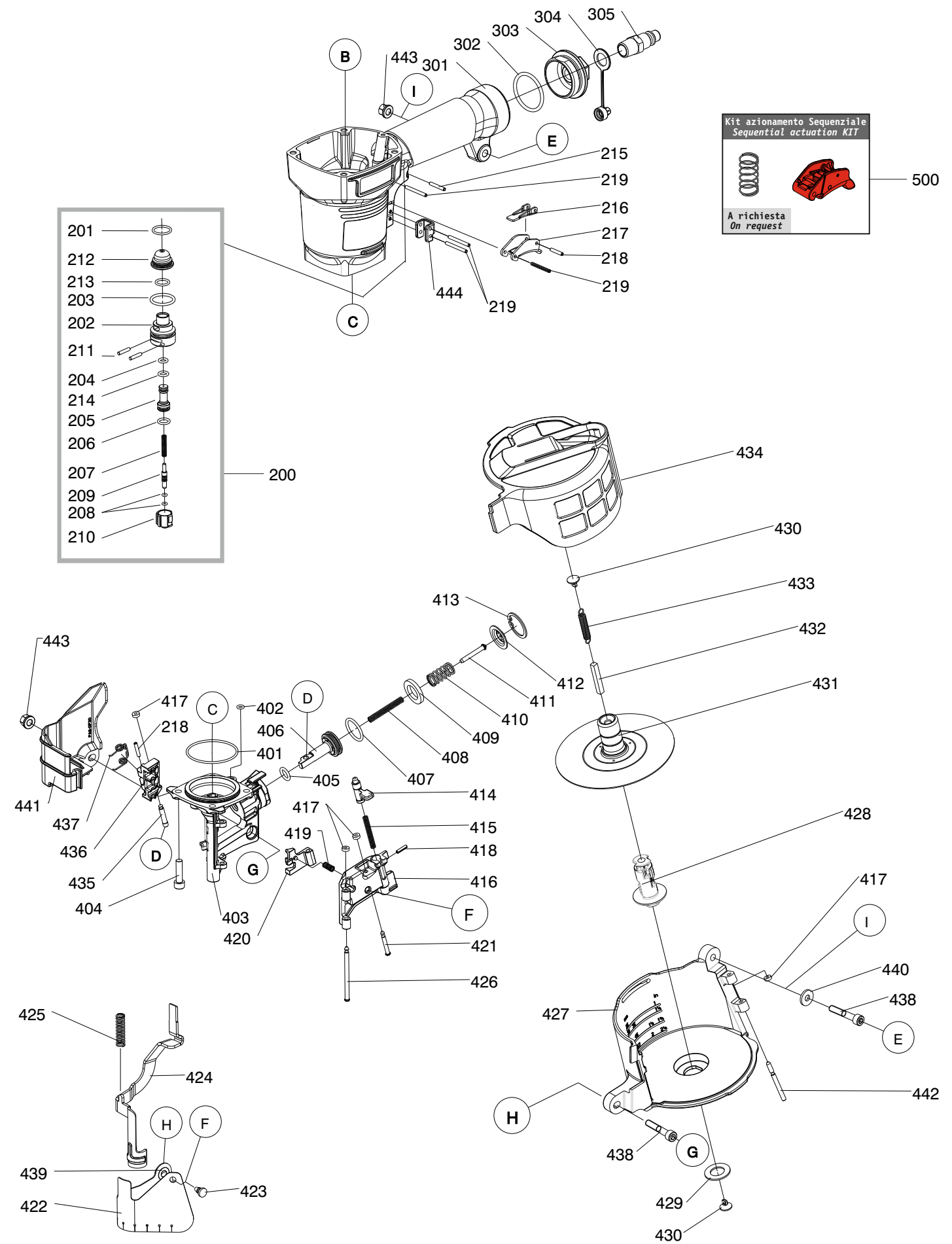
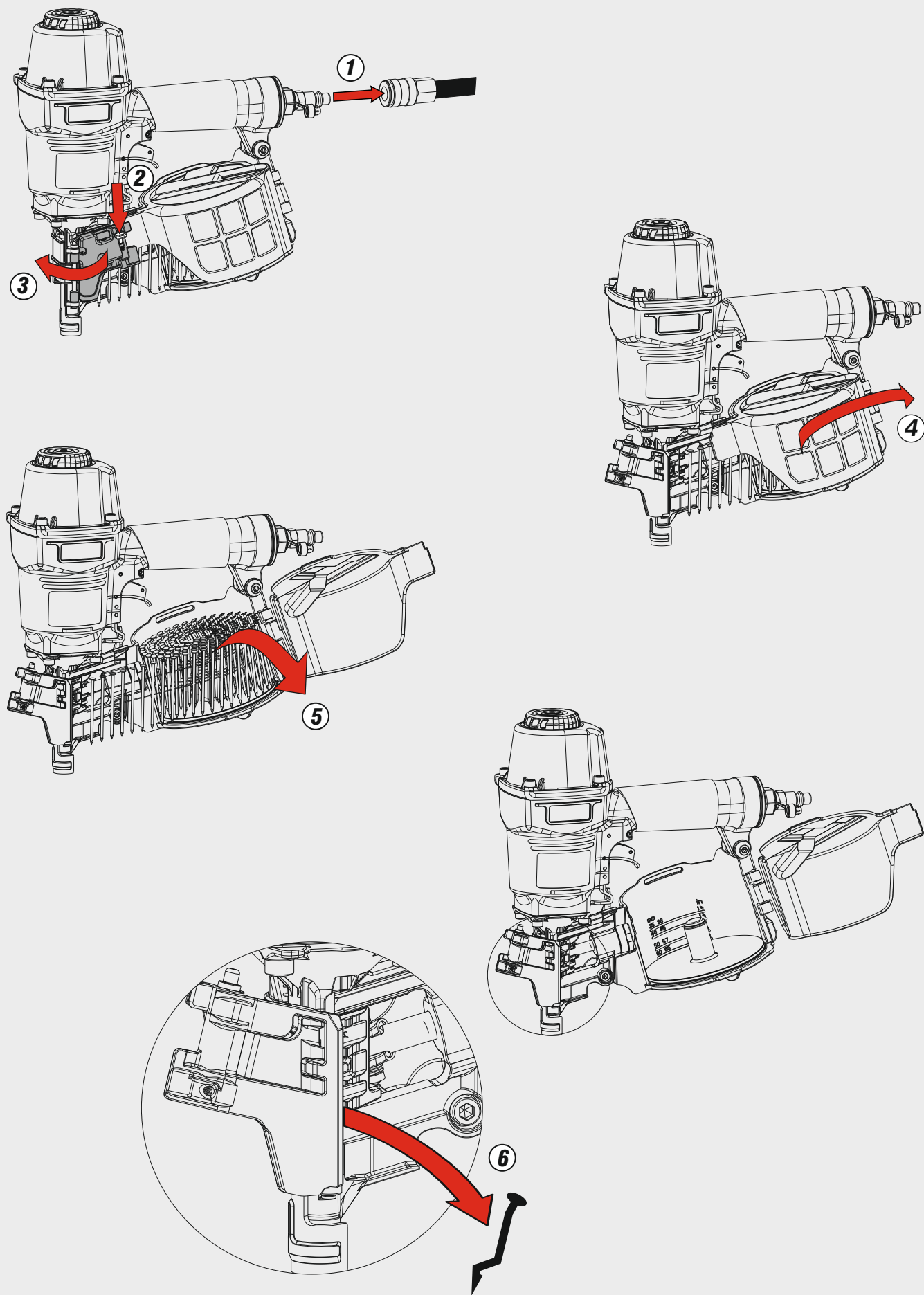
195MCN2357_CN2357_A1_rev21_06/12/2023_DV

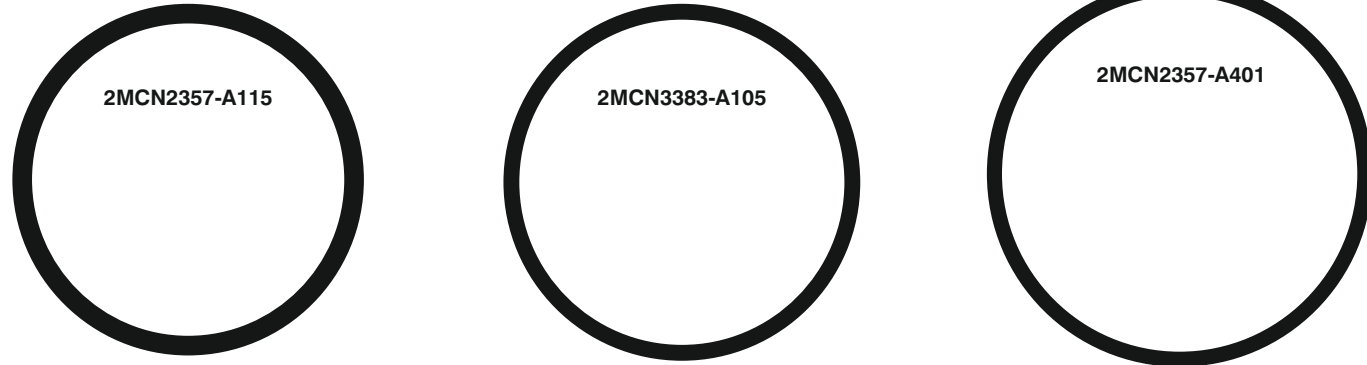
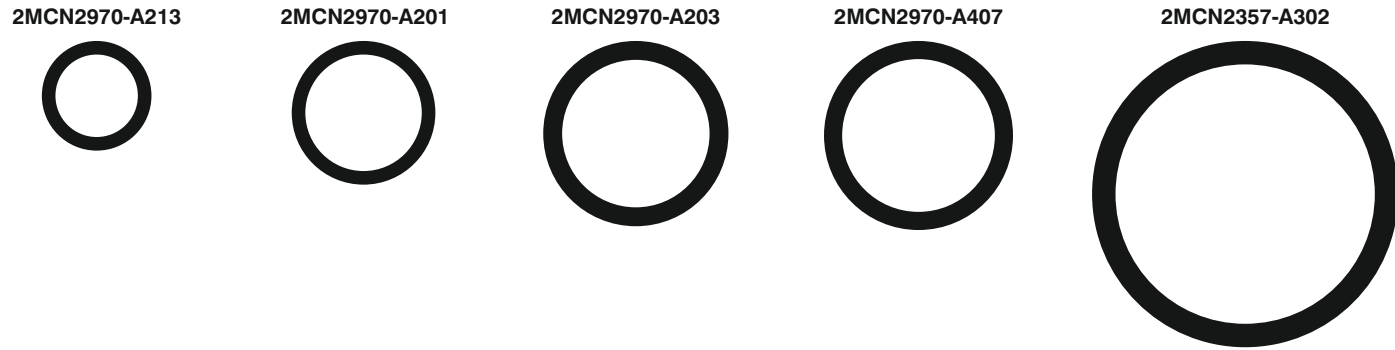
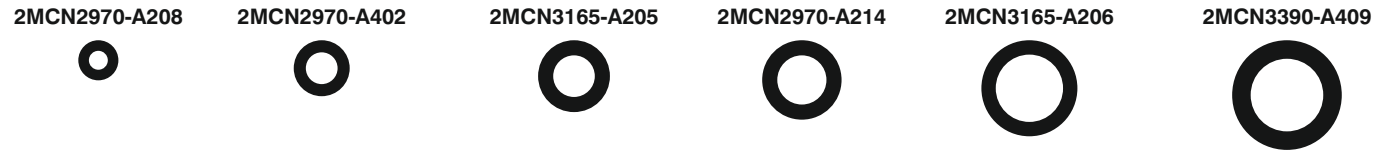
101	2MCN3390-A101	Counter Sunk Screw
102	2MCN3383-A102	Washer
103	2MCN3165-A105	Rubber Pad
104	2MCN3383-A104	Deflector
105	2MCN3165-A104	Muffler
106	2MCN3383-A105	O-Ring
107	2MCN2970-A104	Hex. Soc. Hd. Screw
108	2MCN2357-A108	Hex. Soc. Hd. Bolt
109	2MCN2357-A109	Guide Cover
110	2MCN2357-A110	Cap
111	2MCN2357-A111	Washer Seal
112	2MCN2357-A112	Seal
113	2MCN2357-A113	Compression Spring
114	2MCN2357-A114	O-Ring
115	2MCN2357-A115	O-Ring
116	2MCN2357-A116	Washer
118	2MCN2357-A118	Cylinder Cap Seal
119	2MCN2357-A119	O-Ring
120	2MCN2357-A120	Driver Unit
121	2MCN2357-A121	Collar
122	2MCN2357-A122	Cylinder
123	2MCN2357-A123	O-Ring
124	2MCN2357-A124	Cylinder Ring
125	2MCN2357-A125	Cylinder Spacer
126	2MCN2357-A126	O-Ring
127	2MCN2357-A127	Bumper
200	2MCN2970-A200	Trigger Valve Unit
201	2MCN2970-A201	O-Ring
202	2MCN2970-A202	Plunger Cap
203	2MCN2970-A203	O-Ring
204	2MCN3165-A205	O-Ring
205	2MCN2970-A205	Valve Plunger
206	2MCN3165-A206	O-Ring
207	2MCN2970-A207	Spring
208	2MCN2970-A208	O-Ring
209	2MCN2357-A209	Plunger
210	2MCN2970-A210	Trigger Valve Head
211	2MCN2970-A211	Pin
212	2MCN2970-A212	Cover-Plunger
213	2MCN2970-A213	O-Ring
214	2MCN2970-A214	O-Ring
215	2MCN2970-A215	Spiral Pins
216	2MCN2970-A216	Secondary Trigger
217	2MCN2357-A217	Trigger
218	2MCN3165-A216	Spring Pin
219	2MCN2357-A219	Spiral Pins
301	2MCN2357-A301	Gun Body Unit
302	2MCN2357-A302	O-Ring
303	2MCN2357-A303	End Cap
304	2MCN3165-A304	Dusty Cover
305	2MCN3165-A305	Air Plug
401	2MCN2357-A401	O-Ring
402	2MCN2970-A402	O-Ring
403	2MCN2357-A403	Nose Piece
404	2MCN3165-A429	Hex. Soc. Hd. Bolt
405	2MCN3390-A409	O-Ring
406	2MCN2357-A406	Feed Piston
407	2MCN2970-A407	O-Ring
408	2MCN2357-A408	Pusher Spring B
409	2MCN2357-A409	Feed Bumper
410	2MCN2357-A410	Pusher Spring
411	2MCN2357-A411	Rod
412	2MCN2357-A412	Feed Piston Cap
413	2MCN2970-A411	C-Ring
414	2MCN2970-A413	Door Latch
415	2MCN2970-A414	Latch Spring
416	2MCN2357-A416	Door
417	2MCN2970-A416	Pu Retainer
418	2MCN3165-A211	Spring Pin
419	2MCN2970-A418	Stopper Finger Sprin
420	2MCN2357-A420	Nail Stop
421	2MCN2357-A421	Pin-Nail Stop
422	2MCN2357-A422	Muzzle Protector
423	2MCN2970-A422	Dust Shield Plug
424	2MCN2357-A424	Safety
425	2MCN2357-A425	Safety Spring
426	2MCN2357-A426	Door Shaft Pin
427	2MCN2357-A427	Magazine Case
428	2MCN3383-A426	Magaeing Post
429	2MCN3383-A427	Rubber Ring
430	2MCN2970-A429	Spring Base
431	2MCN2357-A431	Spacer



432	2MCN2970-A432	Spacer
433	2MCN2970-A433	Pull Spring
434	2MCN2357-A434	Magazine Cover
435	2MCN2970-A435	Pin Feed Piston
436	2MCN2357-A436	Feed Finger 2.1 / 2.3 Flat
437	2MCN2970-A437	Feed Finger Spring
438	2MCN2357-A438	Hex. Soc. Hd. Bolt
439	2MCN2357-A439	Protector Washer
440	2MCN2970-A440	Flat Washer
441	2MCN2357-A441	Spring Cover
442	2MCN2357-A442	Magazine Shaft Pin
443	2MCN2970-A442	Bolt Cap
444	2MCN2565-A444	Safety Guide
500	2MSN2213-K216	Sequential actuation KIT
517	2MCN2357-A517	Hd.Valve Piston







2MCN2357-K100

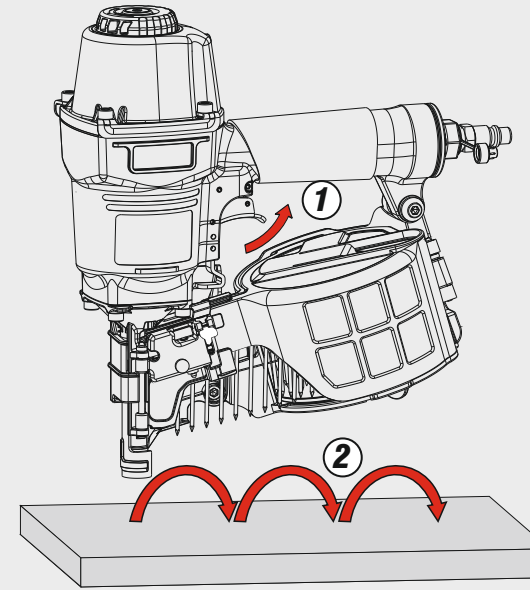


Di serie / Standard

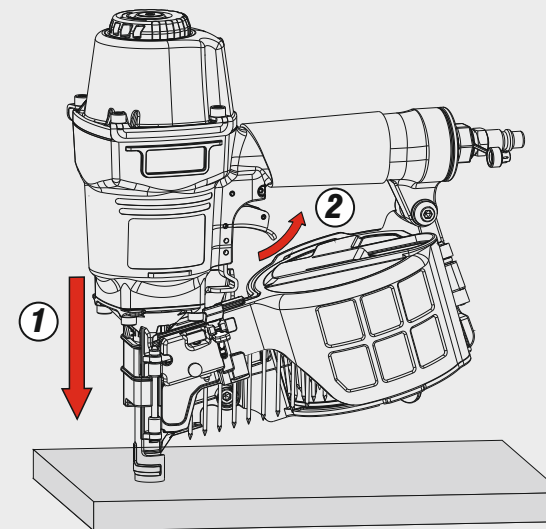


A richiesta / On request

Azionamento a contatto
 Contact actuation



Oppure - Or



Azionamento sequenziale singolo
 Single sequential actuation

