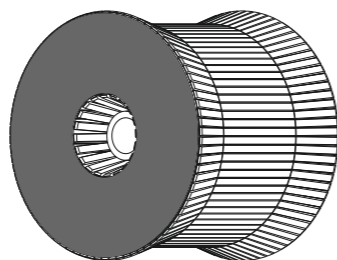
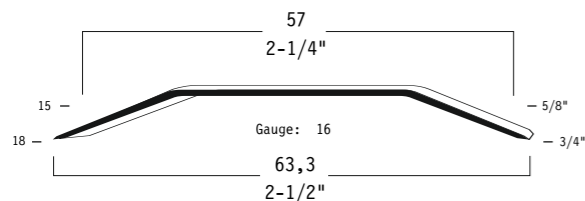
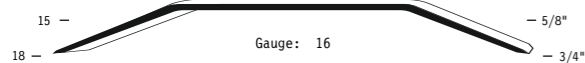


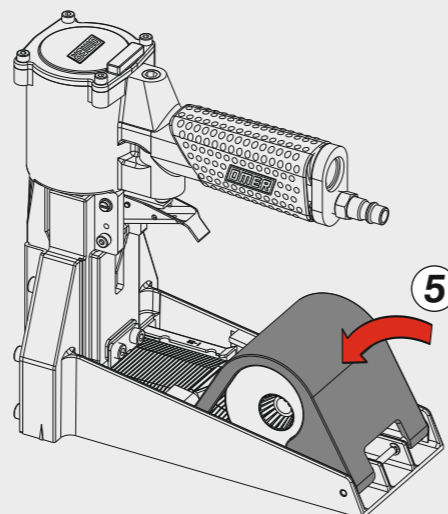
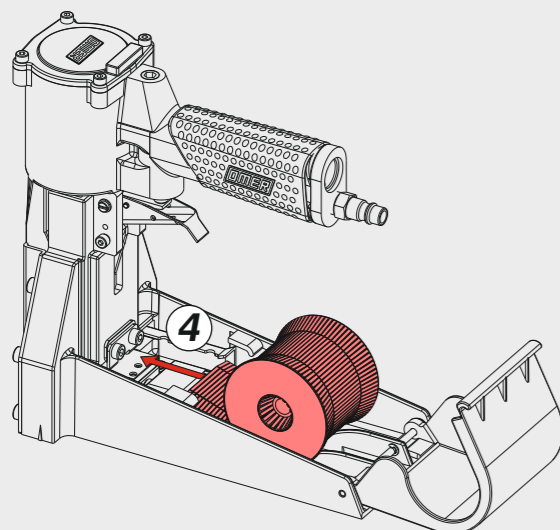
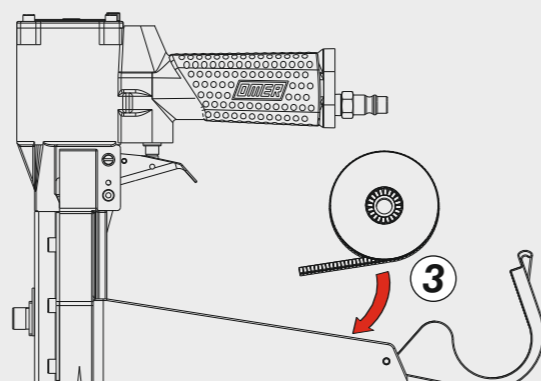
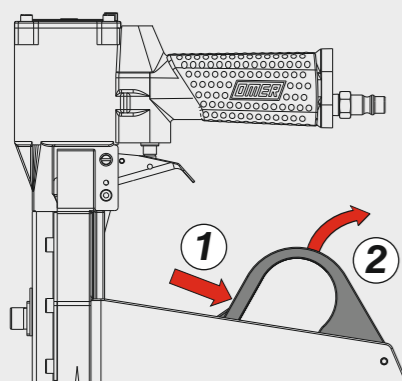
ROLL A

0,90x2,20



Caricamento - Loading

Caricamento da sopra Top load magazine



Manuale d'uso, manutenzione e parti di ricambio	Parte 2
Use, maintenance and spare parts manual	Part 2
Gebrauchsanweisung, Instandhaltungsrichtlinien und Ersatzteile	Teil 2
Manuel d'utilisation, entretien et pièces de rechange	Partie 2
Manual de uso, mantenimiento y repuestos	Part 2
Εγχειρίδιο χρήσης, συντήρησης και ανταλλακτικών	2° Μέρος
Manual de utilização, manutenção e partes sobresselentes	Parte 2
Handleiding voor gebruik, onderhoud en wisselstukken	Deel 2
Brugsanvisning, vedligeholdelse og reservedelsliste	Del 2



A.18-1 Roll

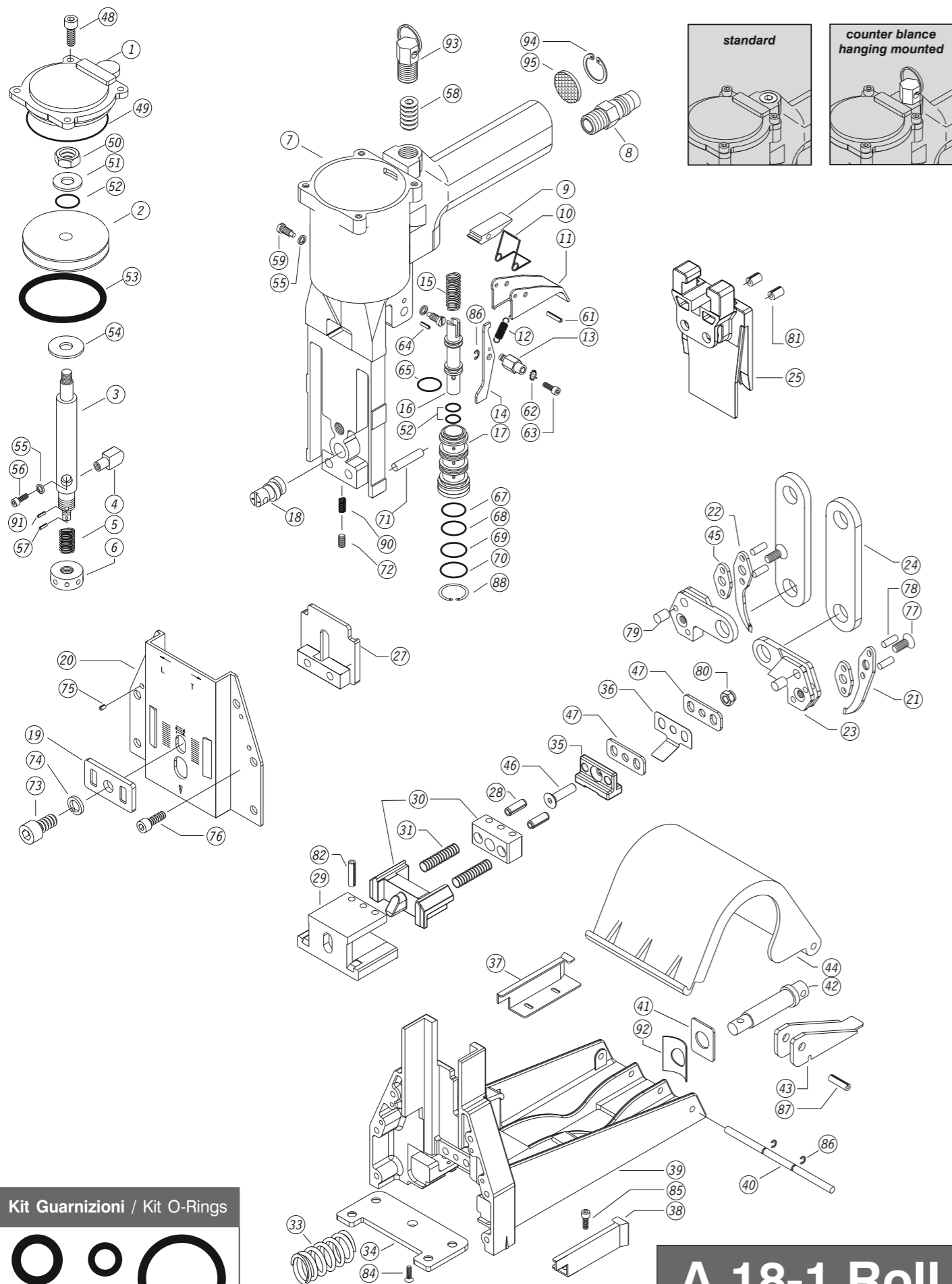
cod. 198181RT4

198181RT4_A18-1ROLL_4 030320 IV



Dati tecnici Technical data Technische daten	Données techniques Datos técnicos Τεχνικά χαρακτηριστικά	Dados técnicos Technischegegevens Teknische data	
Misure impiegabili mm Usable lengths mm Gebrauchliche Längen mm	Mesures utilisables mm Medidas que se pueden emplear mm Διαστάσεις σε μμ	Medidas que se podem utilizar mm Te gebruiken lengtes in mm Brugbare lengder i mm	15 ÷ 18
Capacità caricatore n° punti Magazine capacity No. of fasteners Magazinkapazität Nägel	Capacité chargeur n° de points Capacidad cargador n° puntos Δυνατότητα γεμιστέρα, σπινδύτερος	Capacidade carregador n° pontos Capaciteit magazijn in aantal spijkers Kapacitet af magasin antal klemme	1000
Pressione d'esercizio Working pressure Betriebsdruck	Pression de fonctionnement Presión de trabajo Πίεση λειτουργίας ατμ.	Pressao de trabalho Werkdruk Arbejds tryk bar	5 ÷ 7 bar 70 ÷ 100 psi
Consumo aria litri/colpo Air consumption litres/shot Luftverbrauch Liter/Schlag	Consommation air litre/coup Consumo aire-litros/golpe Κατανοση αερα λ/ξτπημα	Consumo ar litro/golpe Luchtverbruik liter/schot Luftforbrug liter/skud	1,32
Peso kg Weight kg Gewicht kg	Poids kg Peso kg Βαρος κγ	Peso kg Gewicht in kg Vægt kg	2,40
Dimensioni (AxBxH) mm Dimensions mm Größe mm	Dimension mm Dimensiones mm Δυνατότητα γεμιστέρα, σπινδύτερος	Dimencoes mm Afmetingen in mm Dimensioner mm	237x115x222
EN 12549 :1999 ISO 11201 :1995			
Pressione sonora in pos. operatore Sound pressure at the workstation Lärmintensität am Arbeitsplatz	Pression acoustique près de l'opérateur Presión sonora en posición encargado Ακουστική πίεση στη θέση χειριστού	Intensidade sonora perto do operador Geluidssterkte op de werkplek Lydstyrke på operatorposten	89 dB(A)
EN 12549 :1999 ISO 3744 :1994			
Potenza sonora emessa Emitted sound power Ausgestrahlte Lärmintensität	Puissance acoustique émise Potencia sonora emitida Ακουστική ισχυ	Potência sonora emitida Uitgestraalde geluidssterkte Udsendt lydstryrke	93 dB(A)
EN 28662 :1992 ISO 5349 :1986 ISO 8662 -11			
Valore medio ponderato di vibrazione sull'impugnatura Weighted mean value of vibration on the grip Mitteler Vibrationswert, am Griff gemessen	Valeur moyenne pondérée de vibration mesurée sur la poignée Valor medio ponderado de vibracion medida en la empunadura Μεσος ορος μετρησης κραδασιμον στη χειρολαβη	Valor medio ponderado de vibracao medida no punho Gewogen gemiddelde vibratiewaarde Middelvaerdi af vibrationer på handtaget	<2,5 m/s²

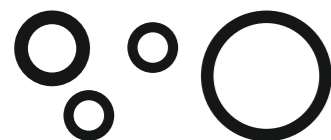
Parti di ricambio - Spare parts - Ersatzteile - Pièces de rechange - Piezas de repuesto
 Ανταλλακτικά - Partes sobresselentes - Wisselstukken - Reservedele



A.18-1 Roll

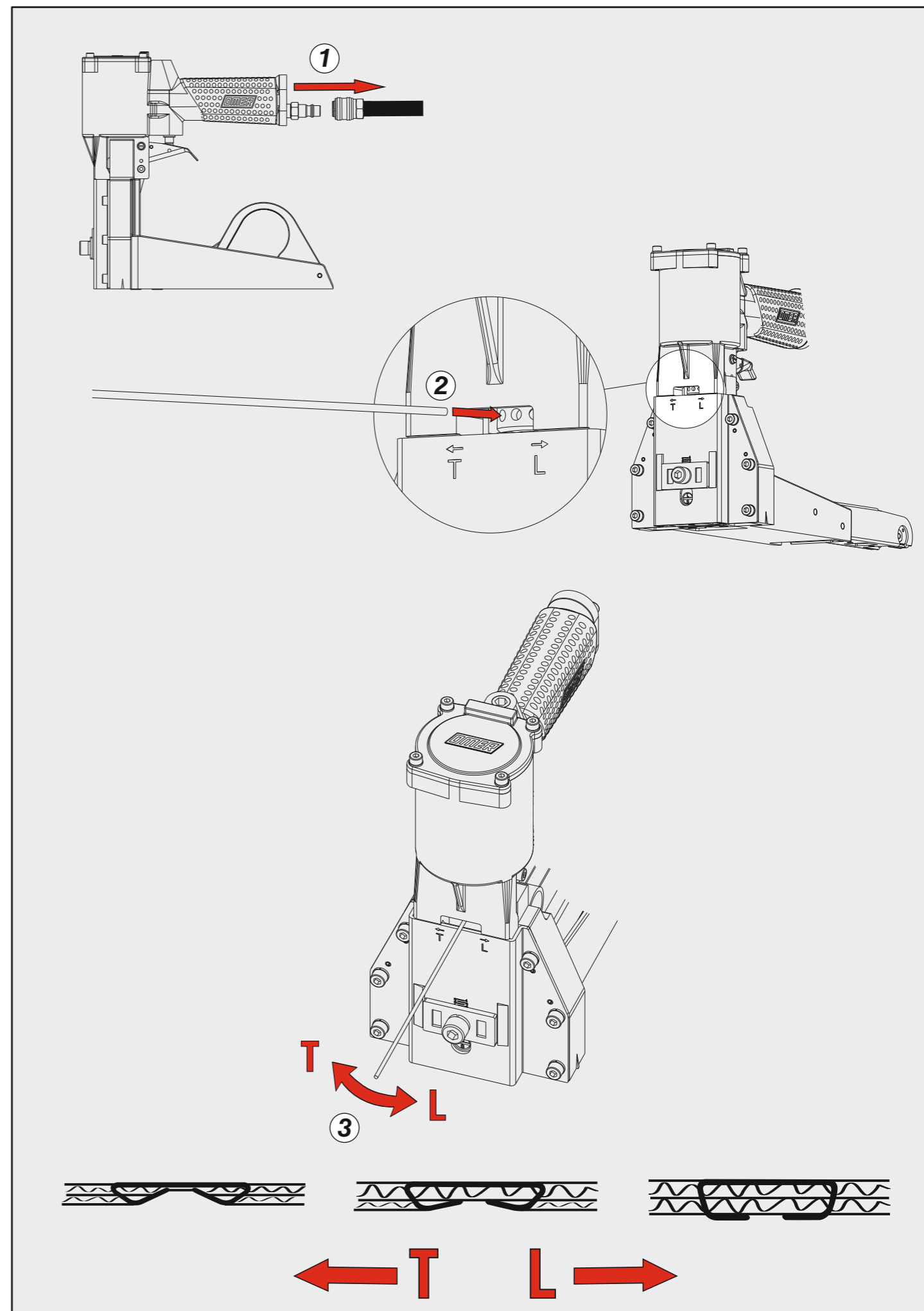
cod. 198181RT4

Kit Guarnizioni / Kit O-Rings

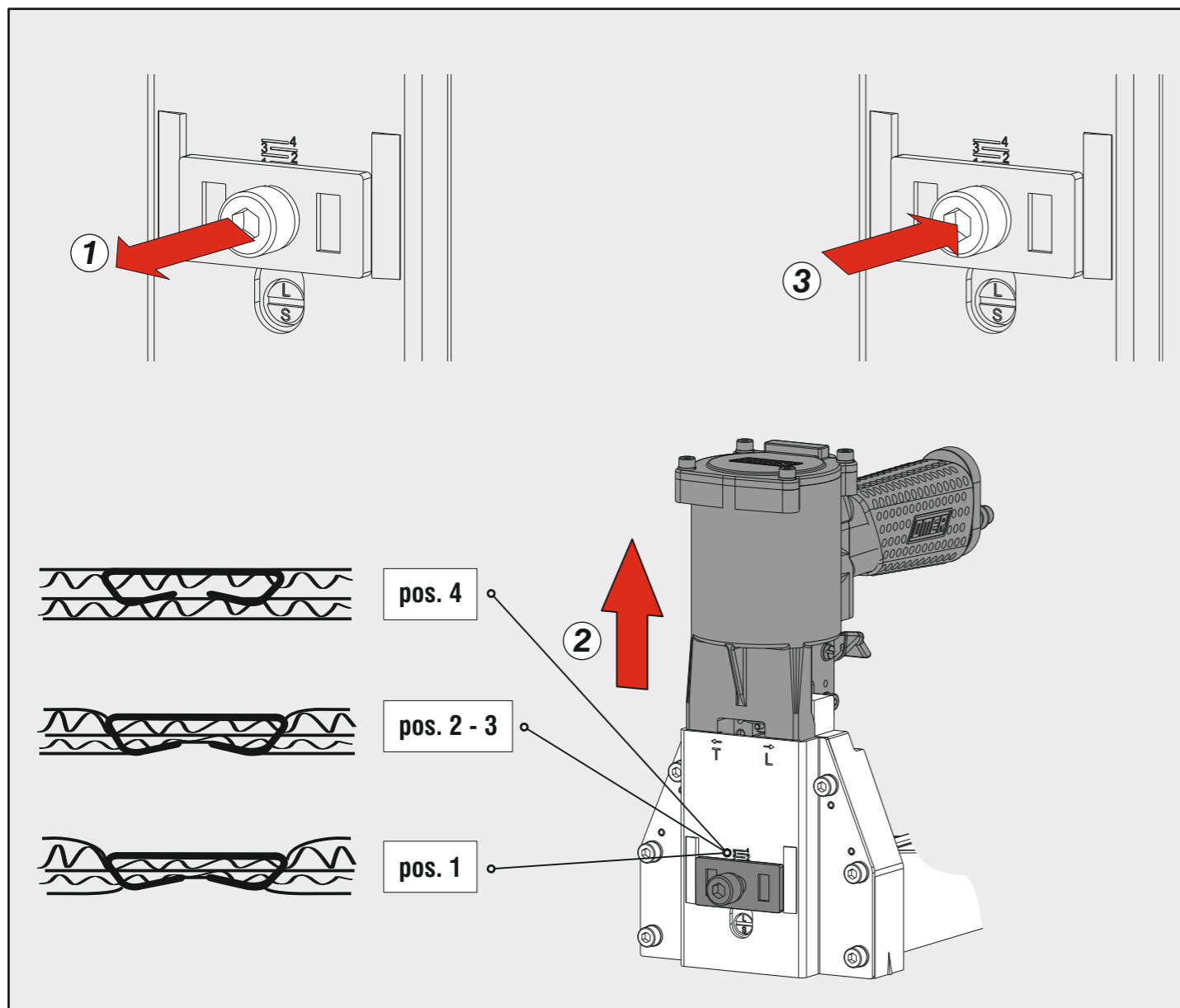


CRT0RK1

Regolazione della chiusura - Clinching adjustment



Regolazione di profondità - Depth adjustment



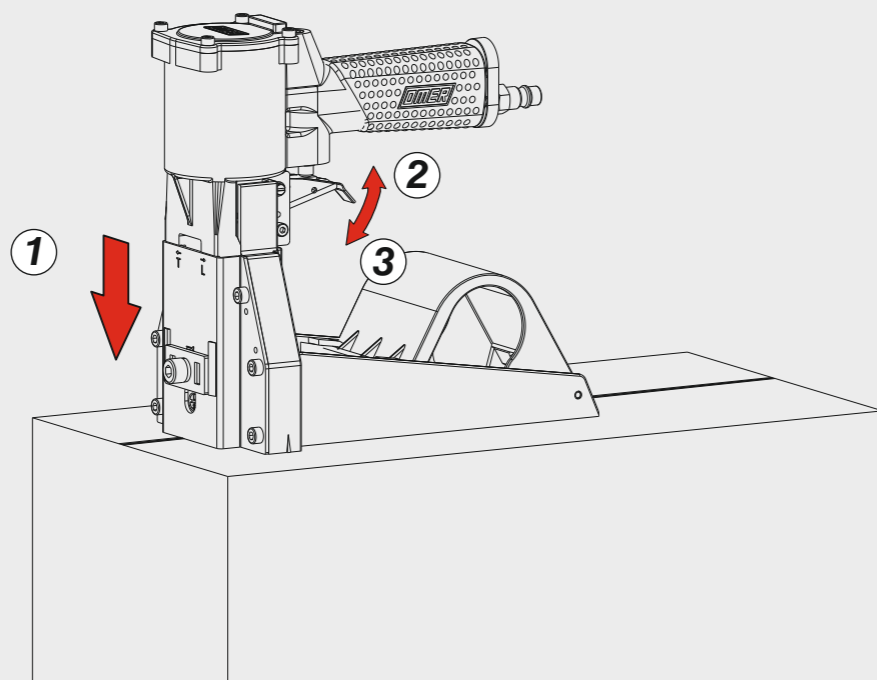
pos. 4

pos. 2 - 3

pos. 1

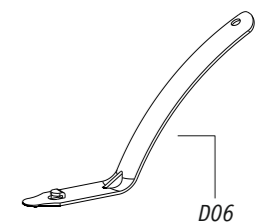
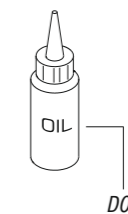
Azionamento - Actuation

Azionamento singolo Single actuation



Ref. No.	Part No.	Description	Ref. No.	Part No.	Description	Ref. No.	Part No.	Description
1	32P501	Cap	35	35R035	Top Guide	69	35P060	O-Ring
2	35P002N	Piston	36	35R036	Leaf Spring	70	35P061	O-Ring
3	35P003N	Piston Rod	37	19I037	Right Coil Guide	71	35P062	Rod
4	35P004	Block	38	19I038	Left Coil Guide	72	35P063	Screw
5	35P005	Spring	39	35R039	Magazine Seat	73	35P064	Screw
6	35P006	Collar	40	19R040	Shaft	74	35P065	Spring Washer
7	35P007N	Body	41	19R041	Washer	75	35P066	Spring Pin
8	35P008	Air Plug	42	19R042	Shaft	76	32P570	Screw
9	35P009	Block	43	19R043	Lever	77	35P069	Screw
10	35P010	Spring	44	19R044	Cover	78	35P070	Pin
11	35P011	Trigger	45	35P092	Plate	79	35P071	Pin
12	35P012	Spring	46	35R540	Screw	80	35R531	Nut
13	35P013	Rod	47	35R047	Washer	81	35P072	Spring Pin
14	35P014	Trigger's control	48	35P040N	Screw	82	19B081	Spring Pin
15	35P015	Spring	49	35P042N	O-Ring	84	35P082N	Screw
16	35P016	Valve	50	35P043	Nut	85	19B084	Screw
17	35P017N	Tube	51	35P044	Washer	86	35P081	E-Ring
18	35P018	Adjusting Rod	52	35P045	O-Ring	87	19B086	Spring Pin
19	35P019	Adjusting Plate	53	35P046N	O-Ring	88	35P080N	C-Ring
20	32P520	Front plate	54	35P047	Washer	90	35P084	Heli-Coil
21	35P021	Right jaw	55	35P041	Spring Washer	91	35P085	Plastic Pin
22	35P022	Left jaw	56	35P048	Screw	92	19B090	Wave Washer
23	35P023	Jaw seat	57	35P049	Spring Pin	93	19B091	Counter Balance Hanger
24	35P024	Plate	58	35P050	Screw	94	35P080N	C-Ring
25	35R025	Driver	59	35P051	Trigger Screw	95	32P541	Silencer
27	35R027	Driver guide unit	61	35P052	Spring Pin	07.25		Hex. Bar wrench
28	35R528	Spring pin	62	35P053	Teeth Washer	07.30		Hex. Bar wrench
29	19I029	Anvil	63	35P054	Screw	07.40		Hex. Bar wrench
30	19I030	Pusher	64	35P066	Spring Pin	D01		Oiler
31	19R031	Spring	65	35P056	O-Ring	D06		Staple remover
33	19R033	Spring	67	35P058	O-Ring			
34	19R034	Plate	68	35P059	O-Ring			

Dotazioni - Equipment - Ausrüstung - Équipements - Equipamiento - Παρεχόμενα Equipamento - Uitrusting - Udstyr



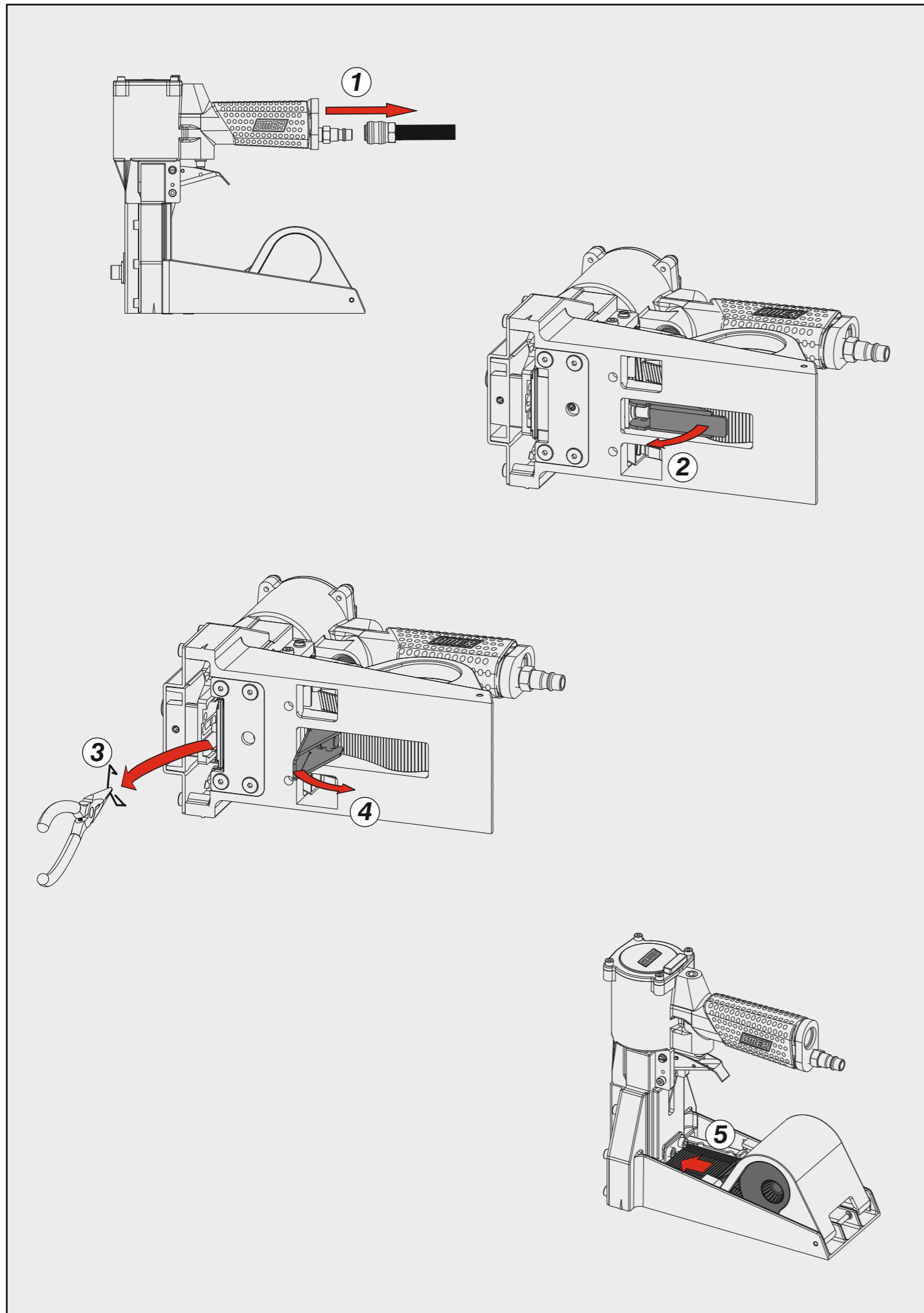
A.18-1 Roll

cod. 198181RT4

Indice di modifica
Upgrade number

4

Disinceppamento - Jam clearing



Regolazione lunghezza graffa - Staple length adjustment

