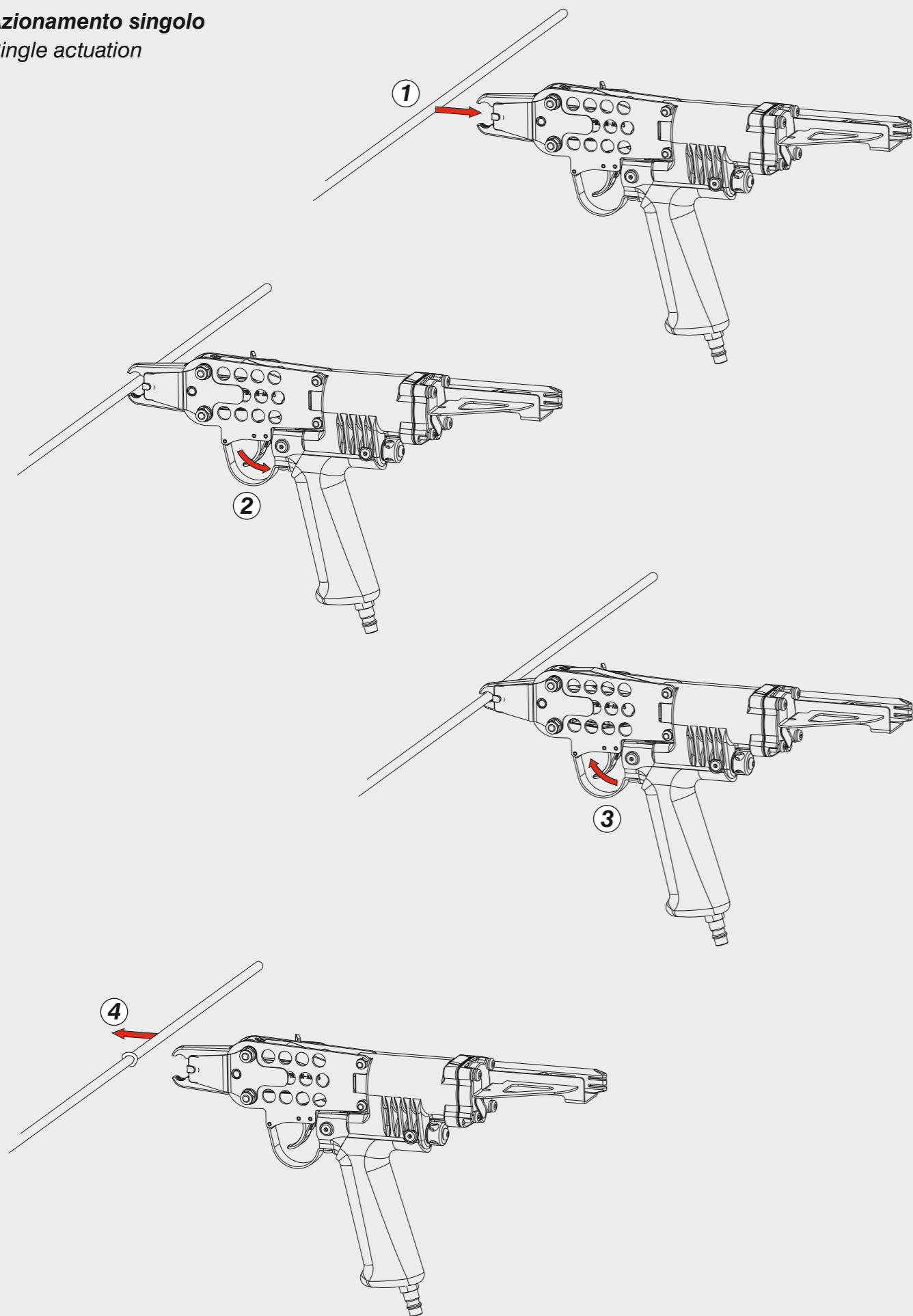


Azionamento singolo

Single actuation



OMER

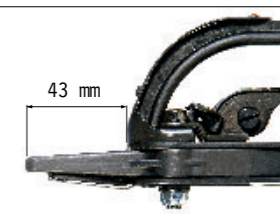
| | |
|--|-----------------|
| Manuale d'uso, manutenzione e parti di ricambio | Parte 2 |
| Manual for use, maintenance and spare parts | Part 2 |
| Bedienungs- und Wartungshandbuch sowie Ersatzteilleiste | Teil 2 |
| Mode d'emploi, de maintenance et pièces de rechange | Partie 2 |
| Manual de uso, mantenimiento y recambios | Part 2 |
| Εγχειρίδιο χρήσης, συντήρησης και ανταλλακτικών | Μέρος 2 |
| Manual de uso, manutenção e peças sobresselentes | Parte 2 |
| Handleiding voor gebruik, onderhoud en wisselstukken | Deel 2 |
| Kullanım, bakım ve yedek parça kılavuzu | Kısım 2 |



HR20 M5

cod. 192HR20M5A4

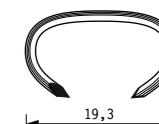
| Dati tecnici Technical data Technische Daten | Caractéristiques techniques Datos técnicos Τεχνικά χαρακτηριστικά | Dados técnicos Technische gegevens Teknik veriler |
|--|---|---|
| Misure impiegabili mm Lengths mm Verwendbare Nagellänge mm | Dimensions utiles mm Medidas de longitud mm Μήκος Αναλωσίμου - mm | Medidas utilizáveis mm Toepasbare afmetingen mm Boy mm |
| Capacità caricatore n° punti Magazine capacity Magazinkapazität Nägel | Capacité chargeur n° de points Capacidad cargador n° puntos Δωνατοτητα γεμιστερα | Capacidade carregador n° pontos Capaciteit magazijn in aantal spijkers Dergi kapasitesi |
| Pressione d'esercizio Operating pressure Betriebsdruck | Pression d'exercice Presión de servicio Πίεση λειτουργίας | Pressão de serviço Werkdruk Çalışma basıncı |
| Consumo aria litri/colpo Air consumption litres/stroke Luftverbrauch Liter/Schuss | Consumation d'air litres/coup Consumo aire litros/golpe Κατανάλωση αέρα - λίτρα/βολή | Consumo ar litros/disparo Luchtverbruik liter/slag Litre/vuruş hava tüketimi |
| Peso kg Weight kg Gewicht kg | Poids kg Peso kg Βάρος - kg | Peso kg Gewicht in kg Ağırlık kg |
| Dimensioni mm Dimensions mm Abmessungen mm | Dimensions mm Dimensiones mm Διαστάσεις mm | Dimensões mm Afmetingen mm Boyutlar mm |
| EN 12549 :1999 Pressione sonora in pos. operatore Sound pressure in operator's position Schalldruck am Arbeitsplatz | Pression sonore poste Opérateur Presión sonora en la pos. del operador Ηχητική πίεση στη θέση του Χειριστή | Pressão sonora na posição Operador Geluidsdruk op de werkplaats Operatör pozisyonunda ses basıncı |
| EN 12549 :1999 Potenza sonora emessa Sound power emitted Emitierte Schalleistung | Puissance sonore émise Potencia sonora emitida Εκπεμπόμενη ηχητική ισχύς | Potência sonora emitida Geëmitteerd geluidsvermogen Çıkan ses gücü (ses desibel) |
| ISO 8662-11 :1999 Emissione vibratoria sull'impugnatura Vibratory emissions on handle Vibrationsemission am Griff | Émission vibratoire sur la prise en main Emisión de vibraciones en la empuñadura Εκπεμπόμενες δονήσεις στη λαβή | Emissão vibratória na empunhadura Trillingsemissie op de handgreep Tutamak üzerinde vibrasyon emisyonları |



Tipo di punto
Type of fastener
Befestigungsmittel
Type de rivet
Tipo de punto
Τύπος αναλωσίμου
Tipo de agrafó
Type nietjes
Zimba ve çivi tipleri

HR20

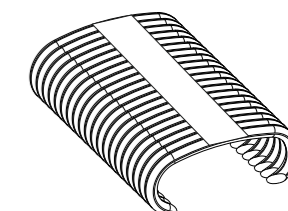
1,25x1,6



19,3

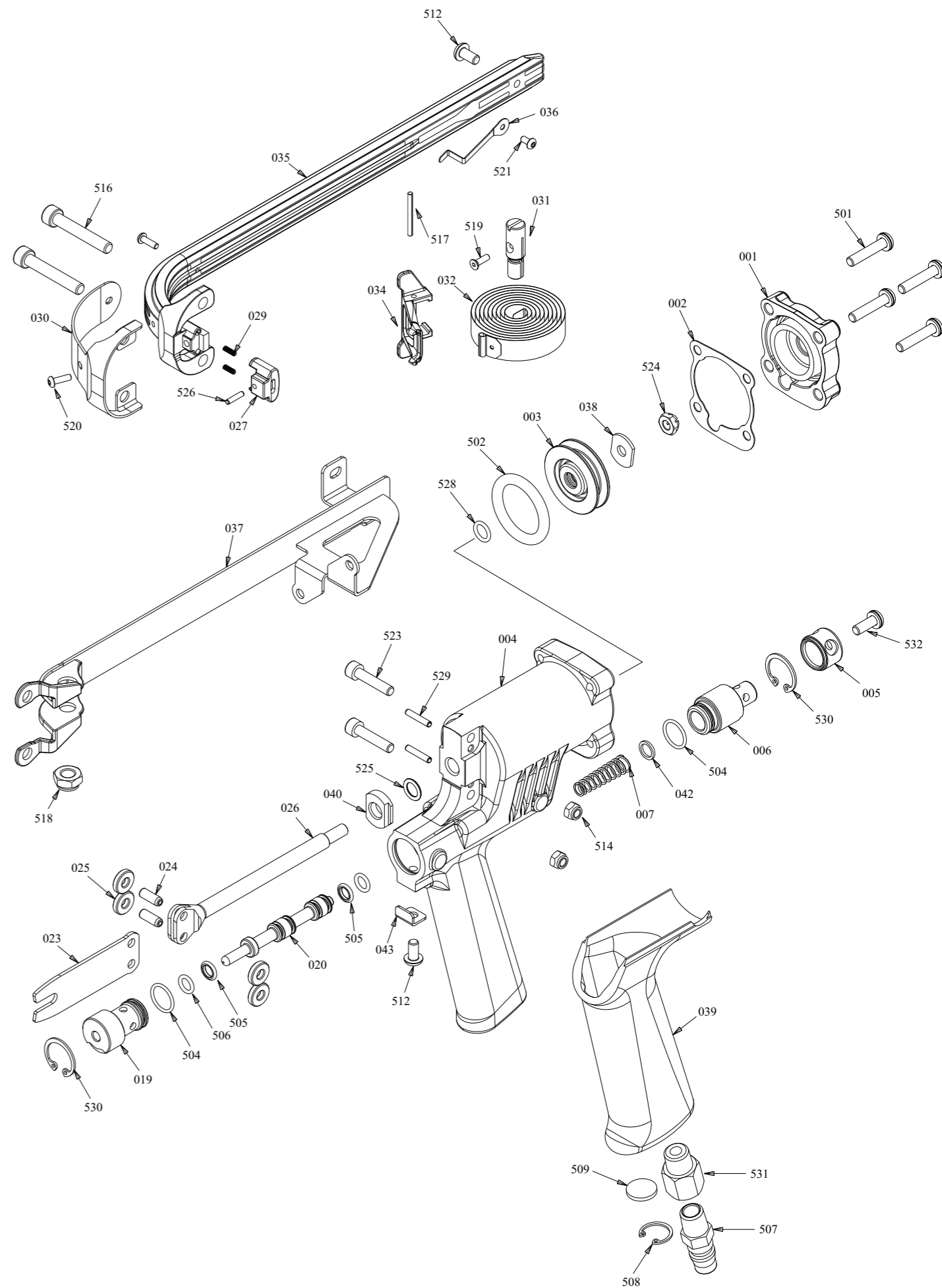
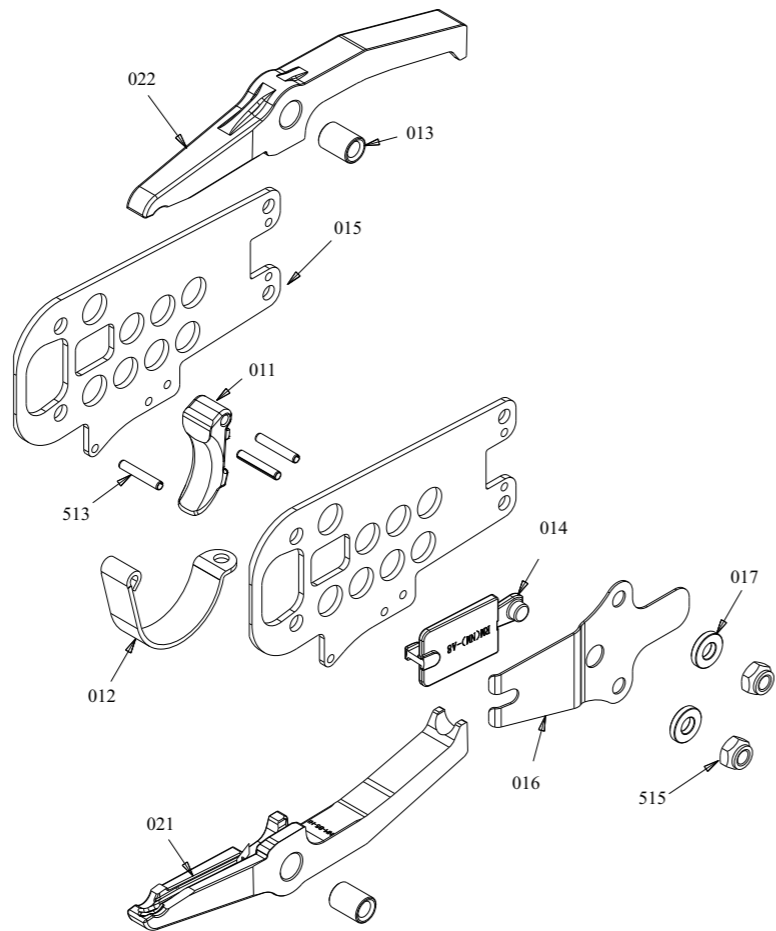
Gauge: 16

4,8 ÷ 6,8



| Ref. No. | Part No. | Descrizione | Description |
|----------|----------|-------------|-------------|
|----------|----------|-------------|-------------|

| | | | |
|-----|-------------|----------------------|-----------------|
| 001 | 2HR23M-A001 | Testa | Head |
| 002 | 2HR23M-A002 | Guarnizione testa | Head gasket |
| 003 | 2HR20M-A003 | Pistone | Piston |
| 004 | 2HR20M-D004 | Corpo | Body |
| 005 | 2HR23M-A005 | Deflettore | Deflector |
| 006 | 2HR20M-D006 | Valvola posteriore | Rear Valve |
| 007 | 2HR20M-D007 | Molla | Spring |
| 011 | 2HR20M-D011 | Grilletto | Trigger |
| 012 | 2HR23M-A012 | Protezione grilletto | Trigger guard |
| 013 | 2HR23M-A013 | Boccola | Bushing |
| 014 | 2HR23M-A014 | Blocco-punti | Latch |
| 015 | 2HR23M-C015 | Piastra laterale | Side Plate |
| 016 | 2HR23M-C016 | Molla blocco punti | Spring Latch |
| 017 | 2HR23M-A017 | Rondella | Washer |
| 019 | 2HR20M-D019 | Valvola anteriore | Front Valve |
| 020 | 2HR20M-D020 | Distanziale | Spacer |
| 021 | 2HR20M-C021 | Ganascia inferiore | Jaw, Lower |
| 022 | 2HR20M-C022 | Ganascia superiore | Jaw, Upper |
| 023 | 2HR20M-C023 | Battente | Blade |
| 024 | 2HR23M-A024 | Perno | Pin |
| 025 | 2HR23M-A025 | Bussola | Roller |
| 026 | 2HR20M-A026 | Pistone | Piston Rod |
| 027 | 2HR20M-A027 | Nasello | Magazine shoe |
| 029 | 2HR20M-A029 | Molla | Spring |
| 030 | 2HR23M-A030 | Protezione | Guard |
| 031 | 2HR20M-A031 | Bussola | Roller |
| 032 | 2HR20M-A032 | Molla | Spring |
| 034 | 2HR20M-D034 | Spingipunto | Pusher |
| 035 | 2HR20M-A035 | Caricatore | Magazine |
| 036 | 2HR23M-A036 | Molla | Clip |
| 037 | 2HR20M-A037 | Supporto caricatore | Rail Unit |
| 038 | 2HR23M-A038 | Rondella | Washer |
| 039 | 2HR23M-B039 | Grip | Grip |
| 040 | 2HR23M-A040 | Ammortizzatore | Bumper |
| 042 | 2HR23M-D042 | Rondella | Washer |
| 043 | 2HR23M-D043 | Fermo grilletto | Trigger block |
| 501 | 2HR23M-A501 | Vite | Screw |
| 502 | 2HR23M-A502 | O-Ring | O-Ring |
| 504 | 2HR23M-C504 | O-Ring | O-Ring |
| 505 | 2HR23M-D505 | O-Ring | O-Ring |
| 506 | 2HR23M-C506 | O-Ring | O-Ring |
| 507 | 2HR23M-A507 | Attacco rapido | Air Plug |
| 508 | 2HR23M-A508 | Anello elastico | C-Ring |
| 509 | 2HR23M-A509 | Silenziatore | Silencer |
| 512 | 2HR23M-B512 | Vite | Screw |
| 513 | 2HR23M-A513 | Perno | Spring Pin |
| 514 | 2HR23M-A514 | Dado | Nut |
| 515 | 2HR23M-A515 | Dado | Nut |
| 516 | 2HR23M-B516 | Vite | Screw |
| 517 | 2HR20M-A517 | Perno | Spring Pin |
| 518 | 2HR20M-C518 | Dado | Nut |
| 519 | 2HR20M-A519 | Vite | Screw |
| 520 | 2HR23M-A520 | Vite | Screw |
| 521 | 2HR23M-E521 | Vite | Screw |
| 523 | 2HR23M-A523 | Vite | Screw |
| 524 | 2HR23M-A524 | Dado | Nut |
| 525 | 2HR23M-A525 | O-Ring | O-Ring |
| 526 | 2HR20M-A526 | Perno | Spring Pin |
| 528 | 2HR23M-C528 | O-Ring | O-Ring |
| 529 | 2HR23M-C529 | Perno | Spring Pin |
| 530 | 2HR23M-C530 | C-Ring | C-Ring |
| 531 | 2HR20M-C531 | Adattatore Attacco | Air plug Adapt. |
| 532 | 2HR23M-D532 | Vite | Screw |



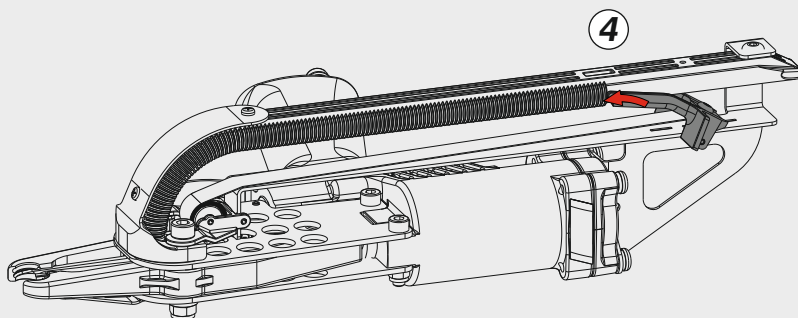
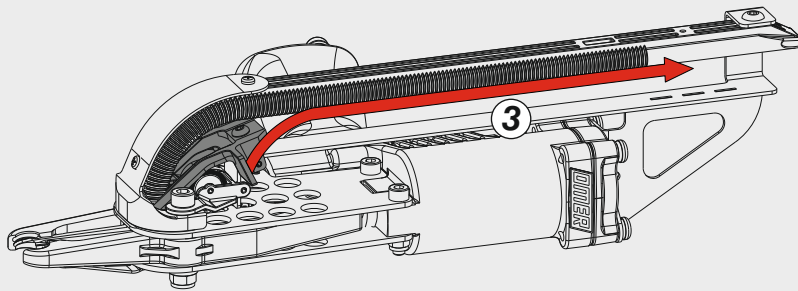
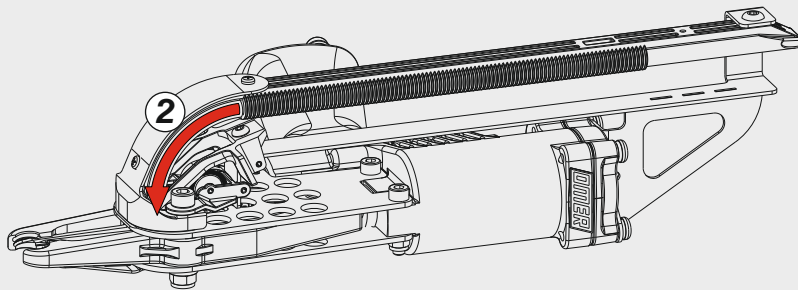
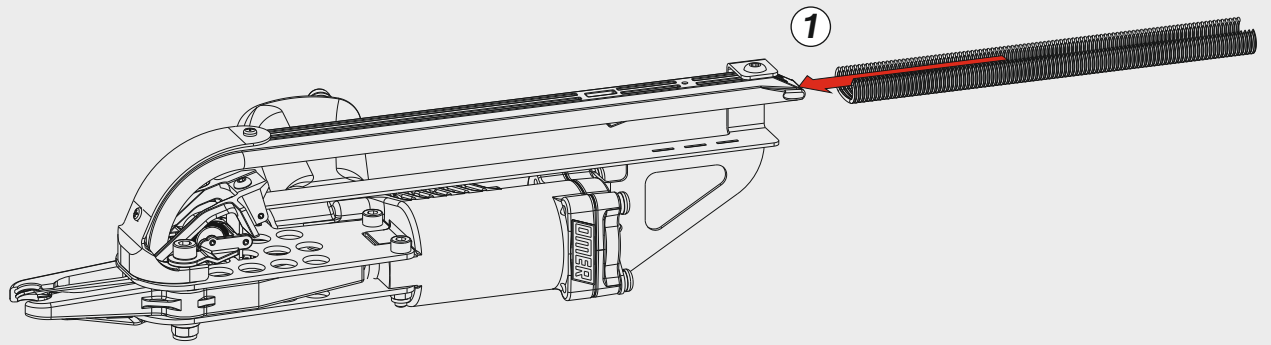
Parti di ricambio - Spare parts - Ersatzteile - Pièces de rechange - Recambios
Ανταλλακτικά - Partes sobresselentes - Wisselstukken - Yedek parçalar

HR20 M5

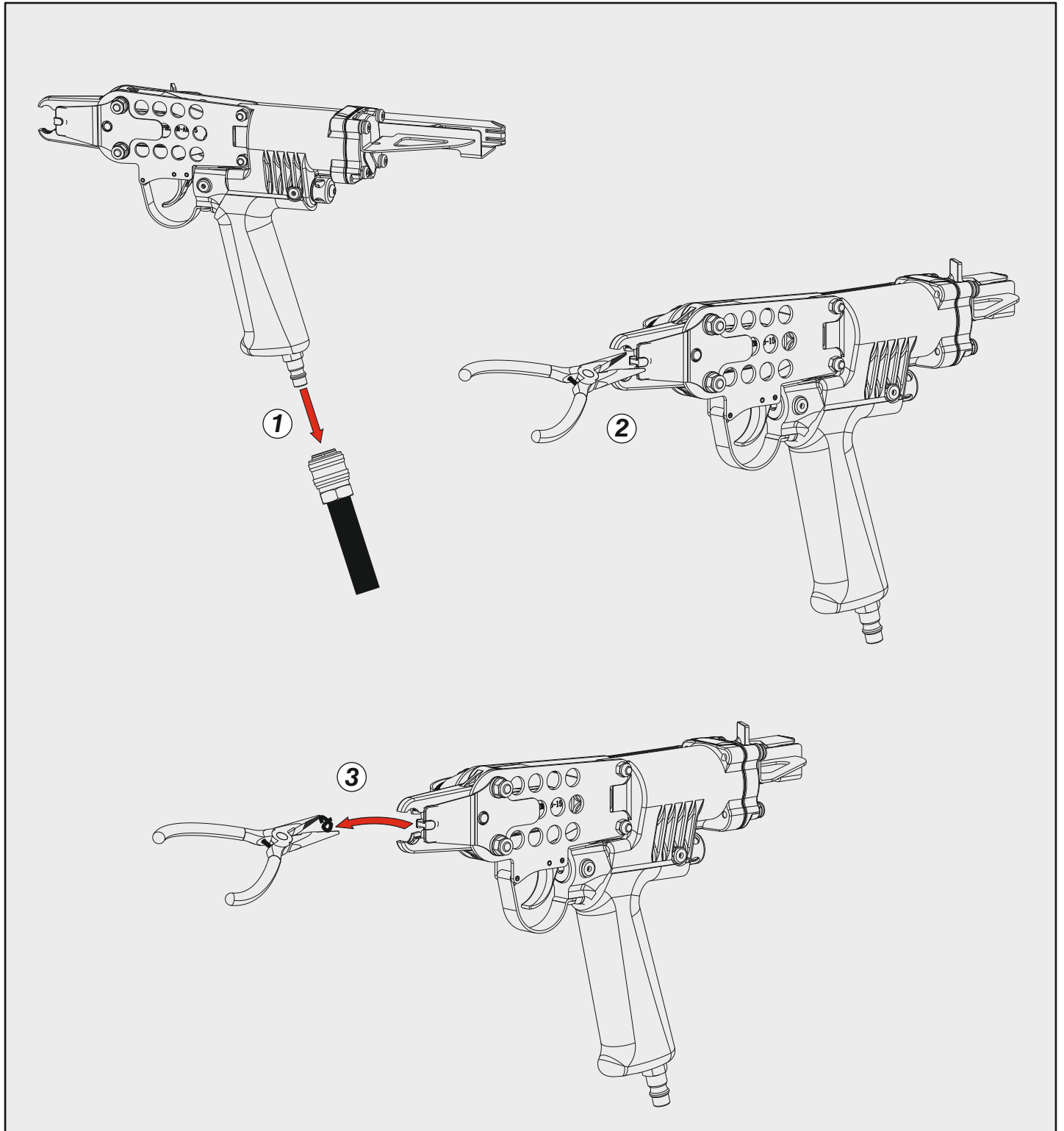
cod. 192HR20M5A4

Indice di modifica
Upgrade number

A4



Disincceppamento - Jam clearing - Staubeseitigung - Décoincement - Desatascamiento - Απεμπλοκή
Desencravamento - Deblokkering bij vastlopen - Sıkışma giderme



Dotazioni - Equipment - Ausstattung - Outillage - Dotaciones - Εξοπλισμός
Dotações - Uitrusting - Donanımlar

