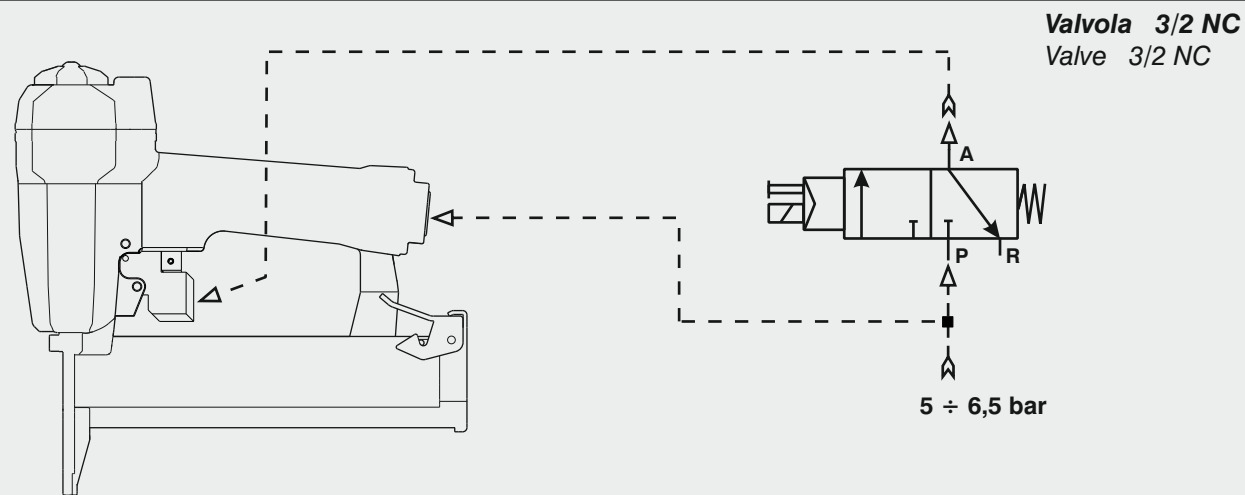
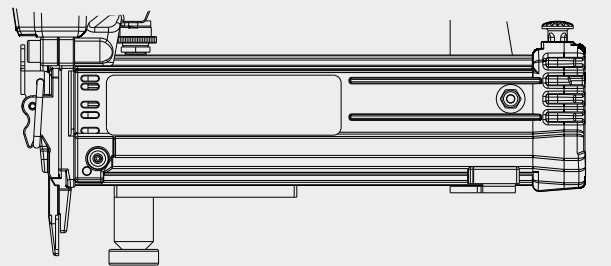


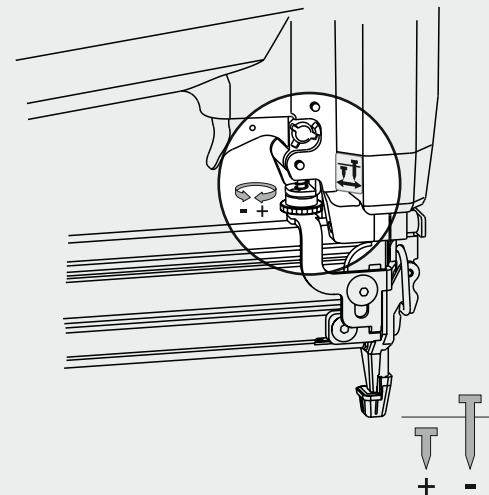
Schema di collegamento - Connecting diagram



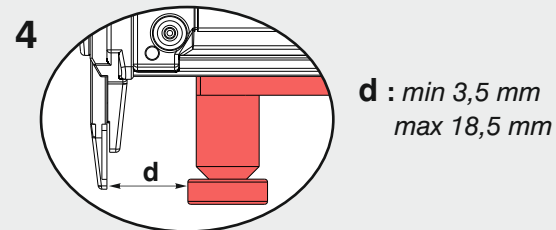
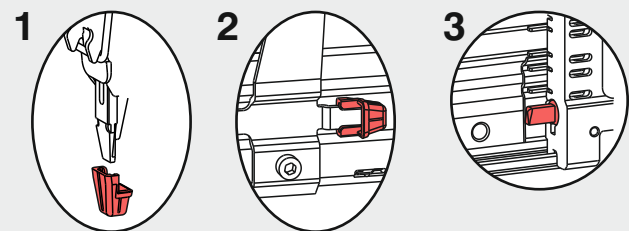
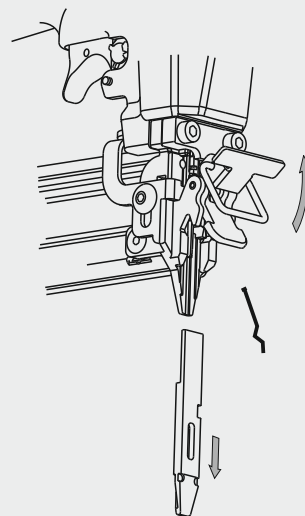
Caratteristiche - Features



Regolatore di profondità Depth adjustment



Disinceppamento macchina Quick clearance jammed nails



- 1 - **Puntale**
Tip
- 2 - **Porta puntale**
Tip holder
- 3 - **Blocco sparo a caricatore scarico**
Stop firing device to signal empty magazine
- 3 - **Distanziale regolabile**
Adjustable spacer

OMER

Manuale d'uso, manutenzione e parti di ricambio
Use, maintenance and spare parts manual
Gebrauchsanweisung, Instandhaltungsrichtlinien und Ersatzteile
Manuel d'utilisation, entretien et pièces de rechange
Manual de uso, mantenimiento y repuestos
Εγχειρίδιο χρήσης, συντήρησης και ανταλλακτικών
Manual de utilização, manutenção e partes sobresselentes
Handleiding voor gebruik, onderhoud en reservedeelslste
Brugsanvisning, vedligeholdelse og reservedeelslste

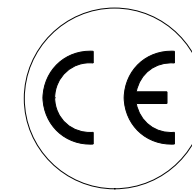
Parte 2
Part 2
Teil 2
Partie 2
Part 2
2° Μερους
Parte 2
Deel 2
Del 2



12.40-52

cod. 1221200-52

1221200-52_1240-52_2 200117 IV



Dati tecnici Technical data Technische daten	Données techniques Datos tècnicos Τεχνικά χαρακτηριστικά	Dados tècnicos Technischegegevens Tekniske data
Misure impieghiabili mm Usable lengths mm Gebrauchliche Längen mm	Mesures utilisable mm Medidas que se pueden emplear mm Διαστάσεις σε μμ	Medidas que se podem utilizar mm Te gebruiken engtes in mm Brugbare laengder i mm
Capacità caricatore n° punti Magazine capacity No. of fasteners Magazinkapazität Nägel	Capacité chargeur n° de points Capacidad cargador n° puntos Δυνατότητα γεμιστερα, σπινδυτερας	Capacitade carregador n° pontos Capaciteit magazijn in aantal spijkers Kapacitet af magasin antal klemme
Pressione d'esercizio Working pressure Betriebsdruck	Pression de fonctionnement Presión de trabajo Πίεση λειτουργιασ ατμ.	Pressao de trabalho Werkdruk Arbejds tryk bar
Consumo aria litri/colpo Air consumption litres/shot Luftverbrauch Liter/Schlag	Consumption air litre/coup Consumo aire-litros/golpe Καταναλοση αερα λ/ξτρωπημα	Consumo ar litro/golpe Luchtverbruik liter/schot Luftforbrug liter/skud
Peso kg Weight kg Gewicht kg	Poids kg Peso kg Βαρος κγ	Peso kg Gewicht in kg Vaegt kg
Dimensioni (AxBxH) mm Dimensions mm Große mm	Dimension mm Dimensiones mm Δυνατότητα γεμιστερα, σπινδυτερας	Dimencoes mm Afmetingen in mm Dimensioner mm

EN 12549 :1999	ISO 11201 :1995	
Pressione sonora in pos. operatore Sound pressure at the workstation Lärmintensität am Arbeitsplatz	Pression acoustique près de l'opérateur Presión sonora en posición encargado Ακουστική πίεση στη θέση χειριστου	Intensidade sonora perto do operador Geluidssterkte op de werkplek Lydstyrke på operatorposten
		$L_{pA, 1s}$ (Rif. 20μPa) 78,8 dB(A)

EN 12549 :1999	ISO 3744 :1994	
Potenza sonora emessa Emitted sound power Ausgestrahlte Lärmintensität	Puissance acoustique émise Potencia sonora emitida Ακουστική ισχυ	Potência sonora emitida Uitgestraalde geluidssterkte Udsendt lydstryke
		$L_{WA, 1s}$ (Rif. 1pW) 88,5 dB(A)

EN 28662 :1992	ISO 5349 :1986	ISO 8662 -11	
Valore medio ponderato di vibrazione sull'impugnatura Weighted mean value of vibration on the grip Mitteler Vibrationswert, am Griff Gemessen	Valeur moyenne pondérée de vibration mesurée sur la poignée Valor medio ponderado de vibracion medida en la empunadura Μεσος ορος μετρησις κραδασιμων στη χειρολαβη	Valor medio ponderado de vibracao medida no punho Gewogen gemiddelde vibratiewaarde Middelvaerdi af vibrationer pa handtaget	<2,5 m/s²

Tipo di punto
Type of fastener
Befestigungselement
Type d'agrafe
Τυπος καρφιου
Τυπο de ponto
Type nietjes
Tilspændingstype

Brads 12

1x1,25

1,9

12

15

18

21

25

30

32

35

38

40

7/16"

5/8"

11/16"

7/8"

1"

1-3/16"

1-1/4"

1-3/8"

1-1/2"

1-9/16"

Gauge: 18

Head width: .075"

Pins I

1x1,25

12

15

18

21

25

30

32

35

38

40

7/16"

5/8"

11/16"

7/8"

1"

1-3/16"

1-1/4"

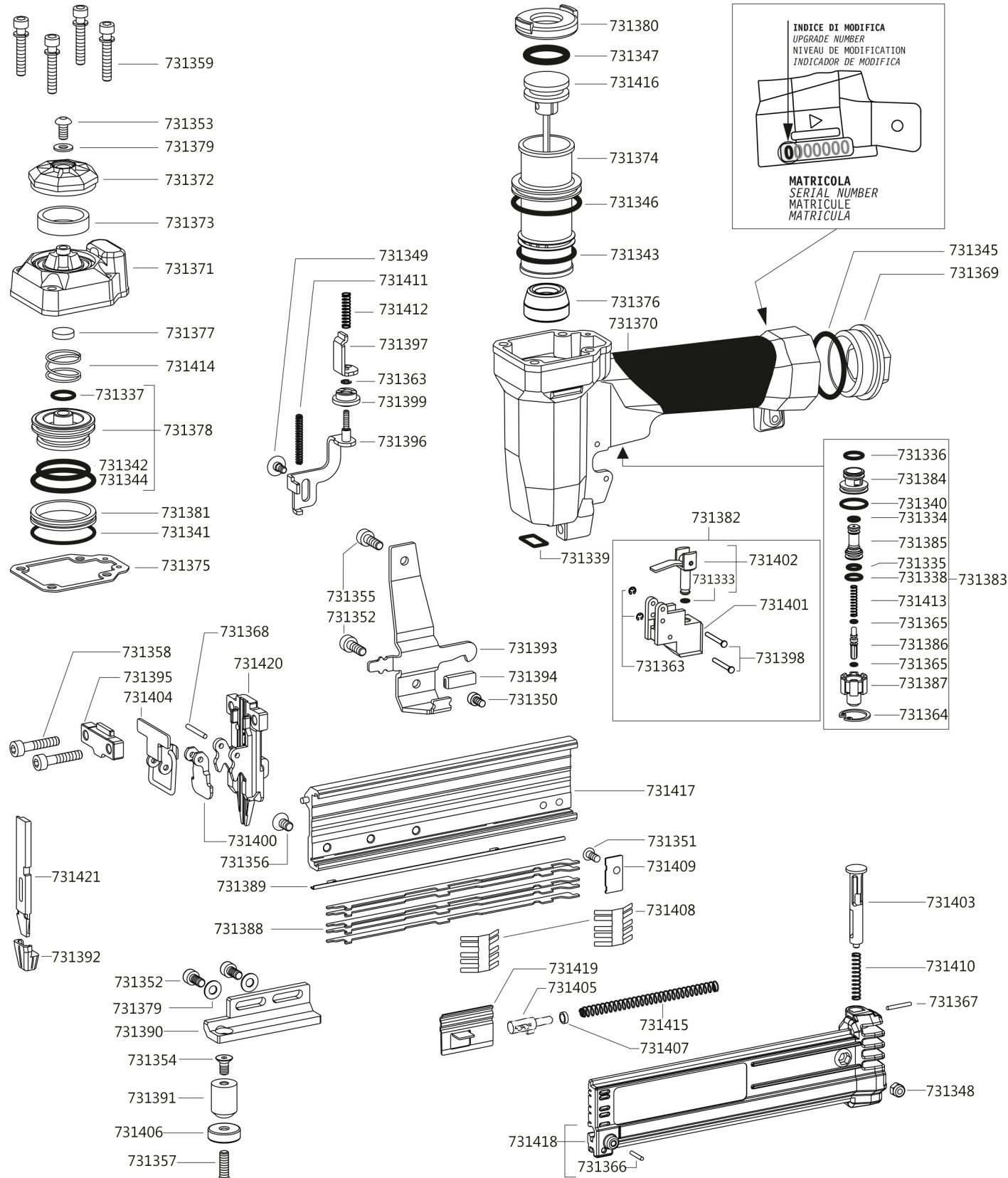
1-3/8"

1-1/2"

1-9/16"

Gauge: 18

Parti di ricambio - Spare parts - Ersatzteile - Pièces de rechange - Piezas de repuesto
 Ανταλλακτικά - Partes sobresselentes - Tabel te raadplegen - Reservedele



INDICE DI MODIFICA
 UPGRADE NUMBER
 NIVEAU DE MODIFICATION
 INDICADOR DE MODIFICA

MATRICOLA
 SERIAL NUMBER
 MATRICULE
 MATRICULA

731382

731402

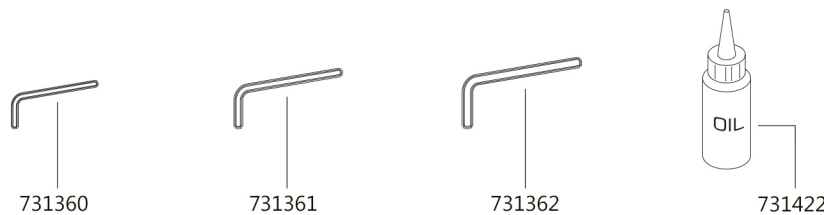
731333

731401

731363

731398

Dotazioni - Equipment - Ausrüstung - Équipements - Equipamiento - Παρεχόμενα
 Equipamento - Uitrusting - Udstyr



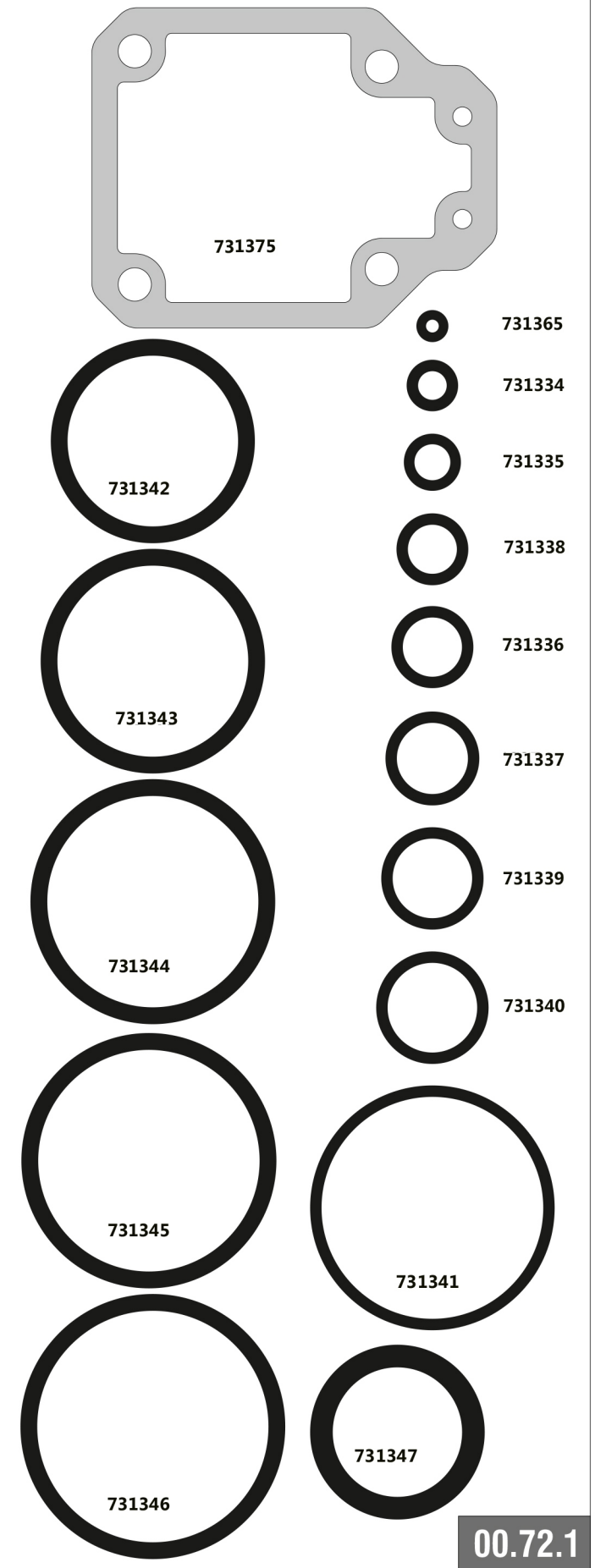
12.40-52

cod. 1221200-52

Parti di ricambio - Spare parts - Ersatzteile - Pièces de rechange - Piezas de repuesto
 Ανταλλακτικά - Partes sobresselentes - Tabel te raadplegen - Reservedele

Code Minit	Code OMER	Description
731333	00.07	O-Ring
731334	00.08	O-Ring
731335	00.09	O-Ring
731336	00.12	O-Ring
731337	00.14	O-Ring
731338	00.15	O-Ring
731339	00.16	O-Ring
731340	00.18	O-Ring
731341	00.38	O-Ring
731342	01.32	O-Ring
731343	01.35	O-Ring
731344	01.38	O-Ring
731345	01.40	O-Ring
731346	01.41	O-Ring
731347	02.28	O-Ring
731348	04.00	Nut
731349	04.06.5	Screw
731350	04.08	Screw
731351	04.10.1	Screw
731352	05.10	Screw
731353	05.10.1	Screw
731354	05.10.2	Screw
731355	05.12	Screw
731356	05.12.2	Screw
731357	05.16.5	Screw
731358	05.25	Screw
731359	05.30	Screw
731360	07.25	Hex. bar wrench
731361	07.30	Hex. bar wrench
731362	07.40	Hex. bar wrench
731363	09.02	Elastic ring
731364	09.18	Elastic ring
731365	10.55	O-Ring
731366	13.12.1	Pin
731367	12.16.1	Pin
731368	13.22.2	Pin
731369	17.28	Inlet cap
731370	21.27	Body
731371	22.21	Head
731372	25.40	Exhaust deflector
731373	25.41	Silencer
731374	26.21	Cylinder
731375	28.20	Head gasket
731376	32.22	Bumper
731377	39.40	Exhaust seal
731378	40.22	Valve ass'y
731379	43.11	Washer
731380	44.22	Gasket
731381	45.20	Ring
731382	50.25.8	Remote control
731383	50.41	Trigger valve ass'y
731384	51.41	Trigger valve housing
731385	53.41	Valve piston
731386	54.41	Trigger valve
731387	55.41	Bush
731388	59.21	Spacer
731389	59.22	Sliding guide
731390	69.10	Spacer
731391	69.10.1	Spacer
731392	70.40	Contact tip
731393	71.22	Support
731394	72.22	Slider-stop
731395	74.40.1	Nose guide
731396	75.43	Safety
731397	75.43.1	Contact arm
731398	76.05	Pin
731399	76.25	Adjusting wheel
731400	77.42	Safety nose plate
731401	77.24.8	Safety guide
731402	81.26	Piston
731403	80.41	Trigger
731404	80.42	Nose plate lock
731405	87.22.1	Spring bearing
731406	87.28	Bearing
731407	87.42	Signal washer
731408	90.20	Spring
731409	90.21	Spacer holder
731410	91.02	Spring
731411	91.41	Spring
731412	91.42	Spring
731413	91.73	Spring
731414	92.01X	Spring
731415	93.44	Spring
731416	22.20.22	Driver
731417	52.21.22	Magazine
731418	63.20.22	Slider
731419	72.20.22	Pusher
731420	82.20.22	Nose
731421	92.20.22	Nose plate
731422	D01	Oiler

Guarnizioni - O-Rings - Dichtungen - Joints - Kit O-Rings - Ασπινγχακτα - Kit O-Rings - O-ringen - Pakninger



00.72.1

1221200-52_1240-52_2 200117 IV

12.40-52

cod. 1221200-52

Indice di modifica
 Upgrade number

2

2427448