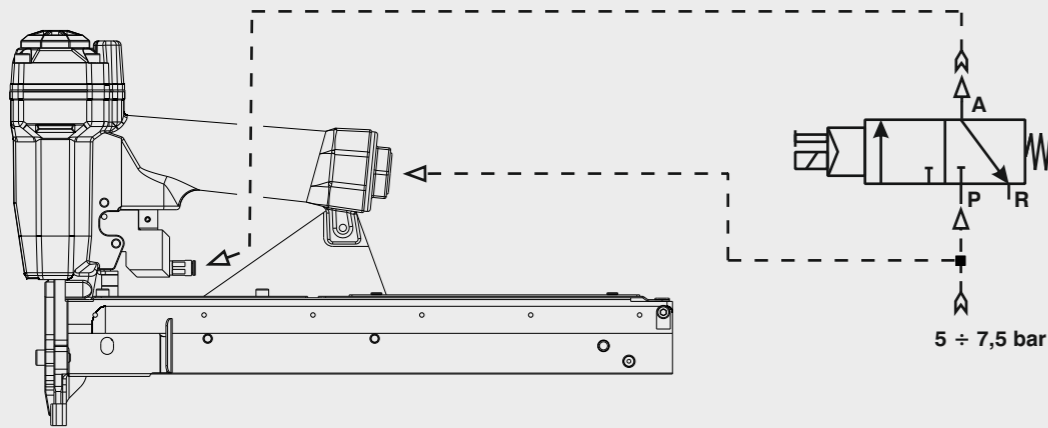


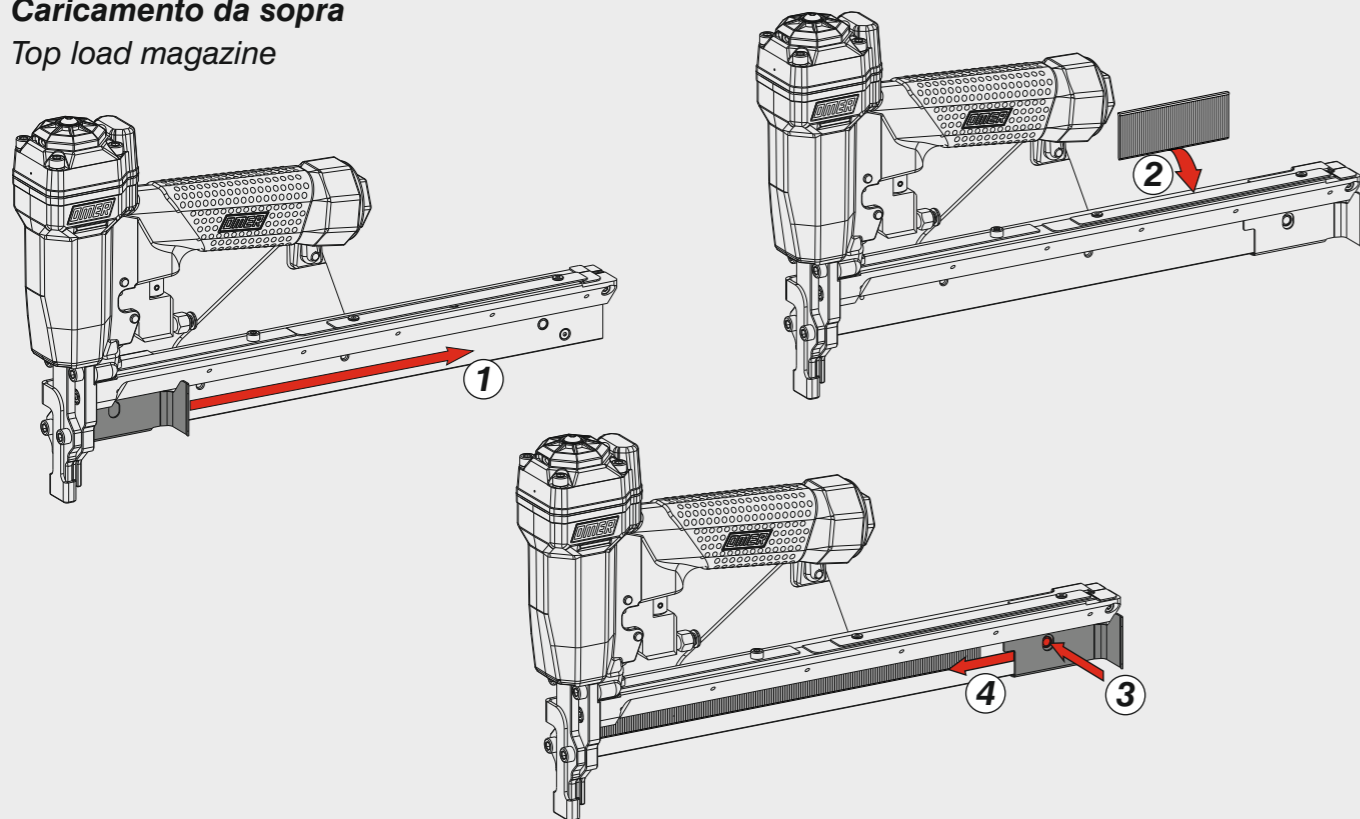
Schema di collegamento - Connecting diagram

Valvola 3/2 NC
Valve 3/2 NC

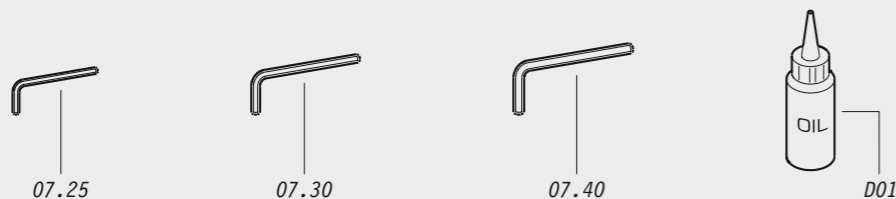


Caricamento - Loading - Laden - Chargement - Carga - Γέμισμα - Carregamento - Laden - Yükleme

Caricamento da sopra
Top load magazine



Dotazioni - Equipment - Ausstattung - Outillage - Dotaciones - Εξοπλισμός
Dotações - Uitrusting - Donanımlar



OMER

Manuale d'uso, manutenzione e parti di ricambio
Manual for use, maintenance and spare parts
Bedienungs- und Wartungshandbuch sowie Ersatzteilleiste
Mode d'emploi, de maintenance et pièces de rechange
Manual de uso, mantenimiento y recambios
Εγχειρίδιο χρήσης, συντήρησης και ανταλλακτικών
Manual de uso, manutenção e peças sobresselentes
Handleiding voor gebruik, onderhoud en wisselstukken
Kullanım, bakım ve yedek parça kılavuzu

Parte 2
Part 2
Teil 2
Partie 2
Part 2
Μέρος 2
Parte 2
Deel 2
Kısım 2



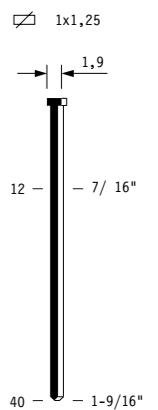
12.40 CL2-112

cod. 12212540-112

| Dati tecnici Technical data Technische Daten | Caractéristiques techniques Datos técnicos Τεχνικά χαρακτηριστικά | Dados técnicos Technische gegevens Teknik veriler |
|--|--|---|
| Misure impiegabili mm Lengths mm Verwendbare Nagellänge mm | Dimensions utiles mm Medidas de longitud mm Μήκος Αναλωσίμου - mm | Medidas utilizáveis mm Toepasbare afmetingen mm Boy mm |
| Capacità caricatore n° punti Magazine capacity Magazinkapazität Nägel | Capacité chargeur n° de points Capacidad cargador n° puntos Δωνατοτητα γεμιστερα | Capacidade carregador n° pontos Capaciteit magazijn in aantal spijkers Dergi kapasitesi |
| Pressione d'esercizio Operating pressure Betriebsdruck | Pression d'exercice Presión de servicio Πίεση λειτουργίας | Pressão de serviço Werkdruk Çalışma basıncı |
| Consumo aria litri/colpo Air consumption litres/stroke Luftverbrauch Liter/Schuss | Consumation d'air litres/coup Consumo aire litros/golpe Κατανάλωση αέρα - λίτρα/βολή | Consumo ar litros/disparo Luchtverbruik liter/slag Litre/vuruz hava tüketimi |
| Peso kg Weight kg Gewicht kg | Poids kg Peso kg Βάρος - kg | Peso kg Gewicht in kg Ağırlık kg |
| Dimensioni mm Dimensions mm Abmessungen mm | Dimensions mm Dimensiones mm Διαστάσεις mm | Dimensões mm Afmetingen mm Boyutlar mm |
| UNI EN 12549 :2009 | UNI EN ISO 3746 :2011 | UNI EN ISO 4871 :2009 |
| Potenza sonora emessa Sound power emitted Emittierte Schallleistung | Puissance sonore émise Potencia sonora emitida Εκπεμπόμενη ηχητική ισχύς | Potência sonora emitida Geëmitteerd geluidsvermogen Çıkan ses gücü (ses desibeli) |

Tipo di punto
Type of fastener
Befestigungsmittel
Type de rivet
Tipo de punto
Τύπος αναλωσίμου
Tipo de agrafo
Type nietjes
Zimba ve çivi tipleri

Brads 12



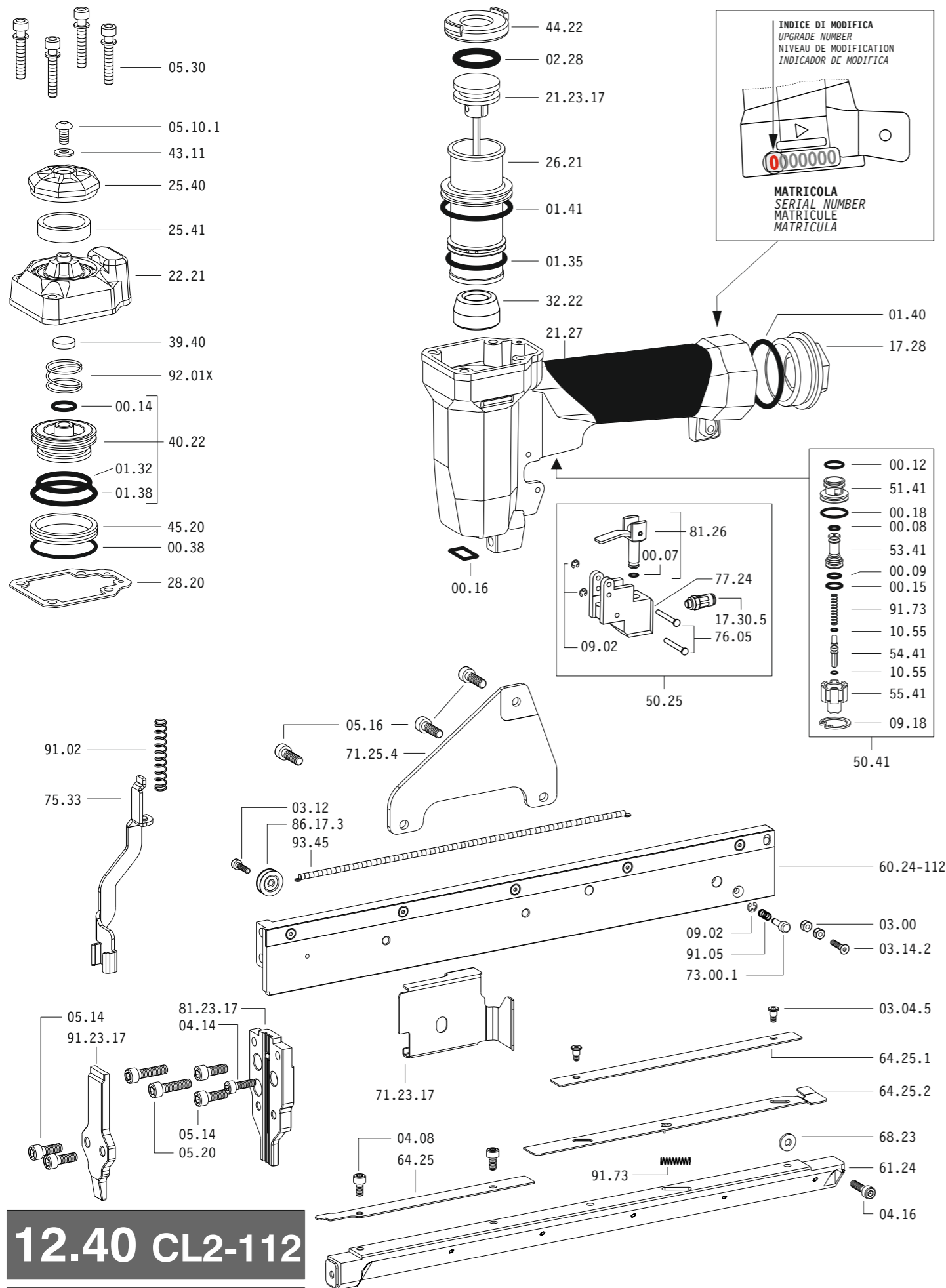
Head width: .075"
Gauge: 18

**DO NOT
HANDHELD
THIS TOOL**



12212540-112_1240CL2-112_2_rev/20 05/08/2022 DV

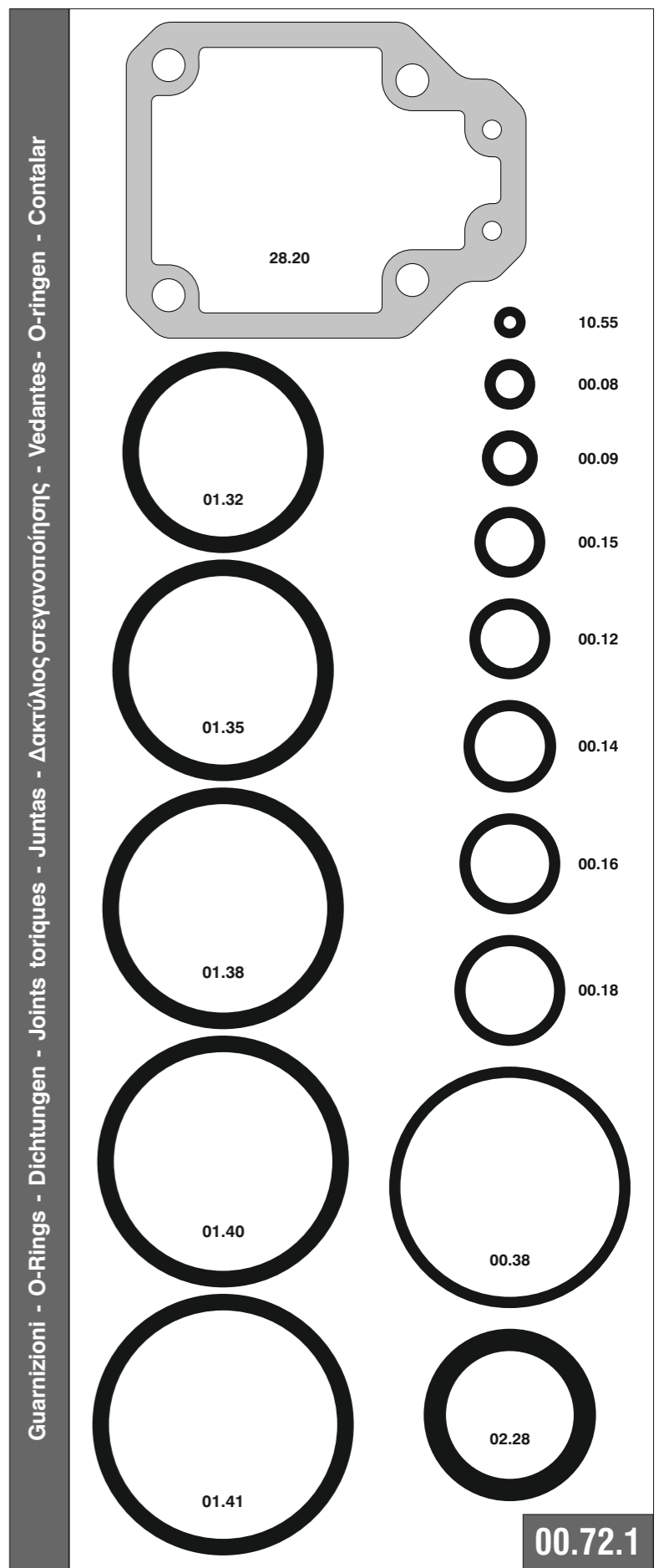
Parti di ricambio - Spare parts - Ersatzteile - Pièces de rechange - Recambios
Ανταλλακτικά - Partes sobresselentes - Wisselstukken - Yedek parçalar



12.40 CL2-112
cod. 12212540-112

Parti di ricambio - Spare parts - Ersatzteile - Pièces de rechange - Recambios
Ανταλλακτικά - Partes sobresselentes - Wisselstukken - Yedek parçalar

| Cod. | Descrizione | Description |
|-----------|----------------------|-----------------------|
| 00.07 | O-Ring | O-Ring |
| 00.08 | O-Ring | O-Ring |
| 00.09 | O-Ring | O-Ring |
| 00.12 | O-Ring | O-Ring |
| 00.14 | O-Ring | O-Ring |
| 00.15 | O-Ring | O-Ring |
| 00.16 | O-Ring | O-Ring |
| 00.18 | O-Ring | O-Ring |
| 00.38 | O-Ring | O-Ring |
| 01.32 | O-Ring | O-Ring |
| 01.35 | O-Ring | O-Ring |
| 01.38 | O-Ring | O-Ring |
| 01.40 | O-Ring | O-Ring |
| 01.41 | O-Ring | O-Ring |
| 02.28 | O-Ring | O-Ring |
| 03.00 | Dado | Nut |
| 03.04.5 | Vite | Screw |
| 03.12 | Vite | Screw |
| 03.14.2 | Vite | Screw |
| 04.08 | Vite | Screw |
| 04.14 | Vite | Screw |
| 04.16 | Vite | Screw |
| 05.10.1 | Vite | Screw |
| 05.14 | Vite | Screw |
| 05.16 | Vite | Screw |
| 05.20 | Vite | Screw |
| 05.30 | Vite | Screw |
| 07.25 | Chiave esagonale | Hex. bar wrench |
| 07.30 | Chiave esagonale | Hex. bar wrench |
| 07.40 | Chiave esagonale | Hex. bar wrench |
| 09.02 | Anello elastico | Elastic ring |
| 09.18 | Anello elastico | Elastic ring |
| 10.55 | O-Ring | O-Ring |
| 17.28 | Tappo | Inlet cap |
| 17.30.5 | Attacco | Connection |
| 21.27 | Corpo | Body |
| 22.21 | Testa | Head |
| 25.40 | Deflettore | Exhaust deflector |
| 25.41 | Silenziatore | Silencer |
| 26.21 | Cilindro | Cylinder |
| 28.20 | Guarnizione testa | Head gasket |
| 32.22 | Ammortizzatore | Bumper |
| 39.40 | Guarnizione scarico | Exhaust seal |
| 40.22 | Valvola completa | Valve ass'y |
| 43.11 | Rondella | Washer |
| 44.22 | Guarnizione | Gasket |
| 45.20 | Anello valvola | Ring |
| 50.25 | Comando a distanza | Remote control |
| 50.41 | Pulsante completo | Trigger valve ass'y |
| 51.41 | Boccola pulsante | Trigger valve housing |
| 53.41 | Pistone servovalvola | Valve piston |
| 54.41 | Pulsante | Button |
| 55.41 | Raccordo pulsante | Bush |
| 60.24-112 | Guida sx | Left guide |
| 61.24 | Guida dx | Right guide |
| 64.25 | Carter | Hold down |
| 64.25.1 | Carter posteriore | Rear hold down |
| 64.25.2 | Copertura | Cover |
| 68.23 | Rondella | Washer |
| 71.25.4 | Reggicaricatore | Support |
| 73.00.1 | Perno | Pin |
| 75.33 | Sicura | Safety |
| 76.05 | Perno | Pin |
| 77.24 | Guida | Guide |
| 81.26 | Pistoncino | Piston |
| 86.17.3 | Carrucola | Pulley |
| 91.02 | Molla | Spring |
| 91.05 | Molla | Spring |
| 91.73 | Molla | Spring |
| 92.01X | Molla | Spring |
| 93.45 | Molla | Spring |
| 21.23.17 | Battente | Driver |
| 71.23.17 | Spingipunto | Pusher |
| 81.23.17 | Controtestina | Nose |
| 91.23.17 | Testina | Nose plate |
| D01 | Bocchetta olio | Oiler |



12.40 CL2-112 cod. 12212540-112 Indice di modifica Upgrade number **2**

