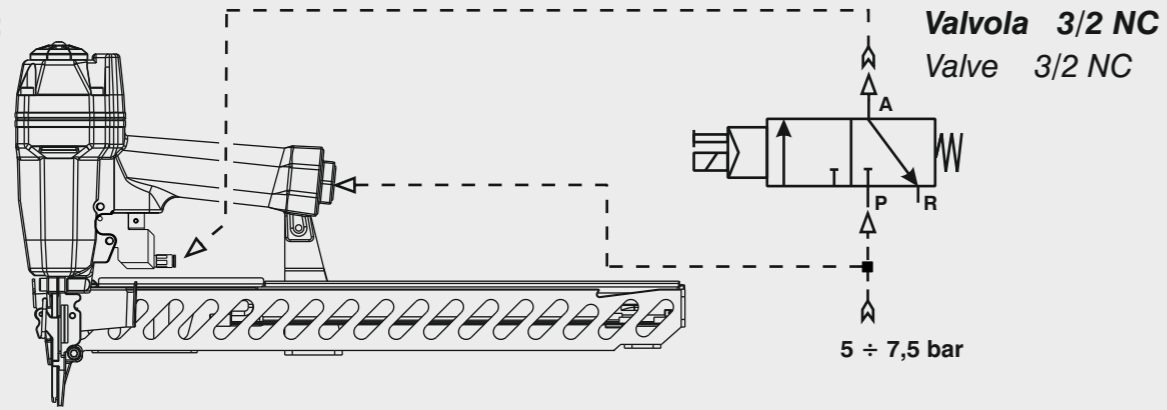


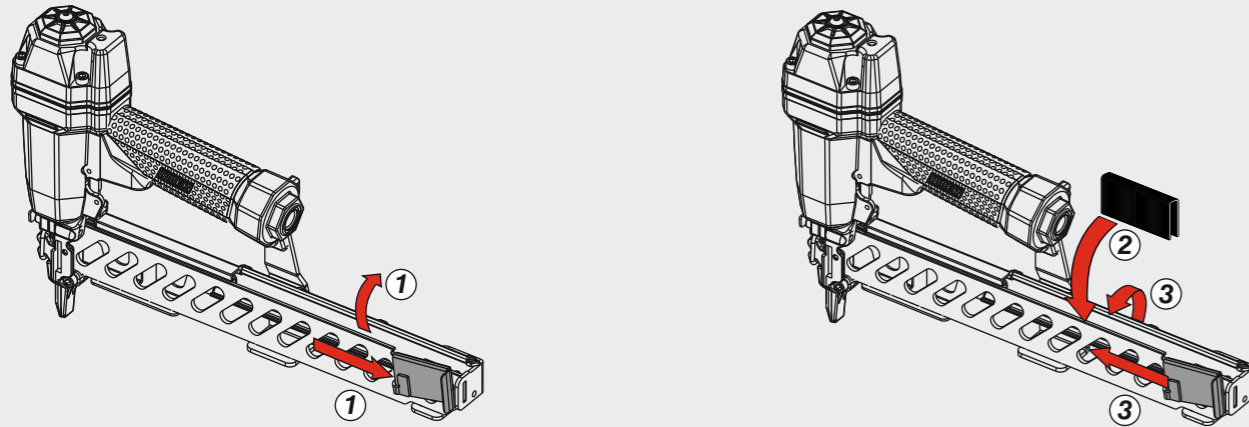
Collegamento - Connection

Collegamento:
Connection:

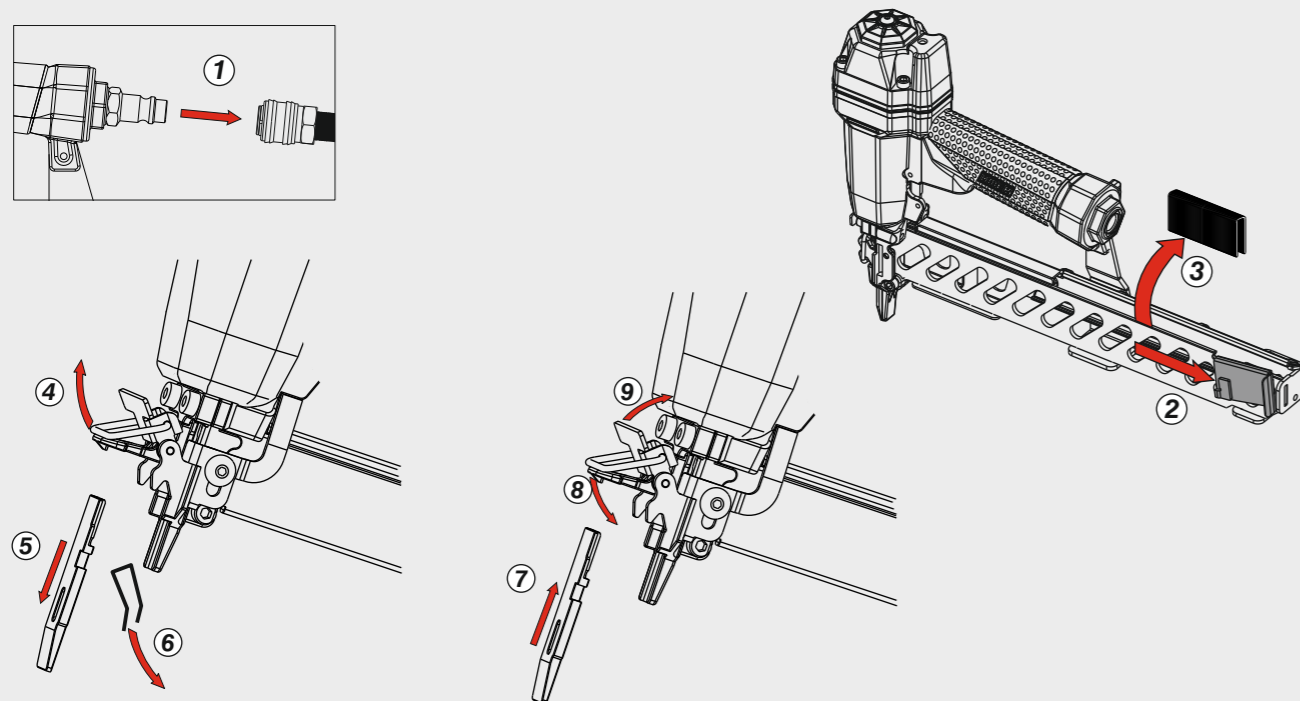


Caricamento - Loading - Laden - Chargement - Carga - Γέμισμα - Carregamento - Laden - Yükleme

Caricamento da sopra
Top load magazine



Disinceppamento - Jam clearing - Staubeseitigung - Décoincement - Desatascamiento - Απεμπλοκή
Desencravamento - Deblokkering bij vastlopen - Sıkışma giderme



OMER®

Manuale d'uso, manutenzione e parti di ricambio
Manual for use, maintenance and spare parts
Bedienungs- und Wartungshandbuch sowie Ersatzteilleiste
Mode d'emploi, de maintenance et pièces de rechange
Manual de uso, mantenimiento y recambios
Εγχειρίδιο χρήσης, συντήρησης και ανταλλακτικών
Manual de uso, manutenção e peças sobresselentes
Handleiding voor gebruik, onderhoud en wisselstukken
Kullanım, bakım ve yedek parça kılavuzu

Parte 2
Part 2
Teil 2
Partie 2
Part 2
Μέρος 2
Parte 2
Deel 2
Kısım 2



SX.38 CLD3-3

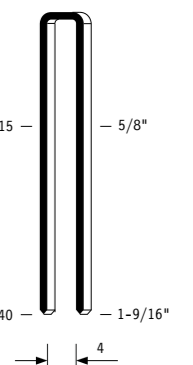
cod. 14270B4530D-3

| Dati tecnici Technical data Technische Daten | Caractéristiques techniques Datos técnicos Τεχνικά χαρακτηριστικά | Dados técnicos Technische gegevens Teknik veriler |
|--|---|---|
| Misure impiegabili mm Lengths mm Verwendbare Nagellänge mm | Dimensions utiles mm Medidas de longitud mm Μήκος Αναλωσίμου - mm | Medidas utilizáveis mm Toepasbare afmetingen mm Boy mm |
| Capacità caricatore n° punti Magazine capacity Magazinkapazität Nägel | Capacité chargeur n° de points Capacidad cargador n° puntos Δωνατοτητα γεμιστερα | Capacidade carregador n° pontos Capaciteit magazijn in aantal spijkers Dergi kapasitesi |
| Pressione d'esercizio Operating pressure Betriebsdruck | Pression d'exercice Presión de servicio Πίεση λειτουργίας | Pressão de serviço Werkdruk Çalışma basıncı |
| Consumo aria litri/colpo Air consumption litres/stroke Luftverbrauch Liter/Schuss | Consommation d'air litres/coup Consumo aire litros/golpe Κατανάλωση αέρα - λίτρα/βολή | Consumo ar litros/disparo Luchtverbruik liter/slag Litre/vuruş hava tüketimi |
| Peso kg Weight kg Gewicht kg | Poids kg Peso kg Βάρος - kg | Peso kg Gewicht in kg Ağırlık kg |
| Dimensioni mm Dimensions mm Abmessungen mm | Dimensions mm Dimensiones mm Διαστάσεις mm | Dimensões mm Afmetingen mm Boyutlar mm |
| UNI EN 12549 :2009 | UNI EN ISO 3746 :2011 | UNI EN ISO 4871 :2009 |
| Potenza sonora emessa Sound power emitted Emittierte Schalleistung | Puissance sonore émise Potencia sonora emitida Εκπεμπόμενη ηχητική ισχύς | Potência sonora emitida Geëmitteerd geluidsvermogen Çıkan ses gücü (ses desibeli) |

Tipo di punto
Type of fastener
Befestigungsmittel
Type de rivet
Tipo de punto
Τύπος αναλωσίμου
Tipo de agrafó
Type nietjes
Zimba ve çivi tipleri

SX

0,90x1,25



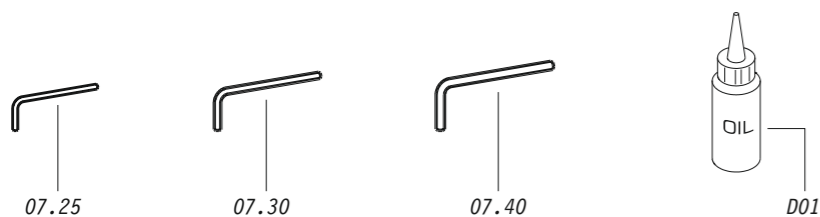
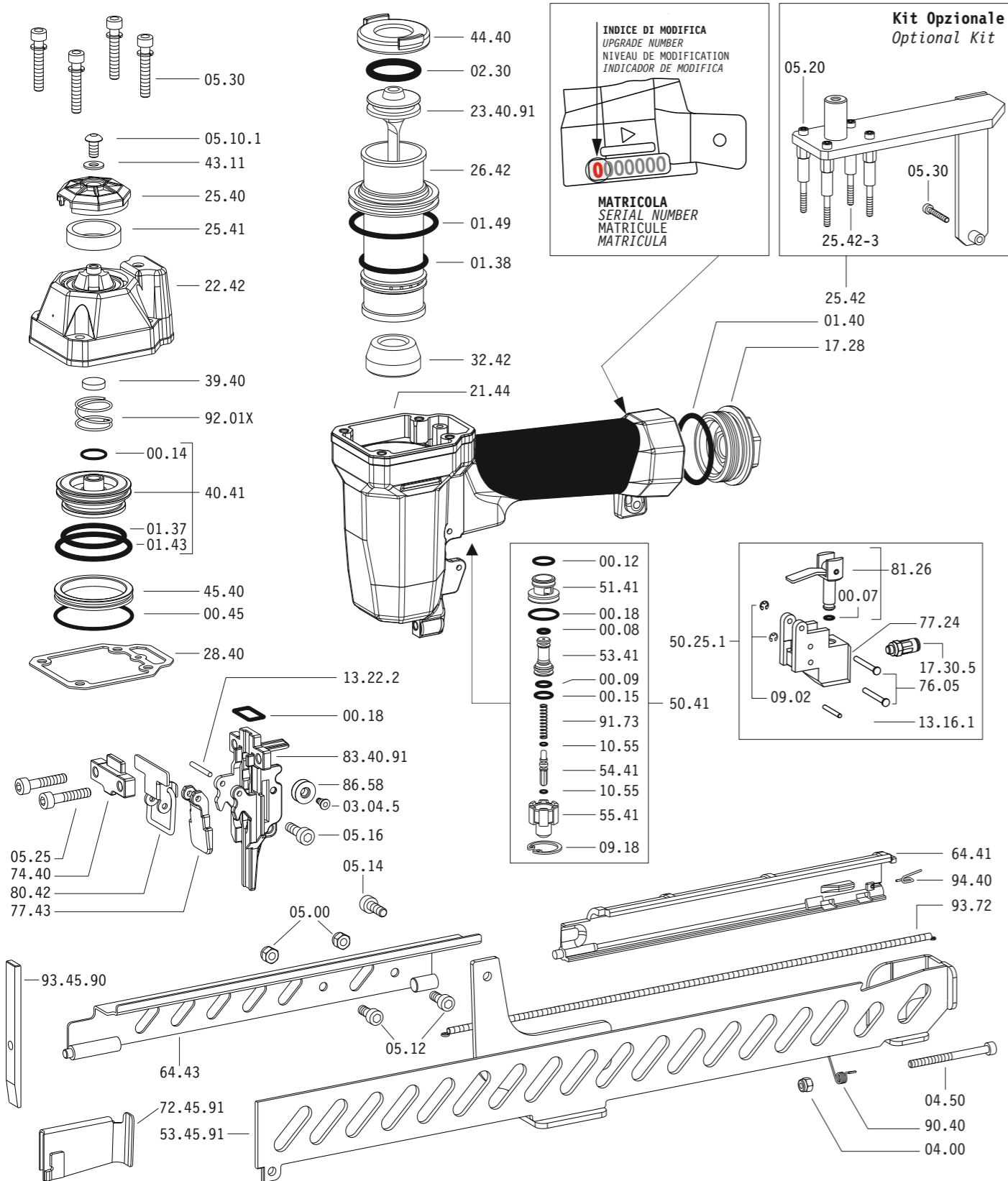
Crown: .232" (1/4")
Gauge: 18

**DO NOT
HANDHELD
THIS TOOL**



14270B4530D-3_SX38CLD3-3_2_rev20_02/02/2021 IV

Parti di ricambio - Spare parts - Ersatzteile - Pièces de rechange - Recambios
Ανταλλακτικά - Partes sobresselentes - Wisselstukken - Yedek parçalar



SX.38 CLD3-3

cod. 14270B4530D-3

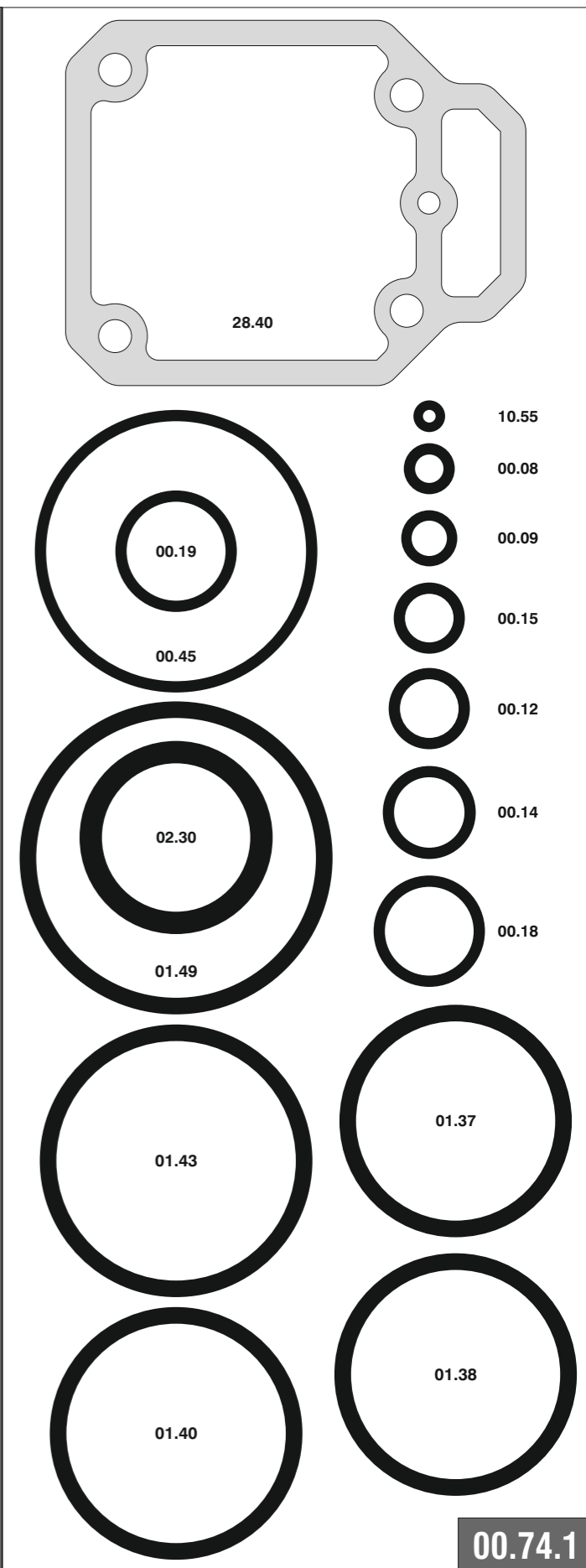
Parti di ricambio - Spare parts - Ersatzteile - Pièces de rechange - Recambios
Ανταλλακτικά - Partes sobresselentes - Wisselstukken - Yedek parçalar

| Cod. | Descrizione | Description |
|----------|----------------------|-----------------------|
| 00.07 | O-Ring | O-Ring |
| 00.08 | O-Ring | O-Ring |
| 00.09 | O-Ring | O-Ring |
| 00.12 | O-Ring | O-Ring |
| 00.14 | O-Ring | O-Ring |
| 00.15 | O-Ring | O-Ring |
| 00.18 | O-Ring | O-Ring |
| 00.45 | O-Ring | O-Ring |
| 01.37 | O-Ring | O-Ring |
| 01.38 | O-Ring | O-Ring |
| 01.40 | O-Ring | O-Ring |
| 01.43 | O-Ring | O-Ring |
| 01.49 | O-Ring | O-Ring |
| 02.30 | O-Ring | O-Ring |
| 03.04.5 | Vite | Screw |
| 04.00 | Dado | Nut |
| 04.50 | Vite | Screw |
| 05.00 | Dado | Nut |
| 05.10.1 | Vite | Screw |
| 05.12 | Vite | Screw |
| 05.14 | Vite | Screw |
| 05.16 | Vite | Screw |
| 05.20 | Vite | Screw |
| 05.25 | Vite | Screw |
| 05.30 | Vite | Screw |
| 07.25 | Chiave esagonale | Hex. bar wrench |
| 07.30 | Chiave esagonale | Hex. bar wrench |
| 07.40 | Chiave esagonale | Hex. bar wrench |
| 09.02 | Anello elastico | Elastic ring |
| 09.18 | Anello elastico | Elastic ring |
| 13.16.1 | Spina | Pin |
| 13.22.2 | Spina | Pin |
| 17.28 | Tappo | Inlet cap |
| 17.30.5 | Raccordo | Air plug |
| 21.44 | Corpo | Body |
| 22.42 | Testa | Head |
| 25.40 | Deflettore | Exhaust deflector |
| 25.41 | Silenziatore | Silencer |
| 25.42 | Supporto | Support |
| 25.42-3 | Distanziale | Spacer |
| 26.42 | Cilindro | Cylinder |
| 28.40 | Guarnizione testa | Head gasket |
| 32.42 | Ammortizzatore | Bumper |
| 39.40 | Guarnizione scarico | Exhaust seal |
| 40.41 | Valvola completa | Valve ass'y |
| 43.11 | Rondella | Washer |
| 44.40 | Guarnizione | Gasket |
| 45.40 | Anello valvola | Ring |
| 50.25.1 | Comando a distanza | Remote control |
| 50.41 | Pulsante completo | Trigger valve ass'y |
| 51.41 | Boccola pulsante | Trigger valve housing |
| 53.41 | Pistone servovalvola | Valve piston |
| 55.41 | Raccordo pulsante | Bush |
| 64.41 | Carter | Hold down |
| 64.43 | Carter | Hold down |
| 74.40 | Staffa testina | Nose guide |
| 76.05 | Perno | Pin |
| 77.24 | Guida | Guide |
| 77.43 | Guida testina | Safety nose plate |
| 80.42 | Grilletto testina | Nose plate lock |
| 81.26 | Pistoncino | Piston |
| 86.58 | Carrucola | Pulley |
| 90.40 | Molla | Spring |
| 91.73 | Molla | Spring |
| 92.01X | Molla | Spring |
| 93.72 | Molla | Spring |
| 94.40 | Molla | Spring |
| 23.40.91 | Battente | Driver |
| 53.45.91 | Caricatore | Magazine |
| 72.45.91 | Spingipunto | Pusher |
| 83.40.91 | Controtestina | Nose |
| 93.45.90 | Testina | Nose plate |
| D01 | Bocchetta olio | Oiler |

SX.38 CLD3-3

cod. 14270B4530D-3

Guarnizioni - O-Rings - Dichtungen - Joints toriques - Juntas - Δακτύλιος στεγανοποίησης - Vedantes - O-ringen - Contalar



Indice di modifica
Upgrade number

2