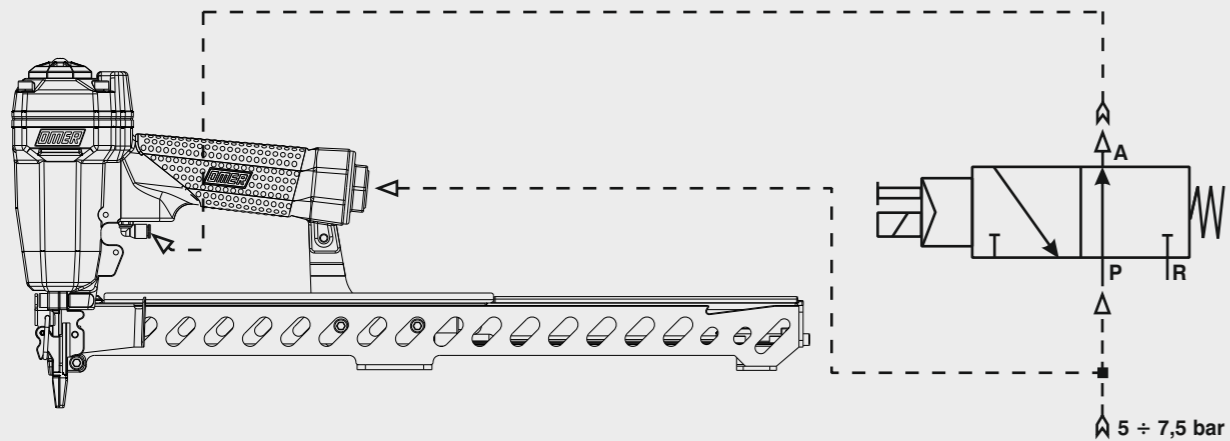


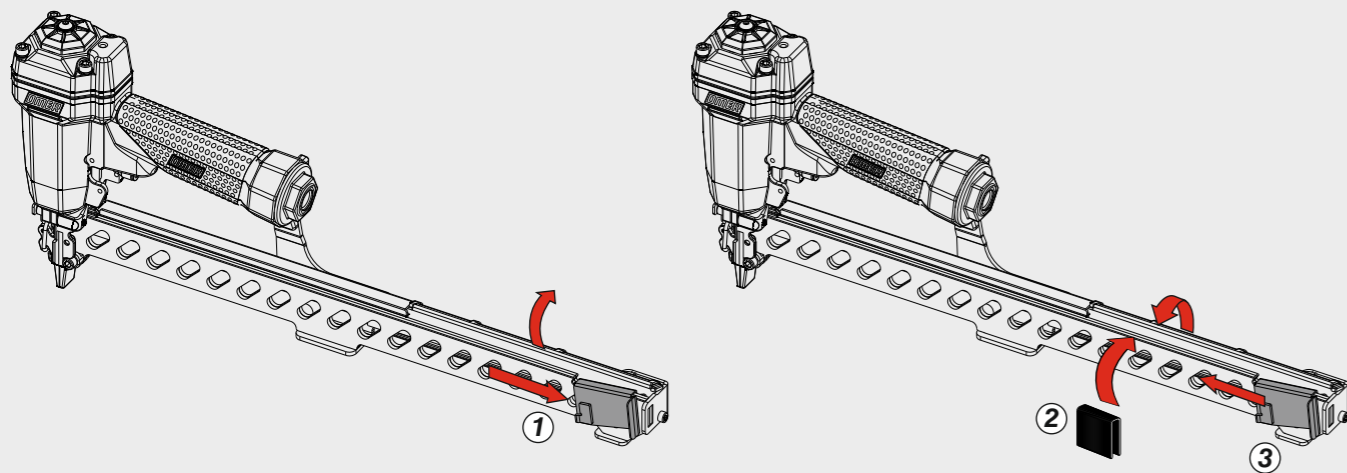
## Schema di collegamento - Connecting diagram

**Collegamento per valvola 3/2 NC**  
Connection for valve 3/2 NC

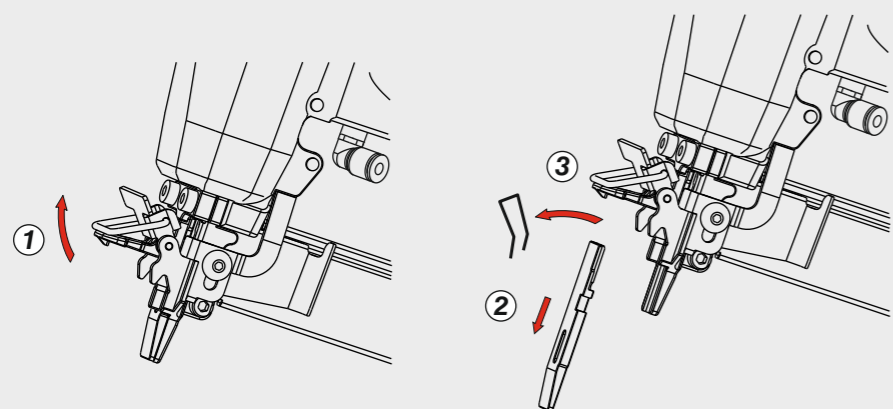


Caricamento - Loading - Laden - Chargement - Carga - Γέμισμα - Carregamento - Laden - Yükleme

**Caricamento da sopra**  
Top load magazine



Disincerramento - Jam clearing - Staubeseitigung - Décoincement - Desatascamiento - Απεμπλοκή  
Desencravamento - Deblokkering bij vastlopen - Sıkışma giderme



# OMER

<b>Manuale d'uso, manutenzione e parti di ricambio</b>	<b>Parte 2</b>
<b>Manual for use, maintenance and spare parts</b>	<b>Part 2</b>
<b>Bedienungs- und Wartungshandbuch sowie Ersatzteilleiste</b>	<b>Teil 2</b>
<b>Mode d'emploi, de maintenance et pièces de rechange</b>	<b>Partie 2</b>
<b>Manual de uso, mantenimiento y recambios</b>	<b>Part 2</b>
<b>Εγχειρίδιο χρήσης, συντήρησης και ανταλλακτικών</b>	<b>Μέρος 2</b>
<b>Manual de uso, manutenção e peças sobresselentes</b>	<b>Parte 2</b>
<b>Handleiding voor gebruik, onderhoud en wisselstukken</b>	<b>Deel 2</b>
<b>Kullanım, bakım ve yedek parça kılavuzu</b>	<b>Kısım 2</b>



## SG44.32 CLD3

cod. 14278530D

### Dati tecnici

Technical data  
Technische Daten

### Caractéristiques techniques

Datos técnicos  
Τεχνικά χαρακτηριστικά

### Dados técnicos

Technische gegevens  
Teknik veriler

### Misure impiegabili mm

Lengths mm  
Verwendbare Nagellänge mm

Dimensions utiles mm

Medidas de longitud mm  
Μήκος Αναλωσίμου - mm

Medidas utilizáveis mm

Toepasbare afmetingen mm  
Boy mm

**15 ÷ 32**

### Capacità caricatore n° punti

Magazine capacity  
Magazinkapazität Nägel

Capacité chargeur n° de points

Capacidad cargador n° puntos  
Δωνατοτητα γεμιστερα

Capacidade carregador n° pontos

Capaciteit magazijn in aantal spijkers  
Dergi kapasitesi

**300**

### Pressione d'esercizio

Operating pressure  
Betriebsdruck

Pression d'exercice

Presión de servicio  
Πίεση λειτουργίας

Pressão de serviço

Werkdruk  
Çalışma basıncı

**5 ÷ 7,5 bar  
70 ÷ 105 psi**

### Consumo aria litri/colpo

Air consumption litres/stroke  
Luftverbrauch Liter/Schuss

Consommation d'air litres/coup

Consumo aire litros/golpe  
Κατανάλωση αέρα - λίτρα/βολή

Consumo ar litros/disparo

Luchtverbruik liter/slag  
Litre/vuruş hava tüketimi

**0,45**

### Peso kg

Weight kg  
Gewicht kg

Poids kg

Peso kg  
Βάρος - kg

Peso kg

Gewicht in kg  
Ağırlık kg

**1,82**

### Dimensioni mm

Dimensions mm  
Abmessungen mm

Dimensions mm

Dimensiones mm  
Διαστάσεις mm

Dimensões mm

Afmetingen mm  
Boyutlar mm

**480x58x210**

(LxWxH)

### UNI EN 12549 :2009

### UNI EN ISO 3746 :2011

### UNI EN ISO 4871 :2009

### Potenza sonora emessa

Sound power emitted  
Emittierte Schalleistung

Puissance sonore émise

Potencia sonora emitida  
Εκπεμπόμενη ηχητική ισχύς

Potência sonora emitida

Geëmitteerd geluidsvermogen  
Çıkan ses gücü (ses desibeli)

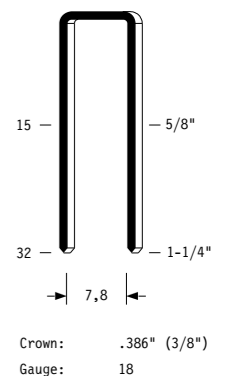
**93 dB(A)**

(K = 4 dB)

**Tipo di punto**  
Type of fastener  
Befestigungsmittel  
Type de rivet  
Tipo de punto  
Τύπος αναλωσίμου  
Tipo de agrafa  
Type nietjes  
Zimba ve çivi tipleri

**SG44**

1,00x1,25



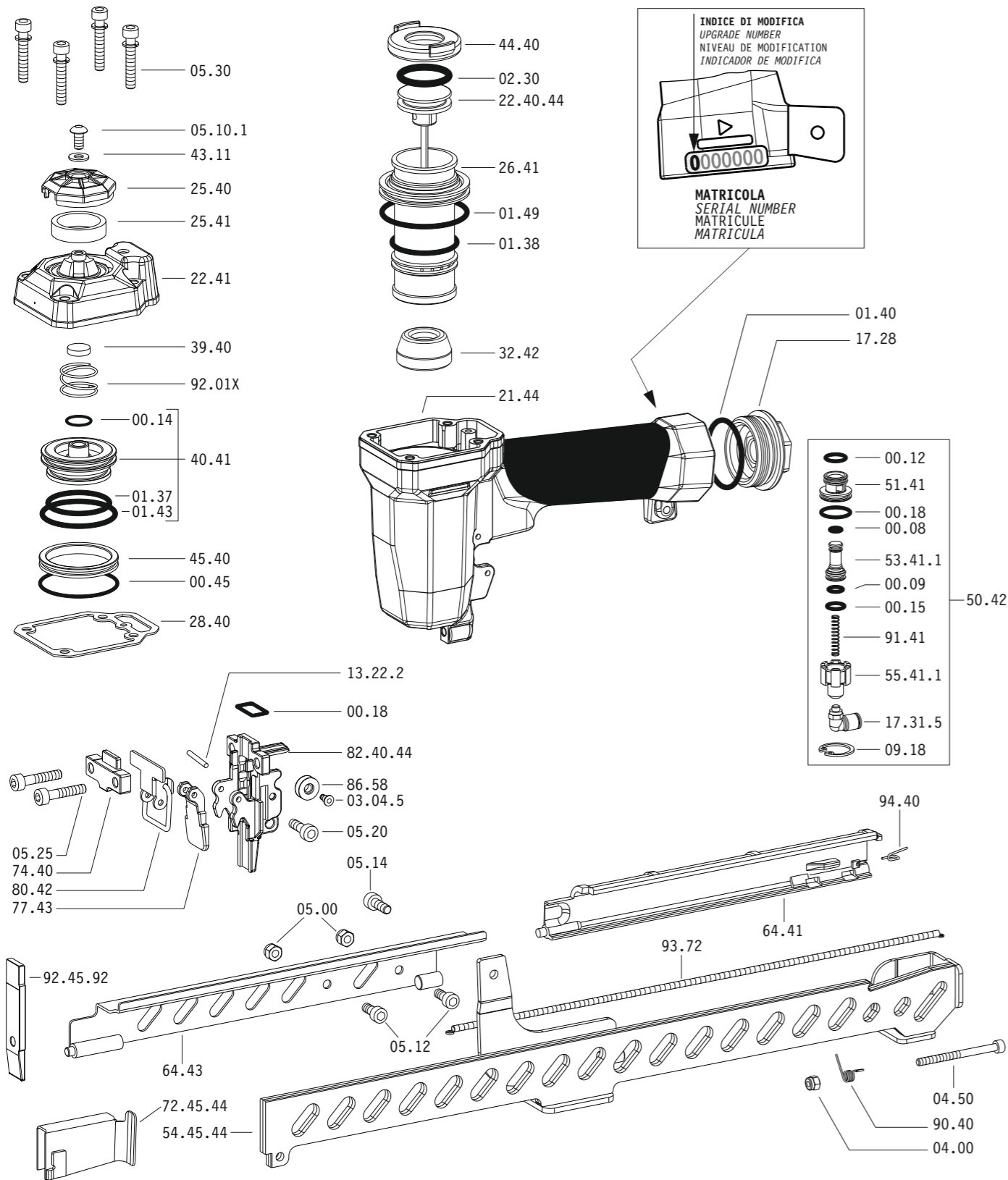
Crown: .386" (3/8")  
Gauge: 18

14278530D\_SG4432CLD3\_2\_rev20\_15/09/2022 DV

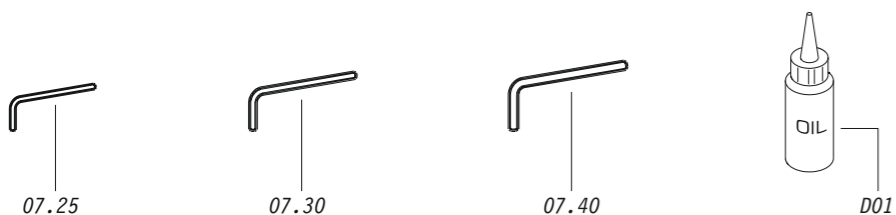
**DO NOT  
HANDHELD  
THIS TOOL**



Parti di ricambio - Spare parts - Ersatzteile - Pièces de rechange - Recambios  
Ανταλλακτικά - Partes sobresselentes - Wisselstukken - Yedek parçalar



Dotazioni - Equipment - Ausstattung - Outillage - Dotaciones - Εξοπλισμός  
Dotações - Uitrusting - Donanımlar



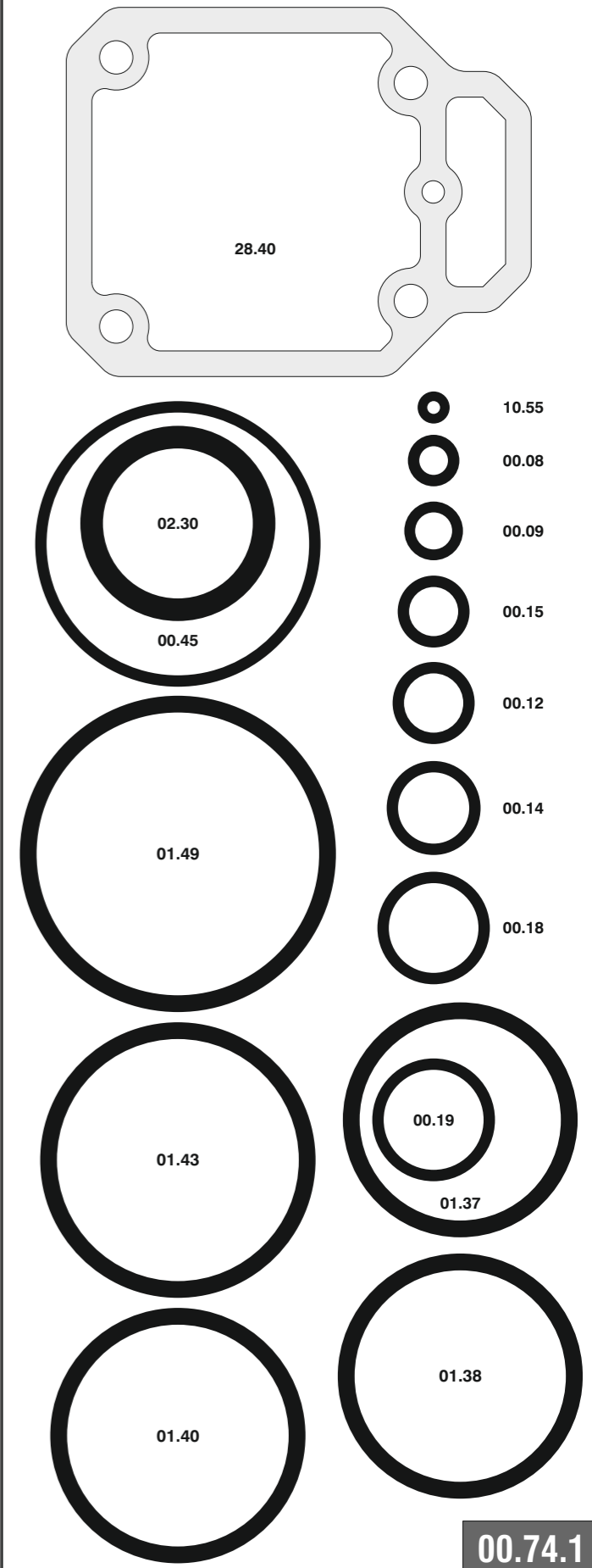
**SG44.32 CLD3**

cod. 14278530D

Parti di ricambio - Spare parts - Ersatzteile - Pièces de rechange - Recambios  
Ανταλλακτικά - Partes sobresselentes - Wisselstukken - Yedek parçalar

Cod.	Descrizione	Description
00.08	O-Ring	O-Ring
00.09	O-Ring	O-Ring
00.12	O-Ring	O-Ring
00.14	O-Ring	O-Ring
00.15	O-Ring	O-Ring
00.18	O-Ring	O-Ring
00.45	O-Ring	O-Ring
01.37	O-Ring	O-Ring
01.38	O-Ring	O-Ring
01.40	O-Ring	O-Ring
01.43	O-Ring	O-Ring
01.49	O-Ring	O-Ring
02.30	O-Ring	O-Ring
03.04.5	Vite	Screw
04.00	Dado	Nut
04.50	Vite	Screw
05.00	Dado	Nut
05.10.1	Vite	Screw
05.12	Vite	Screw
05.14	Vite	Screw
05.20	Vite	Screw
05.25	Vite	Screw
05.30	Vite	Screw
07.25	Chiave esagonale	Hex. bar wrench
07.30	Chiave esagonale	Hex. bar wrench
07.40	Chiave esagonale	Hex. bar wrench
09.18	Anello elastico	Elastic ring
13.22.2	Spina	Pin
17.28	Tappo	Inlet cap
17.31.5	Raccordo	Air plug
21.44	Corpo	Body
22.41	Testa	Head
25.40	Deflettore	Exhaust deflector
25.41	Silenziatore	Silencer
25.42	Supporto	Support
25.42-3	Distanziale	Spacer
26.41	Cilindro	Cylinder
28.40	Guarnizione testa	Head gasket
32.42	Ammortizzatore	Bumper
39.40	Guarnizione scarico	Exhaust seal
40.41	Valvola completa	Valve ass'y
43.11	Rondella	Washer
44.40	Guarnizione	Gasket
45.40	Anello valvola	Ring
50.42	Pulsante completo	Trigger valve ass'y
51.41	Boccola pulsante	Trigger valve housing
53.41.1	Pistone servovalvola	Valve piston
55.41.1	Raccordo pulsante	Bush
64.41	Carter	Hold down
64.43	Carter	Hold down
74.40	Staffa testina	Nose guide
77.43	Guida testina	Safety nose plate
80.42	Grilletto testina	Nose plate lock
86.58	Carrucola	Pulley
90.40	Molla	Spring
91.41	Molla	Spring
92.01X	Molla	Spring
93.72	Molla	Spring
94.40	Molla	Spring
22.40.44	Battente	Driver
54.45.44	Caricatore	Magazine
72.45.44	Spingipunto	Pusher
82.40.44	Controtestina	Nose
92.45.92	Testina	Nose plate
D01	Bocchetta olio	Oiler

Guarnizioni - O-Rings - Dichtungen - Joints toriques - Junta - Δακτύλιος στεγανοποίησης - Vedantes - O-ringen - Contalar



**SG44.32 CLD3**

cod. 14278530D

Indice di modifica  
Upgrade number

**2**