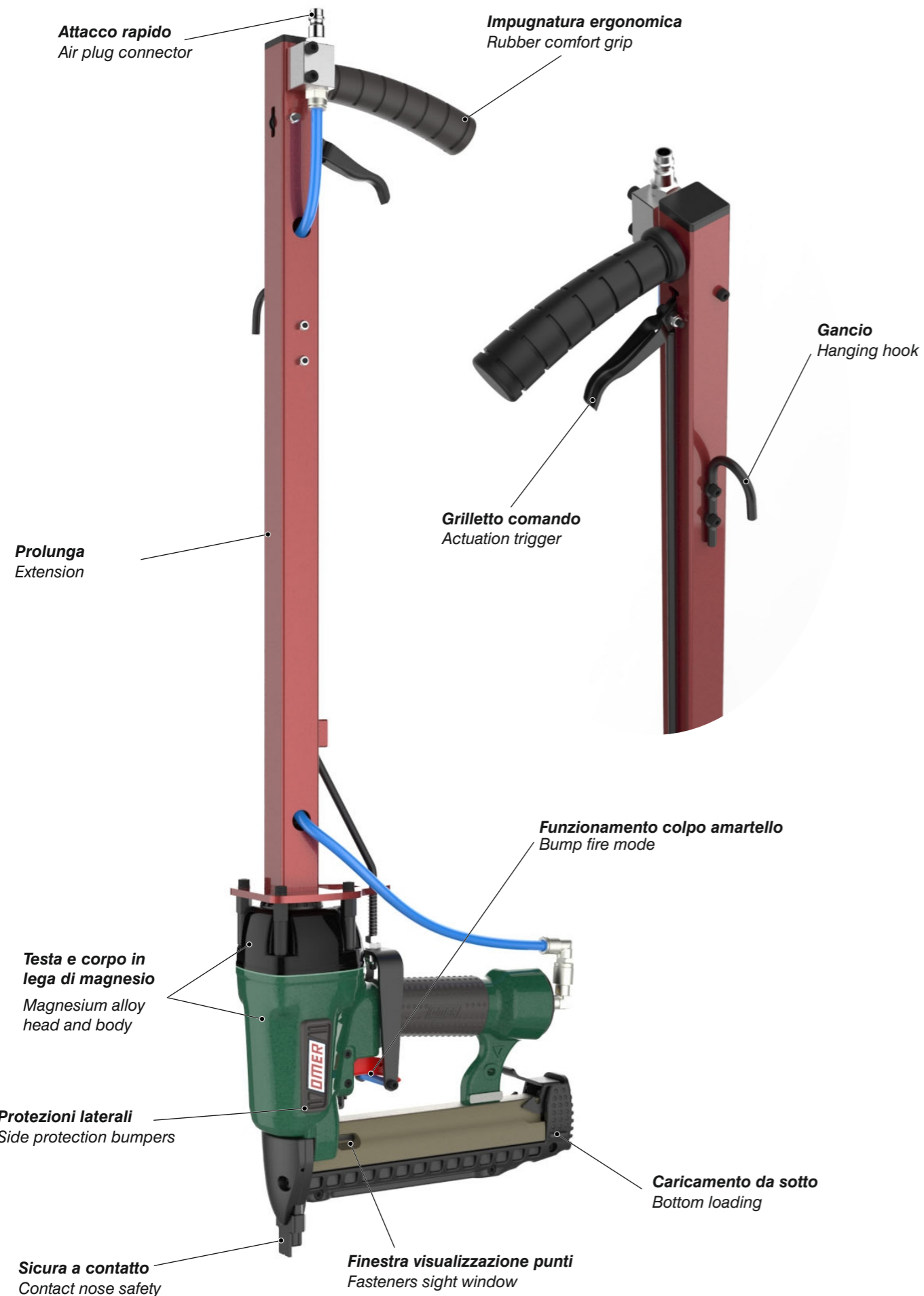
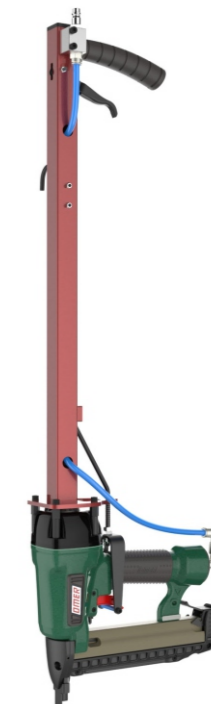
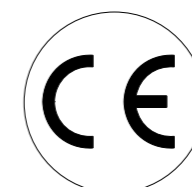


## Caratteristiche - Features



|   |                            |
|---|----------------------------|
| <b>Manuale d'uso, manutenzione e parti di ricambio</b>                | <b>Parte 2</b>             |
| <b>Use, maintenance and spare parts manual</b>                        | <b>Part 2</b>              |
| <b>Gebrauchsanweisung, Instandhaltungsrichtlinien und Ersatzteile</b> | <b>Teil 2</b>              |
| <b>Manuel d'utilisation, entretien et pièces de rechange</b>          | <b>Partie 2</b>            |
| <b>Manual de uso, mantenimiento y repuestos</b>                       | <b>Part 2</b>              |
| <b>Εγχειρίδιο χρήσης, συντήρησης και ανταλλακτικών</b>                | <b>2<sup>ο</sup> Μέρος</b> |
| <b>Manual de utilização, manutenção e partes sobresselentes</b>       | <b>Parte 2</b>             |
| <b>Handleiding voor gebruik, onderhoud en reservedelslste</b>         | <b>Deel 2</b>              |
| <b>Brugsanvisning, vedligeholdelse og reservedelslste</b>             | <b>Del 2</b>               |

1747200CP\_92740CP\_4 180316 IV



# 92.740 CP

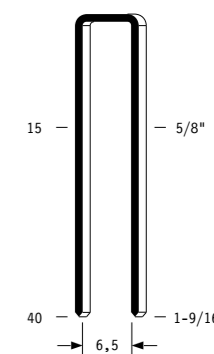
cod. 1747200CP

| Dati tecnici<br>Technical data<br>Technische daten  | Données techniques<br>Datos tècnicos<br>Τεχνικά χαρακτηριστικά  | Dados tècnicos<br>Technischegegevens<br>Tekniske data   |
|---|---|---|
| <b>Misure impieghiabili mm</b><br>Usable lengths mm<br>Gebrauchliche Längen mm                      | Mesures utilisables mm<br>Medidas que se pueden emplear mm<br>Διαστάσεις σε μμ  | Medidas que se podem utilizar mm<br>Te gebruiken engtes in mm<br>Brugbare laengder i mm                               |
| <b>Capacità caricatore n° punti</b><br>Magazine capacity No. of fasteners<br>Magazinkapazität Nägel | Capacité chargeur n° de points<br>Capacidad cargador n° puntos<br>Δυνατότητα γεμιστέρα, σπινδότερες   | Capacidade carregador n° pontos<br>Capaciteit magazijn in aantal spijkers<br>Kapacitet af magasin antal klemme        |
| <b>Pressione d'esercizio</b><br>Working pressure<br>Betriebsdruck                                   | Pression de fonctionnement<br>Presión de trabajo<br>Πίεση λειτουργίας ατμ.  | Pressao de trabalho<br>Werkdruk<br>Arbejds tryk bar   |
| <b>Consumo aria litri/colpo</b><br>Air consumption litres/shot<br>Luftverbrauch Liter/Schlag        | Consommation air litre/coup<br>Consumo aire-litros/golpe<br>Καταναλοση αερα λ/ξτῶπημα   | Consumo ar litro/golpe<br>Luchtverbruik liter/schot<br>Luftforbrug liter/skud   |
| <b>Peso kg</b><br>Weight kg<br>Gewicht kg   | Poids kg<br>Peso kg<br>Βαρος κγ   | Peso kg<br>Gewicht in kg<br>Vaegt kg  |
| <b>Dimensioni (AxBxH) mm</b><br>Dimensions mm<br>Größe mm   | Dimension mm<br>Dimensiones mm<br>Δυνατότητα γεμιστέρα, σπινδότερες   | Dimencoes mm<br>Afmetingen in mm<br>Dimensioner mm  |
| <b>EN 12549 :1999 ISO 11201 :1995</b>   | <b>Pressione sonora in pos. operatore</b><br>Sound pressure at the workstation<br>Lärmintensität am Arbeitsplatz  | Pression acoustique près de l'opérateur<br>Presión sonora en posición encargado<br>Ακουστική πίεση στη θέση χειριστού |
| <b>EN 12549 :1999 ISO 3744 :1994</b>  | <b>Potenza sonora emessa</b><br>Emitted sound power<br>Ausgestrahlte Lärmintensität   | Intensidade sonora perto do operador<br>Geluidssterkte op de werkplek<br>Lydstyrke på operatorposten                  |
| <b>EN 28662 :1992 ISO 5349 :1986 ISO 8662 -11</b>   | <b>Valore medio ponderato di vibrazione sull'impugnatura</b><br>Weighted mean value of vibration on the grip<br>Mittlerer Vibrationswert, am Griff Gemessen | Potência sonora emitida<br>Uitgestraalde geluidssterkte<br>Udsendt lydstryke  |
|   | <b>Valore medio ponderato di vibrazione</b><br>Weighted mean value of vibration on the grip<br>Mittlerer Vibrationswert, am Griff Gemessen                  | Valor medio ponderado de vibracao medida no punho<br>Gewogen gemiddelde vibratiewaarde                                |

Tipo di punto  
Type of fastener  
Befestigungselement  
Type d'agrafe  
Tipo de punto  
Τυπος κῶρφιου  
Tipo de ponto  
Type nietjes  
Tilspændingstype

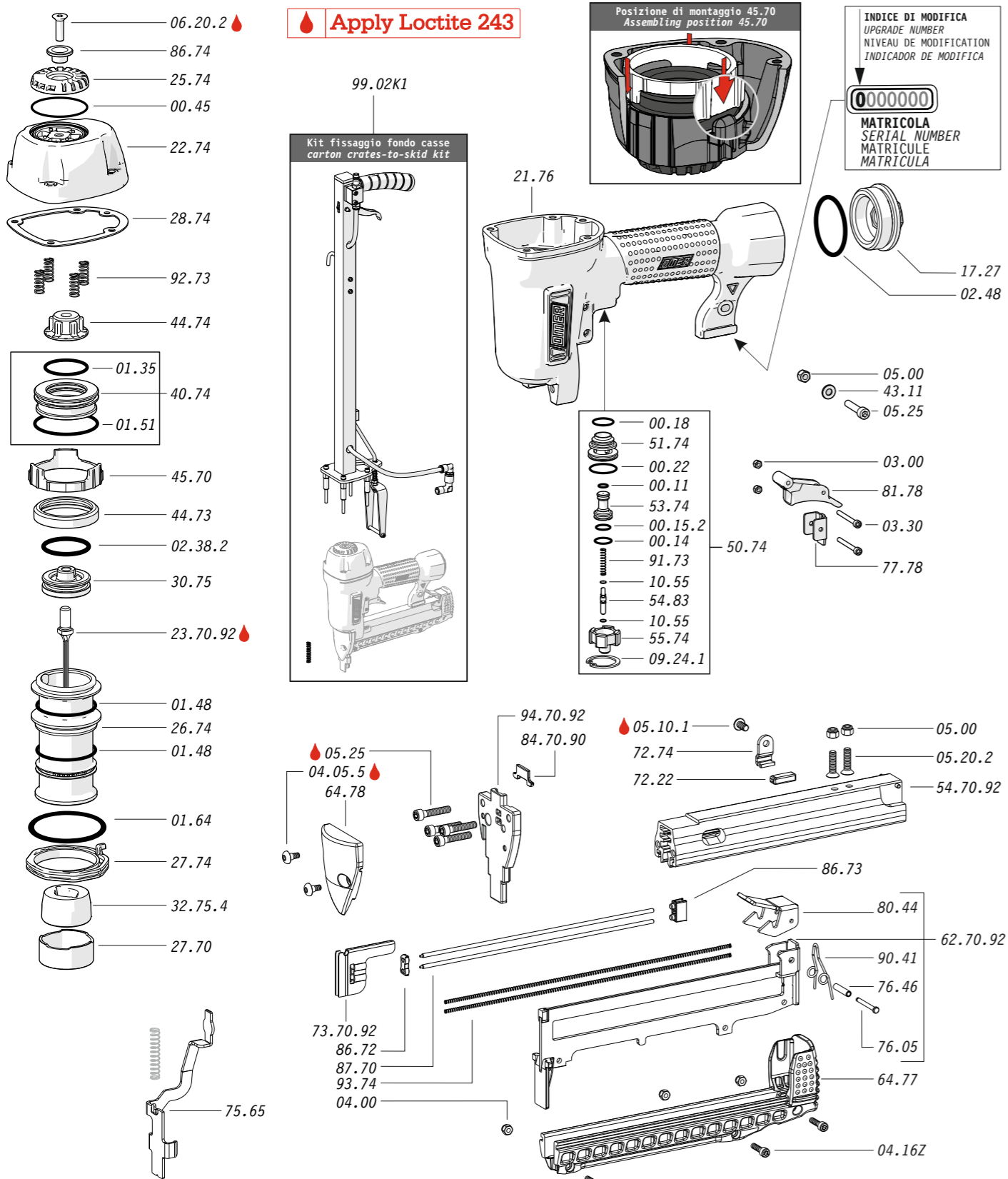
92

1,00x1,25

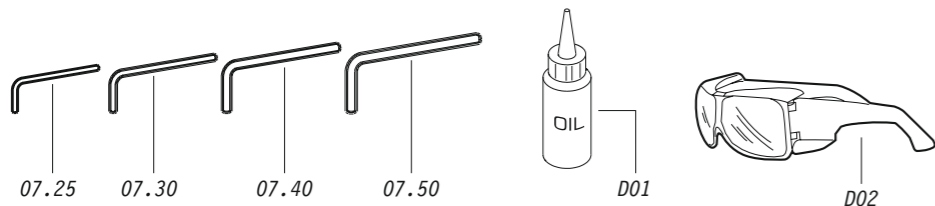


Crown: .330" (5/16")  
Gauge: 18

Parti di ricambio - Spare parts - Ersatzteile - Pièces de rechange - Piezas de repuesto  
 Ανταλλακτικά - Partes sobresselentes - Tabel te raadplegen - Reservedede



Dotazioni - Equipment - Ausrüstung - Équipements - Equipamiento - Παρεχόμενα  
 Equipamento - Uitrusting - Udstyr



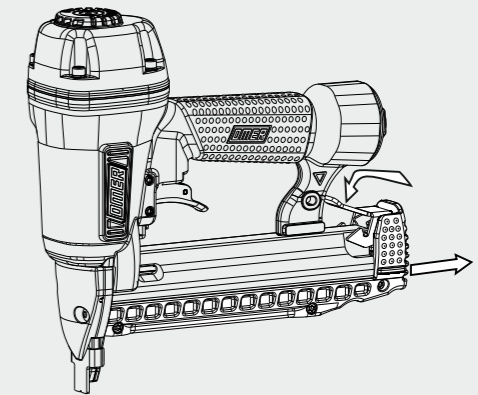
**92.740 CP**

cod. 1747200CP

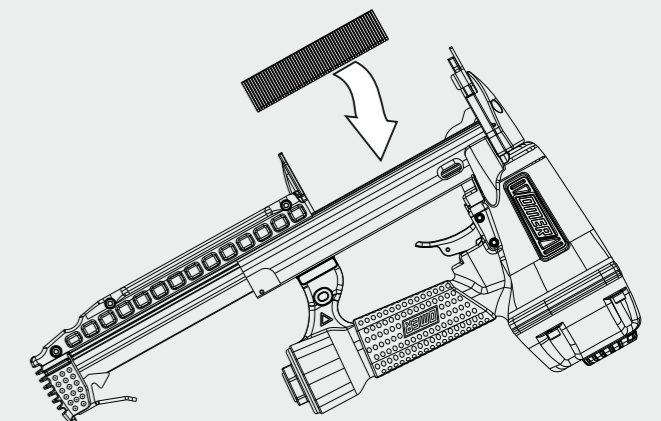
Caricamento - Loading

**Non azionare MAI il grilletto comando o la sicura a contatto durante il caricamento. NEVER pull the trigger or the contact safety while loading magazine.**

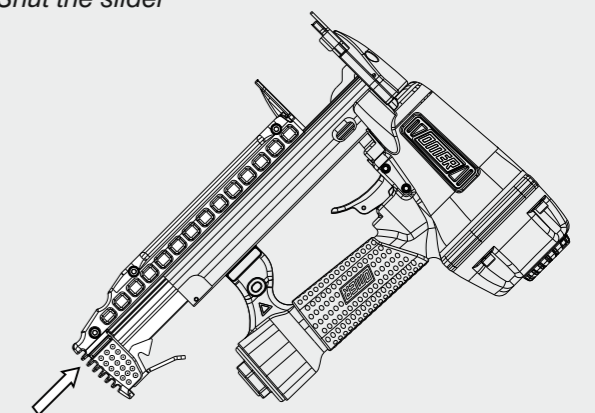
**1- Premere il grilletto chiusura e arretrare il carrello**  
 Press the magazine latch and pull the slider backwards



**2- Capovolgere la graffiata ed inserire i punti**  
 Turn the tool up side down and load fasteners

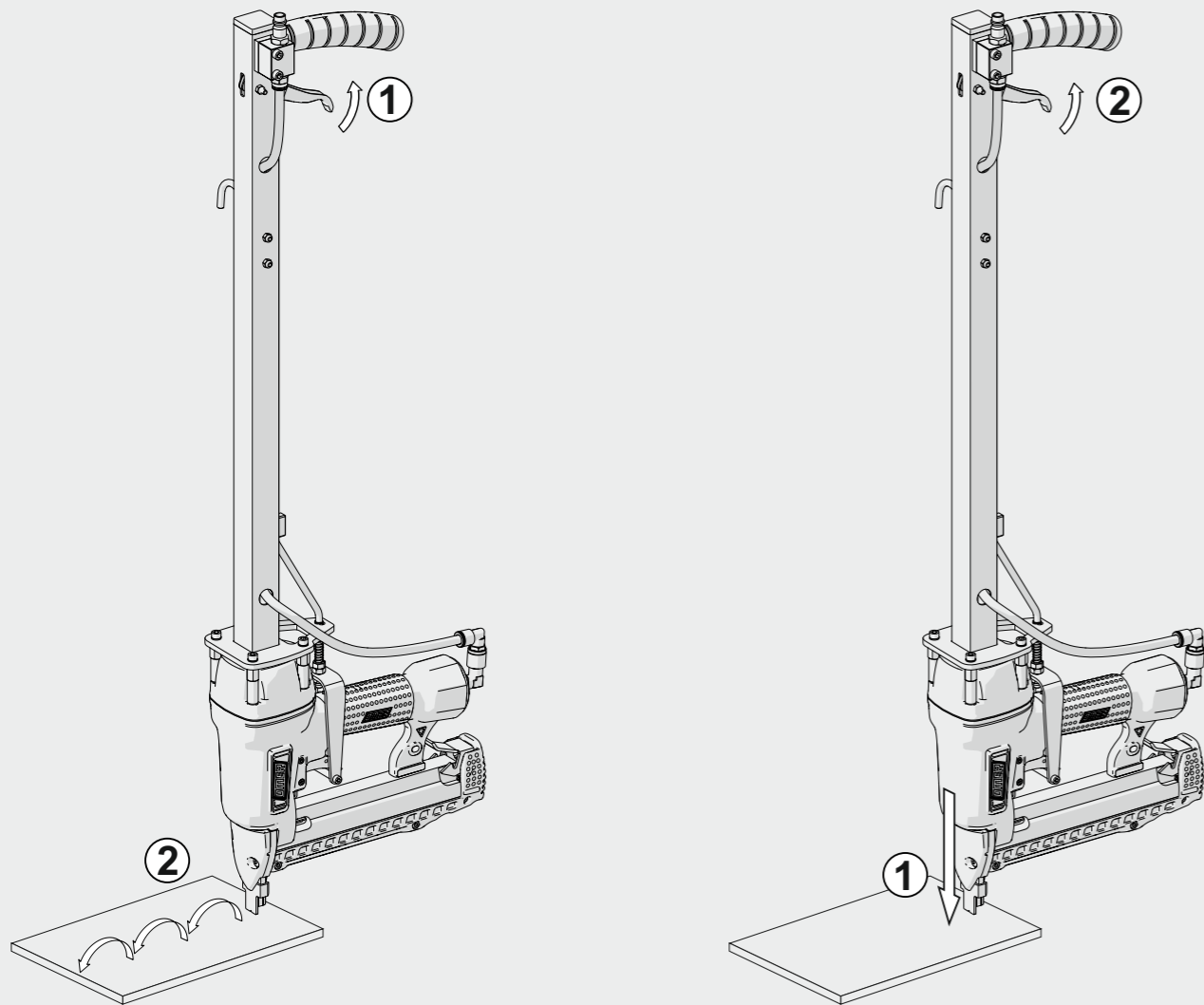


**3- Richiudere il carrello**  
 Shut the slider



## Funzionamento - Operating mode

### Sparo a martello - Bump fire



**1- Premere il grilletto e mantenerlo premuto.**  
Press and keep holding the trigger.

**2- Premere la sicura sul materiale da fissare per sparare.**  
Press the safety against the material to be fastened to fire.

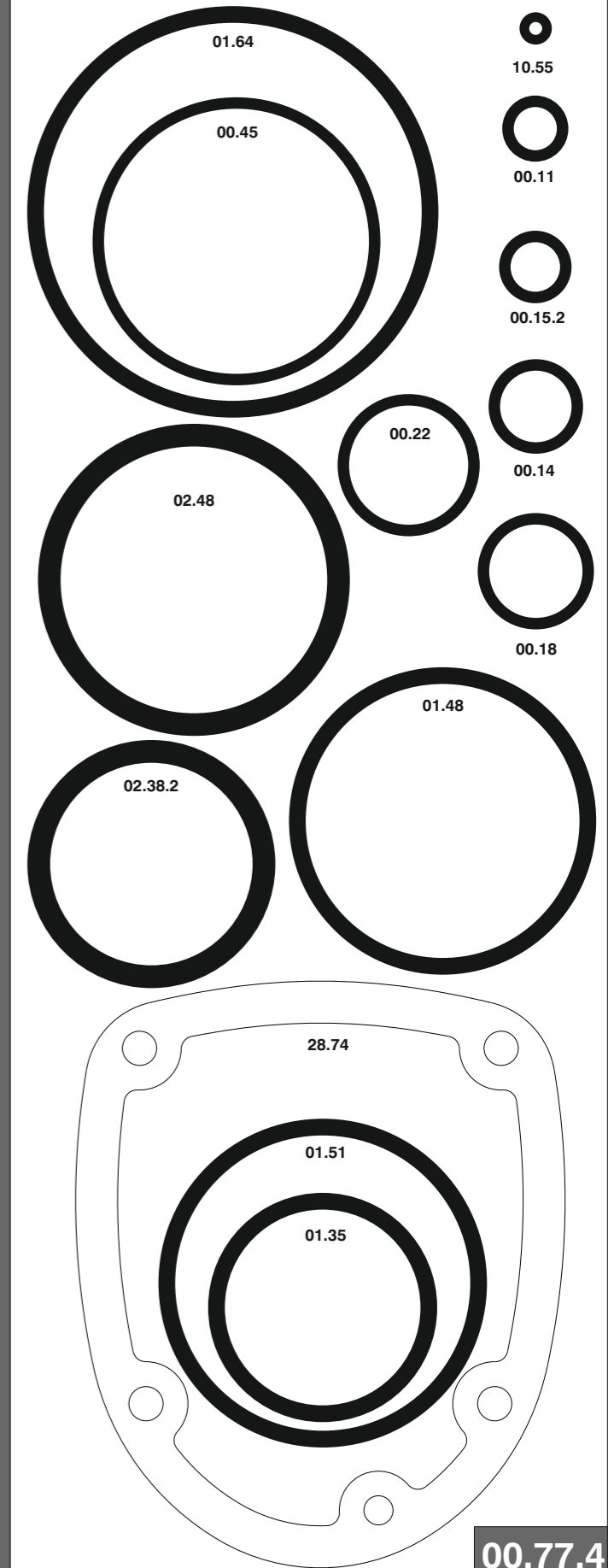
**1- Premere la sicura sul materiale da fissare.**  
Press the safety against the material to be fastened.

**2- Premere il grilletto per sparare.**  
Press the trigger to fire.

## Parti di ricambio - Spare parts - Ersatzteile - Pièces de rechange - Piezas de repuesto Ανταλλακτικά - Partes sobresselentes - Tabel te raadplegen - Reservedele

| Cod.     | Descrizione          | Description         |
|----------|----------------------|---------------------|
| 00.11    | O-Ring               | O-Ring              |
| 00.14    | O-Ring               | O-Ring              |
| 00.15.2  | O-Ring               | O-Ring              |
| 00.18    | O-Ring               | O-Ring              |
| 00.22    | O-Ring               | O-Ring              |
| 00.45    | O-Ring               | O-Ring              |
| 01.35    | O-Ring               | O-Ring              |
| 01.48    | O-Ring               | O-Ring              |
| 01.51    | O-Ring               | O-Ring              |
| 01.64    | O-Ring               | O-Ring              |
| 02.38.2  | O-Ring               | O-Ring              |
| 02.48    | O-Ring               | O-Ring              |
| 03.00    | Dado                 | Nut                 |
| 03.30    | Dado                 | Nut                 |
| 04.00    | Dado                 | Nut                 |
| 04.05.5  | Vite                 | Screw               |
| 04.16Z   | Vite                 | Screw               |
| 05.00    | Dado                 | Nut                 |
| 05.10.1  | Vite                 | Screw               |
| 05.20.2  | Vite                 | Screw               |
| 05.25    | Vite                 | Screw               |
| 06.20.2  | Vite                 | Screw               |
| 07.25    | Chiave esagonale     | Hex. bar wrench     |
| 07.30    | Chiave esagonale     | Hex. bar wrench     |
| 07.40    | Chiave esagonale     | Hex. bar wrench     |
| 07.50    | Chiave esagonale     | Hex. bar wrench     |
| 09.24.1  | Anello elastico      | Elastic ring        |
| 10.55    | O-Ring               | O-Ring              |
| 17.27    | Tappo                | Inlet cap           |
| 21.75    | Corpo                | Body                |
| 22.74    | Testa                | Head                |
| 25.74    | Deflettore scarico   | Exhaust deflector   |
| 26.74    | Cilindro             | Cylinder            |
| 27.70    | Anello               | Ring                |
| 27.74    | Anello cilindro      | Cylinder ring       |
| 28.74    | Guarnizione testa    | Head gasket         |
| 30.75    | Pistone              | Piston              |
| 32.75.4  | Ammortizzatore       | Bumper              |
| 40.74    | Valvola completa     | Valve assembled     |
| 44.73    | Guarnizione cilindro | Cylinder gasket     |
| 44.74    | Ammortizzatore sup.  | Upper bumper        |
| 45.70    | Distanziale          | Spacer              |
| 50.74    | Pulsante completo    | Trigger valve assy  |
| 51.74    | Boccola servovalvola | Servo valve bushing |
| 53.74    | Pistone servovalvola | Servo valve piston  |
| 54.83    | Pulsante             | Trigger valve       |
| 55.74    | Raccordo pulsante    | Trigger valve bush  |
| 64.77    | Guida carrello       | Slider guide        |
| 64.78    | Carter sicura        | Safety guard        |
| 72.22    | Fermo carrello       | Slider stop         |
| 72.74    | Fermo di gomma       | Rubber stop         |
| 75.65    | Sicura               | Safety              |
| 76.05    | Perno                | Pin                 |
| 76.46    | Perno molla          | Spring pin          |
| 77.78    | Guida sicura         | Safety guide        |
| 80.44    | Grilletto chiusura   | Trigger             |
| 81.78    | Grilletto comando BF | BF Trigger          |
| 86.72    | Guida spingipunto    | Pusher guide        |
| 86.73    | Guida perni          | Pin guide           |
| 86.74    | Boccola              | Bushing             |
| 87.70    | Perno porta molla    | Spring guide pin    |
| 90.41    | Molla                | Spring              |
| 91.73    | Molla                | Spring              |
| 92.73    | Molla                | Spring              |
| 93.74    | Molla                | Spring              |
| 23.70.92 | Battente             | Driver              |
| 54.70.92 | Caricatore           | Magazine            |
| 62.70.92 | Carrello             | Slider              |
| 73.70.92 | Spingipunto          | Pusher              |
| 84.70.90 | Controtestina        | Nose                |
| 94.70.92 | Testina              | Nose plate          |
| D01      | Bocchetta olio       | Oiler               |
| D02      | Occhiali protettivi  | Protective goggles  |

Guarnizioni - O-Rings - Dichtungen - Joints - Kit O-Rings - Ασπυγκκίαι - Kit O-Rings - O-ringens - Pakninger



1747200CP\_92740CP\_4\_180316\_IV

# 92.740 CP

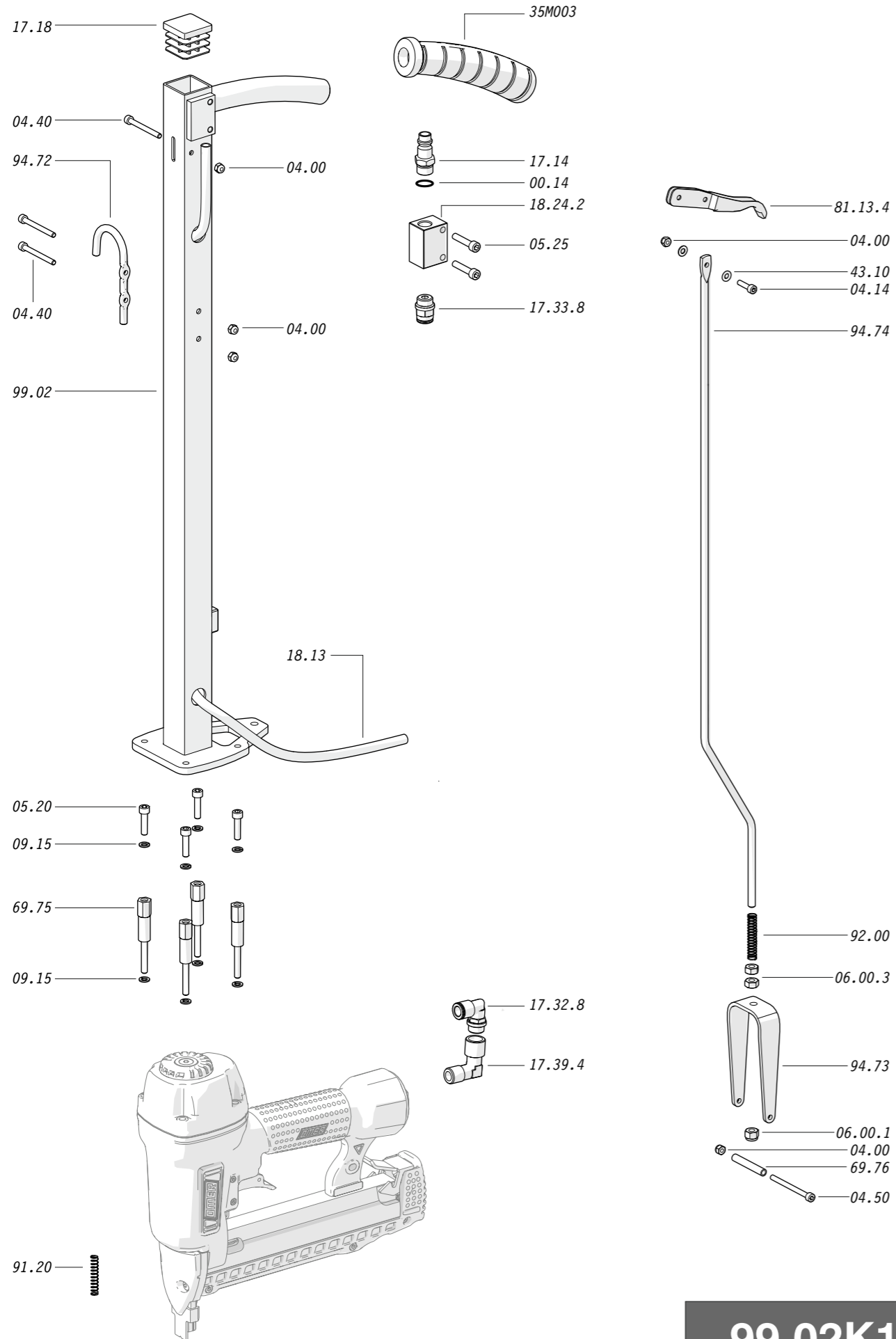
cod. 1747200CP

Indice di modifica  
Upgrade number

4

4400169

Parti di ricambio - Spare parts - Ersatzteile - Pièces de rechange - Piezas de repuesto  
Ανταλλακτικά - Partes sobresselentes - Tabel te raadplegen - Reservedele



99.02K1

Parti di ricambio - Spare parts - Ersatzteile - Pièces de rechange - Piezas de repuesto  
Ανταλλακτικά - Partes sobresselentes - Tabel te raadplegen - Reservedele

| Cod.    | Descrizione       | Description           |
|---------|-------------------|-----------------------|
| 00.14   | O-Ring            | O-Ring                |
| 04.00   | Vite              | Screw                 |
| 04.14   | Vite              | Screw                 |
| 04.40   | Vite              | Screw                 |
| 04.50   | Vite              | Screw                 |
| 05.20   | Vite              | Screw                 |
| 05.25   | Vite              | Screw                 |
| 06.00.1 | Dado              | Nut                   |
| 06.00.3 | Dado              | Nut                   |
| 09.15   | Rondella          | Washer                |
| 17.14   | Attacco rapido    | Air plug              |
| 17.18   | Tappo             | Inlet cap             |
| 17.32.8 | Raccordo "L"      | Connection "Elbow"    |
| 17.33.8 | Raccordo "D"      | Connection "Straight" |
| 17.39.4 | Raccordo "L"      | Connection "Elbow"    |
| 18.24.2 | Distributore      | Distributor           |
| 18.13   | Tube              | Tube                  |
| 43.10Z  | Rondella          | Washer                |
| 69.75   | Vite-distanziale  | Spacer-screw          |
| 69.76   | Distanziale       | Spacer                |
| 81.13.4 | Grilletto         | Trigger               |
| 91.20   | Molla             | Spring                |
| 92.00   | Molla             | Spring                |
| 94.72   | Gancio            | Hook                  |
| 94.73   | Forcella          | Fork                  |
| 94.74   | Tirante           | Rod                   |
| 99.02   | Prolunga          | Extension             |
| 35M003  | Impugnatura gomma | Rubber grip           |

Dati tecnici - Technical data

