

Caratteristiche - Features - Merkmale - Caractéristiques - Características - Χαρακτηριστικά - Características - Kenmerken - Özellikler



Manuale d'uso, manutenzione e parti di ricambio **Parte 2**
Manual for use, maintenance and spare parts **Part 2**
Bedienungs- und Wartungshandbuch sowie Ersatzteilleiste **Teil 2**
Mode d'emploi, de maintenance et pièces de rechange **Partie 2**
Manual de uso, mantenimiento y recambios **Part 2**
Εγχειρίδιο χρήσης, συντήρησης και ανταλλακτικών **Μέρος 2**
Manual de uso, manutenção e peças sobresselentes **Parte 2**
Handleiding voor gebruik, onderhoud en wisselstukken **Deel 2**
Kullanım, bakım ve yedek parça kılavuzu **Kısım 2**



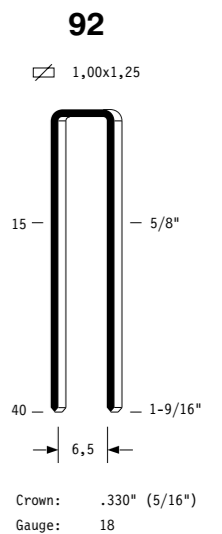
92.740 SQ

cod. 1747200SQ



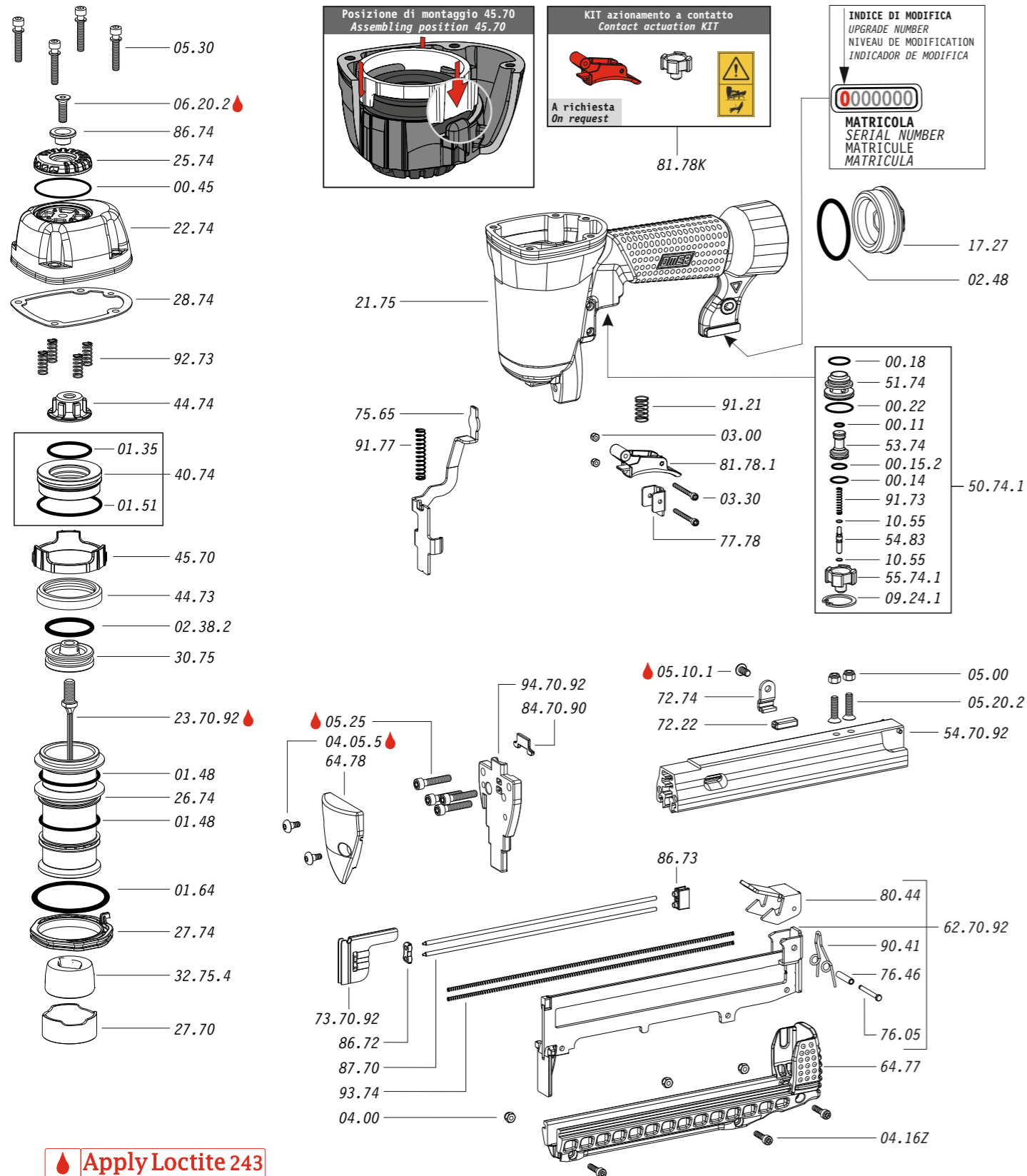
| Dati tecnici Technical data Technische Daten | Caractéristiques techniques Datos técnicos Τεχνικά χαρακτηριστικά | Dados técnicos Technische gegevens Teknik veriler |
|---|---|---|
| Misure impiegabili mm Lengths mm Verwendbare Nagellänge mm | Dimensions utiles mm Medidas de longitud mm Μήκος Αναλωσίμου - mm | Medidas utilizáveis mm Toepasbare afmetingen mm Boy mm |
| Capacità caricatore n° punti Magazine capacity Magazinkapazität Nägel | Capacité chargeur n° de points Capacidad cargador n° puntos Δωανατοτητα γεμιστερα | Capacidade carregador n° pontos Capaciteit magazijn in aantal spijkers Dergi kapasitesi |
| Pressione d'esercizio Operating pressure Betriebsdruck | Pression d'exercice Presión de servicio Πίεση λειτουργίας | Pressão de serviço Werkdruk Çalışma basıncı |
| Consumo aria litri/colpo Air consumption litres/stroke Luftverbrauch Liter/Schuss | Consumation d'air litres/coup Consumo aire litros/golpe Κατανάλωση αέρα - λίτρα/βολή | Consumo ar litros/disparo Luchtverbruik liter/slag Litre/vuruş hava tüketimi |
| Peso kg Weight kg Gewicht kg | Poids kg Peso kg Βάρος - kg | Peso kg Gewicht in kg Ağırlık kg |
| Dimensioni mm Dimensions mm Abmessungen mm | Dimensions mm Dimensiones mm Διαστάσεις mm | Dimensões mm Afmetingen mm Boyutlar mm |
| UNI EN 12549 :2009 UNI EN ISO 4871 :2009 | | |
| Pressione sonora in pos. operatore Sound pressure in operator's position Schalldruck am Arbeitsplatz | Pression sonore poste Opérateur Presión sonora en la pos. del operador Ηχητική πίεση στη θέση του Χειριστή | Pressão sonora na posição Operador Geluidsdruk op de werkplaats Operatör pozisyonunda ses basıncı |
| UNI EN 12549 :200 UNI EN ISO 3746 :2011 UNI EN ISO 4871 :2009 | | |
| Potenza sonora emessa Sound power emitted Emitierte Schallleistung | Puissance sonore émise Potencia sonora emitida Εκπεμπόμενη ηχητική ισχύς | Potência sonora emitida Geëmitteerd geluidsvermogen Çıkan ses gücü (ses desibel) |
| UNI CEN ISO/TS 8662-11 :2006 UNI EN ISO 5349-2 :2004 UNI EN 12096 :1999 | | |
| Emissione vibratoria sull'impugnatura Vibratory emissions on handle Vibrationsemission am Griff | Émission vibratoire sur la prise en main Emisión de vibraciones en la empuñadura Εκπεμπόμενες δονήσεις στη λαβή | Emissão vibratória na empunhadura Trillingsemissie op de handgreep Tutamak üzerinde vibrasyon emisyonları |

Tipo di punto
Type of fastener
Befestigungselement
Type d'agrafe
Tipo de punto
Τυπος καρφιου
Tipo de ponto
Type nietjes
Tilspændingstype



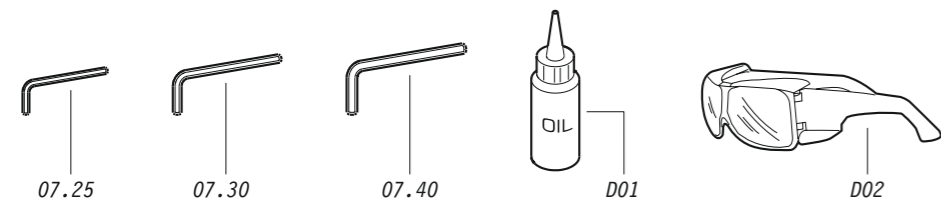
1747200SQ_92740SQ_4_rev20_09/03/2022_DV

Parti di ricambio - Spare parts - Ersatzteile - Pièces de rechange - Recambios
Ανταλλακτικά - Partes sobresselentes - Wisselstukken - Yedek parçalar



Apply Loctite 243

Dotazioni - Equipment - Ausstattung - Outillage - Dotaciones - Εξοπλισμός
Dotações - Uitrusting - Donanımlar



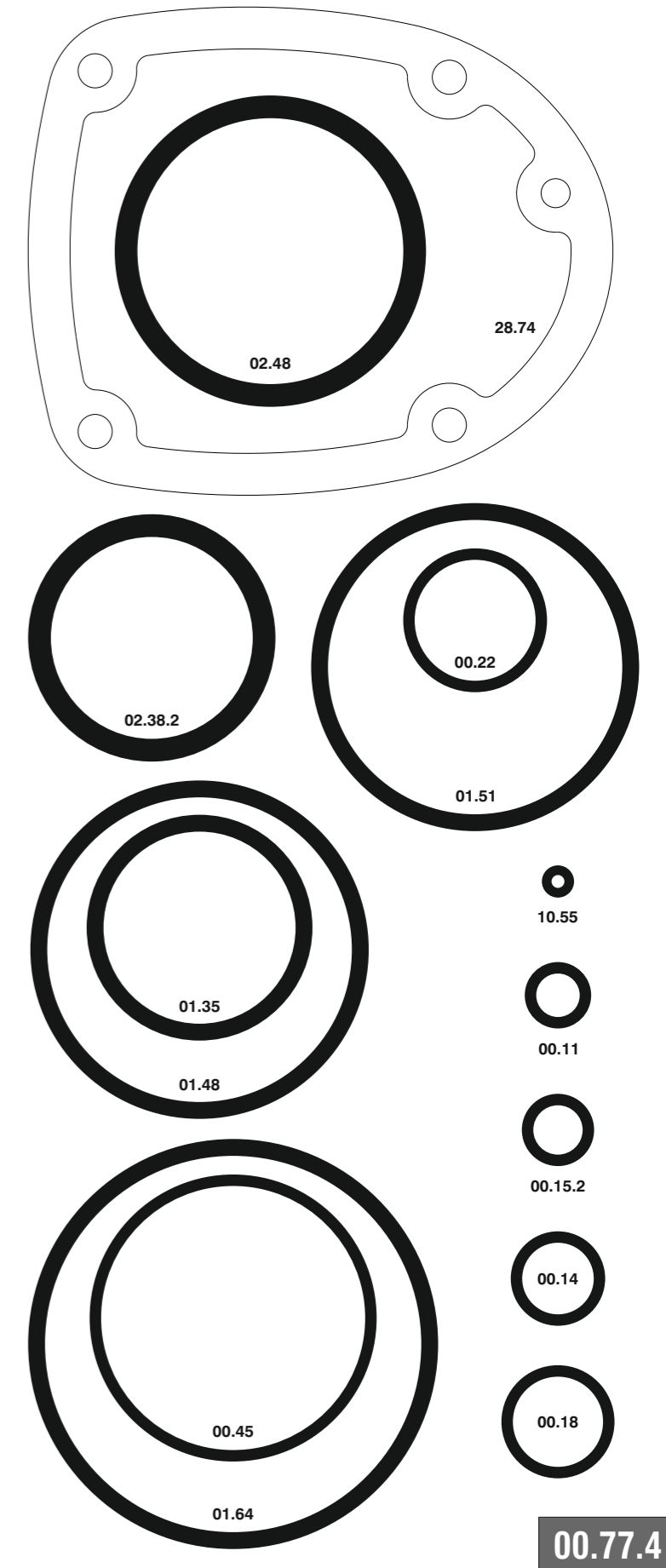
92.740 SQ

cod. 1747200SQ

Parti di ricambio - Spare parts - Ersatzteile - Pièces de rechange - Recambios
Ανταλλακτικά - Partes sobresselentes - Wisselstukken - Yedek parçalar

| Cod. | Descrizione | Description |
|----------|--------------------------|---------------------|
| 00.11 | O-Ring | O-Ring |
| 00.14 | O-Ring | O-Ring |
| 00.15.2 | O-Ring | O-Ring |
| 00.18 | O-Ring | O-Ring |
| 00.22 | O-Ring | O-Ring |
| 00.45 | O-Ring | O-Ring |
| 01.35 | O-Ring | O-Ring |
| 01.48 | O-Ring | O-Ring |
| 01.51 | O-Ring | O-Ring |
| 01.64 | O-Ring | O-Ring |
| 02.38.2 | O-Ring | O-Ring |
| 02.48 | O-Ring | O-Ring |
| 03.00 | Dado | Nut |
| 03.30 | Dado | Nut |
| 04.00 | Dado | Nut |
| 04.05.5 | Vite | Screw |
| 04.16Z | Vite | Screw |
| 05.00 | Dado | Nut |
| 05.10.1 | Vite | Screw |
| 05.20.2 | Vite | Screw |
| 05.25 | Vite | Screw |
| 05.30 | Vite | Screw |
| 06.20.2 | Vite | Screw |
| 07.25 | Chiave esagonale | Hex. bar wrench |
| 07.30 | Chiave esagonale | Hex. bar wrench |
| 07.40 | Chiave esagonale | Hex. bar wrench |
| 09.24.1 | Anello elastico | Elastic ring |
| 10.55 | O-Ring | O-Ring |
| 17.27 | Tappo | Inlet cap |
| 21.75 | Corpo | Body |
| 22.74 | Testa | Head |
| 25.74 | Deflettore scarico | Exhaust deflector |
| 26.74 | Cilindro | Cylinder |
| 27.70 | Anello | Ring |
| 27.74 | Anello cilindro | Cylinder ring |
| 28.74 | Guarnizione testa | Head gasket |
| 30.75 | Pistone | Piston |
| 32.75.4 | Ammortizzatore | Bumper |
| 40.74 | Valvola completa | Valve assembled |
| 44.73 | Guarnizione cilindro | Cylinder gasket |
| 44.74 | Ammortizzatore sup. | Upper bumper |
| 45.70 | Distanziale | Spacer |
| 50.74.1 | Pulsante completo | Trigger valve assy |
| 51.74 | Boccola servovalvola | Servo valve bushing |
| 53.74 | Pistone servovalvola | Servo valve piston |
| 54.83 | Pulsante | Trigger valve |
| 55.74.1 | Raccordo pulsante | Trigger valve bush |
| 64.77 | Guida carrello | Slider guide |
| 64.78 | Carte sicura | Safety guard |
| 72.22 | Fermo carrello | Slider stop |
| 72.74 | Fermo di gomma | Rubber stop |
| 75.65 | Sicura | Safety |
| 76.05 | Perno | Pin |
| 76.46 | Perno molla | Spring pin |
| 77.78 | Guida sicura | Safety guide |
| 80.44 | Grilletto chiusura | Trigger |
| 81.78.1 | KIT Grilletto comando SQ | SQ Trigger |
| 81.78K | Grilletto comando BF | BF Trigger |
| 86.72 | Guida spingipunto | Pusher guide |
| 86.73 | Guida perni | Pin guide |
| 86.74 | Boccola | Bushing |
| 87.70 | Perno porta molla | Spring guide pin |
| 90.41 | Molla | Spring |
| 91.21 | Molla | Spring |
| 91.73 | Molla | Spring |
| 91.77 | Molla | Spring |
| 92.73 | Molla | Spring |
| 93.74 | Molla | Spring |
| 23.70.92 | Battente | Driver |
| 54.70.92 | Caricatore | Magazine |
| 62.70.92 | Carrello | Slider |
| 73.70.92 | Spingipunto | Pusher |
| 84.70.90 | Controtestina | Nose |
| 94.70.92 | Testina | Nose plate |
| D01 | Bocchetta olio | Oiler |
| D02 | Occhiali protettivi | Protective goggles |

Guarnizioni - O-Rings - Dichtungen - Joints toriques - Junta - Δακτύλιος στεγανοποίησης - Vedantes - O-ringen - Contalar



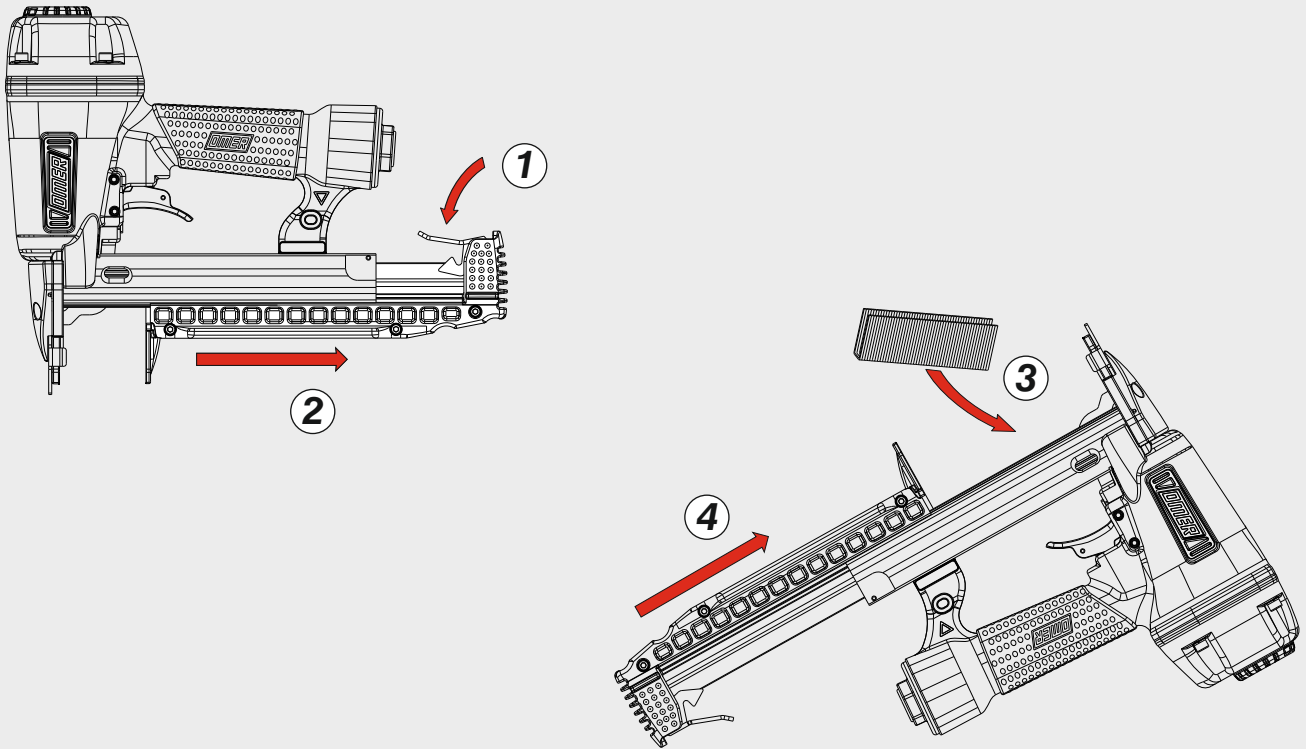
92.740 SQ

cod. 1747200SQ

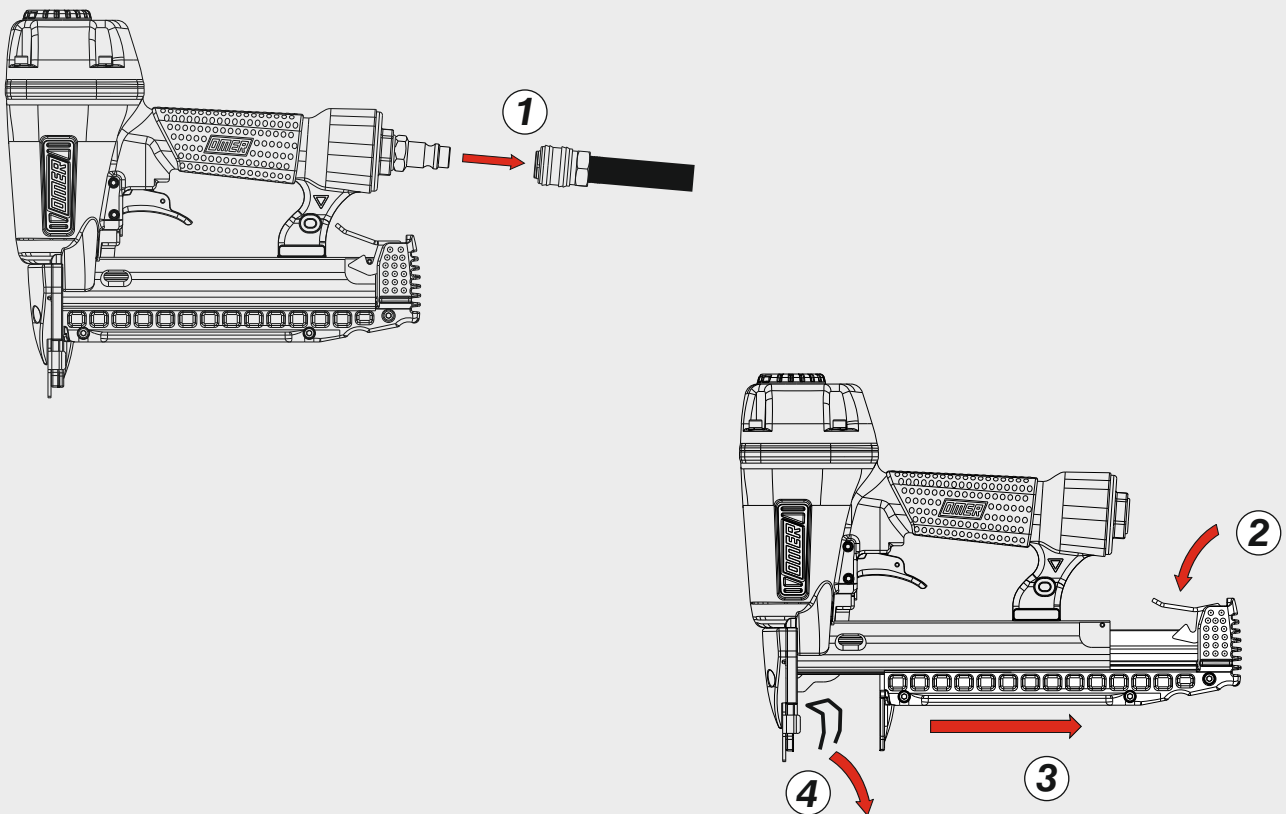
Indice di modifica
Upgrade number

4

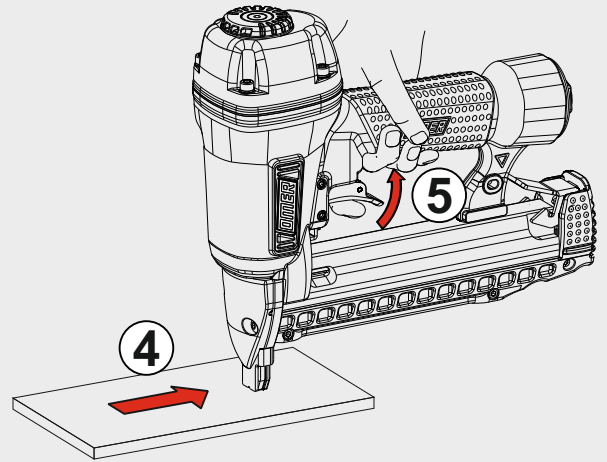
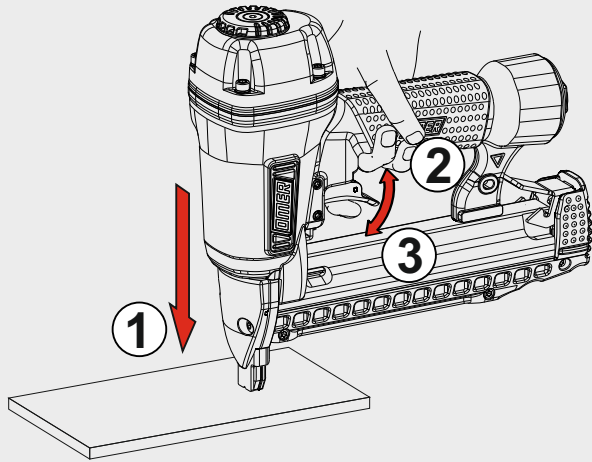
Caricamento da sotto
Bottom load magazine



Disinceppamento - Jam clearing - Staubeseitigung - Décoincement - Desatascamiento - Απεμπλοκή
Desencravamento - Deblokkering bij vastlopen - Sıkışma giderme

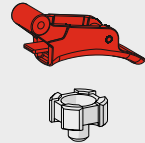


Azionamento sequenziale singolo
Single sequential actuation



A richiesta / On request

Azionamento a contatto con KIT sostitutivo 81.78K (grilletto rosso)
Contact actuation with alternative KIT 81.78K (red trigger)



Oppure - Or

