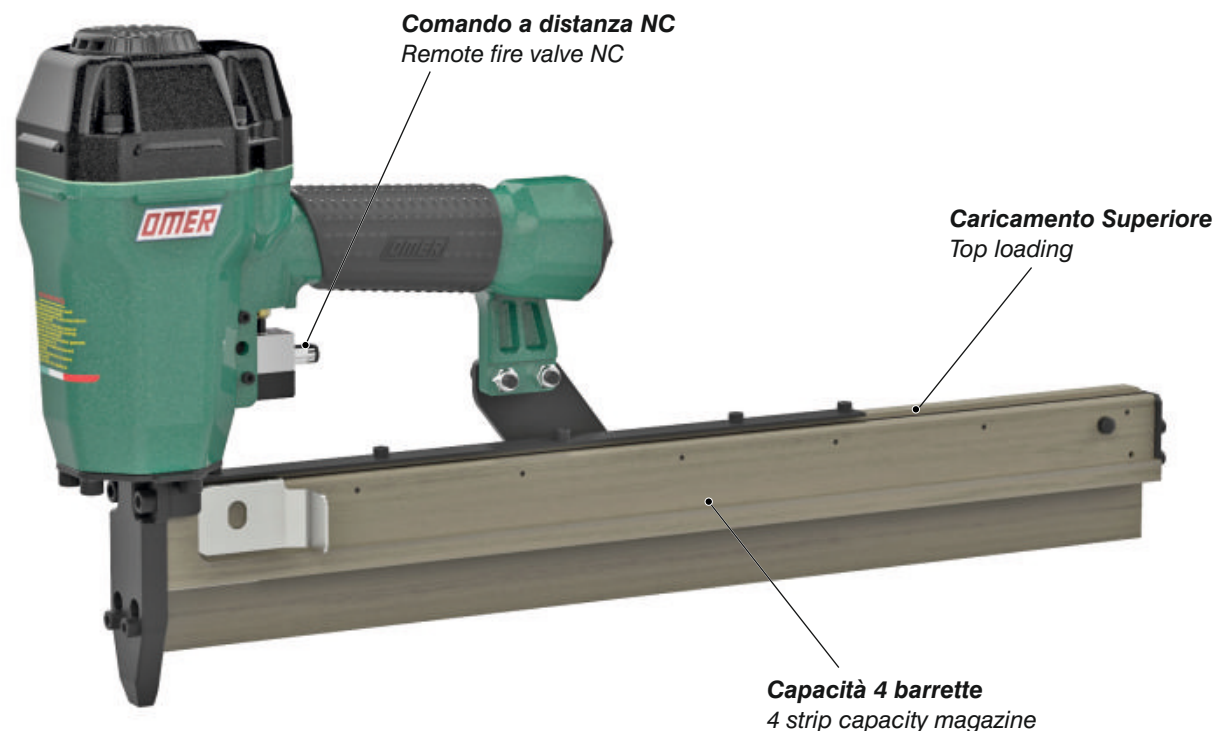




Manuale d'uso, manutenzione e parti di ricambio	Parte 2
Manual for use, maintenance and spare parts	Part 2
Bedienungs- und Wartungshandbuch sowie Ersatzteilliste	Teil 2
Mode d'emploi, de maintenance et pièces de rechange	Partie 2
Manual de uso, mantenimiento y recambios	Part 2
Εγχειρίδιο χρήσης, συντήρησης και ανταλλακτικών	Μέρος 2
Manual de uso, manutenção e peças sobresselentes	Parte 2
Handleiding voor gebruik, onderhoud en wisselstukken	Deel 2
Kullanım, bakım ve yedek parça kılavuzu	Kısım 2
Användar-, underhålls- och reservdelshandbok	Del 2

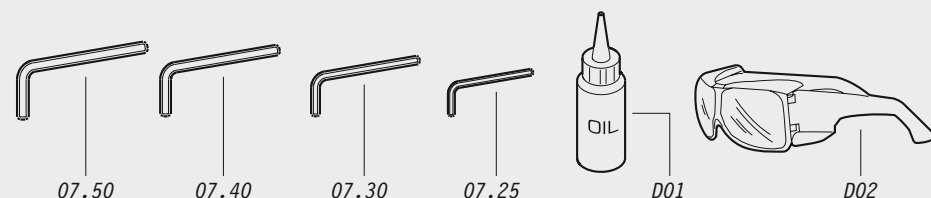


B17.70 CL4-3

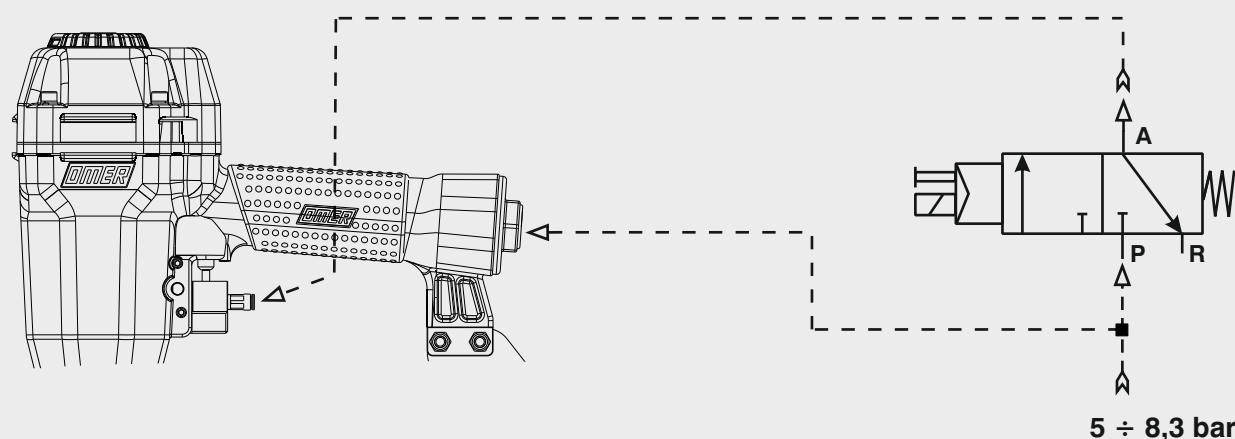
cod. 1841750-3



Dotazioni - Equipment - Ausstattung - Outillage - Dotaciones - Εξοπλισμός
Dotações - Uitrusting - Donanımlar - Utrustning



Schema di collegamento - Connecting diagram

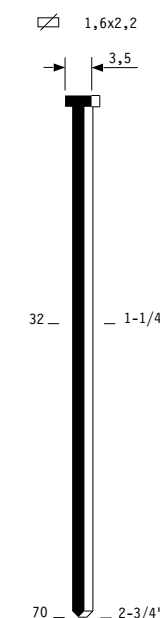


Collegamento per valvola 3/2 NC
Connection for valve 3/2 NC

Dati tecnici Technical data Technische Daten Tekniska data	Caractéristiques techniques Datos técnicos Τεχνικά χαρακτηριστικά	Dados técnicos Technische gegevens Teknik veriler
Misure impiegabili Lengths Verwendbare Nagellänge Dimensioner som kan användas	Dimensions utiles Medidas de longitud Μήκος Αναλωσίμου	Medidas utilizáveis Toepasbare afmetingen Boy
Capacità caricatore n° punti Magazine capacity Magazinkapazität Nägel Magasinkapacitet Antal punkter	Capacité chargeur n° de points Capacidad cargador n° puntos Δυνατότητα γεμιστέρα	Capacidade carregador n° pontos Capaciteit magazijn in aantal spijkers Dergi kapasitesi
Pressione d'esercizio Operating pressure Betriebsdruck Drifttryck	Pression d'exercice Presión de servicio Πίεση λειτουργίας	Pressão de serviço Werkdruk Çalışma basıncı
Consumo aria Air consumption Luftverbrauch Luftförbrukning	Consommation d'air Consumo aire Κατανάλωση αέρα	Consumo ar Luchtverbruik Hava tüketimi
Peso Weight Gewicht Vikt	Poids Peso Βάρος	Peso Gewicht Ağırlık
Dimensioni Dimensions Abmessungen Dimensioner (AxBxH)	Dimensions Dimensiones Διαστάσεις	Dimensões Afmetingen Boyutlar
EN 12549 :2009 EN ISO 3746 :2011 EN ISO 4871 :2009		
Potenza sonora emessa Sound power emitted Emittierte Schalleistung Avgiven ljudeffekt	Puissance sonore émise Potencia sonora emitida Εκπεμπόμενη ηχητική ισχύς	Potência sonora emitida Geëmitteerd geluidsvermogen Çıkan ses gücü (ses desibeli)

Tipo di punto
Type of fastener
Befestigungsmittel
Type de rivet
Tipo de punto
Tύπος αναλωσίμου
Tipo de agrafó
Type nietjes
Zimba ve çivi tipleri
Typ av styggn

Brads 17

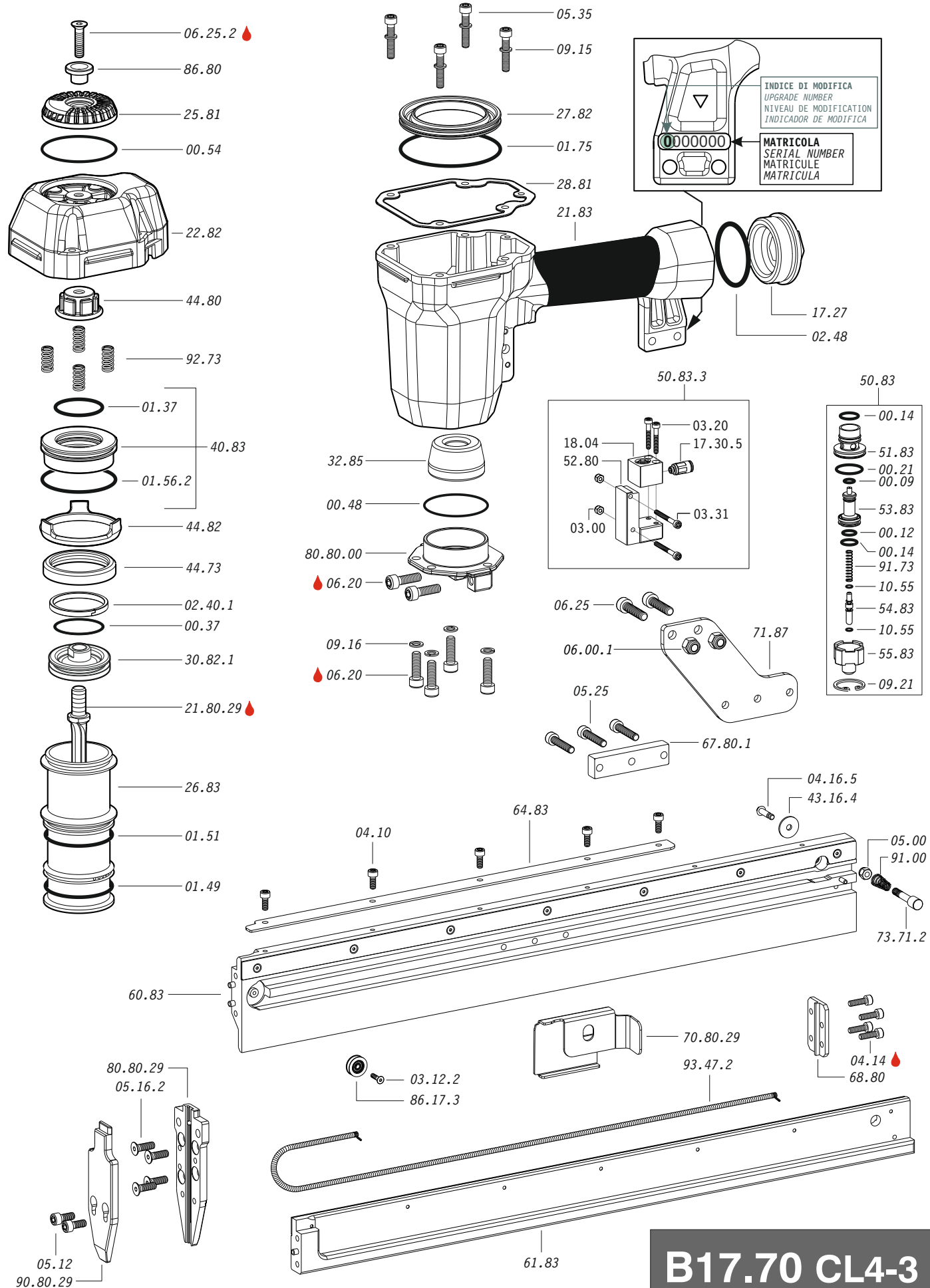


Head width: .137"
Gauge: 14

1841750-3_B1770CL4-3_4_rev21_08/02/23 DV

**DO NOT
HANDHELD
THIS TOOL**





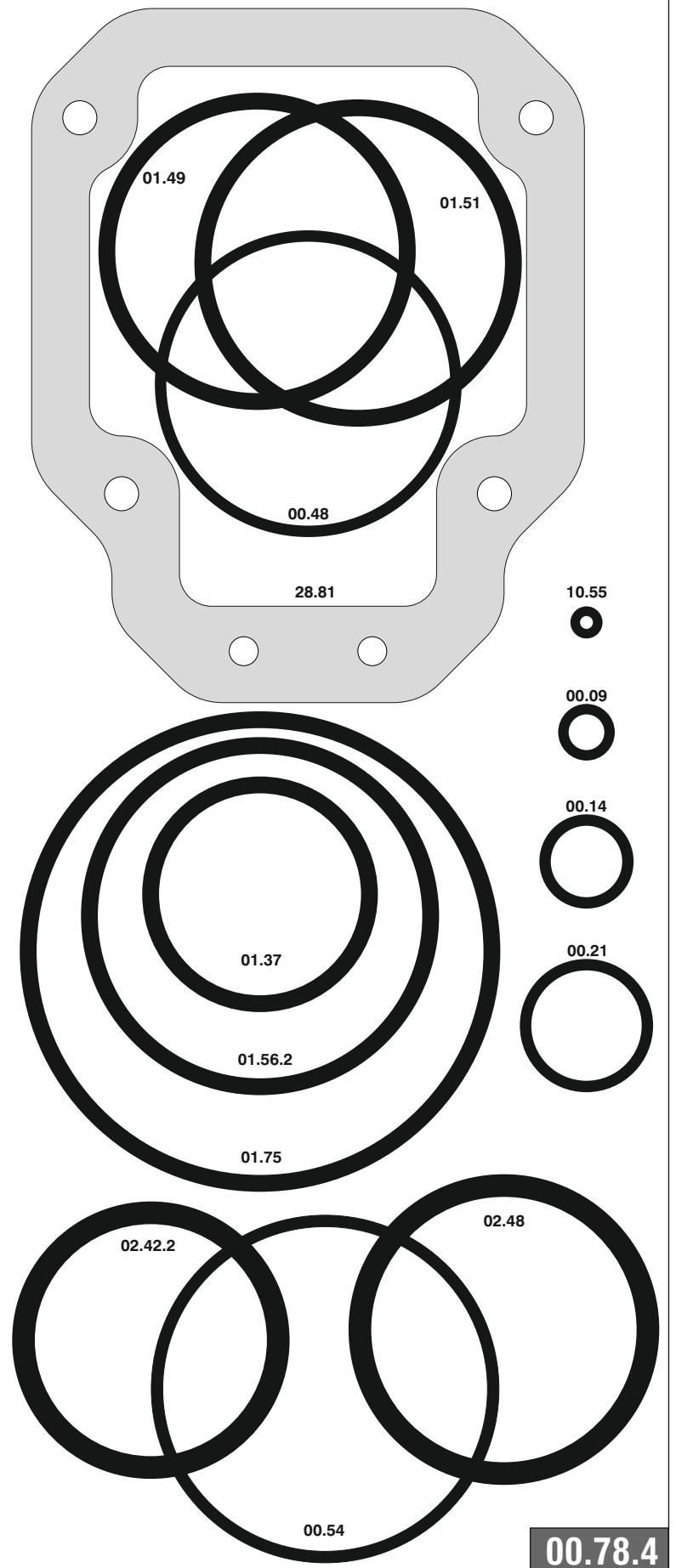
B17.70 CL4-3

Apply Loctite 243

cod. 1841750-3

Cod.	Descrizione	Description
00.09	O-Ring	O-Ring
00.12	O-Ring	O-Ring
00.14	O-Ring	O-Ring
00.21	O-Ring	O-Ring
00.37	O-Ring	O-Ring
00.48	O-Ring	O-Ring
00.54	O-Ring	O-Ring
01.37	O-Ring	O-Ring
01.49	O-Ring	O-Ring
01.51	O-Ring	O-Ring
01.56.2	O-Ring	O-Ring
01.75	O-Ring	O-Ring
02.40.1	Guarnizione	Gasket
02.48	O-Ring	O-Ring
03.00	Dado	Nut
03.12.1	Vite	Screw
03.20	Vite	Screw
03.31	Vite	Screw
04.10	Vite	Screw
04.14	Vite	Screw
04.16.5	Vite	Screw
05.00	Dado	Nut
05.12	Vite	Screw
05.16.2	Vite	Screw
05.25	Vite	Screw
05.35	Vite	Screw
06.00.1	Dado	Nut
06.20	Vite	Screw
06.25.2	Vite	Screw
06.35	Vite	Screw
07.25	Chiave esagonale	Hex. bar wrench
07.30	Chiave esagonale	Hex. bar wrench
07.40	Chiave esagonale	Hex. bar wrench
07.50	Chiave esagonale	Hex. bar wrench
09.15	Rondella	Washer
09.16	Rondella	Washer
09.21	Anello elastico	Elastic ring
10.55	O-Ring	O-Ring
17.27	Tappo	Inlet cap
17.30.5	Attacco	Connection
18.04	Pistoncino	Piston
21.83	Corpo	Body
22.82	Testa	Head
25.81	Deflettore	Deflector
26.83	Cilindro	Cylinder
27.82	Anello cilindro	Cylinder ring
28.81	Guarnizione testa	Head gasket
30.82.1	Pistone	Piston
32.85	Ammortizzatore	Bumper
40.83	Valvola completa	Valve ass'y
43.16.4	Rondella	Washer
44.73	Guarnizione cilindro	Cylinder gasket
44.80	Ammortizzatore	Bumper
44.82	Distanziale	Spacer
50.83	Pulsante completo	Trigger valve ass'y
50.83.3	Comando a distanza	Remote fire valve
51.83	Boccola pulsante	Trigger valve housing
53.83	Pistone servovalvola	Valve piston
54.83	Pulsante	Trigger valve
55.83	Raccordo pulsante	Bush
60.83	Guida sx	Left guide
61.83	Guida dx	Right guide
64.83	Carter	Carter
67.80.1	Distanziale	Spacer
68.80	Fondello	Backplate
71.87	Reggicaricatore	Support
73.71.2	Perno	Pin
86.17.3	Carrucola	Pulley
86.80	Boccola	Bush
91.00	Molla	Spring
91.73	Molla	Spring
92.73	Molla	Spring
93.47.2	Molla	Spring
21.80.29	Battente	Driver
70.80.29	Spingipunto	Pusher
80.80.00	Flangia	Flange
80.80.29	Controtestina	Nose
90.80.29	Testina	Nose plate
D01	Bocchetta olio	Oiler
D02	Occhiali protettivi	Protective goggles

Guarnizioni - O-Rings - Dichtungen - Juntas - Δακτύλιος στεγανοποίησης - Vedantes - O-ringen - Contalar - O-ringar



B17.70 CL4-3

cod. 1841750-3

Indice di modifica
Upgrade number

4

