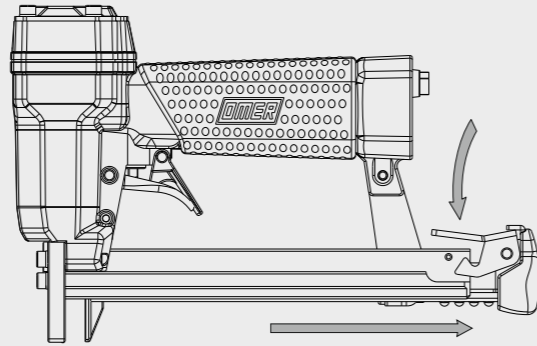


## Caricamento - Loading

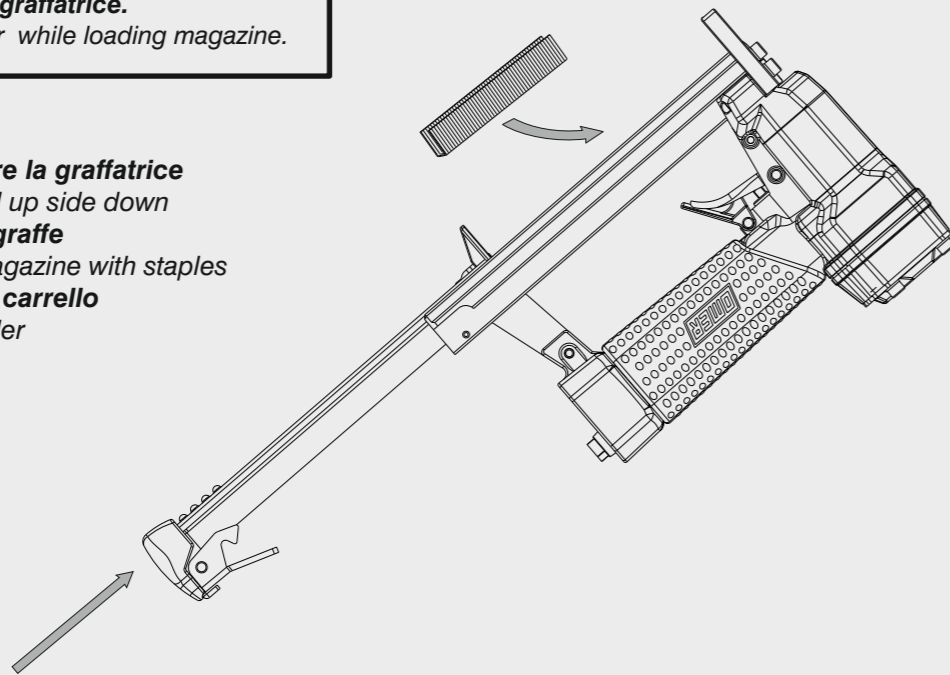
### Caricamento da sotto Bottom load magazine

- **Premere il grilletto chiusura**  
Press the magazine latch
- **Arretrare il carrello**  
Pull the slider

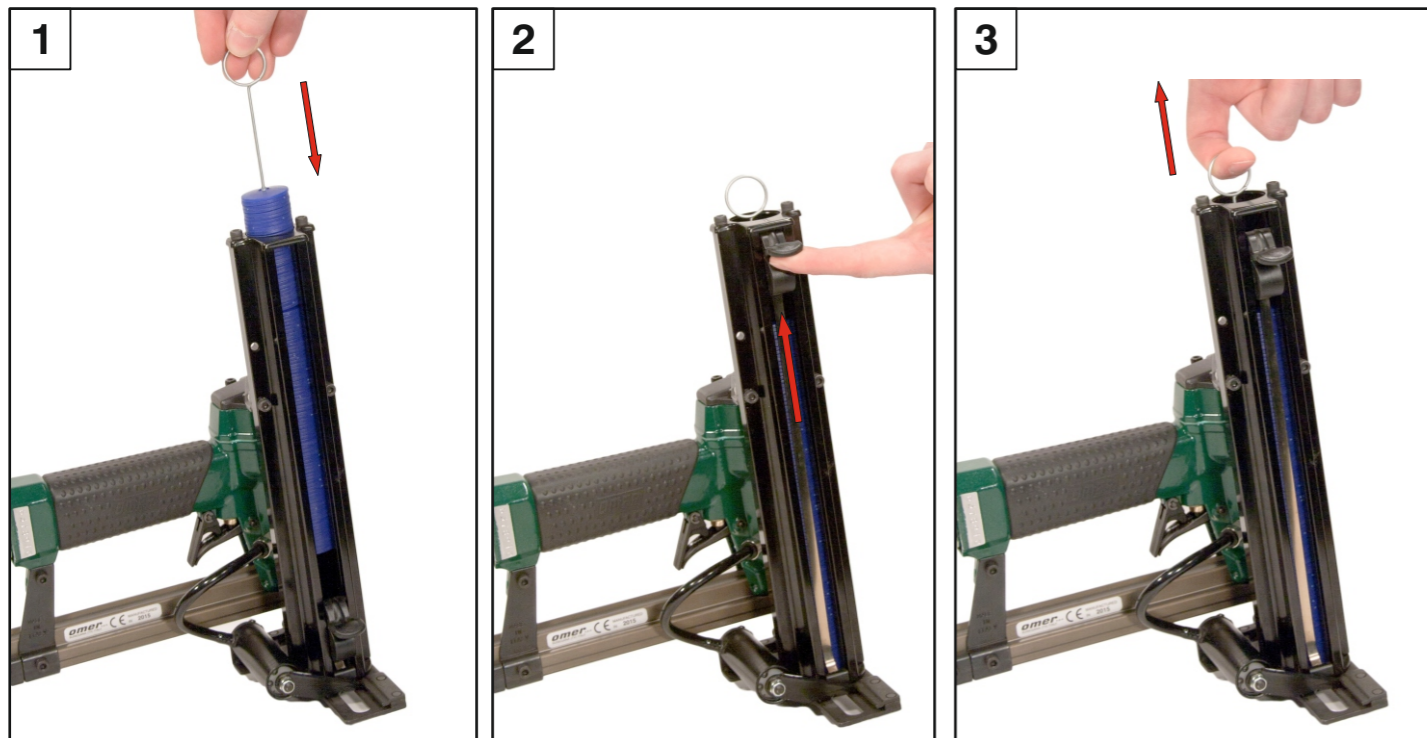


**Non azionare MAI il grilletto comando durante il caricamento della graffatrice.**  
NEVER pull the trigger while loading magazine.

- **Capovolgere la graffatrice**  
Turn the tool up side down
- **Inserire le graffe**  
Load the magazine with staples
- **Chiudere il carrello**  
Shut the slider



## Caricamento dischi - Disk loading



# OMER

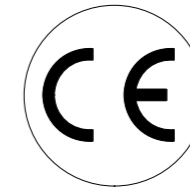
**Manuale d'uso, manutenzione e parti di ricambio** **Parte 2**  
**Use, maintenance and spare parts manual** **Part 2**  
**Gebrauchsanweisung, Instandhaltungsrichtlinien und Ersatzteile** **Teil 2**  
**Manuel d'utilisation, entretien et pièces de rechange** **Partie 2**  
**Manual de uso, mantenimiento y repuestos** **Part 2**  
 Εγχειρίδιο χρήσης, συντήρησης και ανταλλακτικών **2<sup>ο</sup> Μερὸς**  
**Manual de utilização, manutenção e partes sobresselentes** **Parte 2**  
**Handleiding voor gebruik, onderhoud en reservedelslste** **Deel 2**  
**Brugsanvisning, vedligeholdelse og reservedelslste** **Del 2**



## 80.16 DK

cod. 1146000DK

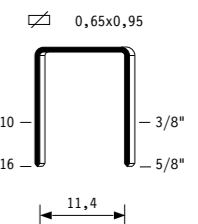
1146000DK\_8016DK\_4 101019 IV



| Dati tecnici<br>Technical data<br>Technische daten   | Données techniques<br>Datos tècnicos<br>Τεχνικά χαρακτηριστικά  | Dados tècnicos<br>Technischegegevens<br>Teknische data  |
|--|---|---|
| <b>Misure impiegabili mm</b><br>Usable lengths mm<br>Gebrauchliche Längen mm   | Mesures utilisable mm<br>Medidas que se pueden emplear mm<br>Διαστάσεις σε μμ   | Medidas que se podem utilizar mm<br>Te gebruiken engtes in mm<br>Brugbare laengder i mm   |
|  |   | <b>10 ÷ 16</b>  |
| <b>Capacità caricatore n° punti</b><br>Magazine capacity No. of fasteners<br>Magazinkapazität Nägel  | Capacité chargeur n° de points<br>Capacidad cargador n° puntos<br>Δυνατότητα γεμιστέρα, σπινδότερες   | Capacidade carregador n° pontos<br>Capaciteit magazijn in aantal spijkers<br>Kapacitet af magasin antal klemme  |
|  |   | <b>145</b><br><b>(100 disk)</b>   |
| <b>Pressione d'esercizio</b><br>Working pressure<br>Betriebsdruck  | Pression de fonctionnement<br>Presión de trabajo<br>Πίεση λειτουργίας ατμ.  | Pressao de trabalho<br>Werkdruk<br>Arbejds tryk bar   |
|  |   | <b>5 ÷ 6,5 bar</b><br><b>70 ÷ 95 psi</b>  |
| <b>Consumo aria litri/colpo</b><br>Air consumption litres/shot<br>Luftverbrauch Liter/Schlag   | Consommation air litre/coup<br>Consumo aire-litros/golpe<br>Καταναλοση αερα λ/ξτπημα  | Consumo ar litro/golpe<br>Luchtverbruik liter/schot<br>Luftforbrug liter/skud   |
|  |   | <b>0,18</b>   |
| <b>Peso kg</b><br>Weight kg<br>Gewicht kg  | Poids kg<br>Peso kg<br>Βαρος κγ   | Peso kg<br>Gewicht in kg<br>Vaegt kg  |
|  |   | <b>1,60</b>   |
| <b>Dimensioni (AxBxH) mm</b><br>Dimensions mm<br>Größe mm  | Dimension mm<br>Dimensiones mm<br>Δυνατότητα γεμιστέρα, σπινδότερες   | Dimencoes mm<br>Afmetingen in mm<br>Dimensioner mm  |
|  |   | <b>223x128x265</b>  |
| <b>EN 12549 :1999 ISO 11201 :1995</b>  |   |   |
| <b>Pressione sonora in pos. operatore</b><br>Sound pressure at the workstation<br>Lärmintensität am Arbeitsplatz   | Pression acoustique près de l'opérateur<br>Presión sonora en posición encargado<br>Ακουστική πίεση στη θέση χειριστού   | Intensidade sonora perto do operador<br>Geluidssterkte op de werkplek<br>Lydstyrke på operatorposten  |
|  |   | <b>84,3 dB(A)</b>   |
| <b>EN 12549 :1999 ISO 3744 :1994</b>   |   |   |
| <b>Potenza sonora emessa</b><br>Emitted sound power<br>Ausgestrahlte Lärmintensität  | Puissance acoustique émise<br>Potencia sonora emitida<br>Ακουστική ισχυ   | Potência sonora emitida<br>Uitgestraalde geluidssterkte<br>Udsendt lydstryrke   |
|  |   | <b>93,7 dB(A)</b>   |
| <b>EN 28662 :1992 ISO 5349 :1986 ISO 8662 -11</b>  |   |   |
| <b>Valore medio ponderato di vibrazione sull'impugnatura max.33 colpi</b><br>Weighted mean value of vibration on the grip max.33 shots<br>Mitteler Vibrationswert, am Griff gemessen max.33 Schäge | Valeur moyenne pondérée de vibration mesurée sur la poignée max.33 coups<br>Valor medio ponderado de vibracion medida en la empuñadura max.33 golp<br>Μεσος ορος μετρησης κραδασμον στη χειρολαβη μαξ.33 ξτπημα | Valor medio ponderado de vibracao medida no punho max.33 golpes<br>Gewogen gemiddelde vibratiewaarde max.33 schot<br>Middelvaerdi af vibrationer pa handtaget max.33 skud |
|  |   | <b>&lt;2,5 m/s<sup>2</sup></b>  |

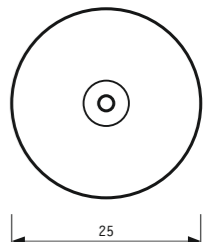
**Tipo di punto**  
Type of fastener  
Befestigungselement  
Type d'agrafe  
Tipo de punto  
Τυπος κερφιου  
Tipo de ponto  
Type nietjes  
Tilspændingstype

**80**

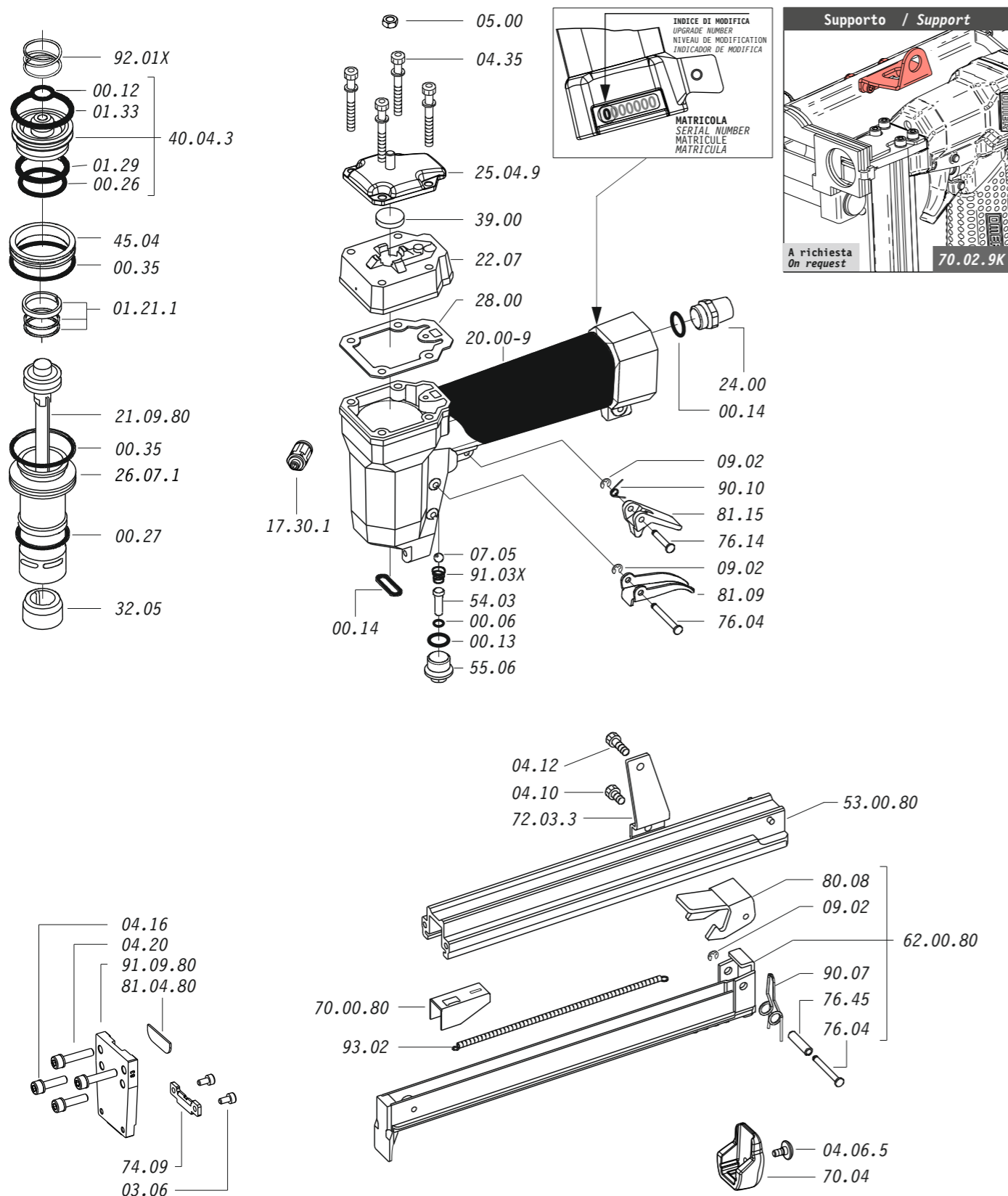


Crown: .500" (1/2")  
Gauge: 21

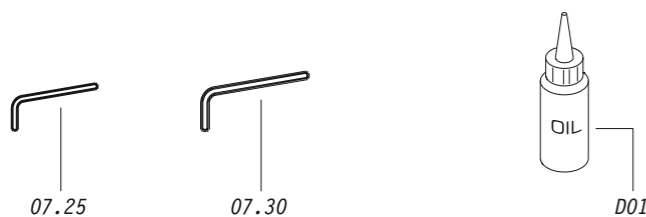
**DK25**



Parti di ricambio - Spare parts - Ersatzteile - Pièces de rechange - Piezas de repuesto  
Ανταλλακτικά - Partes sobresselentes - Tabel te raadplegen - Reservedele



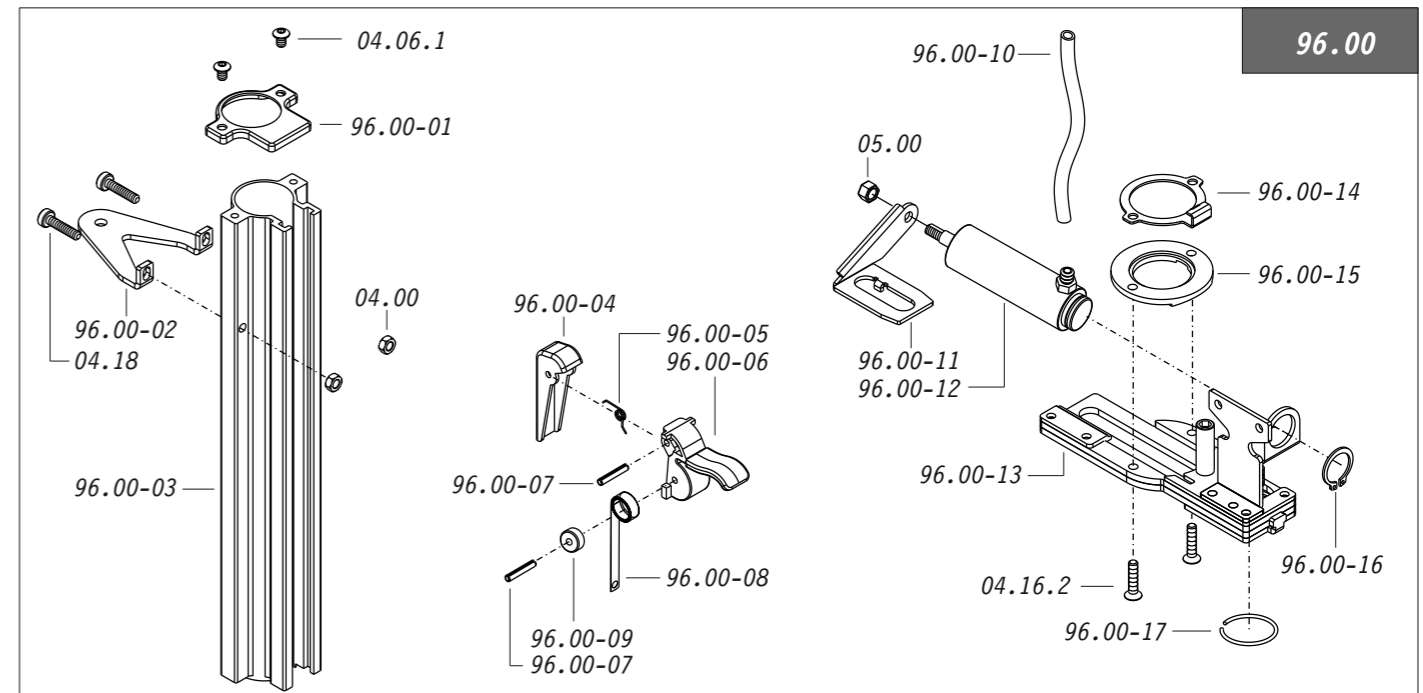
Dotazioni - Equipment - Ausrüstung - Équipements - Equipamiento - Παρεχόμενα  
Equipamento - Uitrusting - Udstyr



**80.16 DK**

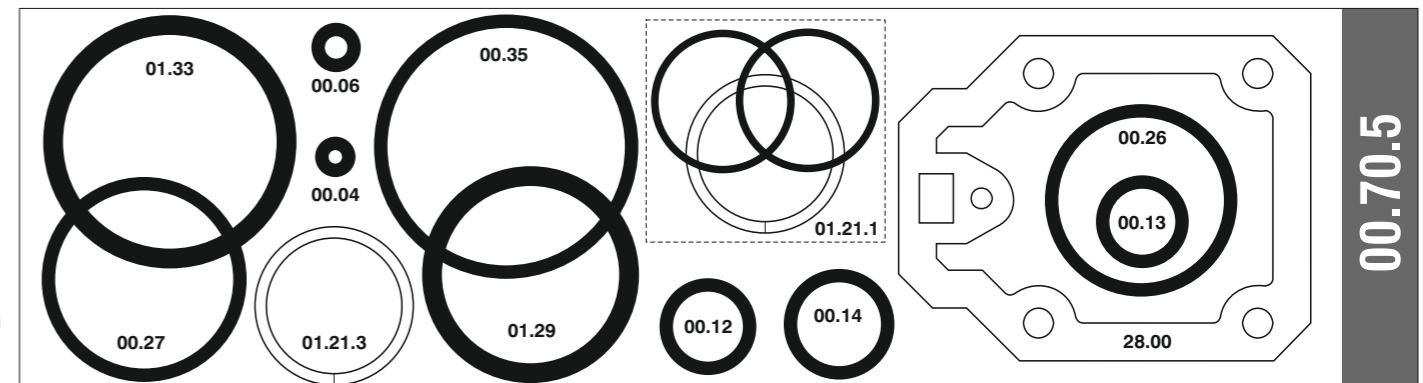
cod. 1146000DK

Parti di ricambio - Spare parts - Ersatzteile - Pièces de rechange - Piezas de repuesto  
Ανταλλακτικά - Partes sobresselentes - Tabel te raadplegen - Reservedele



| Cod.    | Descrizione      | Description     | Cod.     | Descrizione          | Description        | Cod.     | Descrizione         | Description   |
|---------|------------------|-----------------|----------|----------------------|--------------------|----------|---------------------|---------------|
| 00.06   | O-Ring           | O-Ring          | 22.07    | Testa                | Head               | 96.00-03 | Caricatore dischi   | Disk magazine |
| 00.12   | O-Ring           | O-Ring          | 24.00    | Silenziatore         | Silencer           | 96.00-04 | Spingidisco         | Pusher        |
| 00.13   | O-Ring           | O-Ring          | 25.04.9  | Deflettore           | Exhaust deflector  | 96.00-05 | Molla               | Spring        |
| 00.14   | O-Ring           | O-Ring          | 26.07.1  | Cilindro             | Cylinder           | 96.00-06 | Leva                | Latch         |
| 00.26   | O-Ring           | O-Ring          | 28.00    | Guarnizione          | Gasket             | 96.00-07 | Perno               | Pin           |
| 00.27   | O-Ring           | O-Ring          | 32.05    | Ammortizzatore       | Bumper             | 96.00-08 | Molla               | Spring        |
| 00.35   | O-Ring           | O-Ring          | 39.00    | Guarnizione scarico  | Exhaust gasket     | 96.00-09 | Rullo molla         | Roller        |
| 01.21.1 | Guarnizione      | Gasket          | 40.04.3  | Valvola completa     | Valve ass'y        | 96.00-10 | Tubo                | Tube          |
| 01.29   | O-Ring           | O-Ring          | 45.04    | Anello valvola       | Ring               | 96.00-11 | Alimentatore dischi | Disk feeder   |
| 01.33   | O-Ring           | O-Ring          | 54.03    | Pulsante             | Trigger valve      | 96.00-12 | Pistone             | Piston        |
| 03.06   | Vite             | Screw           | 55.06    | Raccordo             | Bush               | 96.00-13 | Piastra             | Plate         |
| 04.00   | Dado             | Nut             | 70.02.9  | Supporto bilanciante | Tool hangers supp. | 96.00-14 | Anello              | Ring          |
| 04.06.1 | Vite             | Screw           | 70.04    | Protezione           | Guard              | 96.00-15 | Anello              | Ring          |
| 04.06.5 | Vite             | Screw           | 72.03.3  | Reggicaricatore      | Support            | 96.00-16 | Anello elastico     | Elastic ring  |
| 04.10   | Vite             | Screw           | 74.09    | Piastrina            | Plate              | 96.00-17 | Anello              | Ring          |
| 04.12   | Vite             | Screw           | 76.04    | Perno                | Pin                | 21.09.80 | Battente            | Driver        |
| 04.14   | Vite             | Screw           | 76.14    | Perno                | Pin                | 53.00.80 | Caricatore          | Magazine      |
| 04.16.2 | Vite             | Screw           | 76.45    | Perno molla          | Pin                | 62.00.80 | Carrello            | Slider        |
| 04.18   | Vite             | Screw           | 80.08    | Grilletto chiusura   | Trigger            | 70.00.80 | Spingipunto         | Pusher        |
| 04.20   | Vite             | Screw           | 81.09    | Grilletto comando    | Trigger            | 81.04.80 | Controtestina       | Nose          |
| 04.35   | Vite             | Screw           | 81.15    | Controgrilletto      | Safety             | 91.09.80 | Testina             | Nose plate    |
| 05.00   | Dado             | Nut             | 90.07    | Molla                | Spring             | D01      | Bocchetta olio      | Oiler         |
| 07.05   | Sfera            | Ball            | 90.10    | Molla                | Spring             |          |                     |               |
| 07.25   | Chiave esagonale | Hex. bar wrench | 91.03X   | Molla                | Spring             |          |                     |               |
| 07.30   | Chiave esagonale | Hex. bar wrench | 92.01X   | Molla                | Spring             |          |                     |               |
| 09.02   | Anello elastico  | Elastic ring    | 93.02    | Molla                | Spring             |          |                     |               |
| 09.14   | Rondella         | Washer          | 96.00    | Kit caricatore disc. | Magazine disk Kit  |          |                     |               |
| 17.30.1 | Attacco          | Connection      | 96.00-01 | Tappo                | Cap                |          |                     |               |
| 20.00-9 | Corpo            | Body            | 96.00-02 | Supporto             | Support            |          |                     |               |

Guarnizioni - O-Rings - Dichtungen - Joints - Empaquetadura de anillo - Λαστιχάκια - Kit de o-rings - O-ringen - Pakninger



**80.16 DK**

cod. 1146000DK

Indice di modifica  
Upgrade number

**4**

4410850

**00.70.5**

1146000DK\_8016DK\_4\_101019\_IV