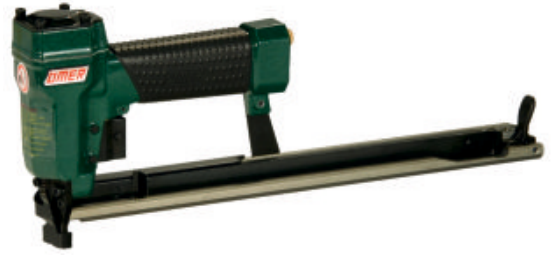




<b>Manuale d'uso, manutenzione e parti di ricambio</b>	<b>Parte 2</b>
<b>Manual for use, maintenance and spare parts</b>	<b>Part 2</b>
<b>Bedienungs- und Wartungshandbuch sowie Ersatzteilliste</b>	<b>Teil 2</b>
<b>Mode d'emploi, de maintenance et pièces de rechange</b>	<b>Partie 2</b>
<b>Manual de uso, mantenimiento y recambios</b>	<b>Part 2</b>
<b>Εγχειρίδιο χρήσης, συντήρησης και ανταλλακτικών</b>	<b>Μέρος 2</b>
<b>Manual de uso, manutenção e peças sobresselentes</b>	<b>Parte 2</b>
<b>Handleiding voor gebruik, onderhoud en wisselstukken</b>	<b>Deel 2</b>
<b>Kullanım, bakım ve yedek parça kılavuzu</b>	<b>Kısım 2</b>
<b>Användar-, underhålls- och reservdelshandbok</b>	<b>Del 2</b>



# 64.16 CLC

cod. 11454510



### Dati tecnici

Technical data  
Technische Daten  
Tekniska data

Caractéristiques techniques  
Datos técnicos  
Τεχνικά χαρακτηριστικά

Dados técnicos  
Technische gegevens  
Teknik veriler

### Misure impiegabili

Lenghts  
Verwendbare Nagellänge  
Dimensioner som kan användas

Dimensions utiles  
Medidas de longitud  
Μήκος Αναλωσίμου

Medidas utilizáveis  
Toepasbare afmetingen  
Boy

**4 ÷ 16**

### Capacità caricatore n° punti

Magazine capacity  
Magazinkapazität  
Nägels  
Magasinkapacitet  
Antal punkter

Capacité chargeur n° de points  
Capacidad cargador n° puntos  
Δυνατότητα γεμιστρα

Capacidade carregador n° pontos  
Capaciteit magazijn in aantal spijkers  
Dergi kapasitesi

**340**

### Pressione d'esercizio

Operating pressure  
Betriebsdruck  
Drifttryck

Pression d'exercice  
Presión de servicio  
Πίεση λειτουργίας

Pressão de serviço  
Werkdruk  
Çalışma basıncı

**4 ÷ 6 bar  
60 ÷ 90 psi**

### Consumo aria

Air consumption  
Luftverbrauch  
Luftförbrukning

Consommation d'air  
Consumo aire  
Κατανάλωση αέρα

Consumo ar  
Luchtverbruik  
Hava tüketimi

**0,13**

### Peso

Weight  
Gewicht  
Vikt

Poids  
Peso  
Βάρος

Peso  
Gewicht  
Ağırlık

**1,10**

### Dimensioni

Dimensions  
Abmessungen  
Dimensioner (AxBxH)

Dimensions  
Dimensiones  
Διαστάσεις

Dimensões  
Afmetingen  
Boyutlar

**362x43x148**

(LxWxH)

### EN 12549 :2009 EN ISO 4871 :2009

#### Pressione sonora in pos. operatore

Sound pressure in operator's position  
Schalldruck am Arbeitsplatz  
Ljudtryck på operatörsplatsen

Pression sonore poste Opérateur  
Presión sonora en la pos. del operador  
Ηχητική πίεση στη θέση του Χειριστή

Pressão sonora na posição Operador  
Geluidsdruk op de werkplaats  
Operatör pozisyonunda ses basıncı

**84,3 dB(A)**

(K= 4 dB)

### EN 12549 :2009 EN ISO 3746 :2011 EN ISO 4871 :2009

#### Potenza sonora emessa

Sound power emitted  
Emittierte Schalleistung  
Avgiven ljudeffekt

Puissance sonore émise  
Potencia sonora emitida  
Εκπεμπόμενη ηχητική ισχύς

Potência sonora emitida  
Geëmitteerd geluidsvermogen  
Çıkan ses gücü (ses desibeli)

**93,7 dB(A)**

(K= 4 dB)

### CEN ISO/TS 8662-11 :2006 EN ISO 5349-2 :2004 EN 12096 :1999

#### Emissione vibratoria sull'impugnatura

Vibratory emissions on handle  
Vibrationsemission am Griff  
Vibrationsemission på handtaget

Emission vibratoire sur la prise en main  
Emisión de vibraciones en la empuñadura  
Εκπεμπόμενες δονήσεις στη λαβή

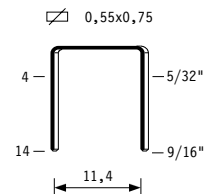
Emissão vibratória na empunhadura  
Trillingsemissie op de handgreep  
Tutamak üzerindeki vibrasyon emisyonları

**<2,5 m/s<sup>2</sup>**

(K= 2 m/s<sup>2</sup>)

**Tipo di punto**  
Type of fastener  
Befestigungsmittel  
Type de rivet  
Tipo de punto  
Τύπος αναλωσίμου  
Tipo de agrafó  
Type nietjes  
Zmba ve çivi tipleri  
Typ av stygn

**64**

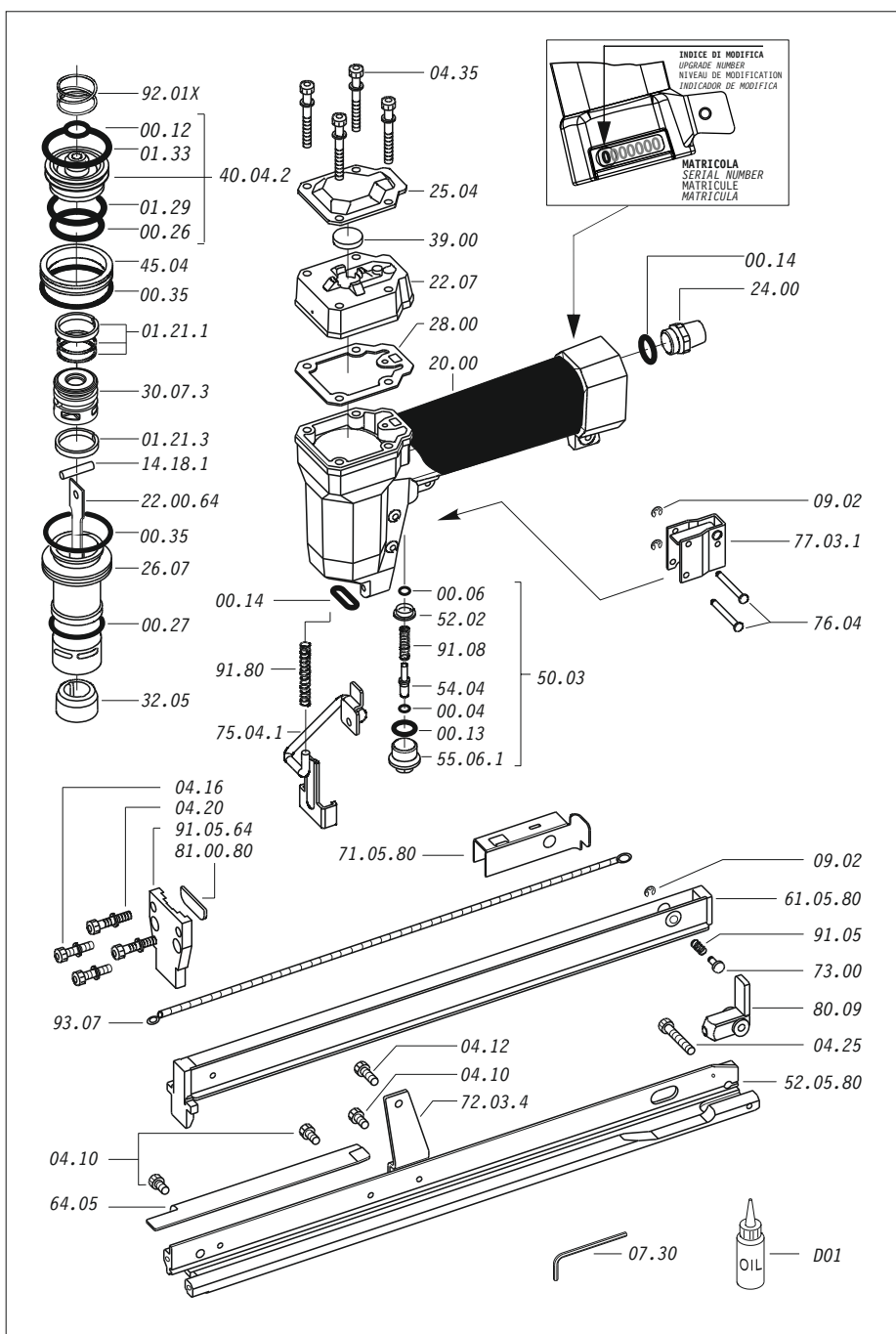


Gauge: 23

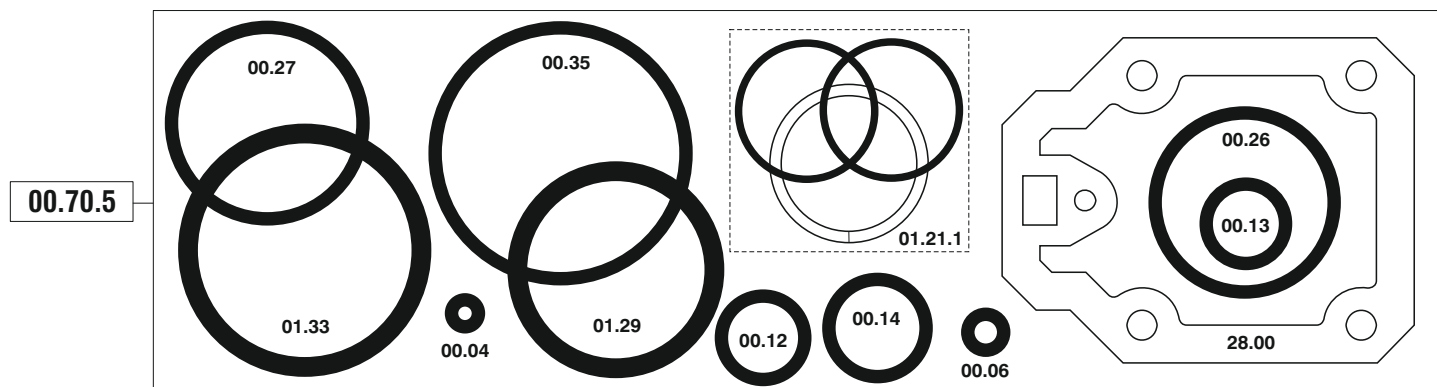
Crown: .492" (1/2")

Parti di ricambio - Spare parts - Ersatzteile - Pièces de rechange - Recambios  
Ανταλλακτικά - Partes sobresselentes - Wisselstukken - Yedek parçalar - Reservdelar

Cod.	Descrizione	Description
00.04	O-Ring	O-Ring
00.06	O-Ring	O-Ring
00.12	O-Ring	O-Ring
00.13	O-Ring	O-Ring
00.14	O-Ring	O-Ring
00.26	O-Ring	O-Ring
00.27	O-Ring	O-Ring
00.35	O-Ring	O-Ring
01.21.1	Guarnizione	Gasket
01.21.3	Guarnizione	Gasket
01.29	O-Ring	O-Ring
01.33	O-Ring	O-Ring
04.10	Vite	Screw
04.12	Vite	Screw
04.16	Vite	Screw
04.20	Vite	Screw
04.25	Vite	Screw
04.35	Vite	Screw
07.30	Chiave esagonale	Hex. bar wrench
09.02	Anello elastico	Elastic ring
14.18.1	Spina	Pin
20.00	Corpo	Body
22.07	Testa	Head
24.00	Silenziatore	Silencer
25.04	Deflettore	Exhaust deflector
26.07	Cilindro	Cylinder
28.00	Guarnizione	Gasket
30.07.3	Pistone	Piston
32.05	Ammortizzatore	Bumper
39.00	Guarnizione scarico	Exhaust gasket
40.04.2	Valvola completa	Valve ass'y
45.04	Anello valvola	Ring
50.03	Pulsante completo	Trigger valve ass'y
52.02	Boccola	Bush
54.04	Pulsante	Trigger valve
55.06.1	Raccordo	Bush
64.05	Carter	Hold down
72.03.4	Reggicaricatore	Support
73.00	Perno	Pin
75.04.1	Sicura	Safety
76.04	Perno	Pin
77.03.1	Guida tastatore	Actuator guide
80.09	Grilletto chiusura	Trigger
91.05	Molla	Spring
91.08	Molla	Spring
91.80	Molla	Spring
92.01X	Molla	Spring
93.07	Molla	Spring
22.00.64	Battente	Driver
52.05.80	Caricatore	Magazine
61.05.80	Carrello	Slider
71.05.80	Spingipunto	Pusher
81.00.80	Controtestina	Nose
91.05.64	Testina	Nose plate
D01	Bocchetta olio	Oiler



Guarnizioni - O-Rings - Dichtungen - Joints toriques - Juntas  
Δακτύλιος στεγανοποίησης - Vedantes - O-ringen - Contalar-Förseglingar



64.16 CLC

cod. 11454510

Indice di modifica  
Upgrade number

6