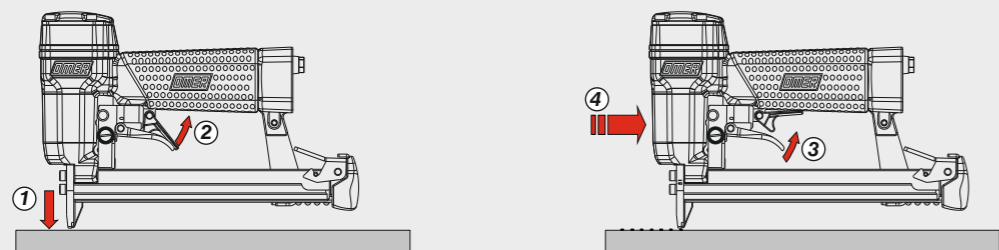


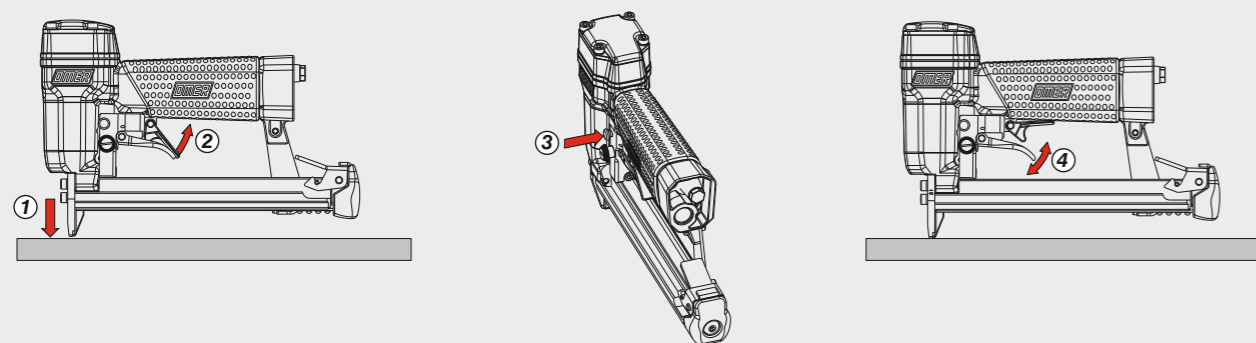
### Azionamento continuo con doppia attivazione

Continual actuation with dual activation



### Azionamento singolo con doppia attivazione

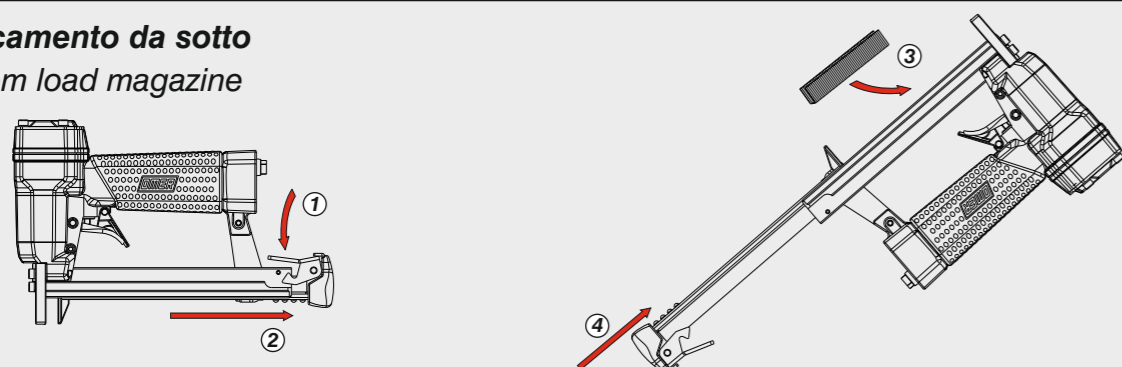
Single actuation with dual activation



### Caricamento - Loading - Laden - Chargement - Carga - Γέμισμα - Carregamento - Laden - Yükleme - Laddning

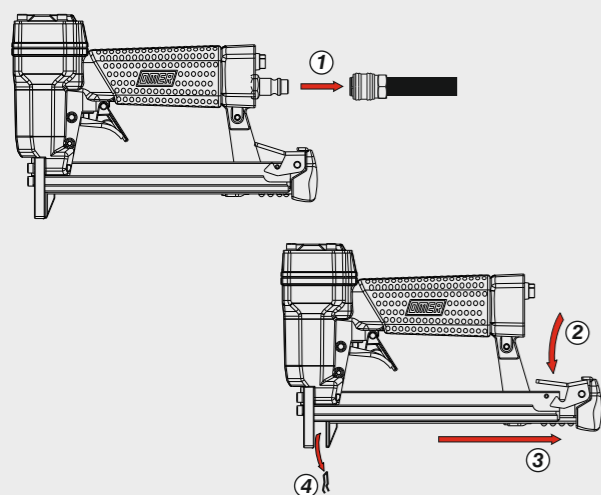
### Caricamento da sotto

Bottom load magazine



### Disinceppamento - Jam clearing - Staubeseitigung

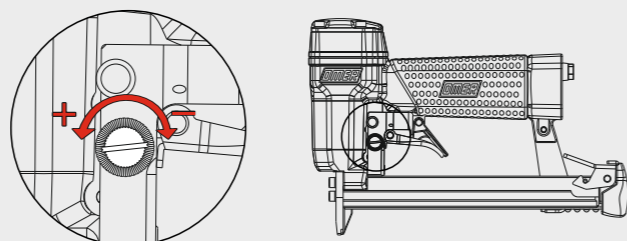
Décoincement - Desatascamiento - Απεμπλοκή  
 Desencravamento - Deblokkering bij vastlopen  
 Sıkışma giderme - Rensning av igensättningar



### Regolazioni - Adjustments

#### Regolazione della velocità

Speed adjustment



Max 1800 rpm



Manuale d'uso, manutenzione e parti di ricambio	Parte 2
Manual for use, maintenance and spare parts	Part 2
Bedienungs- und Wartungshandbuch sowie Ersatzteilleiste	Teil 2
Mode d'emploi, de maintenance et pièces de rechange	Partie 2
Manual de uso, mantenimiento y recambios	Part 2
Εγχειρίδιο χρήσης, συντήρησης και ανταλλακτικών	Μέρος 2
Manual de uso, manutenção e peças sobresselentes	Parte 2
Handleiding voor gebruik, onderhoud en wisselstukken	Deel 2
Kullanım, bakım ve yedek parça kılavuzu	Kısım 2
Användar-, underhålls- och reservdelshandbok	Del 2



80.16 CLV-1685

cod. 11560580-1685



#### Dati tecnici

Technical data  
 Technische Daten  
 Tekniska data

#### Caractéristiques techniques

Datos técnicos  
 Τεχνικά χαρακτηριστικά

#### Dados técnicos

Technische gegevens  
 Teknik veriler

#### Misure impiegabili

Lenghts  
 Verwendbare Nagellänge  
 Dimensioner som kan användas

#### Dimensions utiles

Medidas de longitud  
 Μήκος Αναλωσίμου

#### Medidas utilizáveis

Toepasbare afmetingen  
 Boy

4 ÷ 16

#### Capacità caricatore n° punti

Magazine capacity  
 Magazinkapazität  
 Nägel  
 Magasinkapacitet  
 Antal punkter

#### Capacité chargeur n° de points

Capacidad cargador n° puntos  
 Δυνατότητα γεμιστέρα

#### Capacidade carregador n° pontos

Capaciteit magazijn in aantal spijkers  
 Dergi kapasitesi

280

#### Pressione d'esercizio

Operating pressure  
 Betriebsdruck  
 Drifttryck

#### Pression d'exercice

Presión de servicio  
 Πίεση λειτουργίας

#### Pressão de serviço

Werkdruk  
 Çalışma basıncı

4 ÷ 6 bar  
 60 ÷ 90 psi

#### Consumo aria

Air consumption  
 Luftverbrauch  
 Luftförbrukning

#### Consommation d'air

Consumo aire  
 Κατανάλωση αέρα

#### Consumo ar

Luchtverbruik  
 Hava tüketimi

0,13

#### Peso

Weight  
 Gewicht  
 Vikt

#### Poids

Peso  
 Βάρος

#### Peso

Peso  
 Ağırlık

1,15

#### Dimensioni

Dimensions  
 Abmessungen  
 Dimensioner (AxHxH)

#### Dimensions

Dimensiones  
 Διαστάσεις

#### Dimensões

Afmetingen  
 Boyutlar

357x43x151

(LxWxH)

#### EN 12549 :2009 EN ISO 4871 :2009

#### Pressione sonora in pos. operatore

Sound pressure in operator's position  
 Schalldruck am Arbeitsplatz  
 Ljudtryck på operatörsplatsen

#### Pression sonore poste Opérateur

Presión sonora en la pos. del operador  
 Ηχητική πίεση στη θέση του χειριστή

#### Pressão sonora na posição Operador

Geluidsdruk op de werkplaats  
 Operatör pozisyonunda ses basıncı

83 dB(A)

(K= 4 dB)

#### EN 12549 :2009 EN ISO 3746 :2011 EN ISO 4871 :2009

#### Potenza sonora emessa

Sound power emitted  
 Emittierte Schalleistung  
 Avgiven ljudeffekt

#### Puissance sonore émise

Potencia sonora emitida  
 Εκπεμπόμενη ηχητική ισχύς

#### Potência sonora emitida

Geëmitteerd geluidsvermogen  
 Çıkan ses gücü (ses desibeli)

90 dB(A)

(K= 4 dB)

#### CEN ISO/TS 8662-11 :2006 EN ISO 5349-2 :2004 EN 12096 :1999

#### Emissione vibratoria sull'impugnatura

Vibratory emissions on handle  
 Vibrationsmission am Griff  
 Vibrationsmission på handtaget

#### Émission vibratoire sur la prise en main

Emisión de vibraciones en la empuñadura  
 Εκπεμπόμενες δονήσεις στη λαβή

#### Emissão vibratória na empunhadura

Trillingsemissie op de handgreep  
 Tutamak üzerinde vibrasyon emisyonları

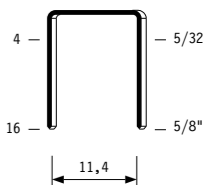
2,60 m/s<sup>2</sup>

(K= 2 m/s<sup>2</sup>)

**Tipo di punto**  
 Type of fastener  
 Befestigungsmittel  
 Type de rivet  
 Tipo de punto  
 Τύπος αναλωσίμου  
 Tipo de agrafó  
 Type nietjes  
 Zimba ve çivi tipleri  
 Typ av stygn

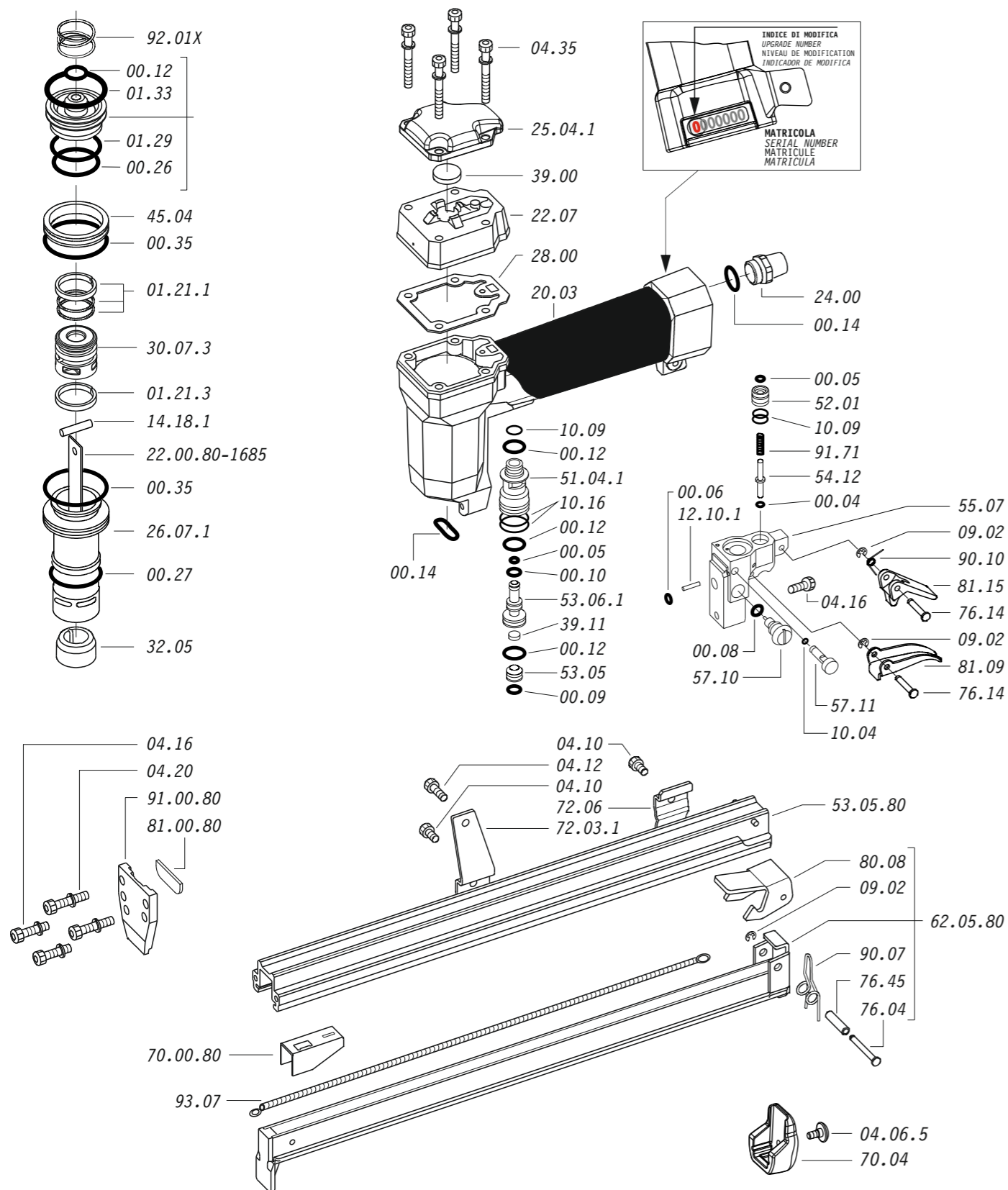
80

0,65x0,95

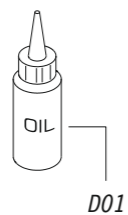


Crown: .500" (1/2")  
 Gauge: 21

Parti di ricambio - Spare parts - Ersatzteile - Pièces de rechange - Recambios  
Ανταλλακτικά - Partes sobresselentes - Wisselstukken - Yedek parçalar - Reservdelar



Dotazioni - Equipment - Ausstattung - Outillage - Dotaciones - Εξοπλισμός  
Dotações - Uitrusting - Donanımlar - Utrustning



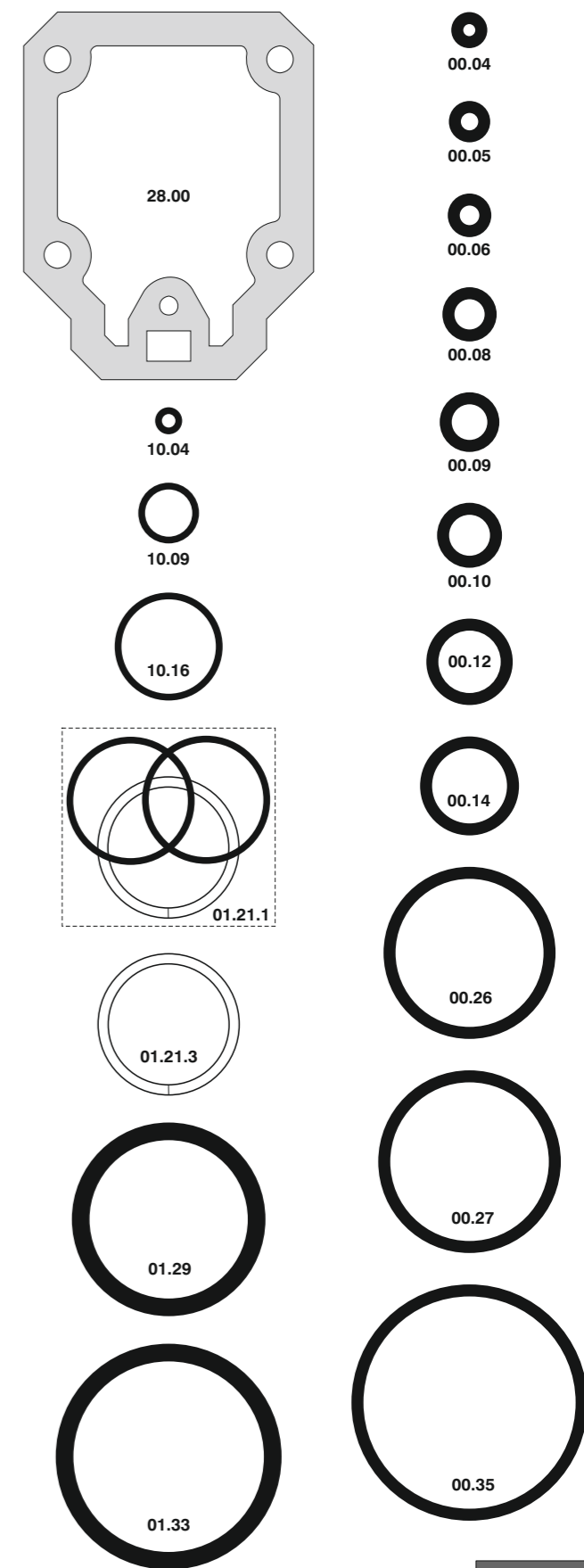
**80.16 CLV-1685**

cod. 11560580-1685

Parti di ricambio - Spare parts - Ersatzteile - Pièces de rechange - Recambios  
Ανταλλακτικά - Partes sobresselentes - Wisselstukken - Yedek parçalar - Reservdelar

Cod.	Descrizione	Description
00.04	O-Ring	O-Ring
00.05	O-Ring	O-Ring
00.06	O-Ring	O-Ring
00.08	O-Ring	O-Ring
00.09	O-Ring	O-Ring
00.10	O-Ring	O-Ring
00.12	O-Ring	O-Ring
00.14	O-Ring	O-Ring
00.26	O-Ring	O-Ring
00.27	O-Ring	O-Ring
00.35	O-Ring	O-Ring
01.21.1	Guarnizione	Gasket
01.21.3	Guarnizione	Gasket
01.29	O-Ring	O-Ring
01.33	O-Ring	O-Ring
04.06.5	Vite	Screw
04.10	Vite	Screw
04.12	Vite	Screw
04.16	Vite	Screw
04.20	Vite	Screw
04.35	Vite	Screw
07.30	Chiave esagonale	Hex. bar wrench
09.02	Anello elastico	Elastic ring
10.04	O-Ring	O-Ring
10.09	O-Ring	O-Ring
10.16	O-Ring	O-Ring
12.10.1	Spina	Pin
14.18.1	Spina	Pin
20.03	Corpo	Body
22.07	Testa	Head
24.00	Silenziatore	Silencer
25.04.1	Deflettore	Exhaust deflector
26.07.1	Cilindro	Cylinder
28.00	Guarnizione	Gasket
30.07.3	Pistone	Piston
32.05	Ammortizzatore	Bumper
39.00	Guarnizione scarico	Exhaust gasket
39.11	Guarnizione servovalvola	Valve gasket
40.04.1	Valvola completa	Valve ass'y
45.04	Anello valvola	Ring
51.04.1	Cilindro servovalvola	Valve cylinder
52.01	Boccola pulsante	Tiger valve bush
53.05	Pistoncino	Piston
53.06.1	Pistone servovalvola	Valve piston
54.12	Pulsante	Trigger valve
55.07	Corpo servovalvola	Valve body
57.10	Regolatore	Regulator
57.11	Interruttore	Switch
70.04	Protezione	Guard
72.03.1	Reggicaricatore	Support
72.06	Fermo carrello	Slider-stop
76.04	Perno	Pin
76.14	Perno	Pin
76.45	Perno molla	Pin
80.08	Grilletto chiusura	Trigger
81.09	Grilletto comando	Trigger
81.15	Controgrilletto	Trigger
90.07	Molla	Spring
90.10	Molla	Spring
91.71	Molla	Spring
92.01X	Molla	Spring
93.07	Molla	Spring
22.00.80-1685	Battente	Driver
53.05.80	Caricatore	Magazine
62.05.80	Carrello	Slider
70.00.80	Spingipunto	Pusher
81.00.80	Controtestina	Nose
91.00.80	Testina	Nose plate
D01	Bocchetta olio	Oiler

Guarnizioni - O-Rings - Dichtungen - Joints toriques - Juntas - Δακτύλιος στεγανοποίησης - Vedantes - O-ringen - Contalar - O-ringar



00.70.6

**80.16 CLV-1685**

cod. 11560580-1685

Indice di modifica  
Upgrade number

**6**