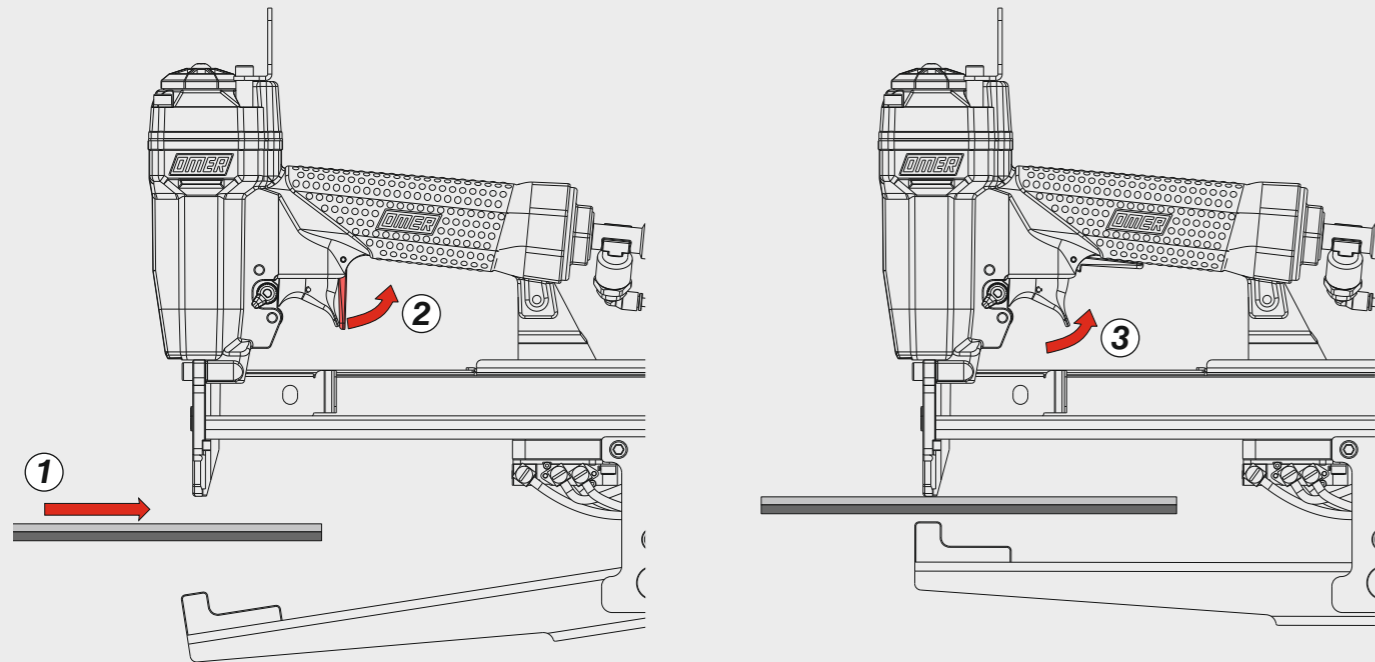


Azionamento singolo con doppia attivazione

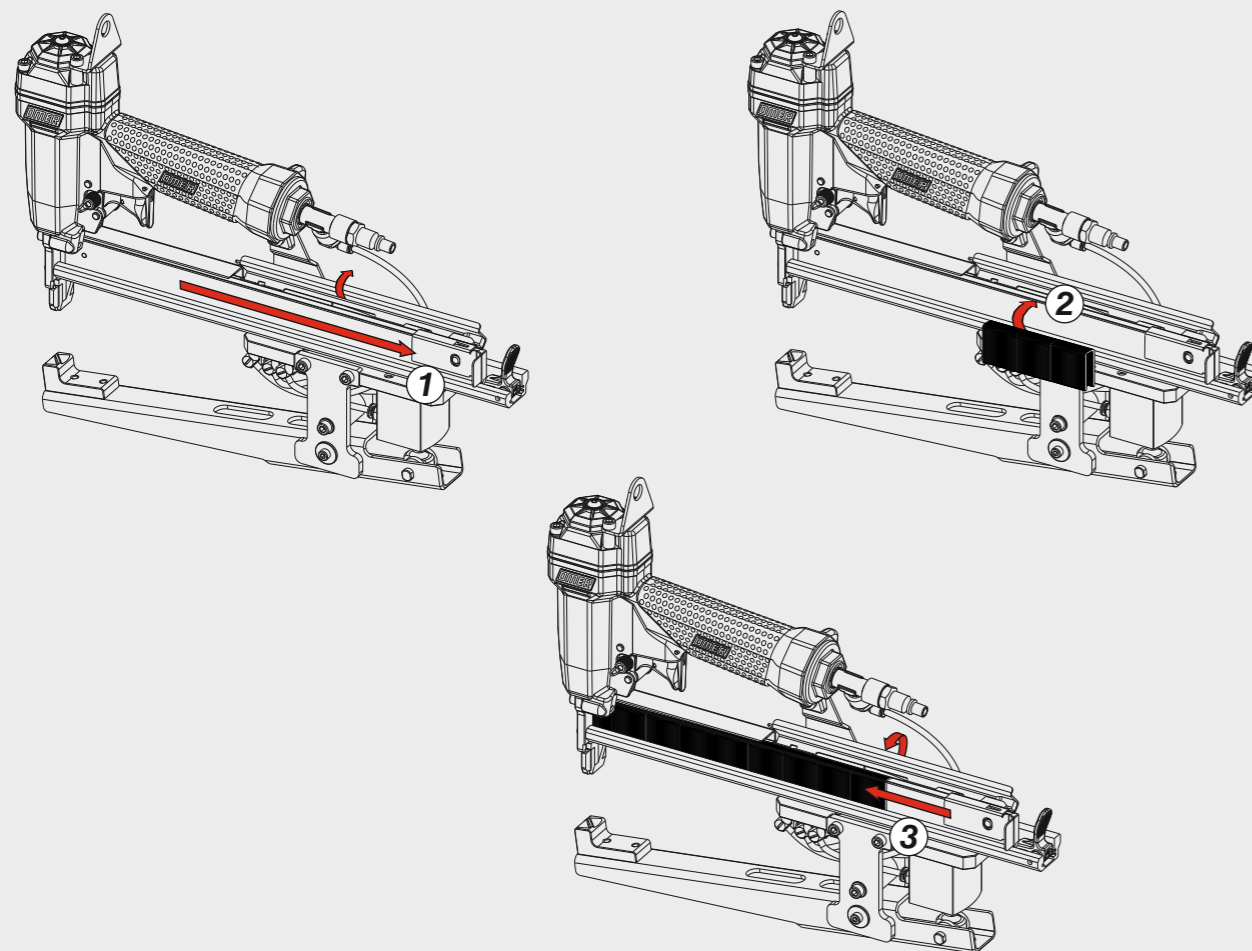
Single actuation with dual activation



Caricamento - Loading - Laden - Chargement - Carga - Γέμισμα - Carregamento - Laden - Yükleme

Caricamento da sopra

Top load magazine



Manuale d'uso, manutenzione e parti di ricambio	Parte 2
Manual for use, maintenance and spare parts	Part 2
Bedienungs- und Wartungshandbuch sowie Ersatzteilliste	Teil 2
Mode d'emploi, de maintenance et pièces de rechange	Partie 2
Manual de uso, mantenimiento y recambios	Part 2
Εγχειρίδιο χρήσης, συντήρησης και ανταλλακτικών	Μέρος 2
Manual de uso, manutenção e peças sobresselentes	Parte 2
Handleiding voor gebruik, onderhoud en wisselstukken	Deel 2
Kullanım, bakım ve yedek parça kılavuzu	Kısım 2



PL SG44 LJ

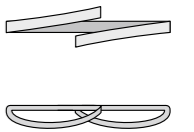
cod. 12378550



Dati tecnici	Caractéristiques techniques	Dados técnicos
Technical data	Datos técnicos	Technische gegevens
Technische Daten	Τεχνικά χαρακτηριστικά	Teknik veriler

Misure impiegabili mm	Dimensions utiles mm	Medidas utilizáveis mm	12 ÷ 25
Lengths mm	Medidas de longitud mm	Toepasbare afmetingen mm	
Verwendbare Nagellänge mm	Μήκος Αναλωσίμου - mm	Boy mm	
Capacità caricatore n° punti	Capacité chargeur n° de points	Capacidade carregador n° pontos	210
Magazine capacity	Capacidad cargador n° puntos	Capaciteit magazijn in aantal spijkers	
Magazinkapazität Nägel	Δυνατότητα γεμιστερα	Dergi kapasitesi	
Pressione d'esercizio	Pression d'exercice	Pressão de serviço	5 ÷ 7,5 bar
Operating pressure	Presión de servicio	Werkdruk	70 ÷ 105 psi
Betriebsdruck	Πίεση λειτουργίας	Çalışma basıncı	
Consumo aria litri/colpo	Consommation d'air litres/coup	Consumo ar litros/disparo	0,39
Air consumption litres/stroke	Consumo aire litros/golpe	Luchtverbruik liter/slag	
Luftverbrauch Liter/Schuss	Κατανάλωση αέρα - λίτρα/βολή	Litre/vuruş hava tüketimi	
Peso kg	Poids kg	Peso kg	2,77
Weight kg	Peso kg	Gewicht in kg	
Gewicht kg	Βάρος - kg	Ağırlık kg	
Dimensioni mm	Dimensions mm	Dimensões mm	372x52x305
Dimensions mm	Dimensiones mm	Afmetingen mm	(LxWxH)
Abmessungen mm	Διαστάσεις mm	Boyutlar mm	
UNI EN 12549 :2009 UNI EN ISO 4871 :2009			
Pressione sonora in pos. operatore	Pression sonore poste Opérateur	Pressão sonora na posição Operador	87 dB(A)
Sound pressure in operator's position	Presión sonora en la pos. del operador	Geluidsdruk op de werkplaats	(K = 4 dB)
Schalldruck am Arbeitsplatz	Ηχητική πίεση στη θέση του χειριστή	Operatör pozisyonunda ses basıncı	
UNI EN 12549 :2009 UNI EN ISO 3746 :2011 UNI EN ISO 4871 :2009			
Potenza sonora emessa	Puissance sonore émise	Potência sonora emitida	93 dB(A)
Sound power emitted	Potencia sonora emitida	Geëmitteerd geluidsvermogen	(K = 4 dB)
Emittierte Schallleistung	Εκπεμπόμενη ηχητική ισχύς	Çıkan ses gücü (ses desibeli)	
UNI CEN ISO/TS 8662-11 :2006 UNI EN ISO 5349-2 :2004 UNI EN 12096 :1999			
Emissione vibratoria sull'impugnatura	Émission vibratoire sur la prise en main	Emissão vibratória na empunhadura	4,70 m/s²
Vibratory emissions on handle	Emisión de vibraciones en la empuñadura	Trillingsemisissie op de handgreep	(K = 2 m/s ²)
Vibrationsemission am Griff	Εκπεμπόμενες δονήσεις στη λαβή	Tutamak üzerinde vibrasyon emisyonları	

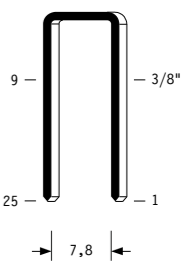
Stapling results



Tipo di punto
Type of fastener
Befestigungsmittel
Type de rivet
Tipo de punto
Τύπος αναλωσίμου
Tipo de agrafó
Type nietjes
Zimba ve çivi tipleri

SG44

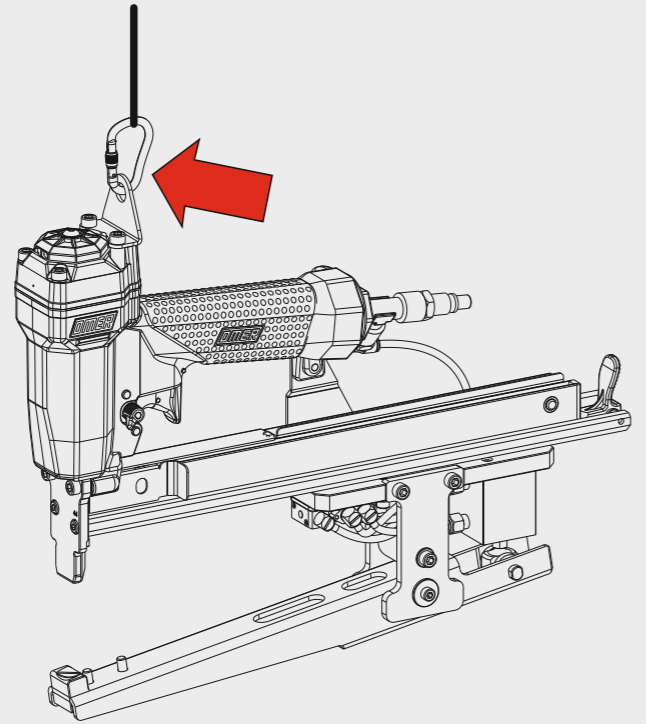
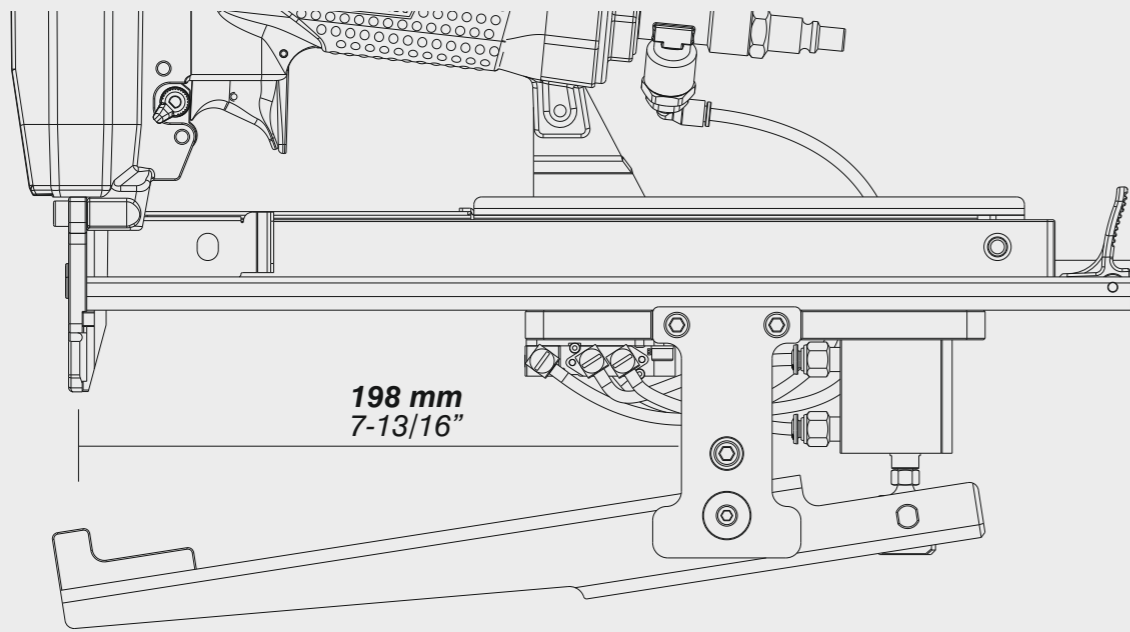
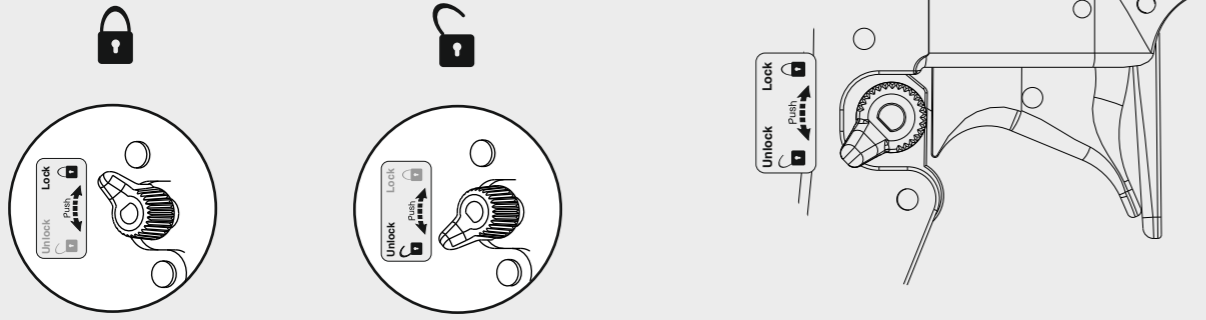
1,00x1,25



Crown: .386" (3/8")
Gauge: 18

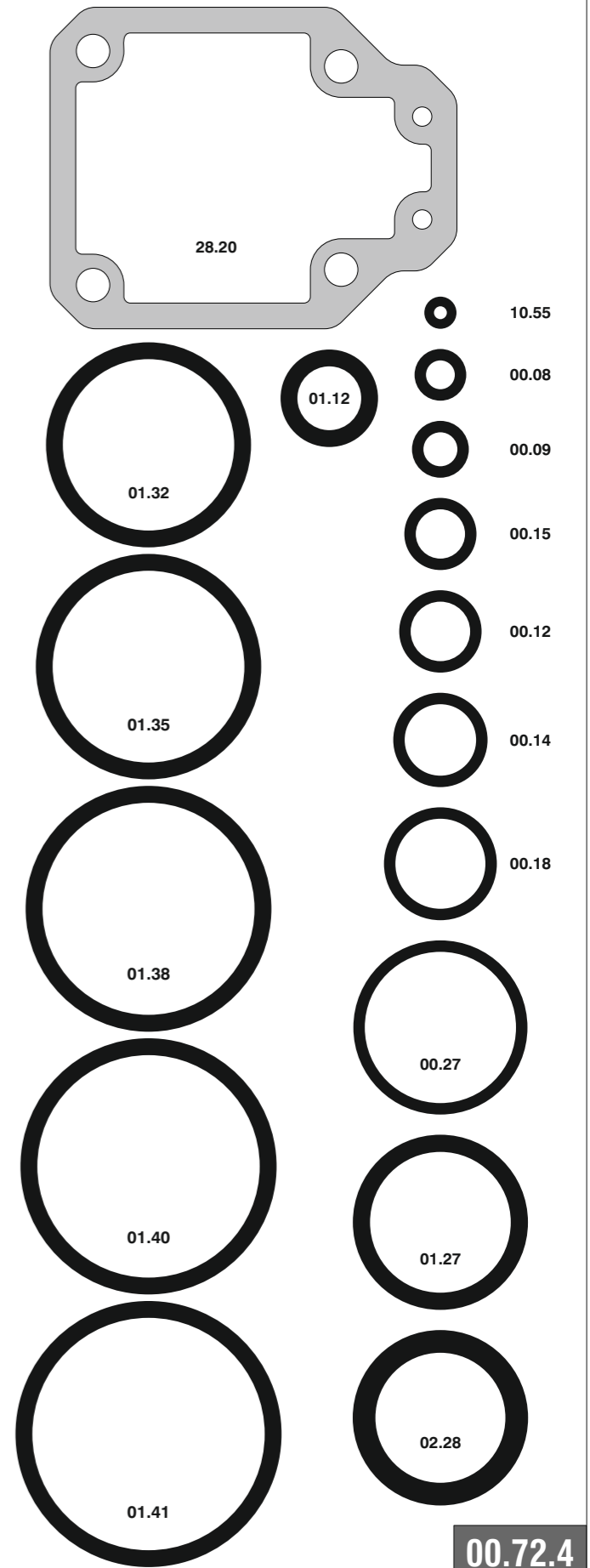
12378550_PL SG44LJ_3_rev20_29/04/2021 IV

Selettore (ON/OFF)
Selector (ON/OFF)



Cod.	Descrizione	Description
00.08	O-Ring	O-Ring
00.09	O-Ring	O-Ring
00.12	O-Ring	O-Ring
00.14	O-Ring	O-Ring
00.15	O-Ring	O-Ring
00.18	O-Ring	O-Ring
00.38	O-Ring	O-Ring
01.32	O-Ring	O-Ring
01.35	O-Ring	O-Ring
01.38	O-Ring	O-Ring
01.40	O-Ring	O-Ring
01.41	O-Ring	O-Ring
02.28	O-Ring	O-Ring
04.00	Dado	Nut
04.10	Vite	Screw
04.12	Vite	Screw
04.16	Vite	Screw
04.25	Vite	Screw
05.00	Dado	Nut
05.00.1	Dado	Nut
05.10	Vite	Screw
05.10.1	Vite	Screw
05.12	Vite	Screw
05.12.2	Vite	Screw
05.16	Vite	Screw
05.20	Vite	Screw
05.30	Vite	Screw
05.38.5	Vite	Screw
05.40	Vite	Screw
05.45	Vite	Screw
07.30	Chiave esagonale	Hex. bar wrench
07.40	Chiave esagonale	Hex. bar wrench
09.02	Anello elastico	Elastic ring
09.18	Anello elastico	Elastic ring
10.55	O-Ring	O-Ring
12.66.1	Spina	Pin
17.28	Tappo	Inlet cap
17.30.5	Raccordo Dritto	Straight Connection
17.31.8	Raccordo L	L Connection
17.31.5	Raccordo L	L Connection
17.37.5	Silenziatore	Silencer
17.38.4	Riduzione	Reduction
17.39.7	Raccordo T	T Connection
17.41.4	Raccordo	Connection
18.55	Valvola 5/2	5/2 Valve
21.26-3	Corpo	Body
22.21	Testa	Head
25.40	Deflettore	Exhaust deflector
25.41	Silenziatore	Silencer
26.21	Cilindro	Cylinder
28.20	Guarnizione testa	Head gasket
32.22	Ammortizzatore	Bumper
39.40	Guarnizione scarico	Exhaust seal
40.22	Valvola completa	Valve ass'y
43.11	Rondella	Washer
43.16.4	Rondella	Washer
44.22	Guarnizione	Gasket
45.20	Anello valvola	Ring
50.41	Pulsante completo	Trigger valve ass'y
51.41	Boccola pulsante	Trigger valve housing
53.41	Pistone servovalvola	Valve piston
54.41	Pulsante	Trigger
55.41	Raccordo pulsante	Bush
56.70	Cerniera	Hinge
64.20	Carter	Hold Down
64.21.2	Carter Mobile	Movable Hold Down
66.24.2	Distanziale	Spacer
67.74	Distanziale	Spacer
67.75	Distanziale	Spacer
69.77.2	Ribaditore	Anvil
69.79	Ganascia	Jaw
70.26	Supporto	Support
70.30	Distanziale	Spacer
70.78.2	Piastra	Plate
71.23.1	Reggicaricatore	Support
73.00	Perno	Pin
74.04	Staffa	Stirrup
76.05	Perno	Pin
76.26	Perno carter	Pin
76.72	Perno	Pin
77.44	Guida sicura	Safety guide
80.09	Grilletto	Trigger
81.40.2	Grilletto	Trigger
81.42	Controgrilletto	Safety trigger
88.79.2	Supporto	Support
90.10	Molla	Spring
90.22.1	Molla	Spring
91.05	Molla	Spring
91.22	Molla	Spring
91.73	Molla	Spring
92.01X	Molla	Spring
93.07	Molla	Spring
21.23.44	Battente	Driver
50.23.44	Caricatore	Magazine
60.23.44	Carrello	Slider
71.23.44	Spingipunto	Pusher
82.20.40	Controtestina	Nose
91.23.44	Testina	Nose plate
D01	Bocchetta olio	Oiler

Guarnizioni - O-Rings - Dichtungen - Joints toriques - Junta - Δακτύλιος στεγανοποίησης - Vedantes - O-ringen - Contalar



Disincorporamento - Jam clearing - Staubeseitigung - Décoincement - Desatascamiento - Απεμπλοκή
 Desencravamento - Deblokkering bij vastlopen - Sıkışma giderme

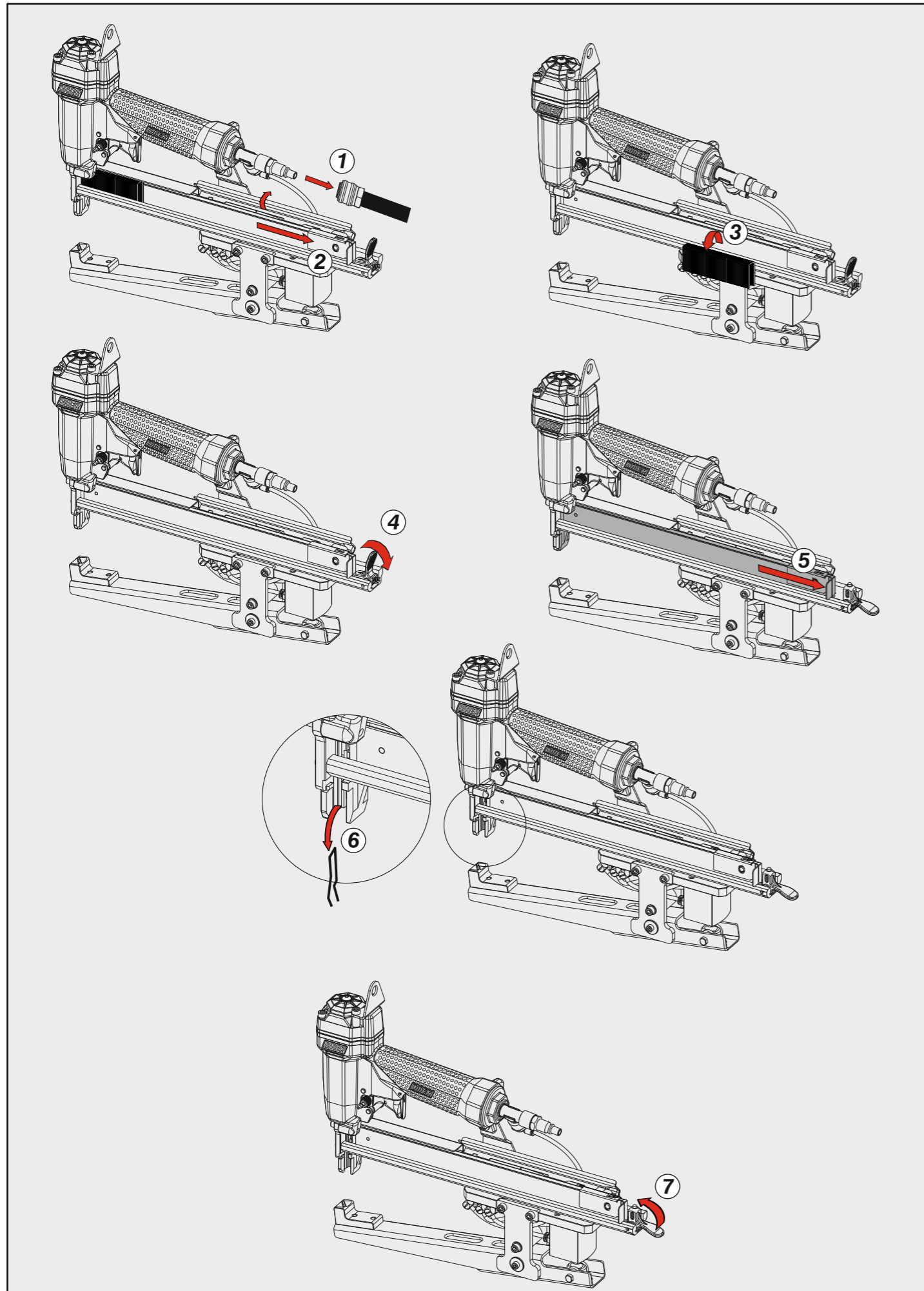
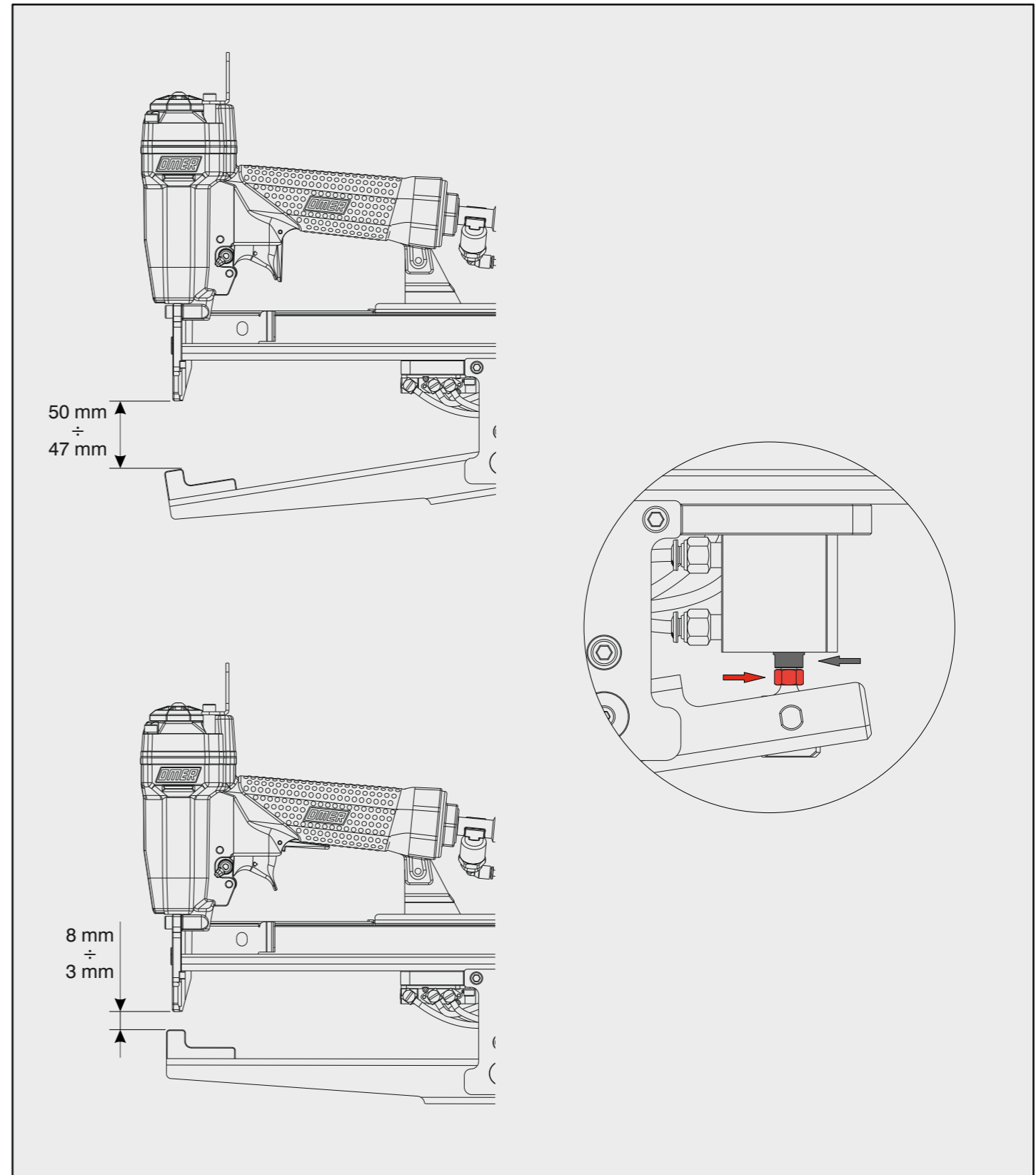


Tabella configurazioni - Configurations Table



Dotazioni - Equipment - Ausstattung - Outillage - Dotaciones - Εξοπλισμός
 Dotações - Uitrusting - Donanımlar

