



**Manuale d'uso, manutenzione e parti di ricambio**  
**Use, maintenance and spare parts manual**  
**Gebrauchsanweisung, Instandhaltungsrichtlinien und Ersatzteile**  
**Manuel d'utilisation, entretien et pièces de rechange**  
**Manual de uso, mantenimiento y repuestos**

**Parte 2**  
**Part 2**  
**Teil 2**  
**Partie 2**  
**Part 2**

**Manual de utilização, manutenção e partes sobresselentes**  
**Handleiding voor gebruik, onderhoud en reservedelslste**  
**Brugsanvisning, vedligeholdelse og reservedelslste**

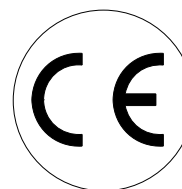
**Parte 2**  
**Deel 2**  
**Del 2**



# M1.40 CL

cod. 1718010

1718010\_M140CL\_1 130300

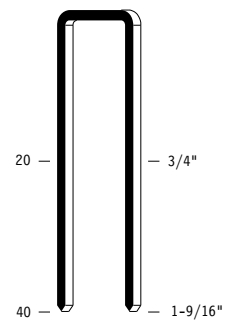


| Dati tecnici<br>Technical data<br>Technische daten   | Données techniques<br>Datos tècnicos   | Dados tècnicos<br>Technischegegevens<br>Tecniske data  |
|--|--|--|
| <b>Misure impiegabili mm</b><br>Usable lengths mm<br>Gebrauchliche Längen mm   | Mesures utilisable mm<br>Medidas que se pueden emplear mm  | Medidas que se podem utilizar mm<br>Te gebruiken engtes in mm<br>Brugbare laengder i mm  |
| <b>Capacità caricatore n° punti</b><br>Magazine capacity No. of fasteners<br>Magazinkapazität Nägel  | Capacité chargeur n° de points<br>Capacidad cargador n° puntos   | Capacitade carregador n° pontos<br>Capaciteit magazijn in aantal spijkers<br>Kapacitet af magasin antal klemme   |
| <b>Pressione d'esercizio</b><br>Working pressure<br>Betriebsdruck  | Pression de fonctionnement<br>Presión de trabajo   | Pressao de trabalho<br>Werkdruk<br>Arbejds tryk bar  |
| <b>Consumo aria litri/colpo</b><br>Air consumption litres/shot<br>Luftverbrauch Liter/Schlag   | Consommation air litre/coup<br>Consumo aire-litros/golpe   | Consumo ar litro/golpe<br>Luchtverbruik liter/schot<br>Luftforbrug liter/skud  |
| <b>Peso kg</b><br>Weight kg<br>Gewicht kg  | Poids kg<br>Peso kg  | Peso kg<br>Gewicht in kg<br>Vaegt kg   |
| <b>Dimensioni (AxBxH) mm</b><br>Dimensions mm<br>Größe mm  | Dimension mm<br>Dimensiones mm   | Dimencoes mm<br>Afmetingen in mm<br>Dimensioner mm   |
| <b>ISO 11201</b><br><b>Pressione sonora in pos. operatore</b><br>Sound pressure at the workstation<br>Lärmintensität am Arbeitsplatz   | ISO 11201<br>Pression acoustique près de l'opérateur<br>Presión sonora en posición encargado   | ISO 11201<br>Intensidade sonora perto do operador<br>Geluidssterkte op de werkplek<br>Lydstyrke på operatorposten  |
| <b>ISO 3744</b><br><b>Potenza sonora emessa</b><br>Emitted sound power<br>Ausgestrahlte Lärmintensität   | ISO 3744<br>Puissance acoustique émise<br>Potencia sonora emitida  | ISO 3744<br>Potência sonora emitida<br>Uitgestraalde geluidssterkte<br>Udsendt lydstryrke  |
| <b>ISO 5349-86</b><br><b>Valore medio ponderato di vibrazione sull'impugnatura max.33 colpi</b><br>Weighted mean value of vibration on the grip max.33 shots<br>Mitteler Vibrationswert, am Griff gemessen max.33 Schäge | ISO 5349-86<br>Valeur moyenne pondérée de vibration mesurée sur la poignée max.33 coups<br>Valor medio ponderado de vibracion medida en la empunadura max.33 golph | ISO 5349-86<br>Valor medio ponderado de vibracao medida no punho max.33 golpes<br>Gewogen gemiddelde vibratiewaarde max.33 schot<br>Middelvaerdi af vibrationer pa handtaget max.33 skud |

**Tipo di punto**  
Type of fastener  
Befestigungselement  
Type d'agrafe  
Tipo de punto  
Tipo de ponto  
Type nietjes  
Tilspændingstype

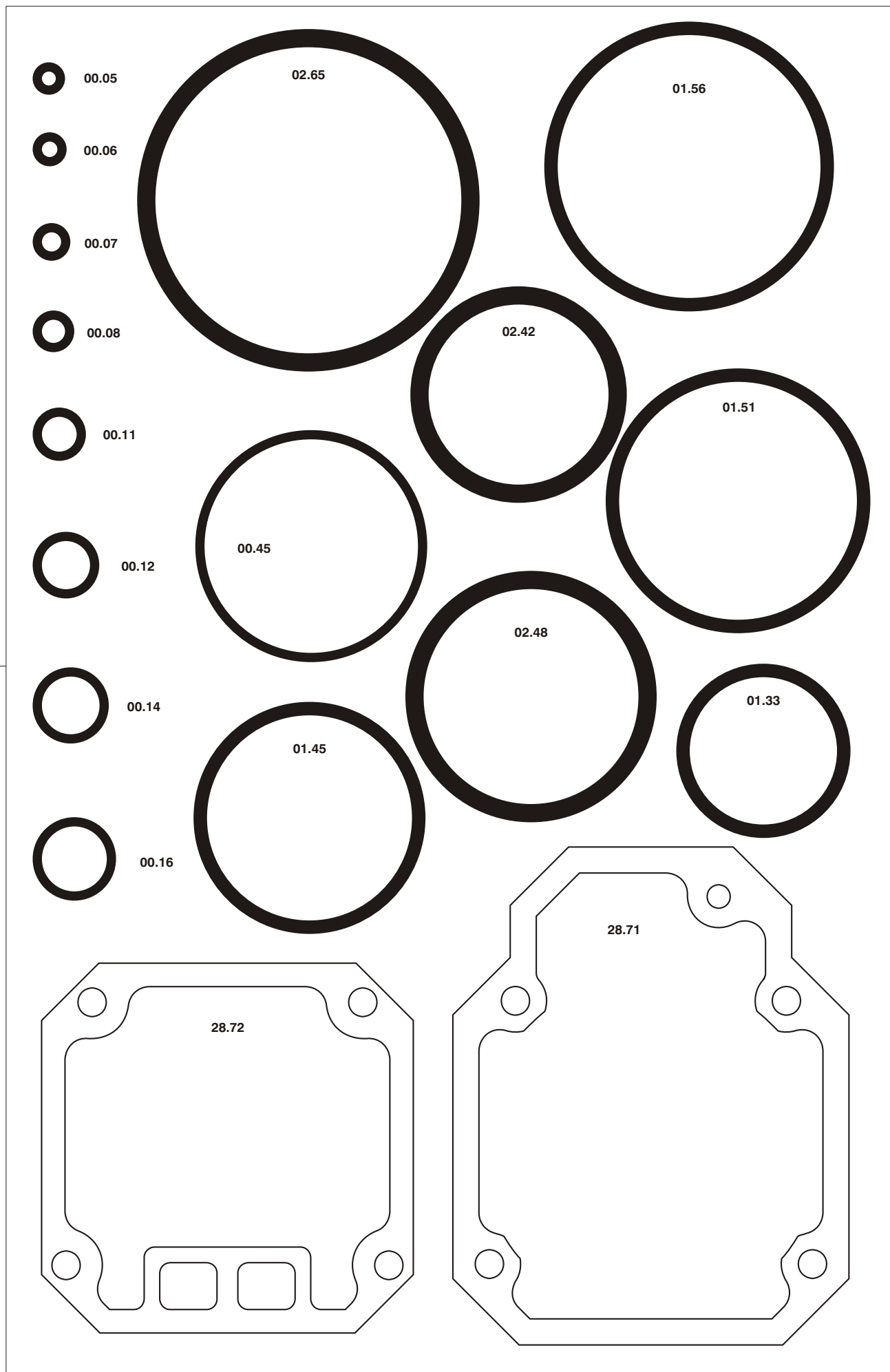
**M1**

1,25x1,45



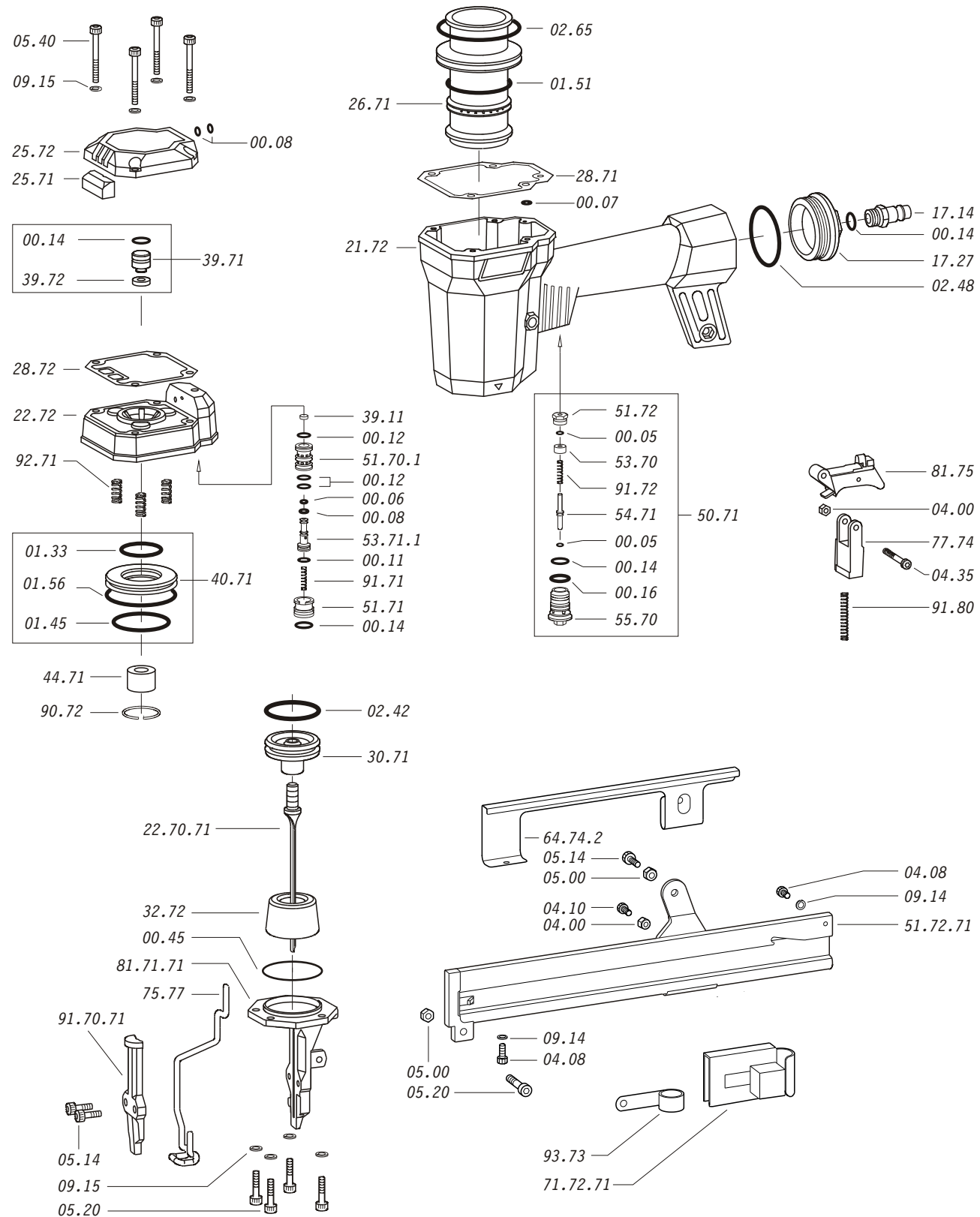
7,8

Crown: 13/32"  
 Thickness: 0.050"  
 Width: 0.057"  
 Gauge: 17

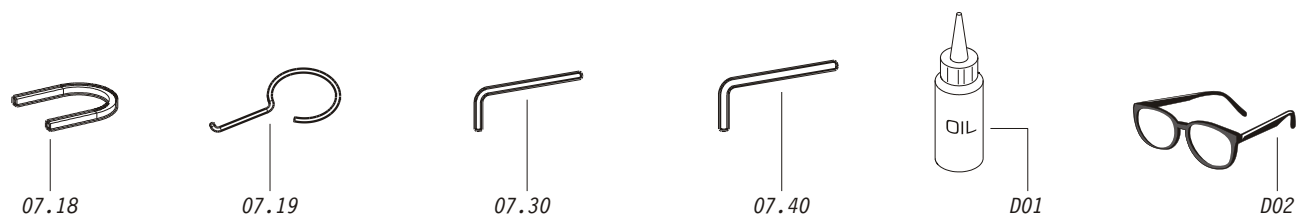


00.77.1

Parti di ricambio - Spare parts - Ersatzteile - Pièces de rechange - Piezas de repuesto  
- Partes sobresselentes - Tabel te raadplegen - Reservededele

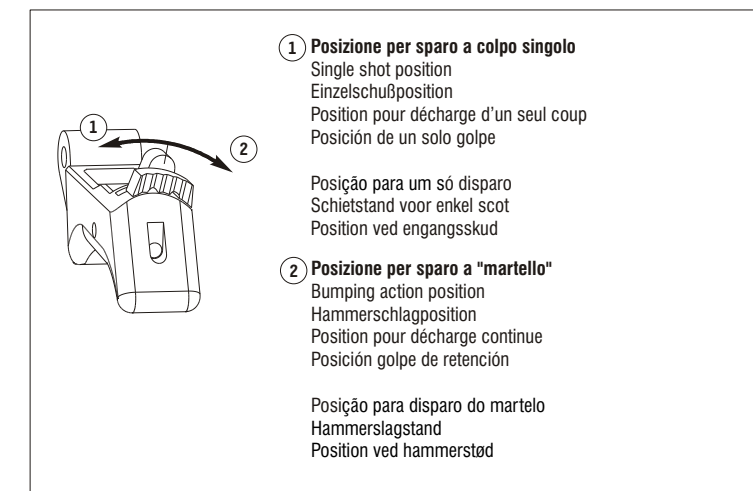
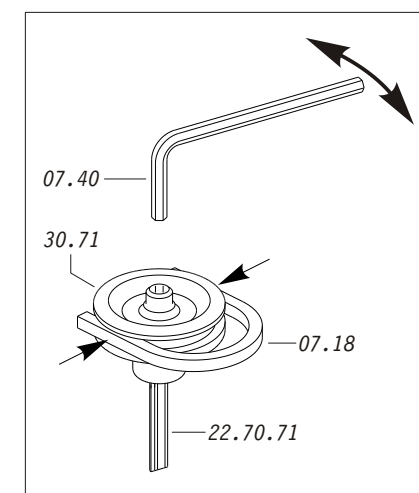
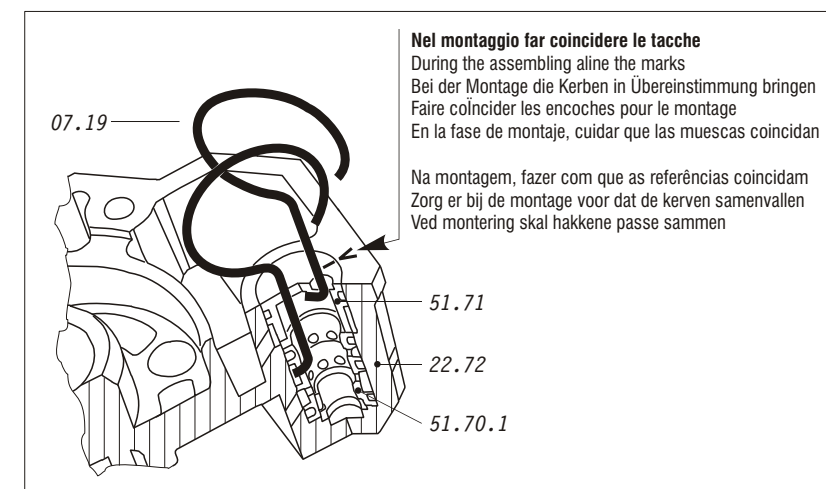


Dotazioni - Equipment - Ausrüstung - Équipements - Equipamiento -  
Equipamento - Uitrusting - Udstyr



Parti di ricambio - Spare parts - Ersatzteile - Pièces de rechange - Piezas de repuesto  
- Partes sobresselentes - Tabel te raadplegen - Reservededele

| Cod.     | Descrizione                   | Description                  |
|----------|-------------------------------|------------------------------|
| 00.05    | O-Ring                        | O-Ring                       |
| 00.06    | O-Ring                        | O-Ring                       |
| 00.07    | O-Ring                        | O-Ring                       |
| 00.08    | O-Ring                        | O-Ring                       |
| 00.11    | O-Ring                        | O-Ring                       |
| 00.12    | O-Ring                        | O-Ring                       |
| 00.14    | O-Ring                        | O-Ring                       |
| 00.16    | O-Ring                        | O-Ring                       |
| 00.45    | O-Ring                        | O-Ring                       |
| 01.33    | O-Ring                        | O-Ring                       |
| 01.45    | O-Ring                        | O-Ring                       |
| 01.51    | O-Ring                        | O-Ring                       |
| 01.56    | O-Ring                        | O-Ring                       |
| 02.42    | O-Ring                        | O-Ring                       |
| 02.48    | O-Ring                        | O-Ring                       |
| 02.65    | O-Ring                        | O-Ring                       |
| 04.00    | Dado                          | Nut                          |
| 04.08    | Vite                          | Screw                        |
| 04.10    | Vite                          | Screw                        |
| 04.35    | Vite                          | Screw                        |
| 05.00    | Dado                          | Nut                          |
| 05.14    | Vite                          | Screw                        |
| 05.20    | Vite                          | Screw                        |
| 05.40    | Vite                          | Screw                        |
| 07.18    | Chiave pistone                | Piston wrench                |
| 07.19    | Estrattore                    | Extractor                    |
| 07.30    | Chiave esagonale              | Hex. bar wrench              |
| 07.40    | Chiave esagonale              | Hex. bar wrench              |
| 09.14    | Rondella                      | Washer                       |
| 09.15    | Rondella                      | Washer                       |
| 17.14    | Raccordo 1/4"                 | Air plug 1/4"                |
| 17.27    | Tappo                         | Inlet cap                    |
| 21.72    | Corpo (specificare il colore) | Body (to specify the colour) |
| 22.72    | Testa                         | Head                         |
| 25.71    | Silenziatore                  | Silencer                     |
| 25.72    | Deflettore scarico            | Exhaust deflector            |
| 26.71    | Cilindro                      | Cylinder                     |
| 28.71    | Guarnizione testa             | Head gasket                  |
| 28.72    | Guarnizione testa             | Head gasket                  |
| 30.71    | Pistone                       | Piston                       |
| 32.72    | Ammortizzatore                | Bumper                       |
| 39.11    | Guarnizione servovalvola      | Servo valve gasket           |
| 39.71    | Valvola scarico completa      | Exhaust valve assembled      |
| 39.72    | Guarnizione valvola scarico   | Exhaust valve gasket         |
| 40.71    | Valvola completa              | Valve assembled              |
| 44.71    | Ammortizzatore sup.           | Upper bumper                 |
| 50.71    | Pulsante completo             | Trigger valve assembled      |
| 51.70.1  | Cilindro servovalvola         | Servo valve cylinder         |
| 51.71    | Boccola servovalvola          | Servo valve bushing          |
| 51.72    | Premistoppa                   | Stuffing box                 |
| 53.70    | Distanziale                   | Spacer                       |
| 53.71.1  | Pistone servovalvola          | Servo valve piston           |
| 54.71    | Pulsante                      | Trigger valve                |
| 55.70    | Raccordo                      | Trigger valve bush           |
| 64.74.2  | Carter                        | Hold down                    |
| 75.77    | Sicura                        | Safety                       |
| 77.74    | Guida sicura                  | Safety guide                 |
| 81.75    | Grilletto comando completo    | Trigger assembled            |
| 90.72    | Molla                         | Spring                       |
| 91.71    | Molla                         | Spring                       |
| 91.72    | Molla                         | Spring                       |
| 91.80    | Molla                         | Spring                       |
| 92.71    | Molla                         | Spring                       |
| 93.73    | Molla                         | Spring                       |
| 22.70.71 | Battente                      | Driver                       |
| 51.72.71 | Caricatore                    | Magazine                     |
| 71.72.71 | Spingipunto                   | Pusher                       |
| 81.71.71 | Controtestina                 | Nose                         |
| 91.70.71 | Testina                       | Nose plate                   |
| D01      | Bocchetta olio                | Oiler                        |
| D02      | Occhiali protettivi           | Protective goggles           |



1718010\_M1+40CL\_1 130300

M1.40 CL

Cod. 1718010

Indice di modifica  
Upgrade number

1

1003134