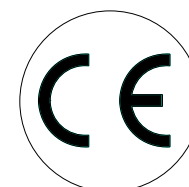




192HR23MA1_HR23M8_280311 IV



**Manuale d'uso, manutenzione
e parti di ricambio Parte 2**
Use, maintenance
and spare parts manual Part.2

HR23 M8

cod. 192HR23MA1

Indice di modifica
Upgrade number

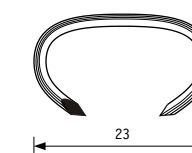
A1

Misure impiegabili mm (inch) Usable lengths mm (inch)	23 (7/8")
Capacità caricatore n° punti Magazine capacity No. of fasteners	130
Pressione d'esercizio bar (psi) Working pressure bar (psi)	5 ÷ 7 (70 ÷ 100)
Consumo aria litri/colpo a 6 bar Air consumption litres/shot at 6 bar	1,50
Peso kg Weight kg	1,45
Dimensioni (AxBxH) mm Dimensions mm	198x91x354
EN 12549:1999 ISO 11201:1995 Pressione sonora in posizione operatore Max A-Weighted pressure level at operator's position	84 dBA
EN 12549:1999 ISO 3744:1994 Potenza sonora emessa Max A-Weighted sound power level	94 dBA
ISO 8662-11:1999 Vibrazione Vibration	< 2,5 m/s²

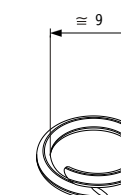
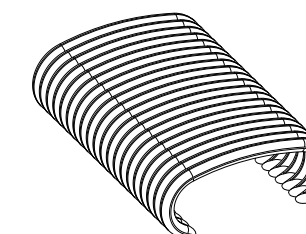
Tipo di punto
Type of fastener

HR23

Ø 1,80



Gauge: 15



omer s.p.a.

Via Foresto, 42 - 31058 SUSEGANA (TV) ITALY

Tel. 0438 455 318

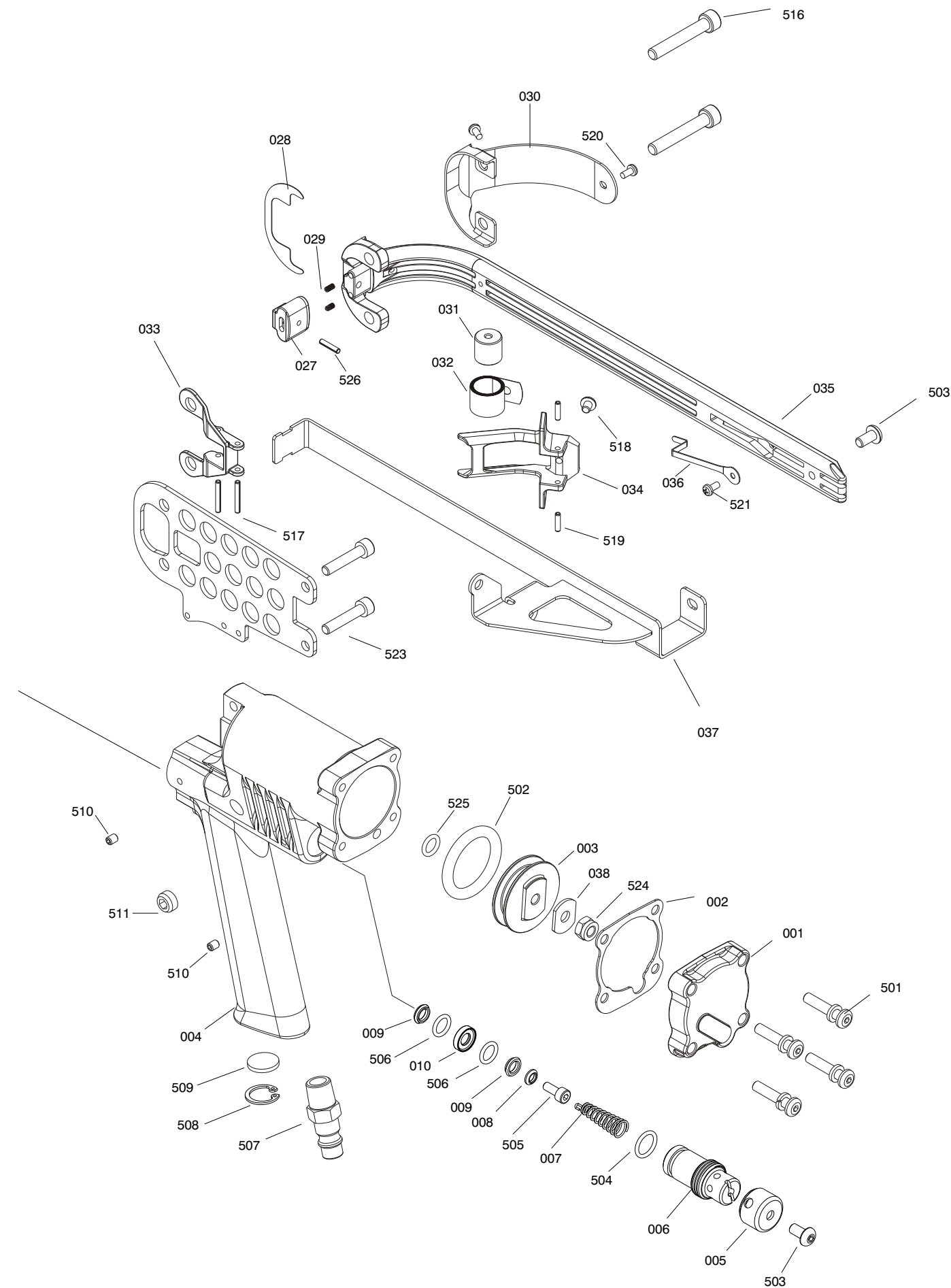
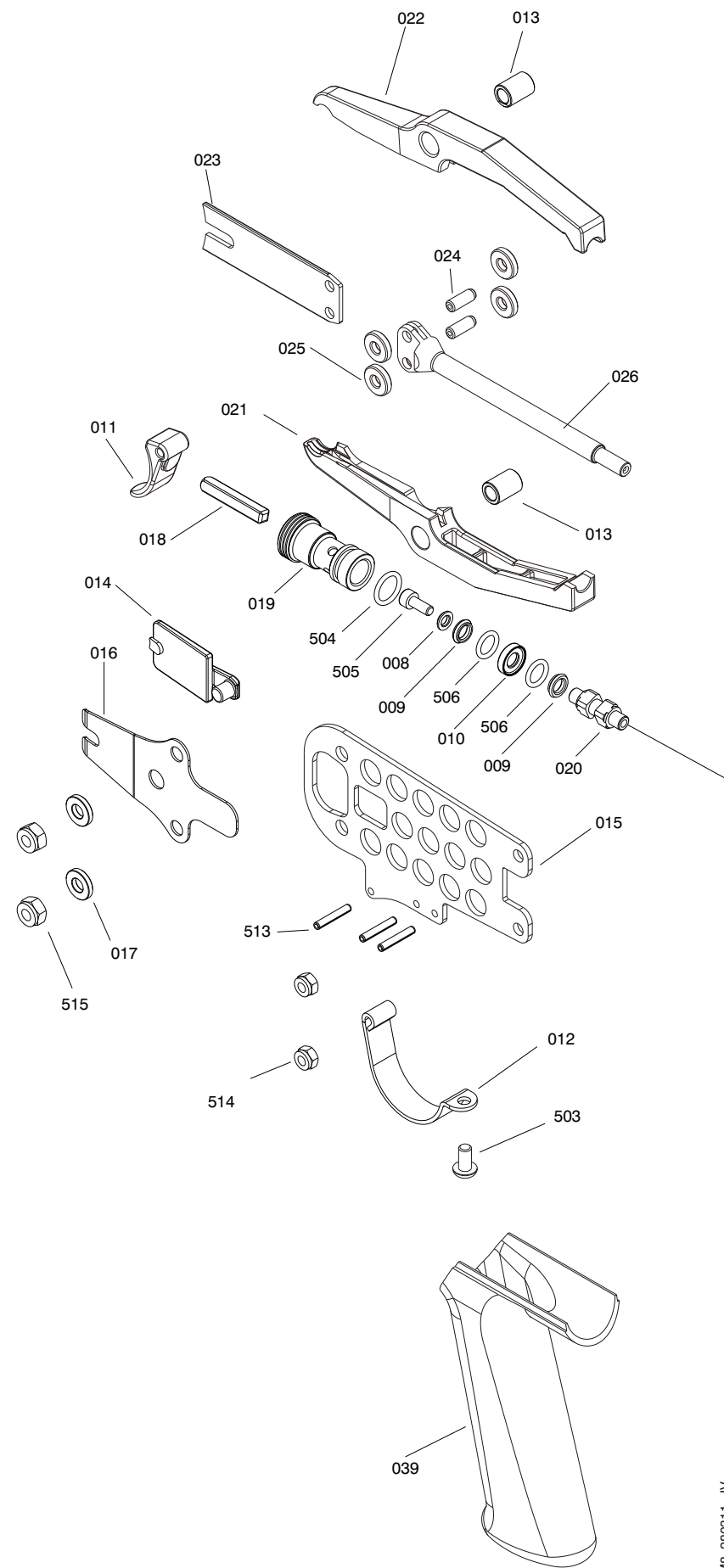
Fax 0438 455 530

e-mail: omer@omer.it

www.omer.it

Ref. No. Part No. Description

001	2HR23M-A001	Cap
002	2HR23M-A002	Packing
003	2HR23M-A003	Piston
004	2HR23M-A004	Body
005	2HR23M-A005	Deflector
006	2HR23M-A006	Seat Rear Valve
007	2HR23M-A007	Spring
008	2HR23M-A008	Washer
009	2HR23M-A009	Support, O-Ring End
010	2HR23M-A010	Spring
011	2HR23M-A011	Trigger
012	2HR23M-A012	Guard, Trigger
013	2HR23M-A013	Bushing
014	2HR23M-A014	Latch
015	2HR23M-A015	Side Plate
016	2HR23M-A016	Spring Latch
017	2HR23M-A017	Washer
018	2HR23M-A018	Stem, Throttle
019	2HR23M-A019	Seat, Front Valve
020	2HR23M-A020	Spacer
021	2HR23M-A021	Jaw, Lower
022	2HR23M-A022	Jaw, Upper
023	2HR23M-A023	Blade
024	2HR23M-A024	Pin
025	2HR23M-A025	Roller
026	2HR23M-A026	Piston Rod
027	2HR23M-A027	Shoe Magazine
028	2HR23M-A028	Shim
029	2HR23M-A029	Spring
030	2HR23M-A030	Guard
031	2HR23M-A031	Roller
032	2HR23M-A032	Spring
033	2HR23M-A033	Bracket
034	2HR23M-A034	Pusher
035	2HR23M-A035	Magazine Body
036	2HR23M-A036	Clip
037	2HR23M-A037	Rail
038	2HR23M-A038	Washer
039	2HR23M-A039	Grip
501	2HR23M-A501	Hex. Soc. Hd. Cap Screw
502	2HR23M-A502	O-Ring
503	2HR23M-A503	Hex. Soc. Hd. Cap Screw
504	2HR23M-A504	O-Ring
505	2HR23M-A505	Hex. Soc. Hd. Bolt
506	2HR23M-A506	O-Ring
507	2HR23M-A507	Air Plug
508	2HR23M-A508	C-Ring
509	2HR23M-A509	Silencer
510	2HR23M-A510	Hex. Soc. HdLess Bolt
511	2HR23M-A511	Hex. Soc. HdLess Bolt
513	2HR23M-A513	Spring Pin
514	2HR23M-A514	Lock Nut
515	2HR23M-A515	Lock Nut
516	2HR23M-A516	Hex. Soc. Hd. Bolt
517	2HR23M-A517	Spring Pin
518	2HR23M-A518	Hex. Soc. Hd. Cap Screw
519	2HR23M-A519	Spring Pin
520	2HR23M-A520	Hex. Soc. Hd. Cap Screw
521	2HR23M-A521	Hex. Soc. Hd. Cap Screw
523	2HR23M-A523	Hex. Soc. Hd. Bolt
524	2HR23M-A524	Lock Nut
525	2HR23M-A525	O-Ring
526	2HR23M-A526	Spring Pin



192HR23MA1_HR23M8_280311 IV

Parti di ricambio - Spare parts

HR23 M8

Cod. 192HR23MA1

Indice di modifica
Upgrade number

A1

870316