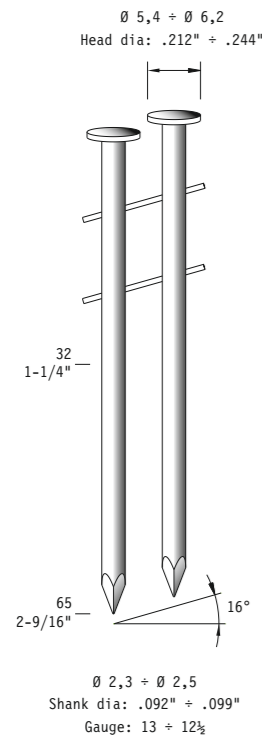
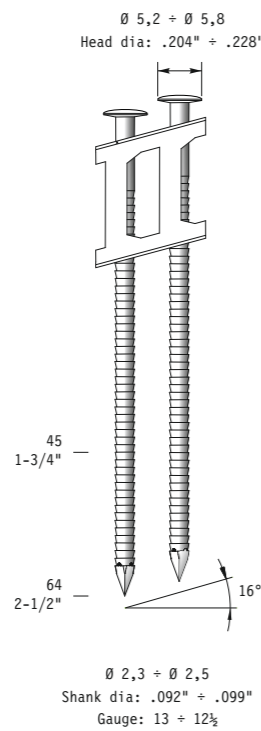


Tipo di punto - Type of fastener - Befestigungsmittel - Type de rivet - Tipo de punto
 Τύπος αναλωσίμου - Tipo de agrafa - Type nietjes - Zimba ve çivi tipleri - Typ av stygn

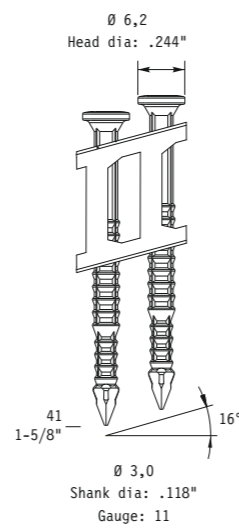
CNW23 CNW25



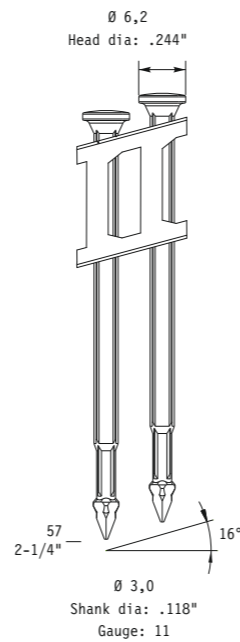
CNP23 CNP25



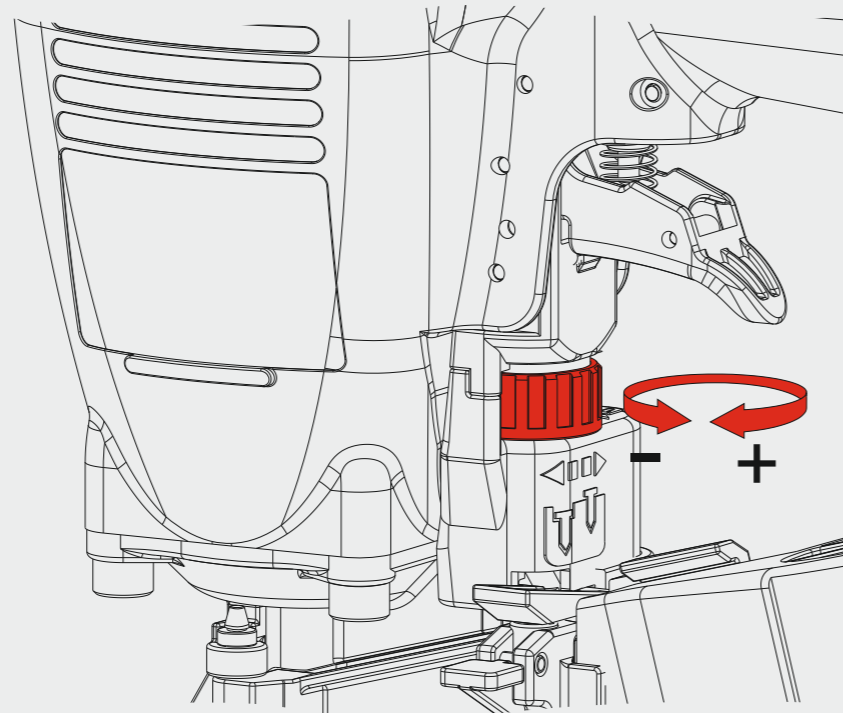
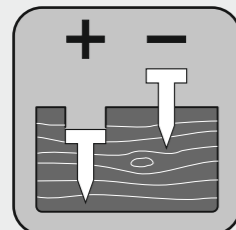
5D



8D



Regolazione di profondità - Depth adjustment - Tiefeneinstellung - Réglage des dimensions - Réglage des dimensions
 Ρύθμιση βάθους - Regulação de profundidade - Diepte afstelling - Derinlik ayarı - Djupjustering



Manuale d'uso, manutenzione e parti di ricambio **Parte 2**
Manual for use, maintenance and spare parts **Part 2**
Bedienungs- und Wartungshandbuch sowie Ersatzteilliste **Teil 2**
Mode d'emploi, de maintenance et pièces de rechange **Partie 2**
Manual de uso, mantenimiento y recambios **Part 2**
Εγχειρίδιο χρήσης, συντήρησης και ανταλλακτικών **Μέρος 2**
Manual de uso, manutenção e peças sobresselentes **Parte 2**
Handleiding voor gebruik, onderhoud en wisselstukken **Deel 2**
Kullanım, bakım ve yedek parça kılavuzu **Kısım 2**
Användar-, underhålls- och reservdelshandbok **Del 2**



CN28.65

cod. 195MCN2865



Warning: Please read the instructions and warnings for this tool carefully before use. Failure to do so could lead to serious injury.

Dati tecnici
 Technical data
 Technische Daten
 Tekniska data

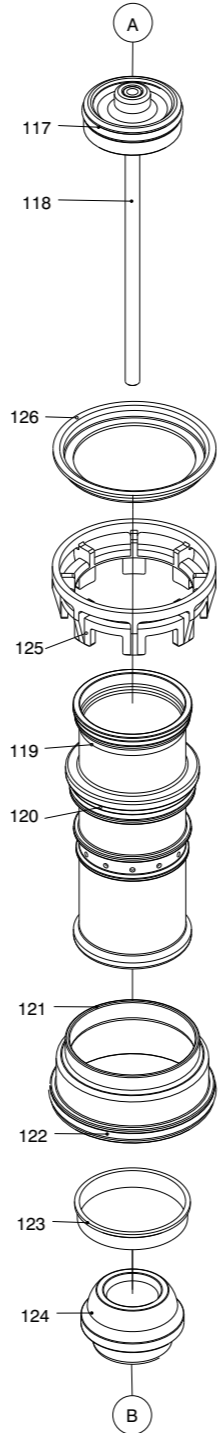
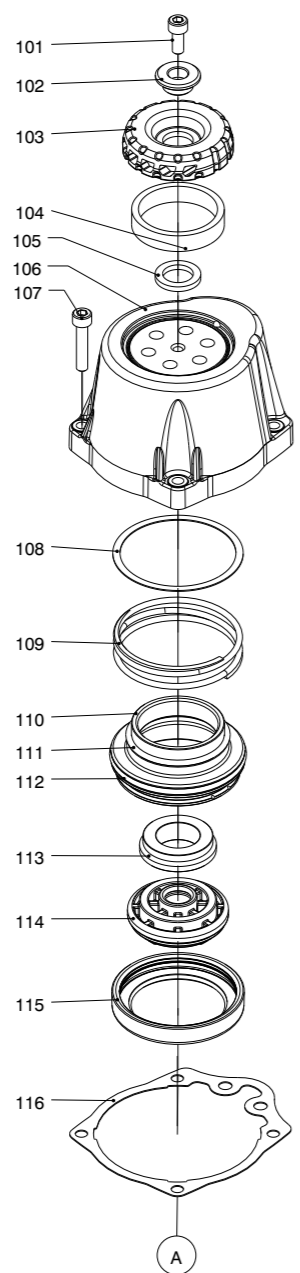
Caractéristiques techniques
 Datos técnicos
 Τεχνικά χαρακτηριστικά

Dados técnicos
 Technische gegevens
 Teknik veriler

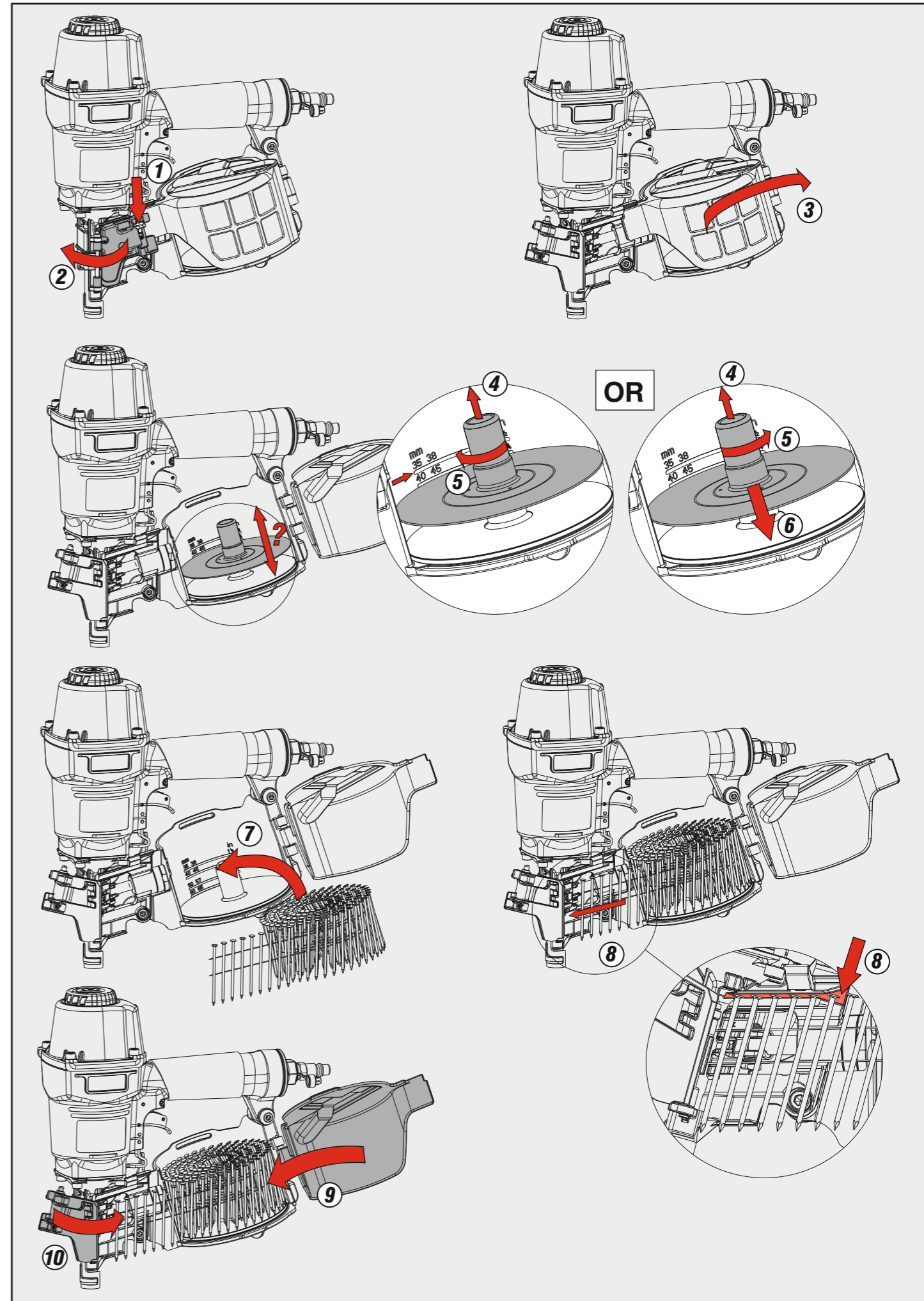
Misure impiegabili Lengths Verwendbare Nagellänge Dimensioner som kan användas	Dimensions utiles Medidas de longitud Μήκος Αναλωσίμου	Medidas utilizáveis Toepasbare afmetingen Boy	mm inch	32 + 65 1-1/4" + 2-9/16"
Capacità caricatore n° punti Magazine capacity Magazinkapazität: Nägel Magasinkapacitet: Antal punkter	Capacité chargeur n° de points Capacidad cargador n° puntos Δυνατότητα γεμιστέρα	Capacidade carregador n° pontos Capaciteit magazijn in aantal spijkers Dergi kapasitesi		175 + 300
Pressione d'esercizio Operating pressure Betriebsdruck Drifttryck	Pression d'exercice Presión de servicio Πίεση λειτουργίας	Pressão de serviço Werkdruk Çalışma basıncı	bar psi	5 + 8 70 + 115
Consumo aria Air consumption Luftverbrauch Luftförbrukning	Consommation d'air Consumo aire Κατανάλωση αέρα	Consumo ar Luchtverbruik Hava tüketimi	lt/colpo ft³/cycle	2,97 0,105
Peso Weight Gewicht Vikt	Poids Peso Βάρος	Peso Gewicht Ağırlık	kg lbs	2,05 4,50
Dimensioni Dimensions Abmessungen Dimensioner (AxBxH)	Dimensions Dimensiones Διαστάσεις	Dimensões Afmetingen Boyutlar	mm inch	310x128x326 12-3/16"x5-1/16"x12-7/8" (LxWxH)
EN 12549 :2009 EN ISO 4871 :2009 Pressione sonora in pos. operatore Sound pressure in operator's position Schalldruck am Arbeitsplatz Ljudtryck på operatörsplatsen	Pression sonore poste Opérateur Presión sonora en la pos. del operador Ηχητική πίεση στη θέση του χειριστή	Pressão sonora na posição Operador Geluidsdruk op de werkplaats Operatör pozisyonunda ses basıncı	dB(A)	90,5 (K = 4 dB)
EN 12549 :2009 EN ISO 3746 :2011 EN ISO 4871 :2009 Potenza sonora emessa Sound power emitted Emitierte Schalleistung Avgiven ljudeffekt	Puissance sonore émise Potencia sonora emitida Εκπεμπόμενη ηχητική ισχύς	Potência sonora emitida Geëmitteerd geluidsvermogen Çıkan ses gücü (ses desibeli)	dB(A)	98,2 (K = 4 dB)
CEN ISO/TS 8662-11 :2006 EN ISO 5349-2 :2004 EN 12096 :1999 Emissione vibratoria sull'impugnatura Vibratory emissions on handle Emisión de vibraciones en la empuñadura Vibrationsemission am Griff Vibrationsemission på handtaget	Émission vibratoire sur la prise en main Emisión de vibraciones en la empuñadura Εκπεμπόμενες δονήσεις στη λαβή	Emissão vibratória na empunhadura Trillingsemissie op de handgreep Tutamak üzerinde vibrasyon emisyonları	m/s²	4,23 (K = 2 m/s²)

195MCN2865_CN2865_A1_rev01_27/01/2023_DV

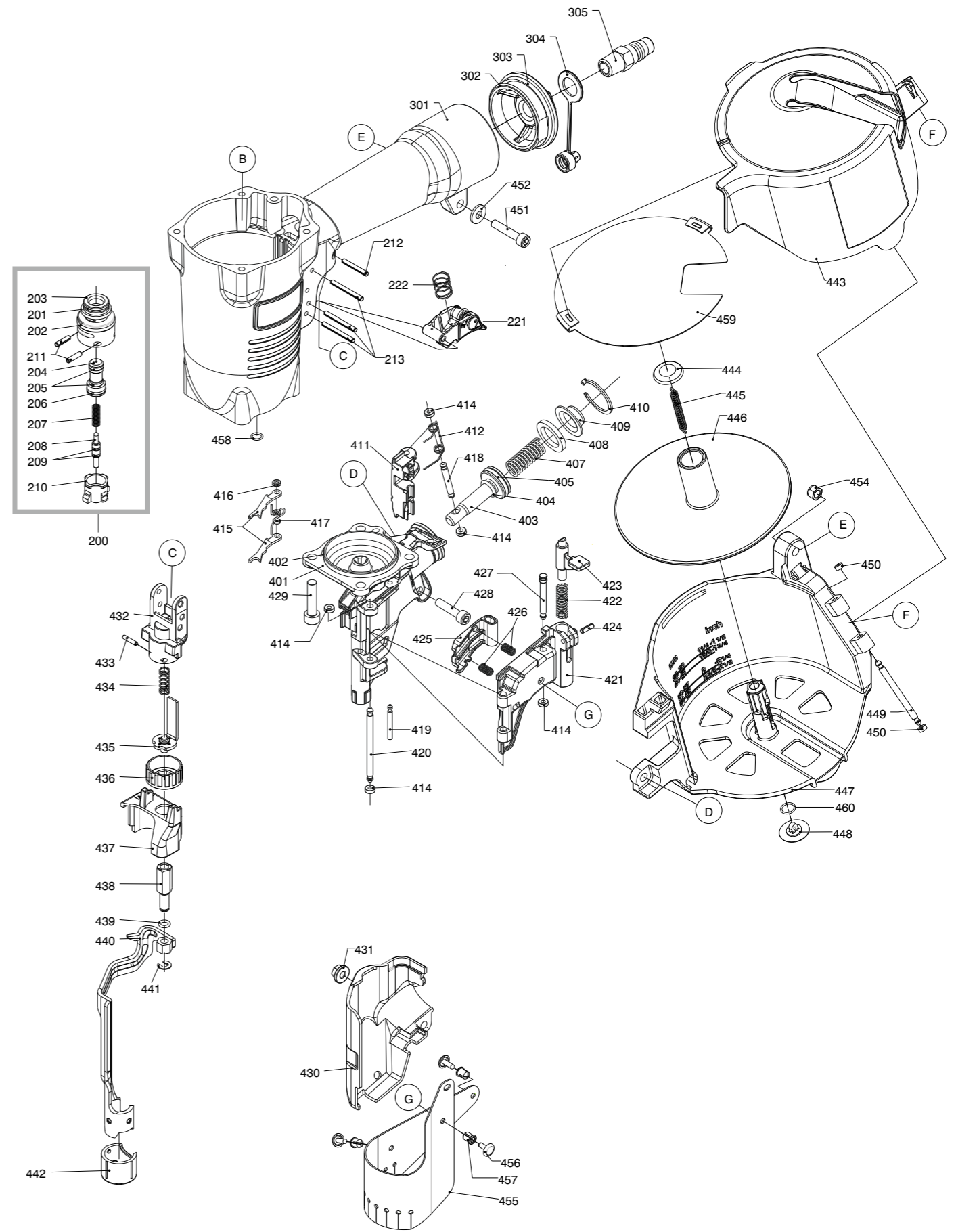
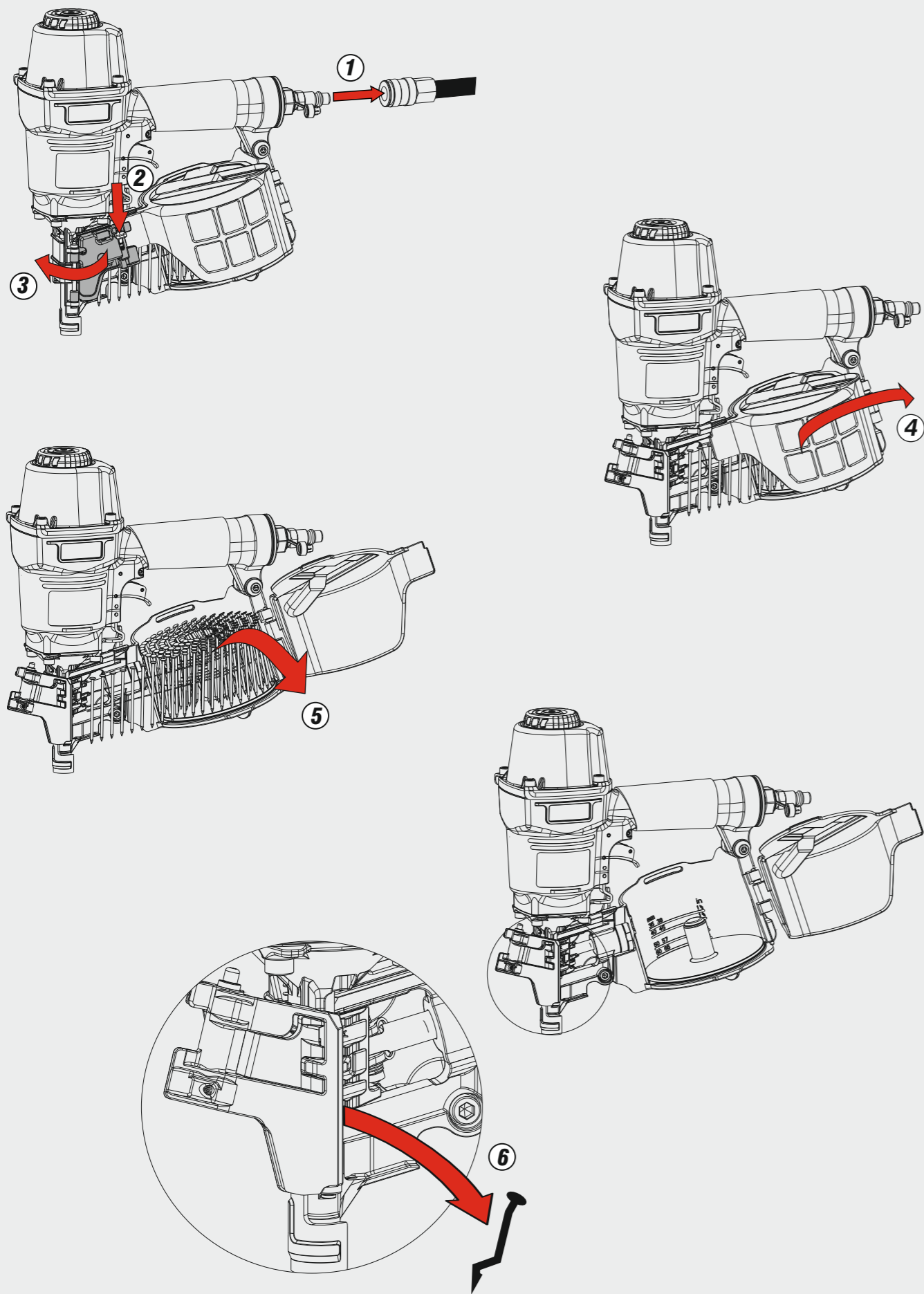
101	2MCN3165-A101	Hex. Soc. Hd. Bolt
102	2MCN3165-A102	Washer
103	2MCN2865-A103	Deflector
104	2MCN3165-A104	Muffler
105	2MCN3165-A105	Rubber Pad
106	2MCN2865-A106	Cap
107	2MCN3165-A107	Hex. Soc. Hd. Bolt
108	2MCN3165-A108	Washer
109	2MCN3165-A109	Compression Spring
110	2MCN3165-A110	Hd.Valve Piston
111	2MCN3165-A111	O-Ring
112	2MCN3165-A112	O-Ring
113	2MCN3165-A113	Seal Gasket
114	2MCN3165-A114	Seal
115	2MCN3165-A115	Collar
116	2MCN3165-A116	Packing
117	2MCN3165-A117	O-Ring
118	2MCN2865-A118	Driver Unit
119	2MCN3165-A119	Cylinder
120	2MCN3165-A120	O-Ring
121	2MCN3165-A121	Cylinder Spacer
122	2MCN3165-A122	O-Ring
123	2MCN3165-A123	Cylinder Ring
124	2MCN3165-A124	Bumper
125	2MCN2865-A125	Cylinder Press Ring
126	2MCN2865-A126	Press Ring
200	2MCN3165-A200	Trigger Valve Unit
201	2MCN3165-A201	O-Ring
202	2MCN3165-A202	O-Ring
203	2MCN3165-A203	Plunger Cap
204	2MCN3165-A204	Valve Plunger
205	2MCN3165-A205	O-Ring
206	2MCN3165-A206	O-Ring
207	2MCN3165-A207	Spring
208	2MCN2550-A208	Plunger
209	2MCN3165-A209	O-Ring
210	2MCN3165-A210	Trigger Valve Head
211	2MCN3165-A211	Spring Pin
212	2MCN3165-A212	Spring Pin
213	2MCN3165-A213	Spring Pin
221	2MCN2550-A215	Trigger Unit
222	2MCN2550-A214	Spring
301	2MCN2865-A301	Gun Body Unit
302	2MCN3165-A302	End Cap
303	2MCN3165-A303	O-Ring
304	2MCN3165-A304	Dusty Cover
305	2MCN3165-A305	Air Plug
401	2MCN2865-A401	Nose Piece
402	2MCN3165-A402	O-Ring
403	2MCN3165-A403	Feed Piston
404	2MCN3165-A404	O-Ring
405	2MCN3165-A405	O-Ring
407	2MCN3165-A407	Spring A Compression
408	2MCN3165-A408	Feed Bumper
409	2MCN3165-A409	Feed Piston Cap
410	2MCN3165-A410	C-Ring
411	2MCN2865-A411	Feed Finger
412	2MCN3165-A412	Feed Finger Spring
414	2MCN3165-A414	Pu Retainer
415	2MCN3165-A415	First Stopper Finger
416	2MCN3165-A416	Urethane Retainer
417	2MCN2550-A417	Spring
418	2MCN3165-A418	Pin Feed Piston
419	2MCN2550-A419	Pin-Nail Stop
420	2MCN3165-A420	Door Shaft Pin
421	2MCN3165-A421	Door
422	2MCN3165-A422	Latch Spring
423	2MCN3165-A423	Door Latch
424	2MCN3165-A424	Spring Pin
425	2MCN3165-A425	Nail Stop
426	2MCN3165-A426	Stopper Finger Sprin
427	2MCN3165-A427	Pin-Nail Stop
428	2MCN3165-A428	Hex. Soc. Hd. Bolt
429	2MCN3165-A429	Hex. Soc. Hd. Bolt
430	2MCN3165-A430	Safety Cover
431	2MCN3165-A431	Bolt Cap
432	2MCN3165-A432	Safety Guide
433	2MCN3165-A433	Spring Pin
434	2MCN3165-A434	Safety Spring
435	2MM365-A416	Safety B Unit
436	2MCN3165-A436	Adjust Axie
437	2MCN3165-A437	Cover-Safety
438	2MCN3165-A438	Adjust Rod
439	2MCN3165-A439	O-Ring



440	2MCN3165-A440	Safety A Unit
441	2MCN3165-A441	E-Ring
442	2MCN3165-A442	Protective Casing
443	2MCN3165-A443	Magazine Cover
444	2MCN3165-A444	Spring Base A
445	2MCN3165-A445	Pull Spring
446	2MCN3165-A446	Spacer
447	2MCN3165-A447	Magazine Case
448	2MCN3165-A448	Spring Base
449	2MCN3165-A449	Door Shaft Pin
450	2MCN3165-A450	Shaft Ring
451	2MCN3165-A451	Hex. Soc. Hd. Bolt
452	2MCN3165-A452	Flat Washer
454	2MCN3165-A454	Lock Nut
455	2MCN3165-A455	Muzzle Protector
456	2MCN3165-A456	Fixed Pin
457	2MCN2550-A456	Fixed Ring
458	2MCN3165-A458	O-Ring
459	2MCN3165-A459	Fix-Plate
460	2MCN3165-A460	O-Ring



Disincerramento - Jam clearing - Staubeseitigung - Décoincement - Desatascamiento - Απεμπλοκή
 Desencravamento - Deblokkering bij vastlopen - Sıkışma giderme - Rensning av igensättningar

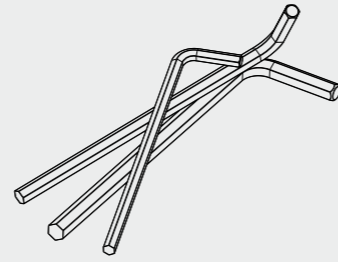
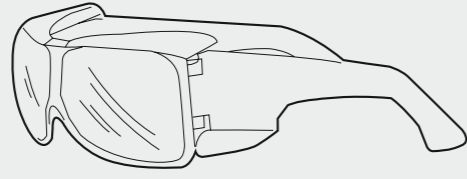


CN28.65

cod. 195MCN2865

Indice di modifica Upgrade number **A1**

Dotazioni - Equipment - Ausstattung - Outillage - Dotaciones - Εξοπλισμός
 Dotações - Uitrusting - Donanımlar - Utrustning



Guarnizioni - O-Rings - Dichtungen - Joints toriques - Juntas
 Δακτύλιος στεγανοποίησης - Vedantes - O-ringen - Contalar - O-ringar

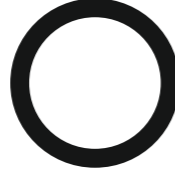
2MCN3165-A209



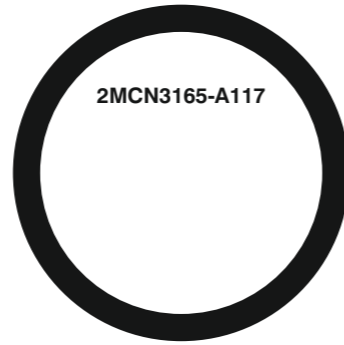
2MCN3165-A206



2MCN3165-A405



2MCN3165-A117



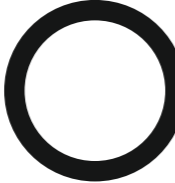
2MCN3165-A458



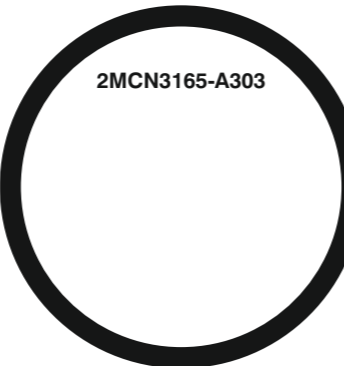
2MCN3165-A404



2MCN3165-A202



2MCN3165-A303



2MCN3165-A460



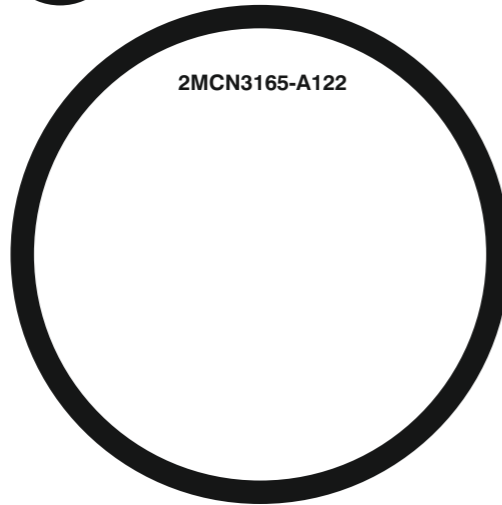
2MCN3165-A201



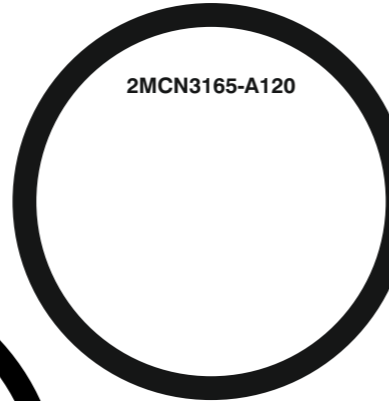
2MCN3165-A439



2MCN3165-A122



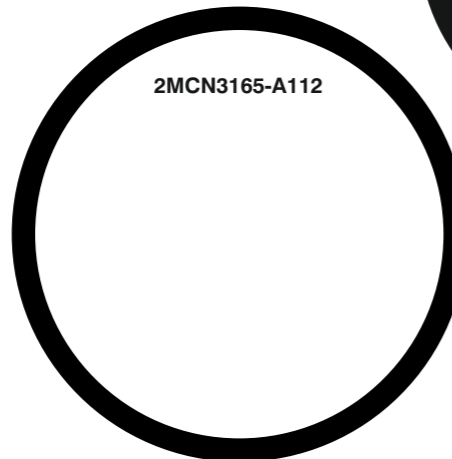
2MCN3165-A120



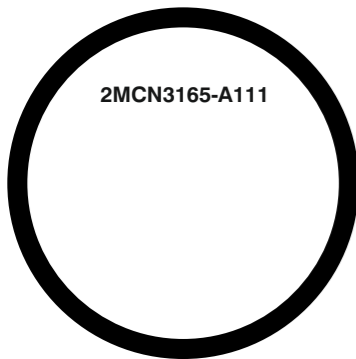
2MCN3165-A205



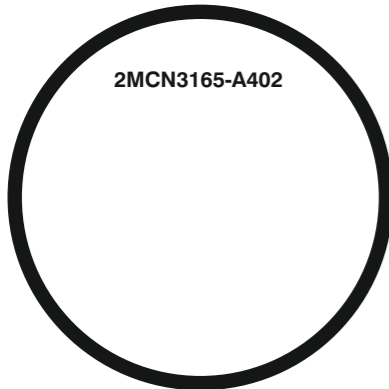
2MCN3165-A112



2MCN3165-A111



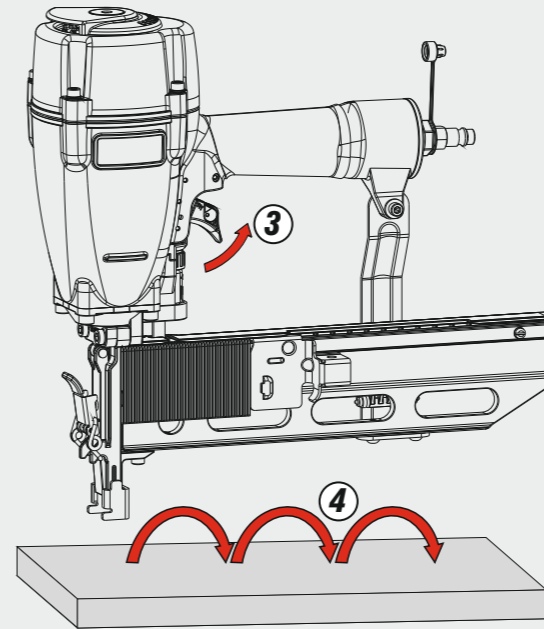
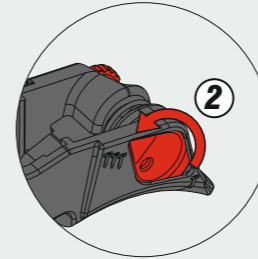
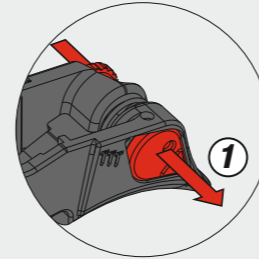
2MCN3165-A402



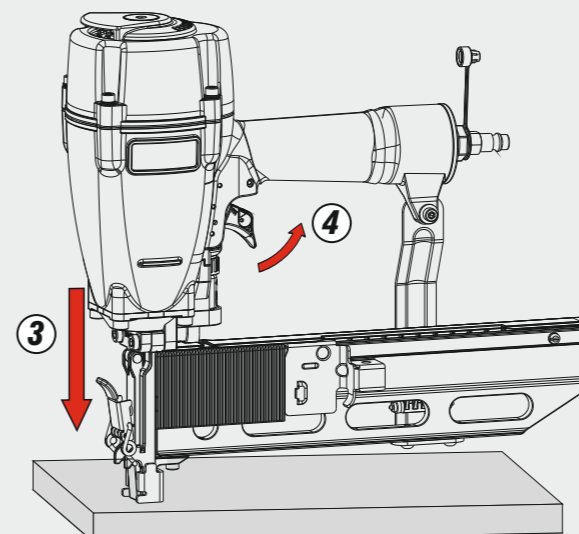
2MCN2865-K100

Azionamento - Actuation - Auslösung - Actionnement - Accionamiento - Ενεργοποίηση
 Acionamento - Activering - Çalıştırma - Aktivering

Azionamento a contatto
 Contact actuation



Oppure - Or



Azionamento sequenziale singolo
 Single sequential actuation

