

**Manuale d'uso, manutenzione e parti di ricambio**  
**Manual for use, maintenance and spare parts**  
**Bedienungs- und Wartungshandbuch sowie Ersatzteilliste**  
**Mode d'emploi, de maintenance et pièces de rechange**  
**Manual de uso, mantenimiento y recambios**  
**Εγχειρίδιο χρήσης, συντήρησης και ανταλλακτικών**  
**Manual de uso, manutenção e peças sobresselentes**  
**Handleiding voor gebruik, onderhoud en wisselstukken**  
**Kullanım, bakım ve yedek parça kılavuzu**

**Parte 2**  
**Part 2**  
**Teil 2**  
**Partie 2**  
**Part 2**  
**Μέρος 2**  
**Parte 2**  
**Deel 2**  
**Kısım 2**



**V90**

cod. 195MV90



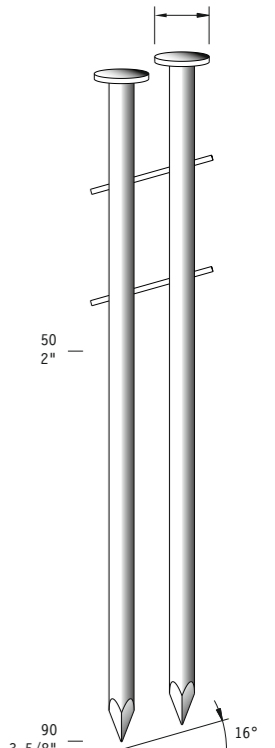
**Warning:** Please read the instructions and warnings for this tool carefully before use. Failure to do so could lead to serious injury.

Dati tecnici Technical data Technische Daten	Caractéristiques techniques Datos técnicos Τεχνικά χαρακτηριστικά	Dados técnicos Technische gegevens Teknik veriler	
<b>Misure impiegabili mm</b> Lengths mm Verwendbare Nagellänge mm	Dimensions utiles mm Medidas de longitud mm Μήκος Αναλωσίμου - mm	Medidas utilizáveis mm Toepasbare afmetingen mm Boy mm	<b>50 ÷ 90</b>
<b>Capacità caricatore n° punti</b> Magazine capacity Magazinkapazität Nägel	Capacité chargeur n° de points Capacidad cargador n° puntos Δωσατοτητα γεμιστρα	Capacidade carregador n° pontos Capaciteit magazijn in aantal spijkers Dergi kapasitesi	<b>225 ÷ 250</b>
<b>Pressione d'esercizio</b> Operating pressure Betriebsdruck	Pression d'exercice Presión de servicio Πίεση λειτουργίας	Pressão de serviço Werkdruk Çalışma basıncı	<b>5 ÷ 8 bar</b> <b>70 ÷ 115 psi</b>
<b>Consumo aria litri/colpo</b> Air consumption litres/stroke Luftverbrauch Liter/Schuss	Consommation d'air litres/coup Consumo aire litros/golpe Κατανάλωση αέρα - λίτρα/βολή	Consumo ar litros/disparo Luchtverbruik liter/slag Litre/vuruş hava tüketimi	<b>2,28</b>
<b>Peso kg</b> Weight kg Gewicht kg	Poids kg Peso kg Βάρος - kg	Peso kg Gewicht in kg Ağırlık kg	<b>3,98</b>
<b>Dimensioni mm</b> Dimensions mm Abmessungen mm	Dimensions mm Dimensiones mm Διαστάσεις mm	Dimensões mm Afmetingen mm Boyutlar mm	<b>362x132x307</b> (LxWxH)
<b>UNI EN 12549 :2009</b> <b>UNI EN ISO 4871 :2009</b>	<b>Pressione sonora in pos. operatore</b> Sound pressure in operator's position Schalldruck am Arbeitsplatz	Pression sonore poste Opérateur Presión sonora en la pos. del operador Ηχητική πίεση στη θέση του χειριστή	<b>90,8 dB(A)</b> (K= 4 dB)
<b>UNI EN 12549 :2009</b> <b>UNI EN ISO 3746 :2011</b> <b>UNI EN ISO 4871 :2009</b>	<b>Potenza sonora emessa</b> Sound power emitted Emittierte Schallleistung	Puissance sonore émise Potencia sonora emitida Εκπεμπόμενη ηχητική ισχύς	<b>103,8 dB(A)</b> (K= 4 dB)
<b>UNI CEN ISO/TS 8662-11 :2006</b> <b>UNI EN ISO 5349-2 :2004</b> <b>UNI EN 12096 :1999</b>	<b>Emissione vibratoria sull'impugnatura</b> Vibratory emissions on handle Vibrationsemission am Griff	Émission vibratoire sur la prise en main Emisión de vibraciones en la empuñadura Εκπεμπόμενες δονήσεις στη λαβή	<b>&lt;5,1 m/s<sup>2</sup></b> (K= 2 m/s <sup>2</sup> )

**CNW28**

**CNW31**

Ø 6,7 + Ø 7,2  
Head dia: .264" + .283"

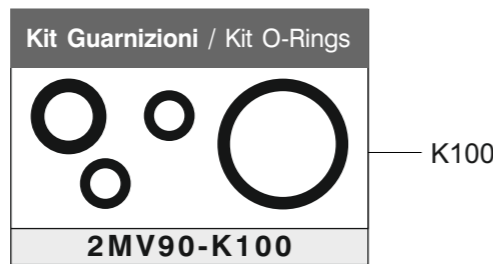
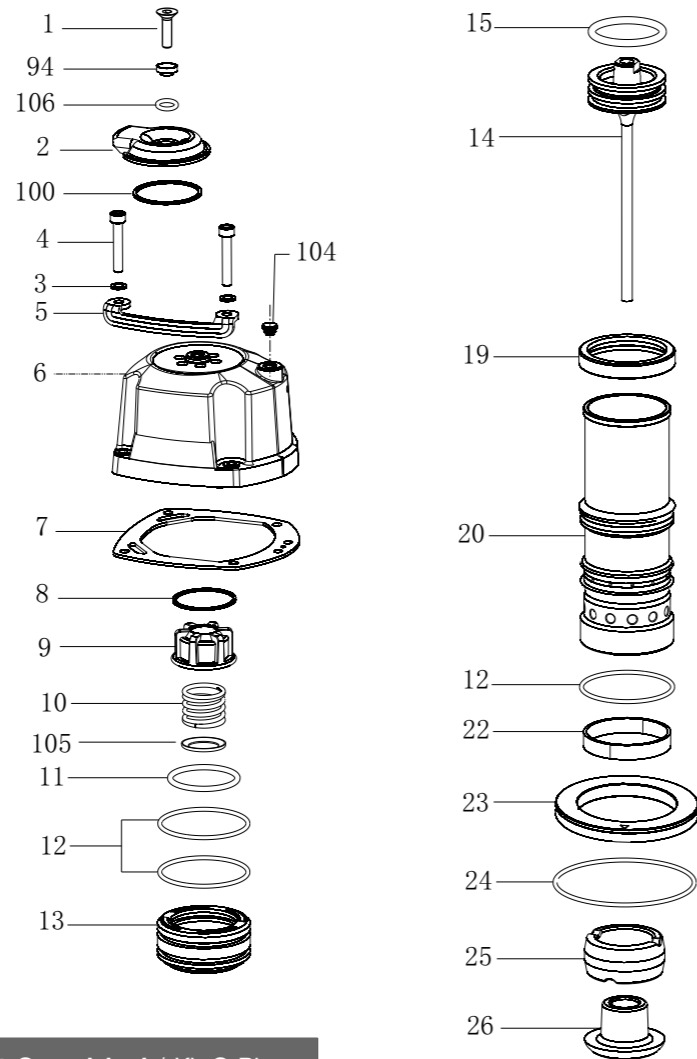


Ø 2,8 + Ø 3,3  
Shank dia: .110 + .131"  
Gauge: 11½ + 10

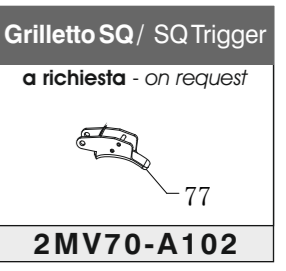
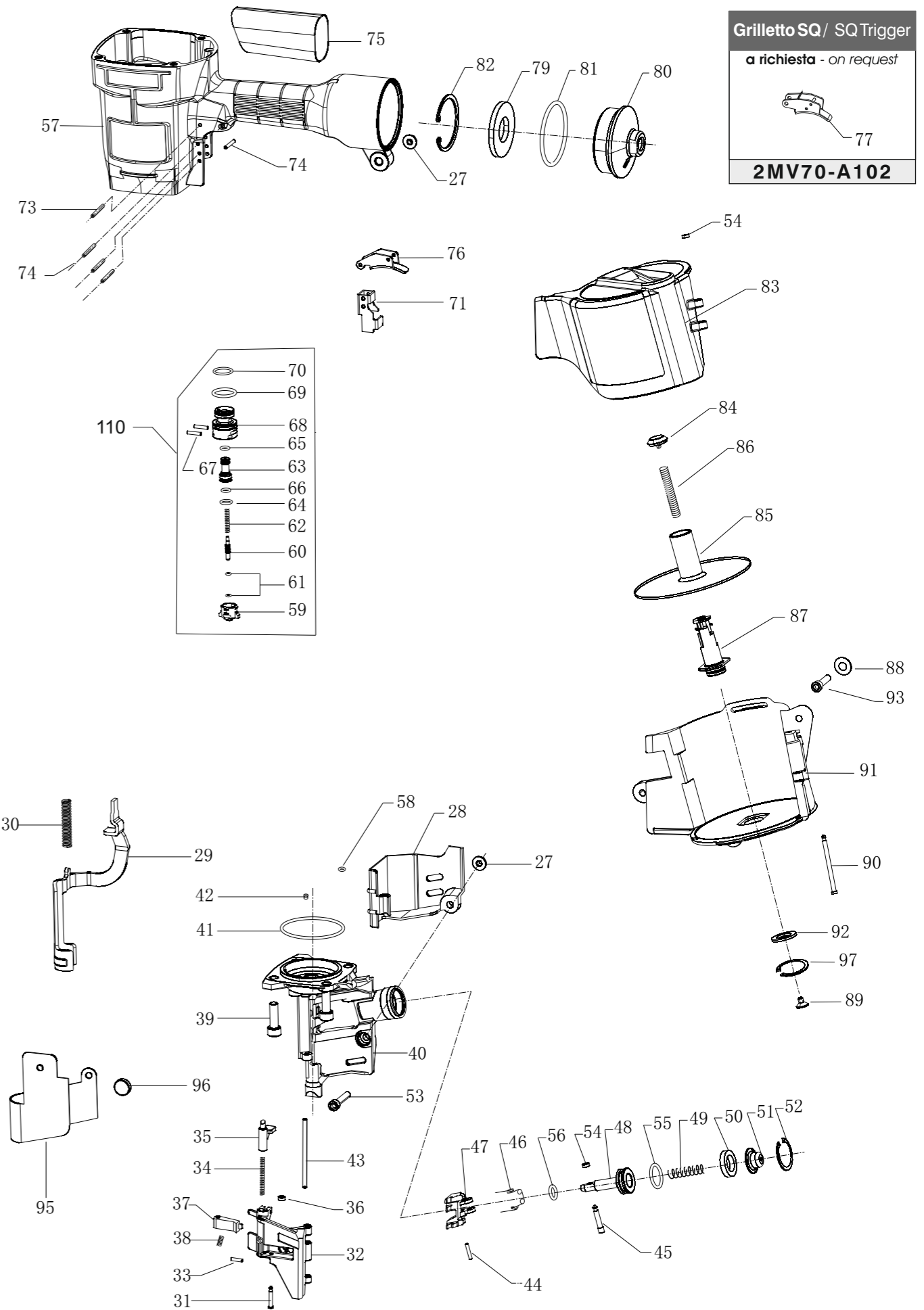
195MV90\_V90\_0\_Rev20\_28/04/2023\_DV

Ref. No. Part No. Description

001	2MCN3383-A101	Counter Sunk Screw
002	2MV80-A002	Deflector
003	2MV57-A003	Washer
004	2MV80-A004	Hex. Soc. Hd. Bolt
005	2MV80-A005	Protection
006	2MV80-A006	Cap
007	2MV80-A007	Gasket
008	2MV57-A007	Ring
009	2MV80-A009	Bumper
010	2MV57-A009	Compression Spring
011	2MV57-A011	O-Ring
012	2MV80-A012	O-Ring
013	2MV80-A013	Head Valve Piston
014	2MV80-A014	Driver Unit
015	2MV80-A015	O-Ring
019	2MCN2970-A115	Collar
020	2MV80-A020	Cylinder
022	2MV80-A022	Cylinder Band
023	2MV80-A023	Cylinder Ring
024	2MV80-A024	O-Ring
025	2MCN2970-A121	Bumper-A
026	2MCN2970-A122	Bumper-B
027	2MCN2970-A442	Bolt Cap
028	2MV80-A028	Guard Cover
029	2MV90-A029	Safety
030	2MV80-A030	Safety Spring
031	2MV80-A031	Pin-Nail Stop
032	2MV80-A032	Door
033	2MCN3165-A211	Spring Pin
034	2MV80-A034	Latch Spring
035	2MV90-A035	Door Latch
036	2MV80-A036	Pin
037	2MCN2970-A419	Nail Stop
038	2MV80-A038	Spring
039	2MV80-A039	Hex. Soc. Hd. Bolt
040	2MV90-A040	Nose Piece
041	2MV80-A041	O-Ring
042	2MCN2970-A123	Grommet A
043	2MCN2970-A124	Door Shaft Pin
044	2MCN3165-A216	Spring Pin
045	2MCN2970-A435	Pin Feed Piston
046	2MCN2970-A437	Feed Finger Spring
047	2MV80-A047	Feed Finger
048	2MV80-A048	Feed Piston
049	2MCN2970-A409	Feed Finger Spring
050	2MV80-A050	Feed Bumper
051	2MV70-A046	Feed Piston Cap
052	2MCN2970-A411	C-Ring
054	2MCN2970-A416	Pu Retainer
055	2MV80-A055	O-Ring
056	2MV80-A056	O-Ring
057	2MV80-A057	Body
058	2MCN2970-A402	O-Ring
059	2MV57-A084	Trigger Valve Head
060	2MV57-A065	Plunger
061	2MV57-A066	O-Ring
062	2MV57-A064	Spring
063	2MV57-A061	Valve Plunger
064	2MV57-A063	O-Ring
065	2MV57-A060	O-Ring
066	2MV57-A062	O-Ring
067	2MCN2970-A211	Pin
068	2MV57-A070	Plunger Cap
069	2MV57-A067	O-Ring
070	2MV57-A069	O-Ring
071	2MCN2970-A425	Safety Guide
073	2MV80-A073	Roll Pin
074	2MV70-A068	Roll Pin
075	2MV80-A075	Handle Grip
076	2MV70-A101	Trigger Assy
077	2MV70-A102	Sequential Trigger
079	2MV80-A079	Filter
080	2MV80-A080	End Cap
081	2MV80-A081	O-Ring
082	2MV80-A082	C-Ring
083	2MV80-A083	Magazine Cover
084	2MV80-A084	Spring Base
085	2MV90-A085	Spacer
086	2MV57-A073	Spring
087	2MV80-A087	Magazine Post
088	2MV57-A089	Washer
089	2MV57-A072	Spring Base
090	2MCN2970-A443	Magazine Shaft Pin

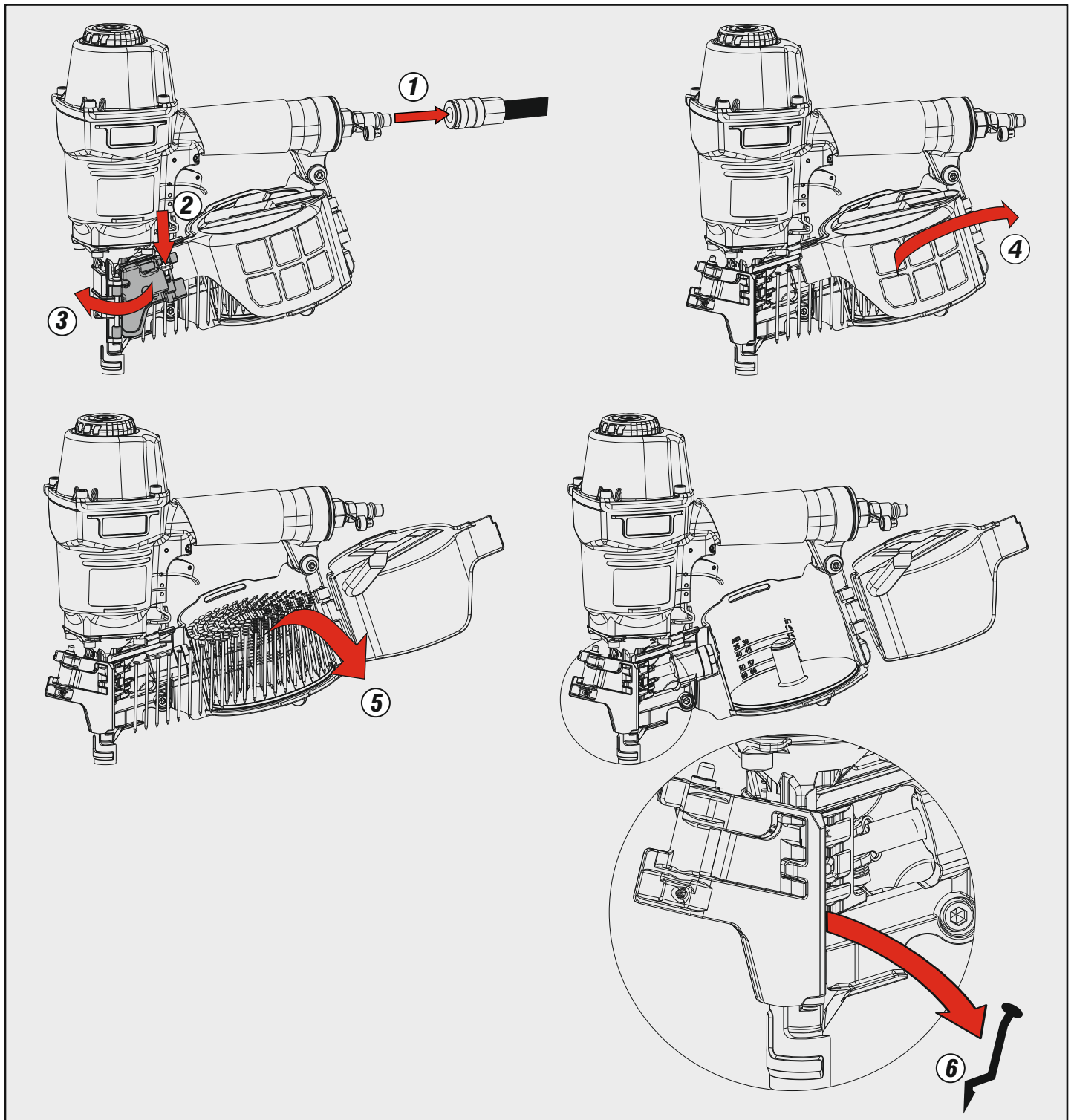


091	2MV90-A091	Magazine Case
092	2MV80-A092	Washer
093	2MV80-A093	Hex. Soc. Hd. Bolt
094	2MV90-A094	Grommet A
095	2MV80-A095	Dusty Cover
096	2MV80-A096	Dust Shield Plug
097	2MV57-A080	Washer
100	2MV80-A100	Washer
104	2MCN2970-A103	Grommet
105	2MCN2970-A110	Washer
106	2MV80-A106	O-Ring
110	2MV57-A100	Trigger Valve Assy
K100	2MV90-K100	Kit O-Ring



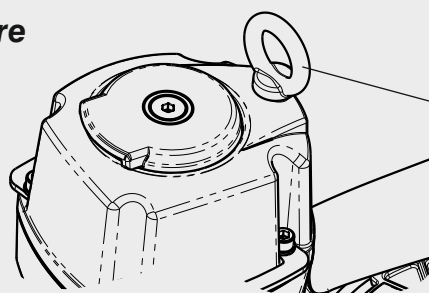
Parti di ricambio - Spare parts - Ersatzteile - Pièces de rechange - Recambios  
Αναλλακτικά - Partes sobresselentes - Wisselstukken - Yedek parçalar

V90 cod. 195MV90 Indice di modifica Upgrade number 0



Accessori a richiesta - Upon request accessories

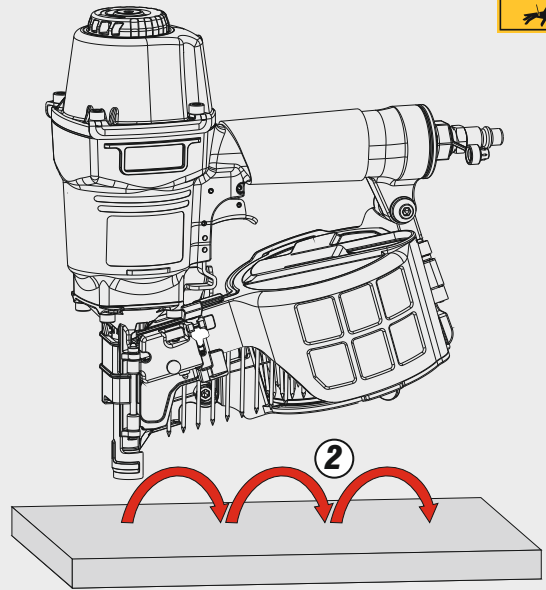
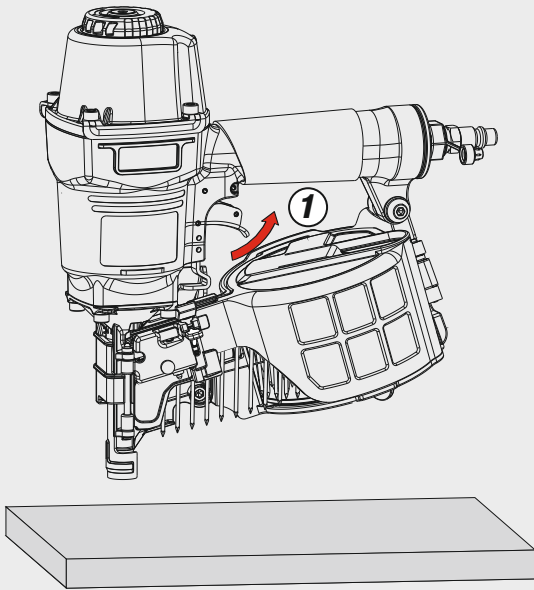
**Supporto bilanciere**  
Tool hanger



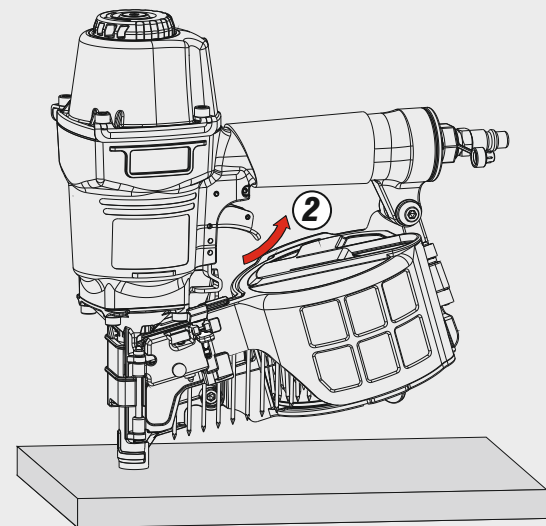
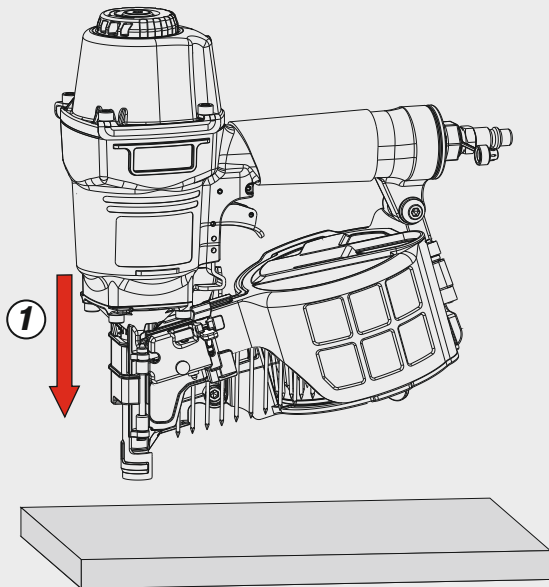
08.15.7

## Azionamento a contatto

Contact actuation



Oppure - Or



Dotazioni - Equipment - Ausstattung - Outillage - Dotaciones - Εξοπλισμός  
Dotações - Uitrusting - Donanımlar

