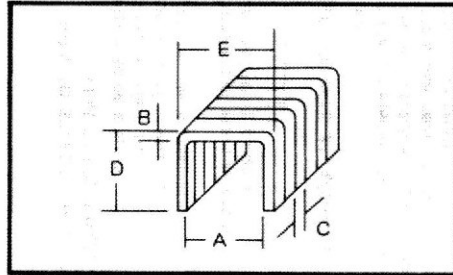


HEAVY DUTY STAPLE GUN TACKER WITH ADJUSTABLE WIRE ATTACHMENT

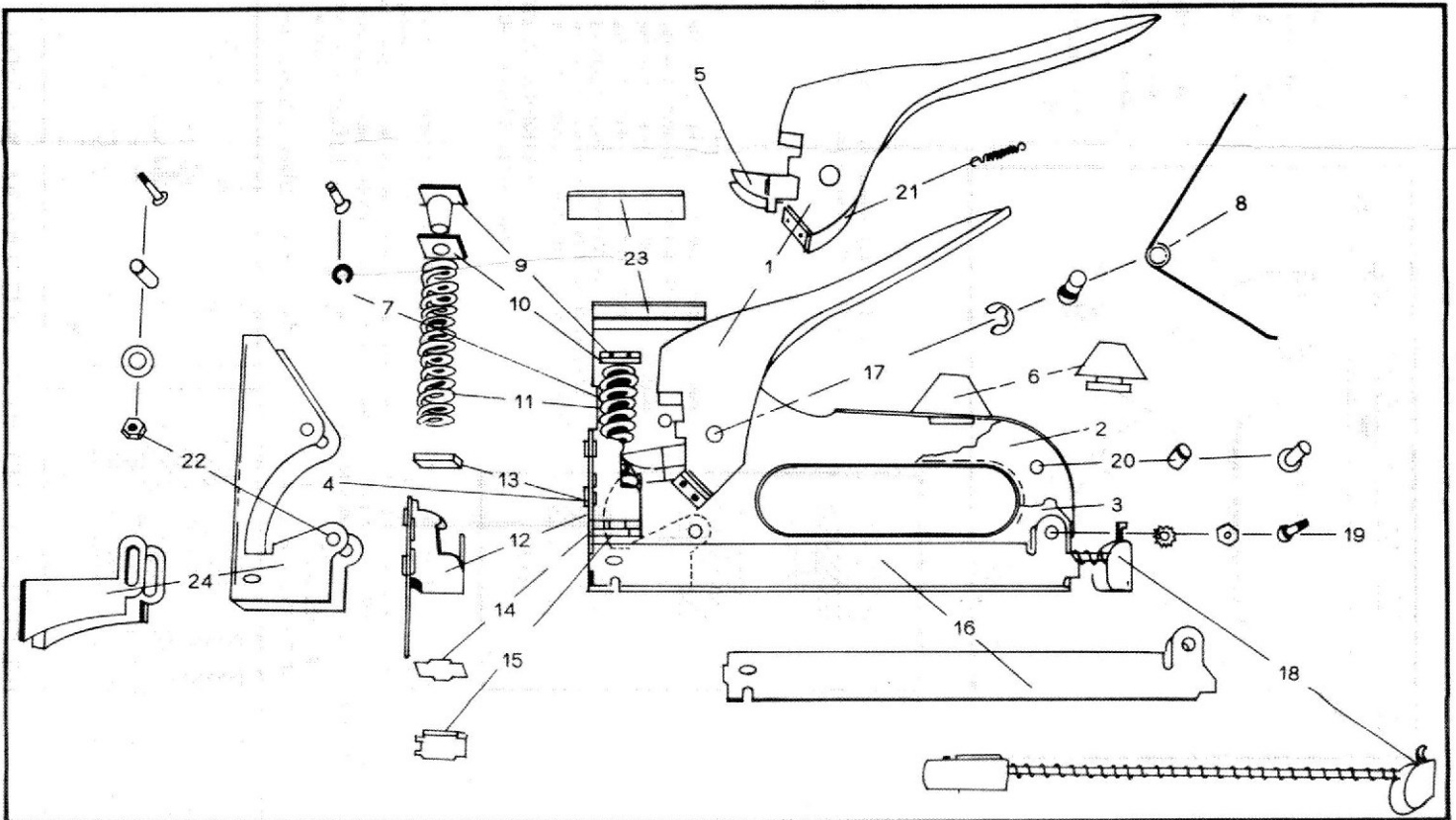
R. O. C. PART NO. 20159, OTHERS PENDING. U. S. PAT. NO.4,552,296

This Heavy duty Staple Gun Tacker will accept the following staple specifications when retilling:

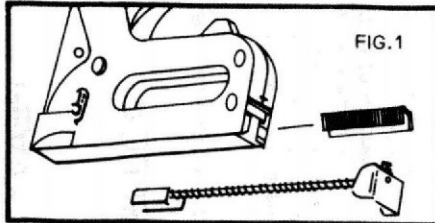
- A 9.30mm Min
- B 0.50-0.70mm
- C 1.20-1.35mm
- D Up to 14.0mm
- E 13.0mm Max.



NO.	PART
1	HANDLE
2	MAIN BODY RIGHT
3	MAIN BODY LEFT
4	FRONT COVER
5	TRIGGER
6	RUBBER FENDER
7	CLEVIS PIN & RING
8	HANDLE RETURN SPRING
9	UPPER SPACER
10	UPPER SPACER BUMPER
11	PLUNGER SPRING
12	PLUNGER WITH KNIFE
13	PLUNGER BUMPER
14	LOWER SPACER BUMPER
15	LOWER SPACER
16	FRAME CHANNEL ASSEMBLY
17	CLEVIS PIN & RING
18	PUSHER ROD ASSEMBLY
19	REAR SCREW & NUT
20	RIVET & PEAR BUSHING
21	TRIGGER RETURN SPRING
22	FRONG COVER SCREW, WASHER, NUT & BUSHING
23	FRONT COVER RUBBER PACKING
24	ADJUSTABLE WIRE ATTACHMENT

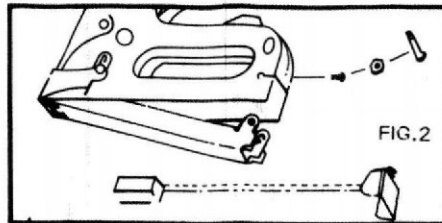


OPERATING INSTRUCTIONS FOR THE HEAVY DUTY STAPLE GUN TACKER



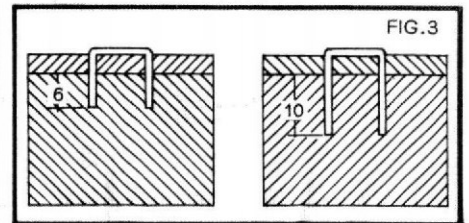
TO LOAD THE STAPLES (Please see fig. 1)

1. Pull the pusher rod out by pressing down the tab marked "press down".
2. Insert a strip of staples.
3. Put the pusher rod in place.



TO CLEAN STAPLE CHANNEL (Please see fig. 2)

1. Remove pusher rod.
2. Remove screw and ring from frame-channel.
3. Pull down entire inside frame and clean in with a clean and dried rag (never grease the passage of staples)
4. Put the set in place by doing the reverse operation.



POSITION OF STAPLER/STAPLE PENSTRATION

We cannot obtain a good fastening unless we keep the front part of the stapler in contact with the material, so, it is necessary to bear down on the front top to prevent recoil, it makes the stapler totally flat on the material when operating.

HOW TO SELECT THE STAPLE OF SUITABLE WIDTH AND LENGTH FOLLOWING MUST BE CONSIDERED:

- A) the thickness of material to be stapled
 B) the hardness of material on which to fix
- in hard wood, use narrow width staples, a penetration of 5 to 6mm in the support is generally enough.
 - For soft wood, to increasing adhesive strength, try wider width staples and 10mm penetration will be safety.

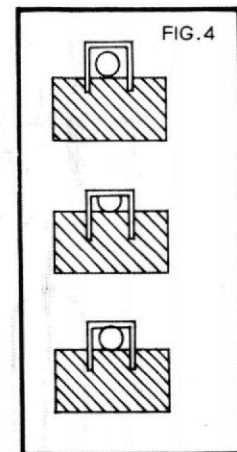
In these depths of penetration, it would be always well to add to thickness of place to be fixed.

EXAMPLE: (Please see fig. 3)

- Plate of 4mm thickness on hard wood:
 leg length $4+6=10$ mm narrow width staples
 Plate of 4mm thickness on soft wood:
 leg length $4+10=14$ mm wider width staples •

TO ADJUST THE WIRE ATTACHMENT

1. Loosen the nut.
2. Measure the diameter of the wire you stapling.
3. Adjust the wire attachment up and down to choose the proper height you expect usually the proper height is slightly smaller than the wire's diameter. (Please fig. 4).
4. Fasten the nut completely. •



IMPORTANT:

- 1) If staple is not driven flush, simply means too long a leg length has been used, try the next shorter leg length for better results.
- 2) Insert the same width of staples each time, never combine different width of staples into frame-channel, it may cause deliver troubles when operating.
- 3) To avoid leaning of the staples when using adjustable wire attachment, it is necessary to raise slightly the rear of stapler horizontally with the wire attachment, and also bear down on the front top to prevent recoil. (Please see fig. 5)

