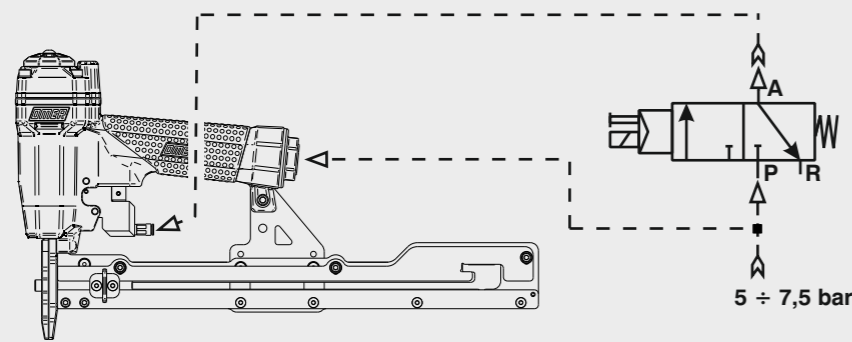


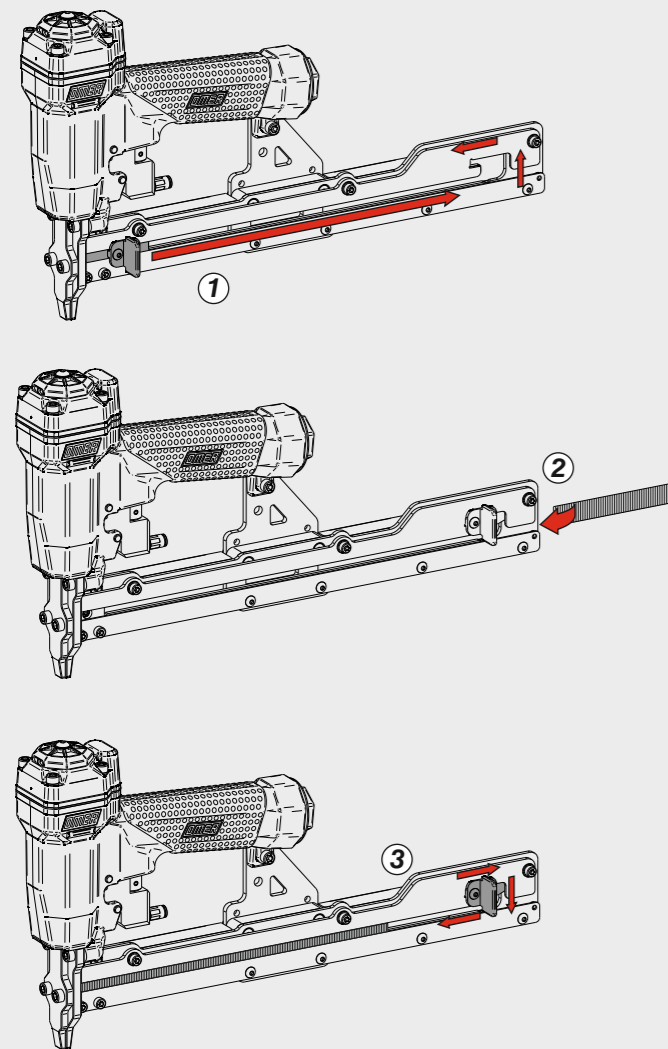
Schema di collegamento - Connecting diagram



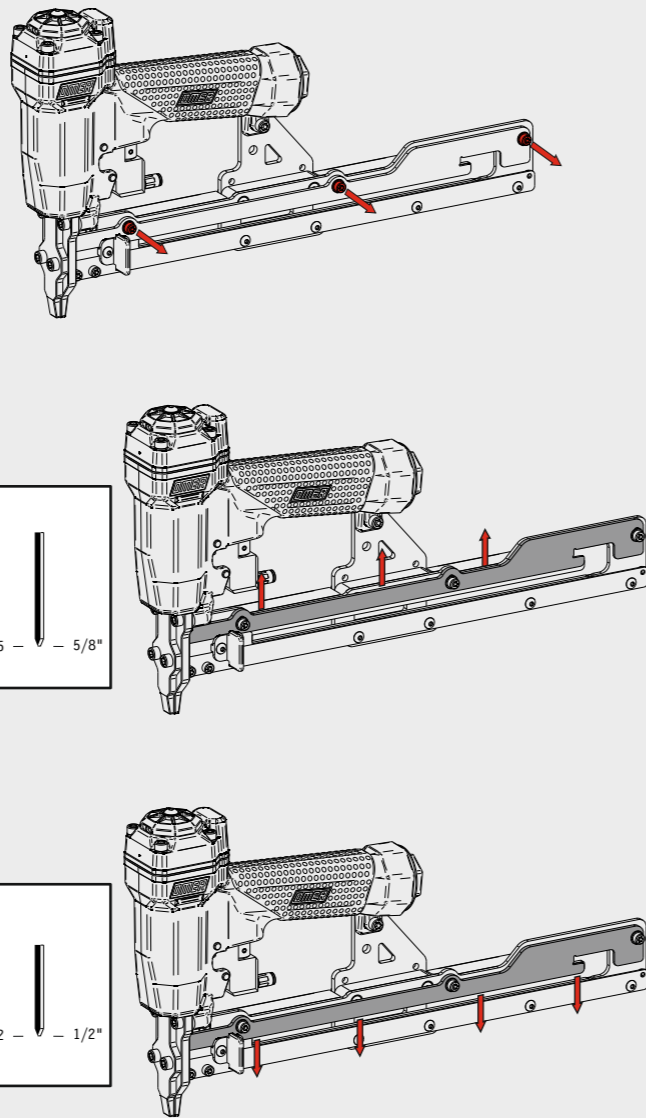
Valvola 3/2 NC
Valve 3/2 NC

5 ÷ 7,5 bar

Caricamento - Loading - Laden - Chargement - Carga Γέμισμα - Carregamento - Laden - Yükleme



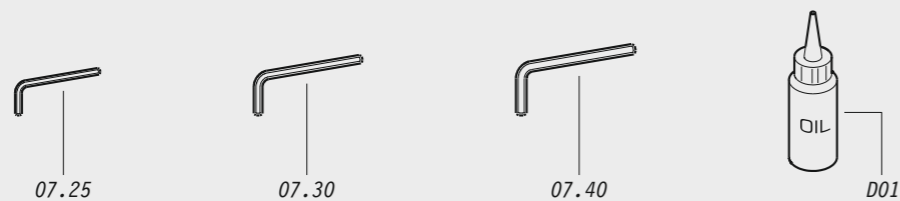
Regolazioni - Adjustments



15 - 5/8"

12 - 1/2"

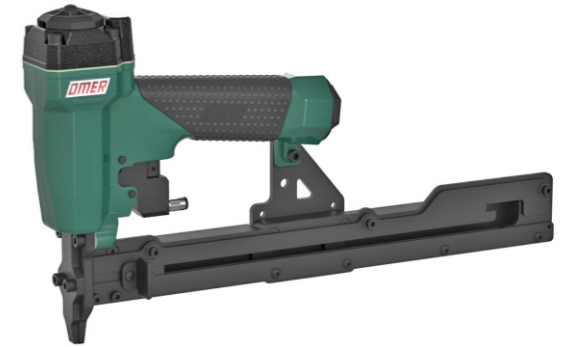
Dotazioni - Equipment - Ausstattung - Outillage - Dotaciones - Εξοπλισμός Dotações - Uitrusting - Donanımlar



OMER

Manuale d'uso, manutenzione e parti di ricambio
Manual for use, maintenance and spare parts
Bedienungs- und Wartungshandbuch sowie Ersatzteilleiste
Mode d'emploi, de maintenance et pièces de rechange
Manual de uso, mantenimiento y recambios
Εγχειρίδιο χρήσης, συντήρησης και ανταλλακτικών
Manual de uso, manutenção e peças sobresselentes
Handleiding voor gebruik, onderhoud en wisselstukken
Kullanım, bakım ve yedek parça kılavuzu

Parte 2
Part 2
Teil 2
Partie 2
Part 2
Μέρος 2
Parte 2
Deel 2
Kısım 2



RI.215 CL2-3

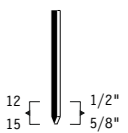
cod. 1220650-3

| Dati tecnici Technical data Technische Daten | Caractéristiques techniques Datos técnicos Τεχνικά χαρακτηριστικά | Dados técnicos Technische gegevens |
|--|--|---|
| Misure impiegabili mm Lengths mm Verwendbare Nagellänge mm | Dimensions utiles mm Medidas de longitud mm Μήκος Αναλωσίμου - mm | Medidas utilizáveis mm Toepasbare afmetingen mm Boy mm |
| Capacità caricatore n° punti Magazine capacity Magazinkapazität Nägel | Capacité chargeur n° de points Capacidad cargador n° puntos Δωνατοτητα γεμιστερα | Capacidade carregador n° pontos Capaciteit magazijn in aantal spijkers Dergi kapasitesi |
| Pressione d'esercizio Operating pressure Betriebsdruck | Pression d'exercice Presión de servicio Πίεση λειτουργίας | Pressão de serviço Werkdruk Çalışma basıncı |
| Consumo aria litri/colpo Air consumption litres/stroke Luftverbrauch Liter/Schuss | Consumation d'air litres/coup Consumo aire litros/golpe Κατανάλωση αέρα - λίτρα/βολή | Consumo ar litros/disparo Luchtverbruik liter/slag Litre/vuruş hava tüketimi |
| Peso kg Weight kg Gewicht kg | Poids kg Peso kg Βάρος - kg | Peso kg Gewicht in kg Ağırlık kg |
| Dimensioni mm Dimensions mm Abmessungen mm | Dimensions mm Dimensiones mm Διαστάσεις mm | Dimensões mm Afmetingen mm Boyutlar mm |
| UNI EN 12549 :2009 | UNI EN ISO 3746 :2011 | UNI EN ISO 4871 :2009 |
| Potenza sonora emessa Sound power emitted Emittierte Schallleistung | Puissance sonore émise Potencia sonora emitida Εκπεμπόμενη ηχητική ισχύς | Potência sonora emitida Geëmitteerd geluidsvermogen Çıkan ses gücü (ses desibeli) |
| | | 89 dB(A) (K= 4 dB) |

Tipo di punto
Type of fastener
Befestigungsmittel
Type de rivet
Tipo de punto
Τύπος αναλωσίμου
Tipo de agrafo
Type nietjes
Zimba ve çivi tipleri

Pins I

1x1,25



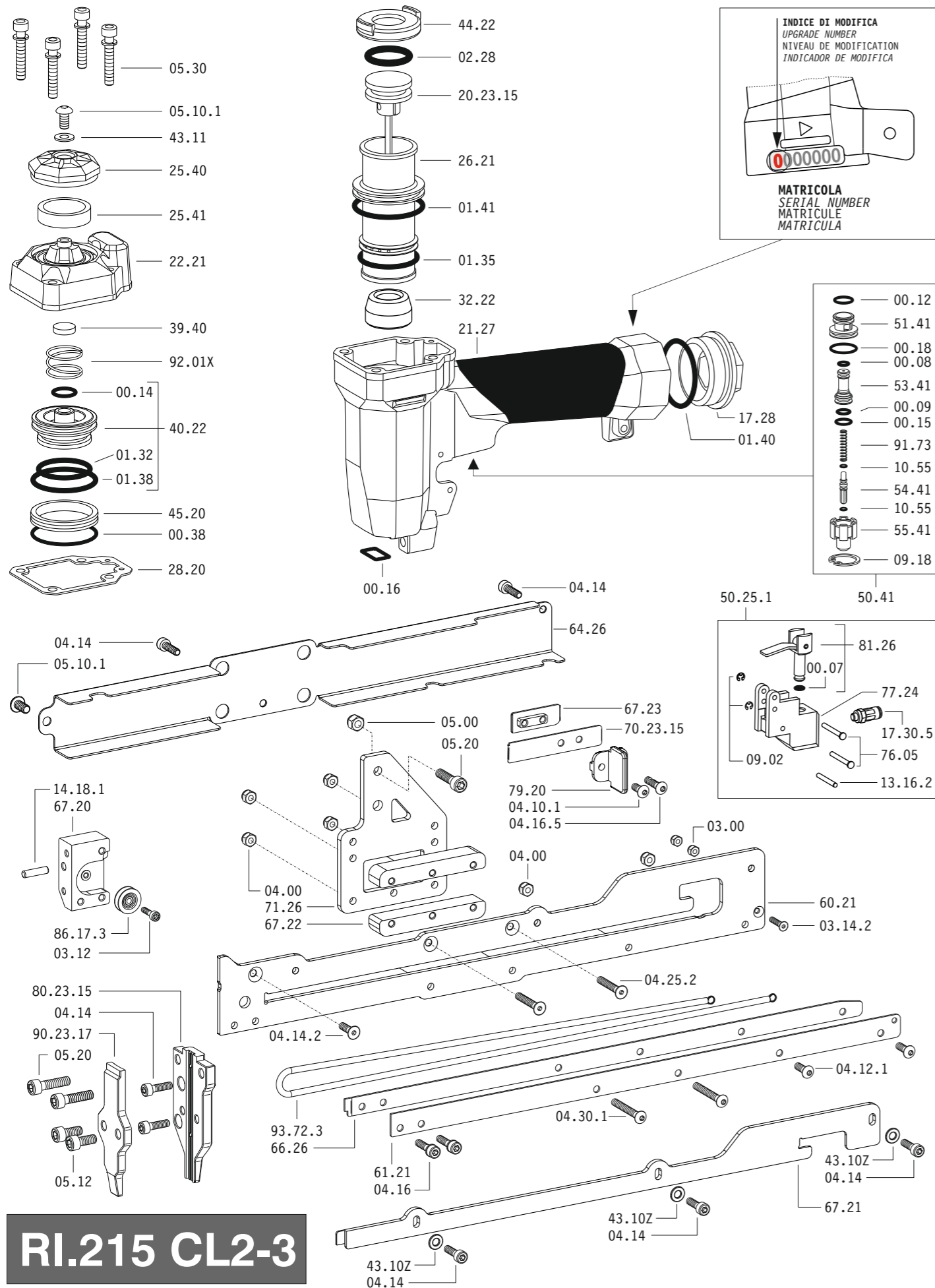
Gauge: 18

1220650-3_RI215CL2-3_2_rev20_24/09/2020 LA

**DO NOT
HANDHELD
THIS TOOL**



Parti di ricambio - Spare parts - Ersatzteile - Pièces de rechange - Recambios
Ανταλλακτικά - Partes sobresselentes - Wisselstukken - Yedek parçalar



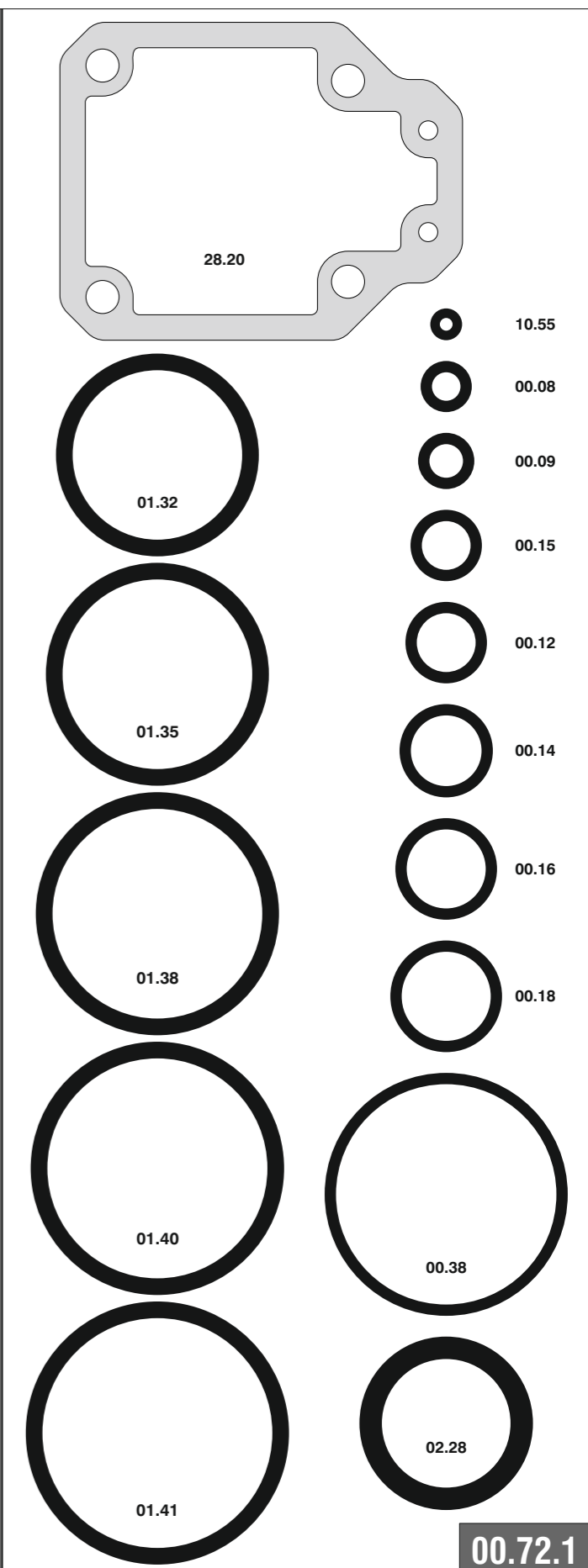
RI.215 CL2-3

cod. 1220650-3

Parti di ricambio - Spare parts - Ersatzteile - Pièces de rechange - Recambios
Ανταλλακτικά - Partes sobresselentes - Wisselstukken - Yedek parçalar

| Cod. | Descrizione | Description |
|----------|----------------------|-----------------------|
| 00.07 | O-Ring | O-Ring |
| 00.08 | O-Ring | O-Ring |
| 00.09 | O-Ring | O-Ring |
| 00.12 | O-Ring | O-Ring |
| 00.14 | O-Ring | O-Ring |
| 00.15 | O-Ring | O-Ring |
| 00.16 | O-Ring | O-Ring |
| 00.18 | O-Ring | O-Ring |
| 00.38 | O-Ring | O-Ring |
| 01.32 | O-Ring | O-Ring |
| 01.35 | O-Ring | O-Ring |
| 01.38 | O-Ring | O-Ring |
| 01.40 | O-Ring | O-Ring |
| 01.41 | O-Ring | O-Ring |
| 02.28 | O-Ring | O-Ring |
| 03.00 | Dado | Nut |
| 03.12 | Vite | Screw |
| 03.14.2 | Vite | Screw |
| 04.00 | Dado | Nut |
| 04.10.1 | Vite | Screw |
| 04.12.1 | Vite | Screw |
| 04.14 | Vite | Screw |
| 04.14.2 | Vite | Screw |
| 04.16 | Vite | Screw |
| 04.16.5 | Vite | Screw |
| 04.25.2 | Vite | Screw |
| 04.30.1 | Vite | Screw |
| 05.00 | Dado | Nut |
| 05.10.1 | Vite | Screw |
| 05.12 | Vite | Screw |
| 05.20 | Vite | Screw |
| 05.30 | Vite | Screw |
| 07.25 | Chiave esagonale | Hex. bar wrench |
| 07.30 | Chiave esagonale | Hex. bar wrench |
| 07.40 | Chiave esagonale | Hex. bar wrench |
| 09.02 | Anello elastico | Elastic ring |
| 09.18 | Anello elastico | Elastic ring |
| 10.55 | O-Ring | O-Ring |
| 13.16.2 | Spina | Pin |
| 14.18.1 | Spina | Pin |
| 17.28 | Tappo | Inlet cap |
| 17.30.5 | Raccordo | Air plug |
| 21.27 | Corpo | Body |
| 22.21 | Testa | Head |
| 25.40 | Deflettore | Exhaust deflector |
| 25.41 | Silenziatore | Silencer |
| 26.21 | Cilindro | Cylinder |
| 28.20 | Guarnizione testa | Head gasket |
| 32.22 | Ammortizzatore | Bumper |
| 39.40 | Guarnizione scarico | Exhaust seal |
| 40.22 | Valvola completa | Valve ass'y |
| 43.10Z | Rondella | Washer |
| 43.11 | Rondella | Washer |
| 44.22 | Guarnizione | Gasket |
| 45.20 | Anello valvola | Ring |
| 50.25.1 | Comando a distanza | Tremote trigger |
| 50.41 | Pulsante completo | Trigger valve ass'y |
| 51.41 | Boccola pulsante | Trigger valve housing |
| 53.41 | Pistone servovalvola | Valve piston |
| 54.41 | Pulsante | Trigger Valve |
| 55.41 | Raccordo pulsante | Bush |
| 60.21 | Guida sinistra | Left guide |
| 61.21 | Guida destra | Right guide |
| 64.26 | Carter | Carter |
| 66.26 | Distanziale | Spacer |
| 67.20 | Supporto | Support |
| 67.21 | Guida superiore | Upper guide |
| 67.22 | Distanziale | Spacer |
| 67.23 | Guida | Guide |
| 71.26 | Reggicaricatore | Support |
| 76.05 | Perno | Pin |
| 77.24 | Guida sicura | Safety trigger |
| 79.20 | Leva | Lever |
| 81.26 | Pistoncino | Piston |
| 86.17.3 | Carrucola | Pulley |
| 91.73 | Molla | Spring |
| 92.01X | Molla | Spring |
| 93.44 | Molla | Spring |
| 93.72.3 | Molla | Spring |
| 20.23.15 | Battente | Driver |
| 70.23.15 | Spingipunto | Pusher |
| 80.23.15 | Controtestina | Nose |
| 90.23.17 | Testina | Nose plate |
| D01 | Bocchetta olio | Oiler |

Guarnizioni - O-Rings - Dichtungen - Joints toriques - Junta - Δακτύλιος στεγανοποίησης - Vedantes - O-ringen - Contalar



RI.215 CL2-3

cod. 1220650-3

Indice di modifica
Upgrade number

2

Disincceppamento - Jam clearing - Staubeseitigung - Décoincement - Desatascamiento - Απεμπλοκή
Desencravamento - Deblokkering bij vastlopen - Sikişma giderme

