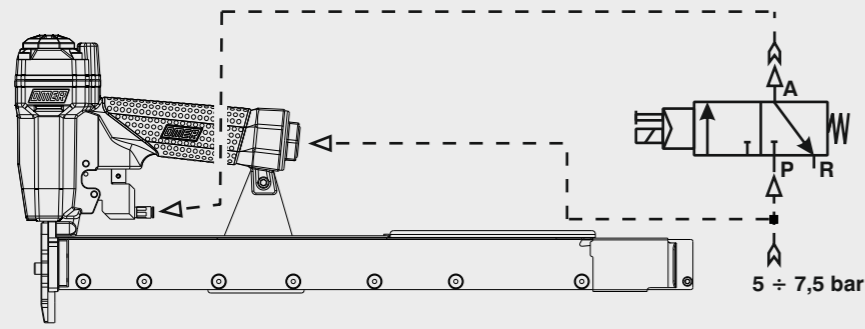
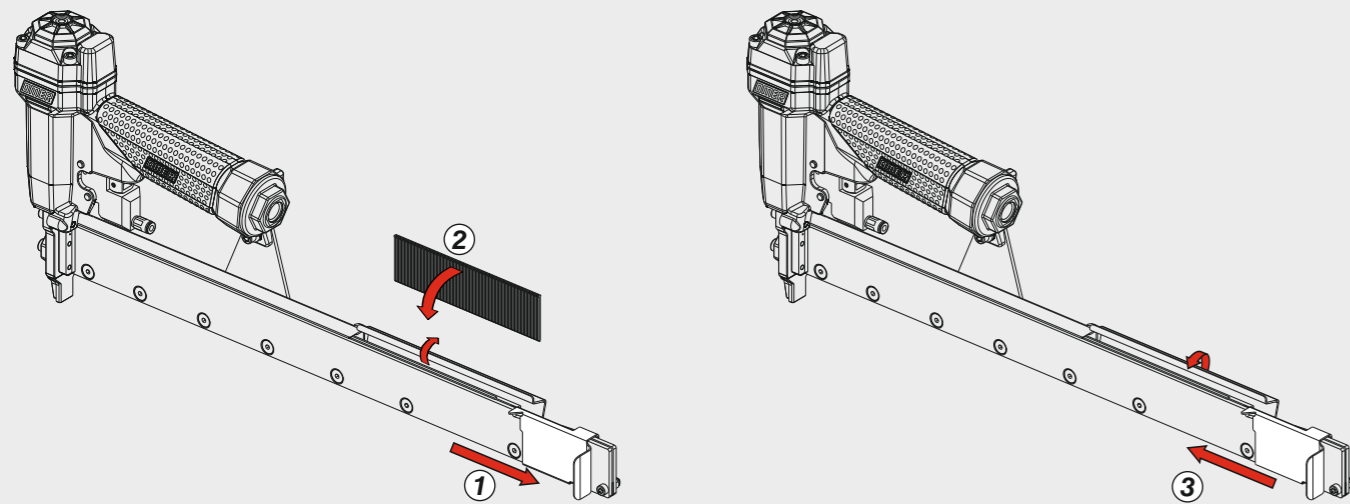


Schema di collegamento - Connecting diagram

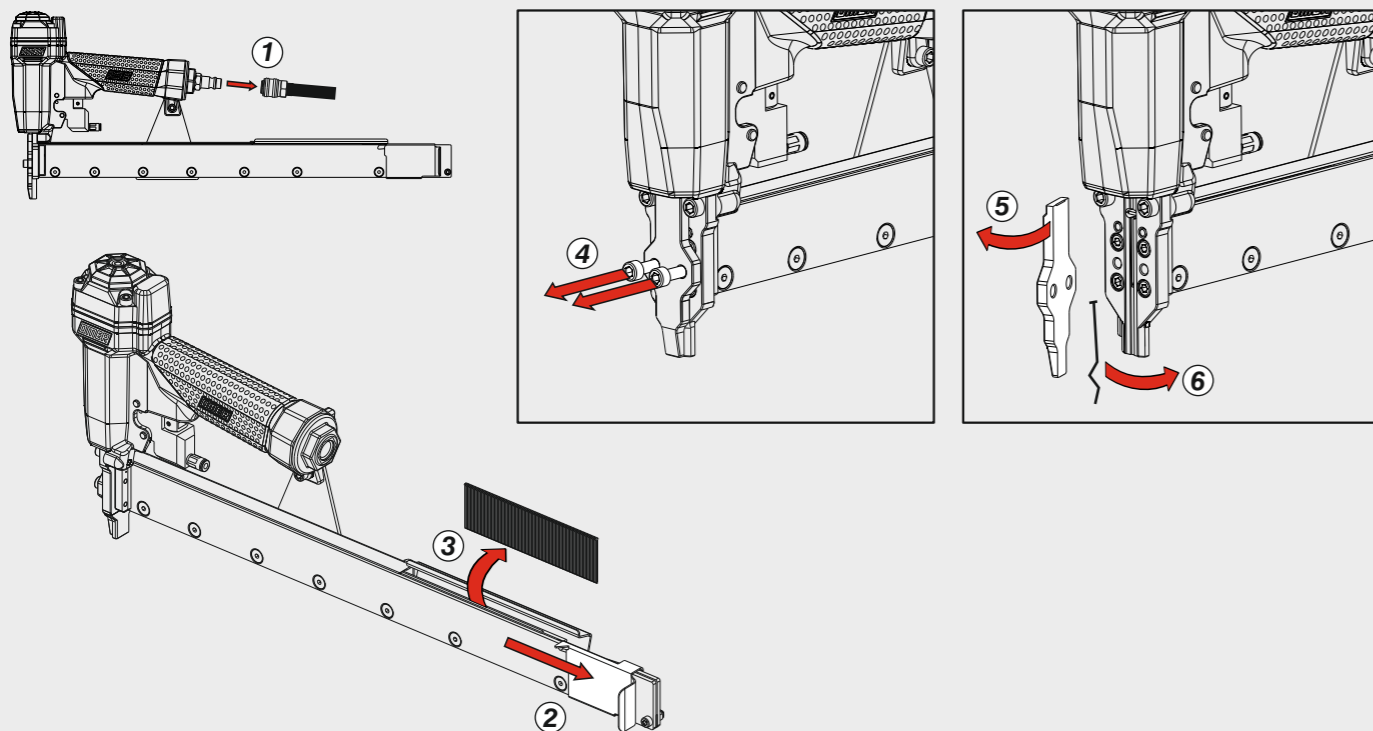


Valvola 3/2 NC
Valve 3/2 NC

Caricamento - Loading - Laden - Chargement - Carga - Γέμισμα - Carregamento - Laden - Yükleme



Disinceppamento - Jam clearing - Staubeseitigung - Décoincement - Desatascamiento - Απεμπλοκή Desencravamento - Deblokkering bij vastlopen - Sıkışma giderme



OMER®

Manuale d'uso, manutenzione e parti di ricambio
Manual for use, maintenance and spare parts
Bedienungs- und Wartungshandbuch sowie Ersatzteilleiste
Mode d'emploi, de maintenance et pièces de rechange
Manual de uso, mantenimiento y recambios
Εγχειρίδιο χρήσης, συντήρησης και ανταλλακτικών
Manual de uso, manutenção e peças sobresselentes
Handleiding voor gebruik, onderhoud en wisselstukken
Kullanım, bakım ve yedek parça kılavuzu

Parte 2
Part 2
Teil 2
Partie 2
Part 2
Μέρος 2
Parte 2
Deel 2
Kısım 2



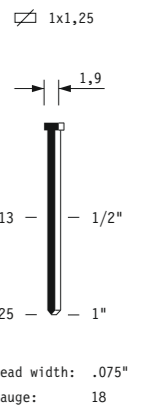
12.25 CLT3-3

cod. 12212530-3

| Dati tecnici Technical data Technische Daten | Caractéristiques techniques Datos técnicos Τεχνικά χαρακτηριστικά | Dados técnicos Technische gegevens Teknik veriler |
|--|---|---|
| Misure impiegabili mm Lengths mm Verwendbare Nagellänge mm | Dimensions utiles mm Medidas de longitud mm Μήκος Αναλωσίμου - mm | Medidas utilizáveis mm Toepasbare afmetingen mm Boy mm |
| Capacità caricatore n° punti Magazine capacity Magazinkapazität Nägel | Capacité chargeur n° de points Capacidad cargador n° puntos Δωνατοτητα γεμιστερα | Capacidade carregador n° pontos Capaciteit magazijn in aantal spijkers Dergi kapasitesi |
| Pressione d'esercizio Operating pressure Betriebsdruck | Pression d'exercice Presión de servicio Πίεση λειτουργίας | Pressão de serviço Werkdruk Çalışma basıncı |
| Consumo aria litri/colpo Air consumption litres/stroke Luftverbrauch Liter/Schuss | Consommation d'air litres/coup Consumo aire litros/golpe Κατανάλωση αέρα - λίτρα/βολή | Consumo ar litros/disparo Luchtverbruik liter/slag Litre/vuruş hava tüketimi |
| Peso kg Weight kg Gewicht kg | Poids kg Peso kg Βάρος - kg | Peso kg Gewicht in kg Ağırlık kg |
| Dimensioni mm Dimensions mm Abmessungen mm | Dimensions mm Dimensiones mm Διαστάσεις mm | Dimensões mm Afmetingen mm Boyutlar mm |
| UNI EN 12549 :2009 | UNI EN ISO 3746 :2011 | UNI EN ISO 4871 :2009 |
| Potenza sonora emessa Sound power emitted Emittierte Schallleistung | Puissance sonore émise Potencia sonora emitida Εκπεμπόμενη ηχητική ισχύς | Potência sonora emitida Geëmitteerd geluidsvermogen Çıkan ses gücü (ses desibeli) |

Tipo di punto
Type of fastener
Befestigungsmittel
Type de rivet
Tipo de punto
Τύπος αναλωσίμου
Tipo de agrafa
Type nietjes
Zimba ve çivi tipleri

Brads 12



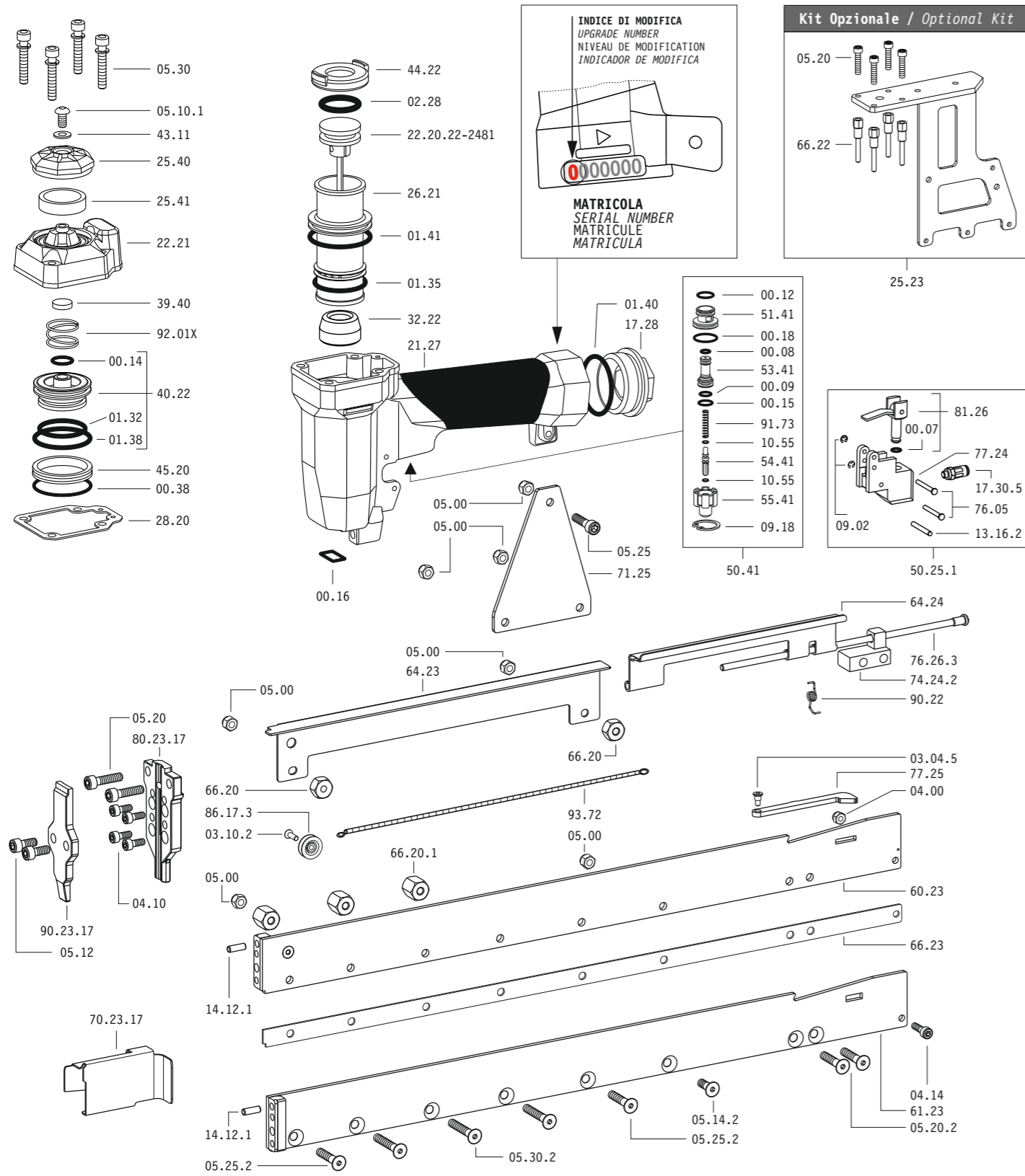
Head width: .075"
Gauge: 18

12212530-3_1225CLT3-3_2_rev20_19/01/2021

**DO NOT
HANDHELD
THIS TOOL**



Parti di ricambio - Spare parts - Ersatzteile - Pièces de rechange - Recambios
Ανταλλακτικά - Partes sobresselentes - Wisselstukken - Yedek parçalar



Dotazioni - Equipment - Ausstattung - Outillage - Dotaciones - Εξοπλισμός
Dotações - Uitrusting - Donanımlar



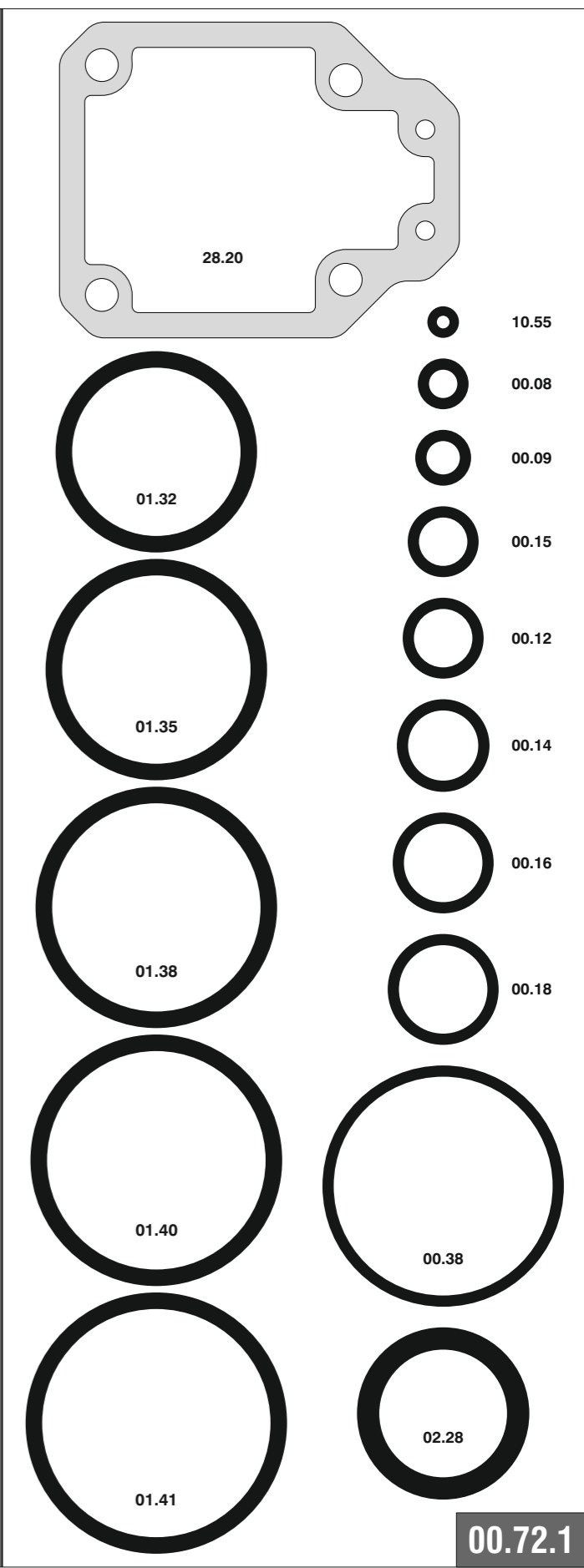
12.25 CLT3-3

cod. 12212530-3

Parti di ricambio - Spare parts - Ersatzteile - Pièces de rechange - Recambios
Ανταλλακτικά - Partes sobresselentes - Wisselstukken - Yedek parçalar

| Cod. | Descrizione | Description |
|---------------|----------------------|-----------------------|
| 00.07 | O-Ring | O-Ring |
| 00.08 | O-Ring | O-Ring |
| 00.09 | O-Ring | O-Ring |
| 00.12 | O-Ring | O-Ring |
| 00.14 | O-Ring | O-Ring |
| 00.15 | O-Ring | O-Ring |
| 00.16 | O-Ring | O-Ring |
| 00.18 | O-Ring | O-Ring |
| 00.38 | O-Ring | O-Ring |
| 01.32 | O-Ring | O-Ring |
| 01.35 | O-Ring | O-Ring |
| 01.38 | O-Ring | O-Ring |
| 01.40 | O-Ring | O-Ring |
| 01.41 | O-Ring | O-Ring |
| 02.28 | O-Ring | O-Ring |
| 03.04.5 | Vite | Screw |
| 03.10.2 | Vite | Screw |
| 04.00 | Dado | Nut |
| 04.10 | Vite | Screw |
| 04.14 | Vite | Screw |
| 05.00 | Dado | Nut |
| 05.10.1 | Vite | Screw |
| 05.12 | Vite | Screw |
| 05.14.2 | Vite | Screw |
| 05.20 | Vite | Screw |
| 05.20.2 | Vite | Screw |
| 05.25 | Vite | Screw |
| 05.25.2 | Vite | Screw |
| 05.30.2 | Vite | Screw |
| 05.30 | Vite | Screw |
| 07.30 | Chiave esagonale | Hex. bar wrench |
| 07.40 | Chiave esagonale | Hex. bar wrench |
| 09.02 | Anello elastico | Elastic ring |
| 09.18 | Anello elastico | Elastic ring |
| 10.55 | O-Ring | O-Ring |
| 13.16.2 | Spina | Pin |
| 14.12.1 | Spina | Pin |
| 17.28 | Tappo | Inlet cap |
| 17.30.5 | Attacco | Connection |
| 21.27 | Corpo | Body |
| 22.21 | Testa | Head |
| 25.23 | Supporto | Support |
| 25.40 | Deflettore | Exhaust deflector |
| 25.41 | Silenziatore | Silencer |
| 26.21 | Cilindro | Cylinder |
| 28.20 | Guarnizione testa | Head gasket |
| 32.22 | Ammortizzatore | Bumper |
| 39.40 | Guarnizione scarico | Exhaust seal |
| 40.22 | Valvola completa | Valve ass'y |
| 43.11 | Rondella | Washer |
| 44.22 | Guarnizione | Gasket |
| 45.20 | Anello valvola | Ring |
| 50.25.1 | Comando a distanza | Remote control |
| 50.41 | Pulsante completo | Trigger valve ass'y |
| 51.41 | Boccola pulsante | Trigger valve housing |
| 53.41 | Pistone servovalvola | Valve piston |
| 54.41 | Pulsante | Trigger valve |
| 55.41 | Raccordo pulsante | Bush |
| 60.23 | Guida Sx | Left guide |
| 61.23 | Guida Dx | Right guide |
| 64.23 | Carter | Hold Down |
| 64.24 | Carter Mobile | Movable Hold Down |
| 66.20 | Distanziale | Spacer |
| 66.20.1 | Distanziale | Spacer |
| 66.22 | Distanziale | Spacer |
| 66.23 | Distanziale | Spacer |
| 71.25 | Reggicaricatore | Support |
| 74.24.2 | Staffa | Stirrup |
| 76.05 | Perno | Pin |
| 76.26.3 | Perno carter | Pin |
| 77.24 | Guida | Guide |
| 77.25 | Leva | Lever |
| 81.26 | Pistoncino | Piston |
| 86.17.3 | Carrucola | Pulley |
| 90.22 | Molla | Spring |
| 91.73 | Molla | Spring |
| 92.01X | Molla | Spring |
| 93.72 | Molla | Spring |
| 22.20.22-2481 | Battente | Driver |
| 70.23.17 | Spingipunto | Pusher |
| 80.23.17 | Controtestina | Nose |
| 90.23.17 | Testina | Nose plate |
| D01 | Bocchetta olio | Oiler |

Guarnizioni - O-Rings - Dichtungen - Joints toriques - Juntas - Δακτύλιος στεγανοποίησης - Vedantes - O-ringen - Contalar



12.25 CLT3-3

cod. 12212530-3

Indice di modifica **2**
Upgrade number