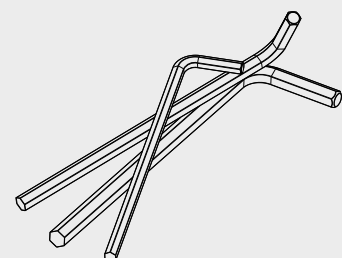
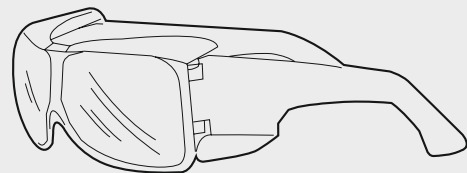
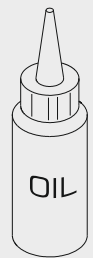
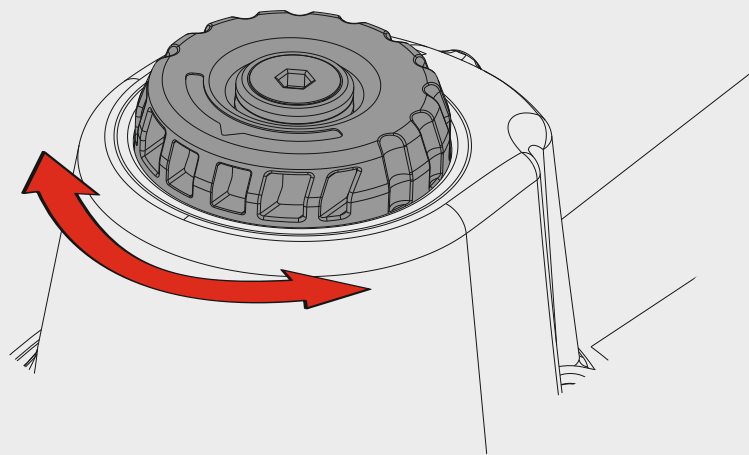


Dotazioni - Equipment - Ausstattung - Outillage - Dotaciones - Εξοπλισμός
Dotações - Uitrusting - Donanımlar



Caricamento - Loading - Laden - Chargement - Carga - Γέμισμα - Carregamento - Laden - Yükleme

Scarico orientabile a 360°
360° adjustable exhaust



Note - Notes - Hinweise - Remarques - Notas - Σημειώσεις - Observações - Opmerkingen - Notlar



| | |
|---|----------|
| Manuale d'uso, manutenzione e parti di ricambio | Parte 2 |
| Manual for use, maintenance and spare parts | Part 2 |
| Bedienungs- und Wartungshandbuch sowie Ersatzteilleiste | Teil 2 |
| Mode d'emploi, de maintenance et pièces de rechange | Partie 2 |
| Manual de uso, mantenimiento y recambios | Part 2 |
| Εγχειρίδιο χρήσης, συντήρησης και ανταλλακτικών | Μέρος 2 |
| Manual de uso, manutenção e peças sobresselentes | Parte 2 |
| Handleiding voor gebruik, onderhoud en wisselstukken | Deel 2 |
| Kullanım, bakım ve yedek parça kılavuzu | Kısım 2 |



CN23.57

cod. 195MCN2357

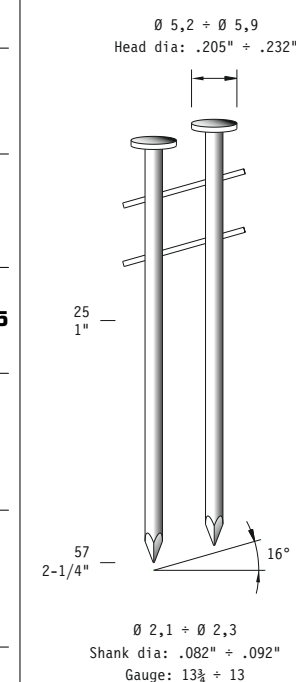


Warning: Please read the instructions and warnings for this tool carefully before use. Failure to do so could lead to serious injury.

| Dati tecnici Technical data Technische Daten | Caractéristiques techniques Datos técnicos Τεχνικά χαρακτηριστικά | Dados técnicos Technische gegevens Teknik veriler | |
|--|---|---|--|
| Misure impiegabili mm Lengths mm Verwendbare Nagellänge mm | Dimensions utiles mm Medidas de longitud mm Μήκος Αναλωσίμου - mm | Medidas utilizáveis mm Toepasbare afmetingen mm Boy mm | 25 ÷ 57 |
| Capacità caricatore n° punti Magazine capacity Magazinkapazität Nägel | Capacité chargeur n° de points Capacidad cargador n° puntos Δωσατοτητα γεμιστερα | Capacidade carregador n° pontos Capaciteit magazijn in aantal spijkers Dergi kapasitesi | 300 ÷ 350 |
| Pressione d'esercizio Operating pressure Betriebsdruck | Pression d'exercice Presión de servicio Πίεση λειτουργίας | Pressão de serviço Werkdruk Çalışma basıncı | 5 ÷ 8 bar 70 ÷ 115 psi |
| Consumo aria litri/colpo Air consumption litres/stroke Luftverbrauch Liter/Schuss | Consommation d'air litres/coup Consumo aire litros/golpe Κατανάλωση αέρα - λίτρα/βολή | Consumo ar litros/disparo Luchtverbruik liter/slag Litre/vuruş hava tüketimi | 1,70 |
| Peso kg Weight kg Gewicht kg | Poids kg Peso kg Βάρος - kg | Peso kg Gewicht in kg Ağırlık kg | 2,67 |
| Dimensioni mm Dimensions mm Abmessungen mm | Dimensions mm Dimensiones mm Διαστάσεις mm | Dimensões mm Afmetingen mm Boyutlar mm | 302x132x285 (LxWxH) |
| UNI EN 12549 :2009 UNI EN ISO 4871 :2009 Pressione sonora in pos. operatore Sound pressure in operator's position Schalldruck am Arbeitsplatz | Pression sonore poste Opérateur Presión sonora en la pos. del operador Ηχητική πίεση στη θέση του Χειριστή | Pressão sonora na posição Operador Geluidsdruk op de werkplaats Operatör pozisyonunda ses basıncı | 93,3 dB(A) (K= 2,5 dB) |
| UNI EN 12549 :2009 UNI EN ISO 3746 :2011 UNI EN ISO 4871 :2009 Potenza sonora emessa Sound power emitted Emitierte Schalleistung | Puissance sonore émise Potencia sonora emitida Εκπεμπόμενη ηχητική ισχύς | Potência sonora emitida Geëmitteerd geluidsvermogen Çıkan ses gücü (ses desibel) | 99,0 dB(A) (K= 2,5 dB) |
| UNI CEN ISO/TS 8662-11 :2006 UNI EN ISO 5349-2 :2004 UNI EN 12096 :1999 Emissione vibratoria sull'impugnatura Vibratory emissions on handle Vibrationsemission am Griff | Émission vibratoire sur la prise en main Emisión de vibraciones en la empuñadura Εκπεμπόμενες δονήσεις στη λαβή | Emissão vibratória na empunhadura Trillingsemissie op de handgreep Tutamak üzerinde vibrasyon emisyonları | 3,73 m/s² (K= 1,87 m/s ³) |

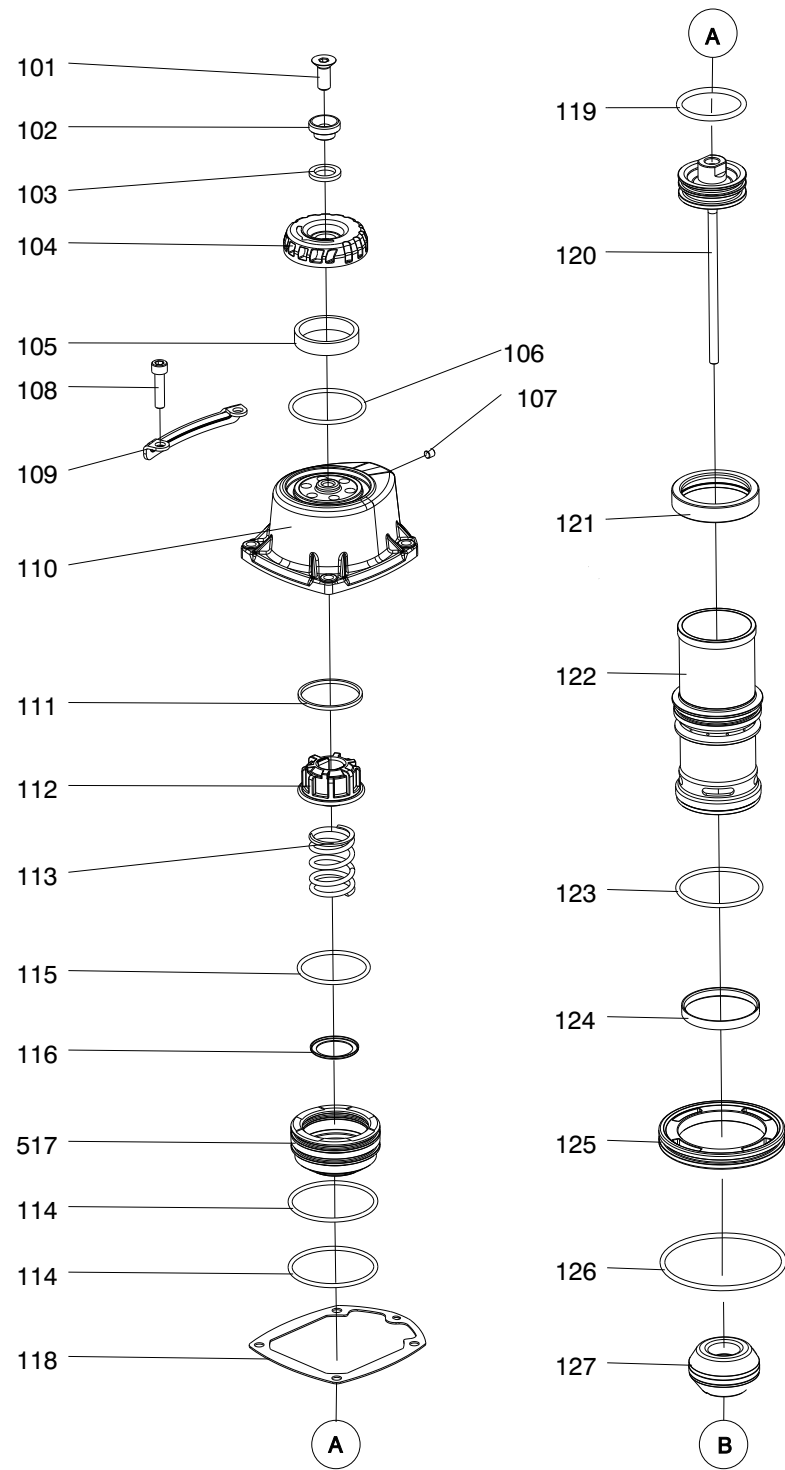
CNW203

CNW23

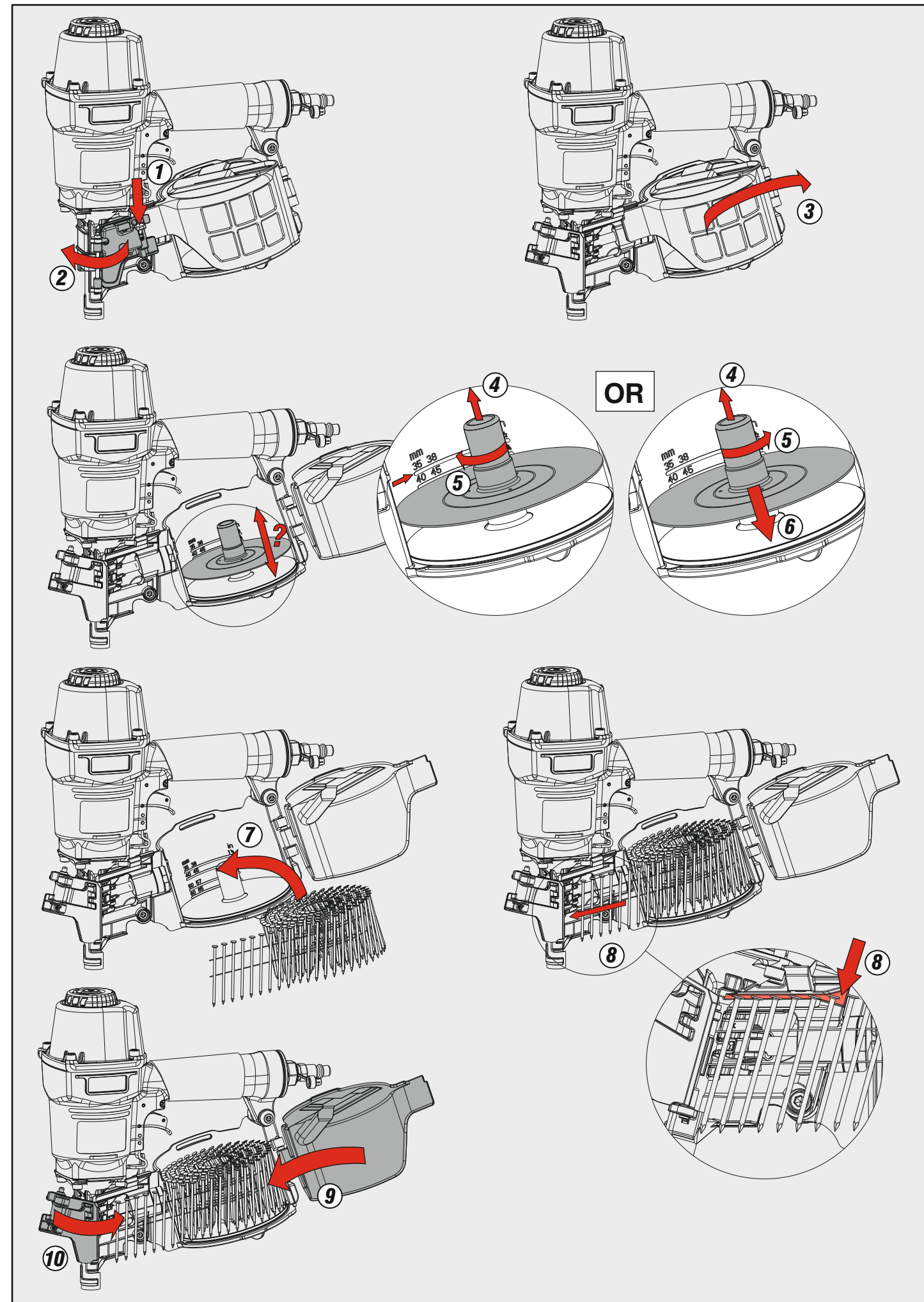


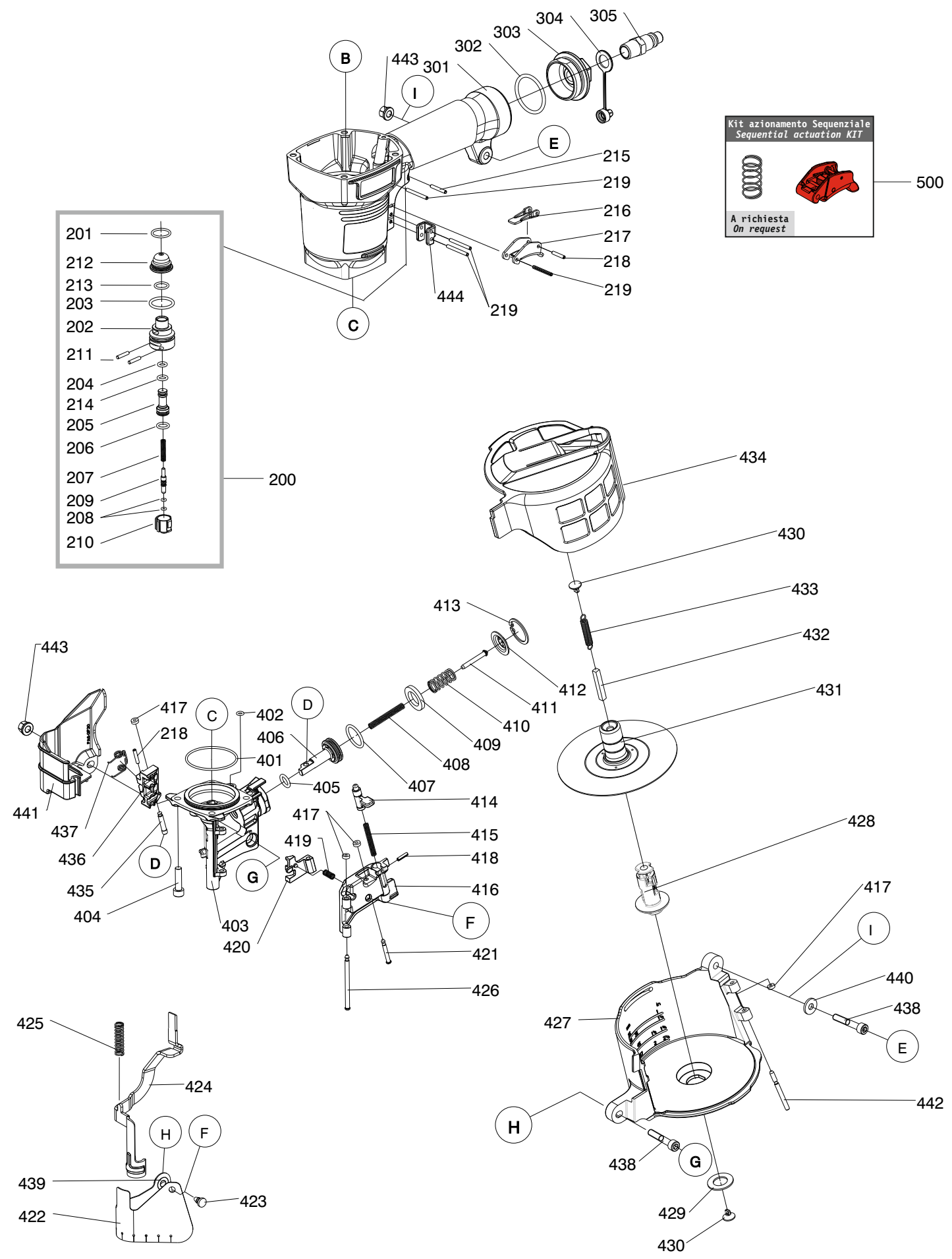
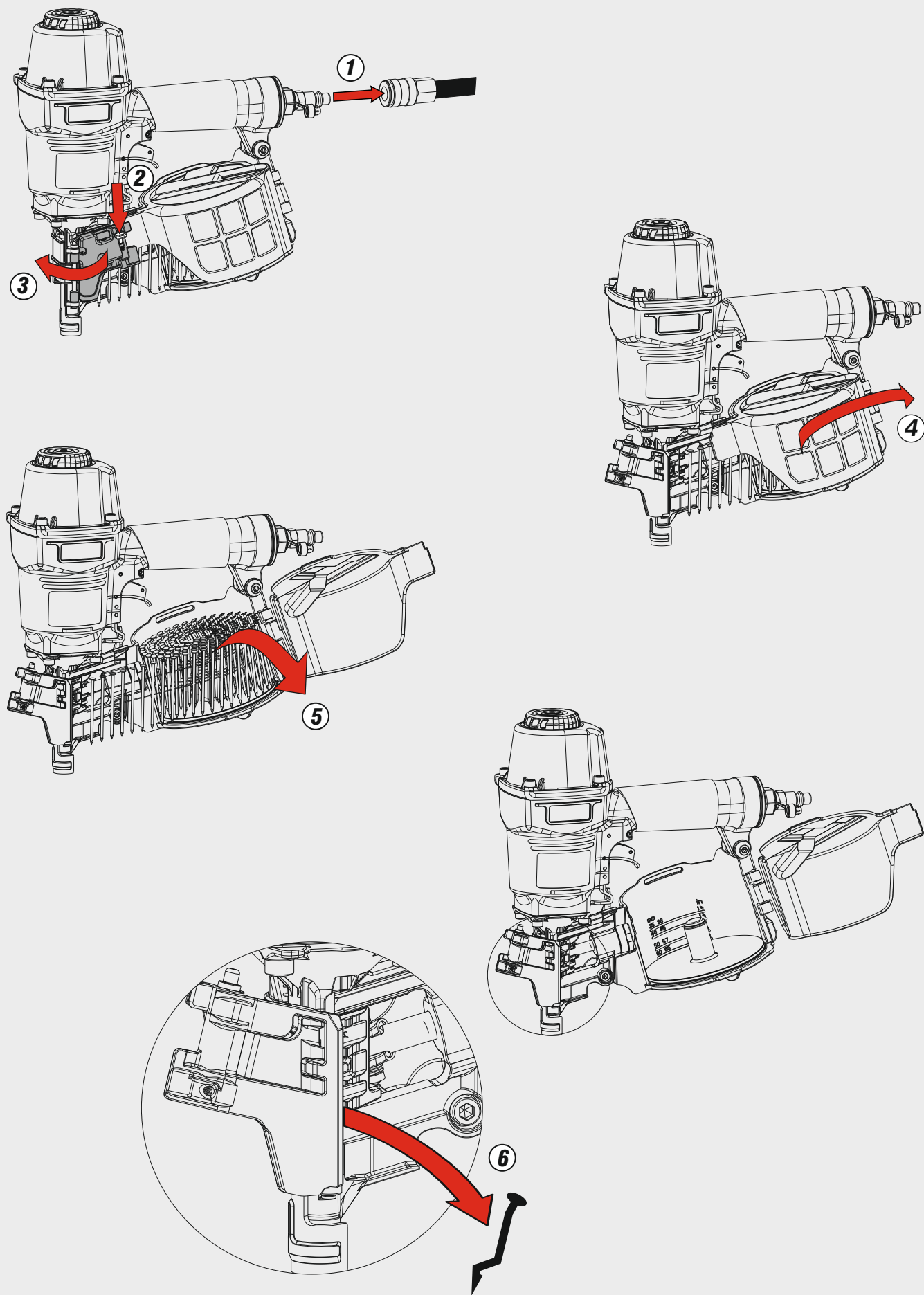
195MCN2357_CN2357_A1_rev20_02/03/2021 IV

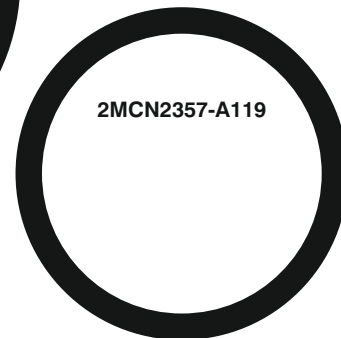
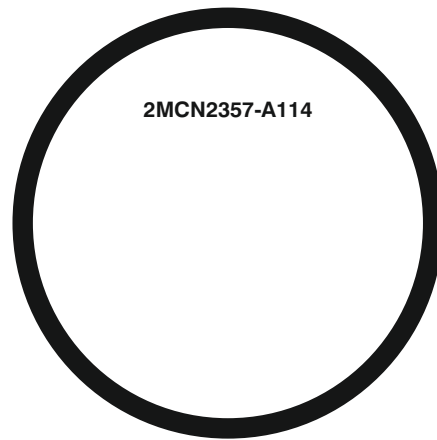
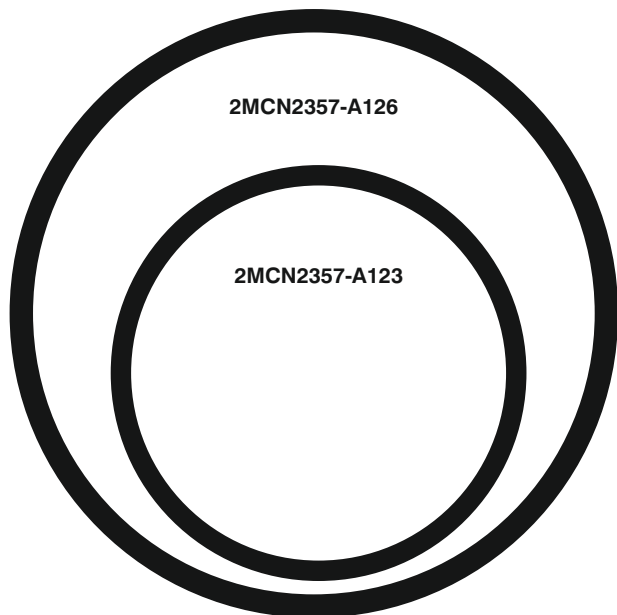
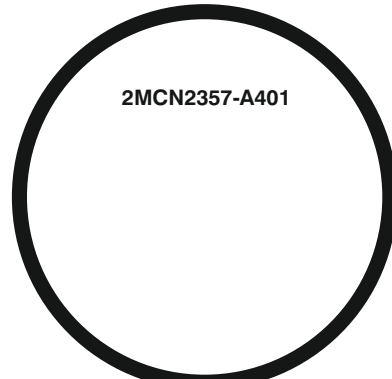
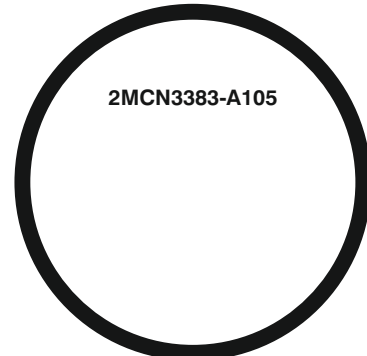
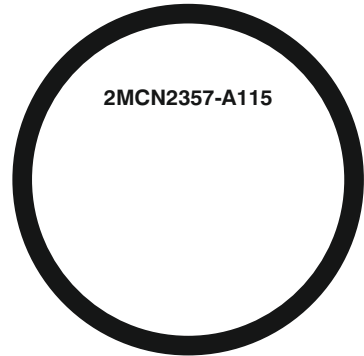
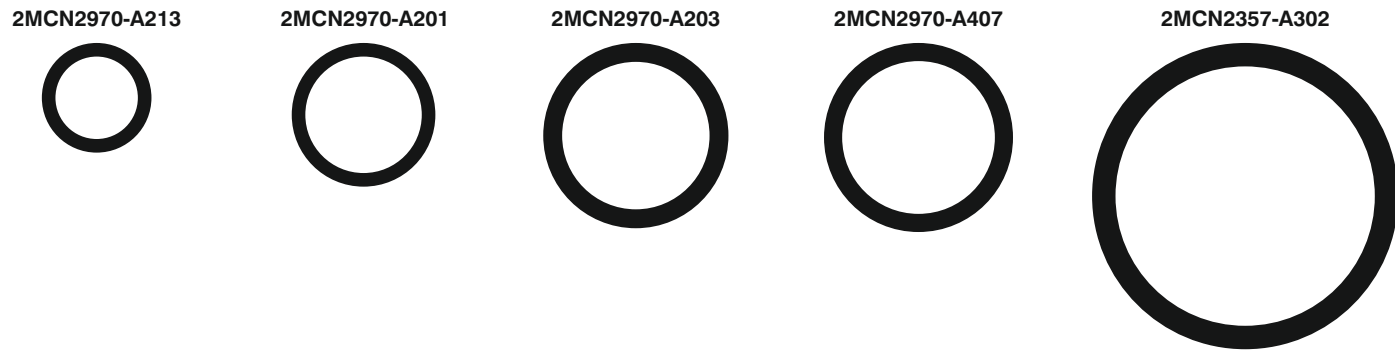
| | | |
|-----|---------------|----------------------|
| 101 | 2MCN3390-A101 | Counter Sunk Screw |
| 102 | 2MCN3383-A102 | Washer |
| 103 | 2MCN3165-A105 | Rubber Pad |
| 104 | 2MCN3383-A104 | Deflector |
| 105 | 2MCN3165-A104 | Muffler |
| 106 | 2MCN3383-A105 | O-Ring |
| 107 | 2MCN2970-A104 | Hex. Soc. Hd. Screw |
| 108 | 2MCN2357-A108 | Hex. Soc. Hd. Bolt |
| 109 | 2MCN2357-A109 | Guide Cover |
| 110 | 2MCN2357-A110 | Cap |
| 111 | 2MCN2357-A111 | Washer Seal |
| 112 | 2MCN2357-A112 | Seal |
| 113 | 2MCN2357-A113 | Compression Spring |
| 114 | 2MCN2357-A114 | O-Ring |
| 115 | 2MCN2357-A115 | O-Ring |
| 116 | 2MCN2357-A116 | Washer |
| 118 | 2MCN2357-A118 | Cylinder Cap Seal |
| 119 | 2MCN2357-A119 | O-Ring |
| 120 | 2MCN2357-A120 | Driver Unit |
| 121 | 2MCN2357-A121 | Collar |
| 122 | 2MCN2357-A122 | Cylinder |
| 123 | 2MCN2357-A123 | O-Ring |
| 124 | 2MCN2357-A124 | Cylinder Ring |
| 125 | 2MCN2357-A125 | Cylinder Spacer |
| 126 | 2MCN2357-A126 | O-Ring |
| 127 | 2MCN2357-A127 | Bumper |
| 200 | 2MCN2970-A200 | Trigger Valve Unit |
| 201 | 2MCN2970-A201 | O-Ring |
| 202 | 2MCN2970-A202 | Plunger Cap |
| 203 | 2MCN2970-A203 | O-Ring |
| 204 | 2MCN3165-A205 | O-Ring |
| 205 | 2MCN2970-A205 | Valve Plunger |
| 206 | 2MCN3165-A206 | O-Ring |
| 207 | 2MCN2970-A207 | Spring |
| 208 | 2MCN2970-A208 | O-Ring |
| 209 | 2MCN2357-A209 | Plunger |
| 210 | 2MCN2970-A210 | Trigger Valve Head |
| 211 | 2MCN2970-A211 | Pin |
| 212 | 2MCN2970-A212 | Cover-Plunger |
| 213 | 2MCN2970-A213 | O-Ring |
| 214 | 2MCN2970-A214 | O-Ring |
| 215 | 2MCN2970-A215 | Spiral Pins |
| 216 | 2MCN2970-A216 | Secondary Trigger |
| 217 | 2MCN2357-A217 | Trigger |
| 218 | 2MCN3165-A216 | Spring Pin |
| 219 | 2MCN2357-A219 | Spiral Pins |
| 301 | 2MCN2357-A301 | Gun Body Unit |
| 302 | 2MCN2357-A302 | O-Ring |
| 303 | 2MCN2357-A303 | End Cap |
| 304 | 2MCN3165-A304 | Dusty Cover |
| 305 | 2MCN3165-A305 | Air Plug |
| 401 | 2MCN2357-A401 | O-Ring |
| 402 | 2MCN2970-A402 | O-Ring |
| 403 | 2MCN2357-A403 | Nose Piece |
| 404 | 2MCN3165-A429 | Hex. Soc. Hd. Bolt |
| 405 | 2MCN3390-A409 | O-Ring |
| 406 | 2MCN2357-A406 | Feed Piston |
| 407 | 2MCN2970-A407 | O-Ring |
| 408 | 2MCN2357-A408 | Pusher Spring B |
| 409 | 2MCN2357-A409 | Feed Bumper |
| 410 | 2MCN2357-A410 | Pusher Spring |
| 411 | 2MCN2357-A411 | Rod |
| 412 | 2MCN2357-A412 | Feed Piston Cap |
| 413 | 2MCN2970-A411 | C-Ring |
| 414 | 2MCN2970-A413 | Door Latch |
| 415 | 2MCN2970-A414 | Latch Spring |
| 416 | 2MCN2357-A416 | Door |
| 417 | 2MCN2970-A416 | Pu Retainer |
| 418 | 2MCN3165-A211 | Spring Pin |
| 419 | 2MCN2970-A418 | Stopper Finger Sprin |
| 420 | 2MCN2357-A420 | Nail Stop |
| 421 | 2MCN2357-A421 | Pin-Nail Stop |
| 422 | 2MCN2357-A422 | Muzzle Protector |
| 423 | 2MCN2970-A422 | Dust Shield Plug |
| 424 | 2MCN2357-A424 | Safety |
| 425 | 2MCN2357-A425 | Safety Spring |
| 426 | 2MCN2357-A426 | Door Shaft Pin |
| 427 | 2MCN2357-A427 | Magazine Case |
| 428 | 2MCN3383-A426 | Magaeing Post |
| 429 | 2MCN3383-A427 | Rubber Ring |
| 430 | 2MCN2970-A429 | Spring Base |
| 431 | 2MCN2357-A431 | Spacer |



| | | |
|-----|---------------|----------------------------|
| 432 | 2MCN2970-A432 | Spacer |
| 433 | 2MCN2970-A433 | Pull Spring |
| 434 | 2MCN2357-A434 | Magazine Cover |
| 435 | 2MCN2970-A435 | Pin Feed Piston |
| 436 | 2MCN2357-A436 | Feed Finger 2.1 / 2.3 Flat |
| 437 | 2MCN2970-A437 | Feed Finger Spring |
| 438 | 2MCN2357-A438 | Hex. Soc. Hd. Bolt |
| 439 | 2MCN2357-A439 | Protector Washer |
| 440 | 2MCN2970-A440 | Flat Washer |
| 441 | 2MCN2357-A441 | Spring Cover |
| 442 | 2MCN2357-A442 | Magazine Shaft Pin |
| 443 | 2MCN2970-A442 | Bolt Cap |
| 444 | 2MCN2565-A444 | Safety Guide |
| 500 | 2MSN2213-K216 | Sequential actuation KIT |
| 517 | 2MCN2357-A517 | Hd.Valve Piston |







2MCN2357-K100

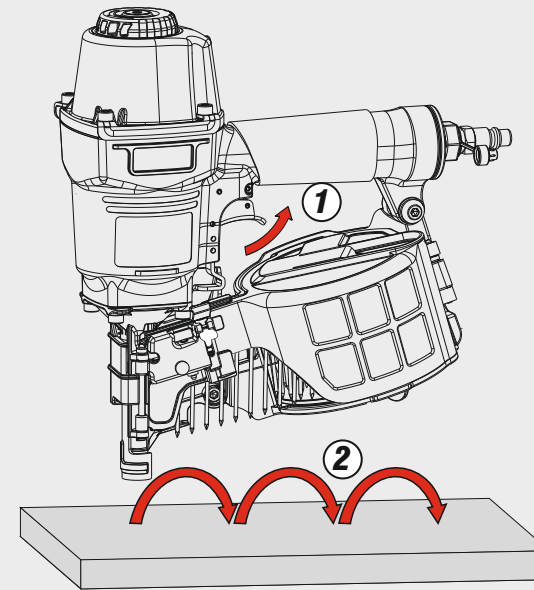


Di serie / Standard

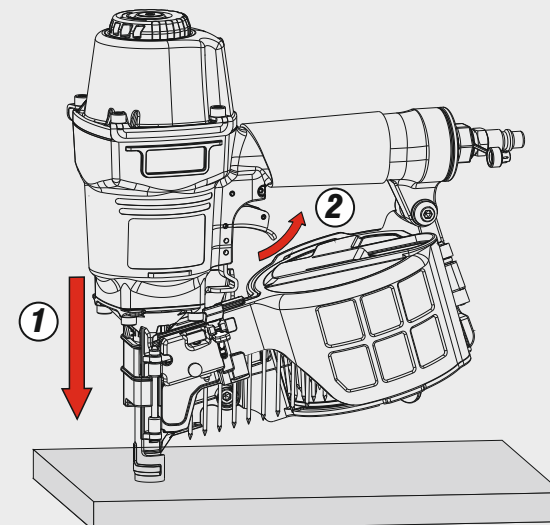


A richiesta / On request

Azionamento a contatto
 Contact actuation



Oppure - Or



Azionamento sequenziale singolo
 Single sequential actuation

