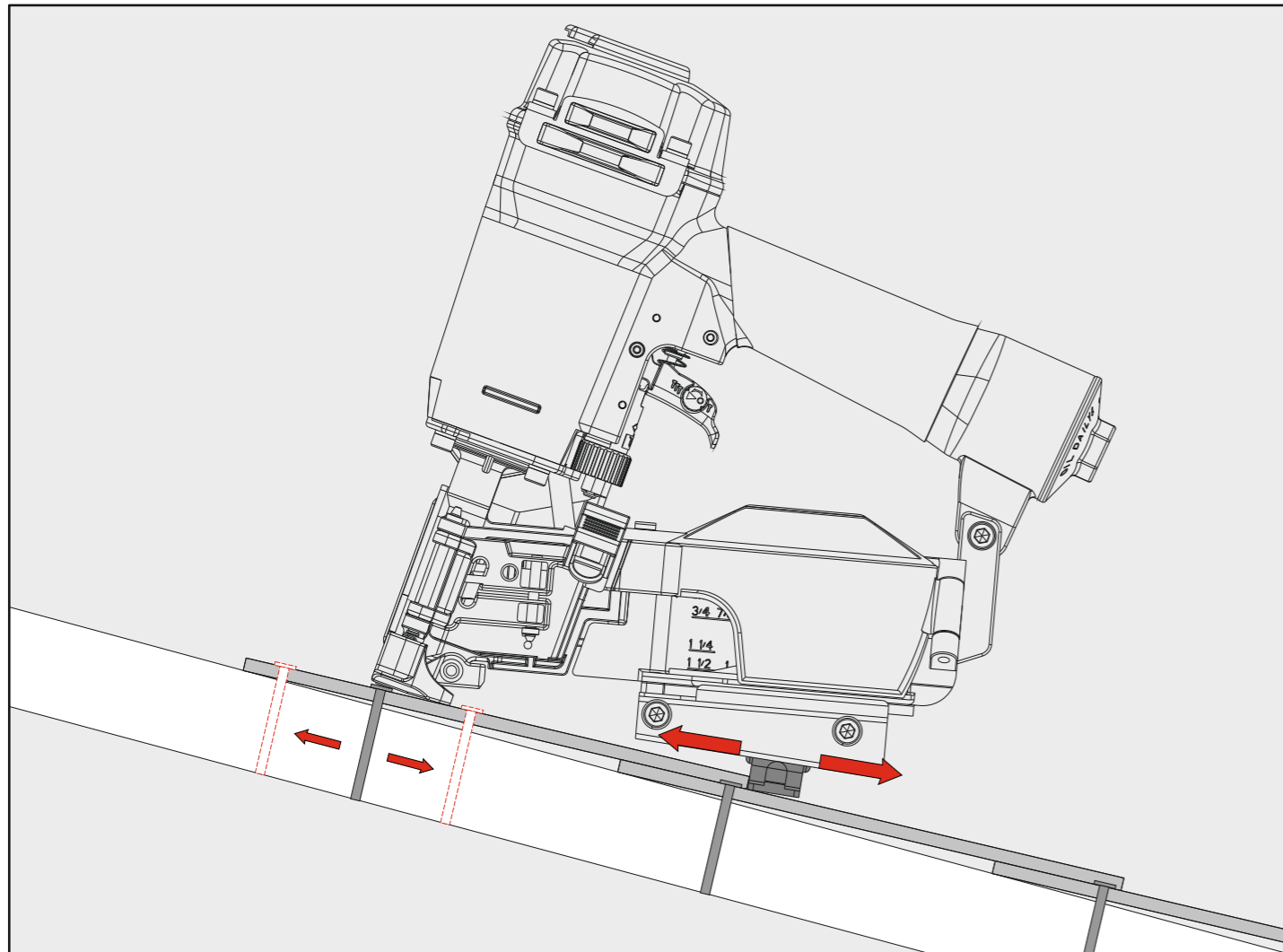
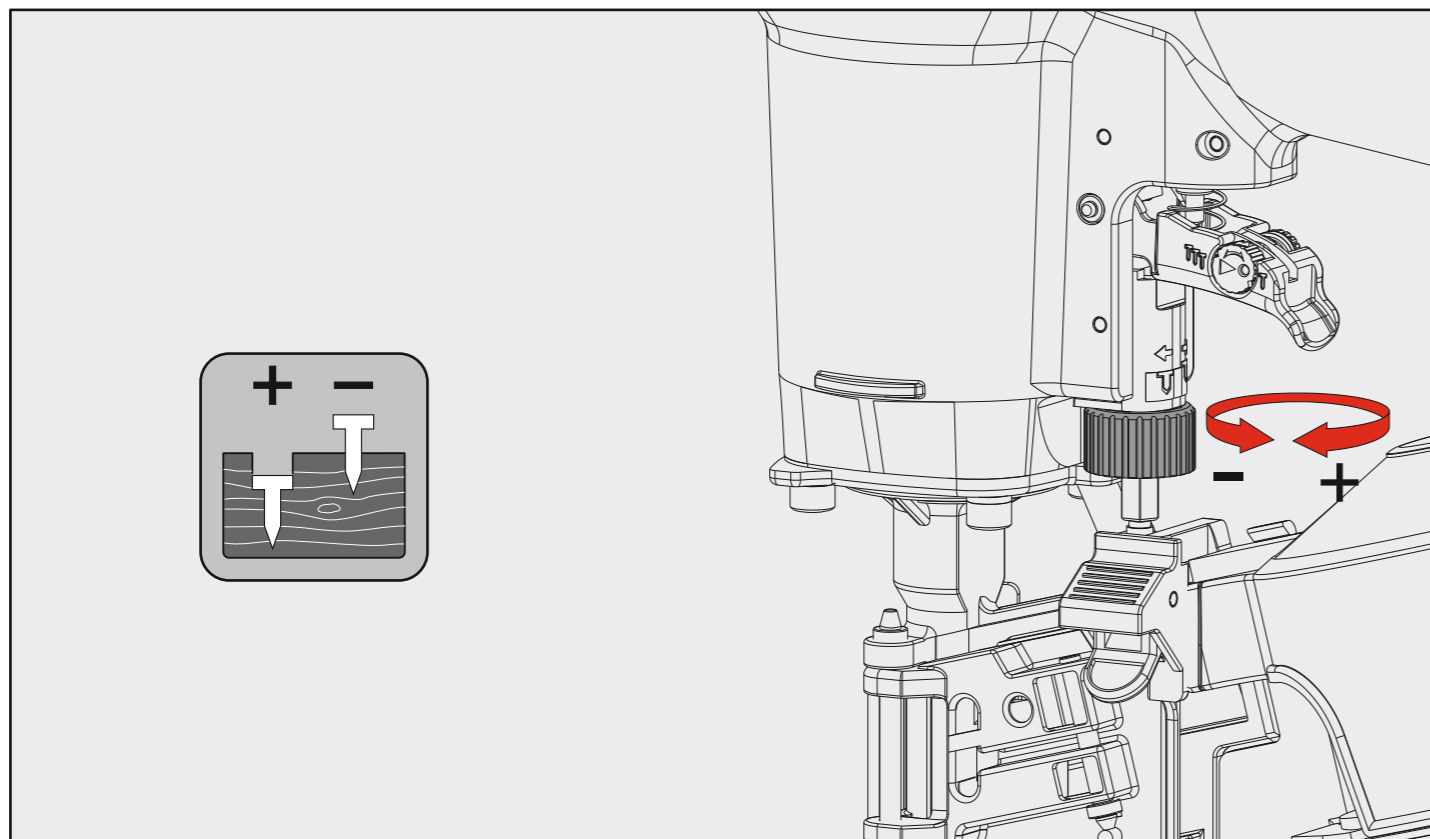


Regolazione distanziale - Spacer adjustment



Regolazione di profondità - Depth adjustment - Tiefeneinstellung - Réglage des dimensions - Réglage des dimensions Ρύθμιση βάθους - Regulação de profundidade - Diepte afstelling - Derinlik ayarı



| | |
|---|-----------------|
| Manuale d'uso, manutenzione e parti di ricambio | Parte 2 |
| Manual for use, maintenance and spare parts | Part 2 |
| Bedienungs- und Wartungshandbuch sowie Ersatzteilliste | Teil 2 |
| Mode d'emploi, de maintenance et pièces de rechange | Partie 2 |
| Manual de uso, mantenimiento y recambios | Part 2 |
| Εγχειρίδιο χρήσης, συντήρησης και ανταλλακτικών | Μέρος 2 |
| Manual de uso, manutenção e peças sobresselentes | Parte 2 |
| Handleiding voor gebruik, onderhoud en wisselstukken | Deel 2 |
| Kullanım, bakım ve yedek parça kılavuzu | Kısım 2 |



CN31.45

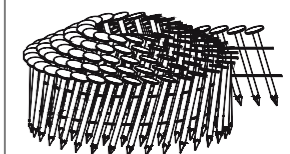
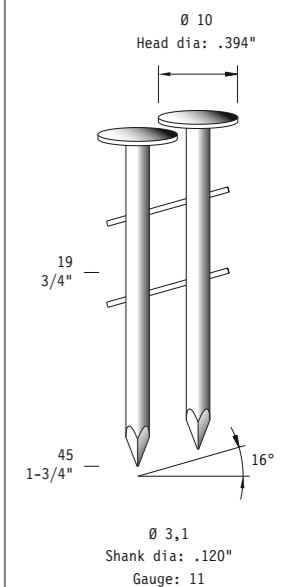
cod. 195MCN3145



Warning: Please read the instructions and warnings for this tool carefully before use. Failure to do so could lead to serious injury.

| Dati tecnici Technical data Technische Daten | Caractéristiques techniques Datos técnicos Τεχνικά χαρακτηριστικά | Dados técnicos Technische gegevens Teknik verier | |
|---|---|---|--|
| Misure impiegabili mm Lengths mm Verwendbare Nagellänge mm | Dimensions utiles mm Medidas de longitud mm Μήκος Αναλωσίμου - mm | Medidas utilizáveis mm Toepasbare afmetingen mm Boy mm | 19 ÷ 45 |
| Capacità caricatore n° punti Magazine capacity Magazinkapazität Nägel | Capacité chargeur n° de points Capacidad cargador n° puntos Δωνατοτητα γεμιστερα | Capacidade carregador n° pontos Capaciteit magazijn in aantal spijkers Dergi kapasitesi | 120 |
| Pressione d'esercizio Operating pressure Betriebsdruck | Pression d'exercice Presión de servicio Πίεση λειτουργίας | Pressão de serviço Werkdruk Çalışma basıncı | 5 ÷ 8 bar 70 ÷ 115 psi |
| Consumo aria litri/colpo Air consumption litres/stroke Luftverbrauch Liter/Schuss | Consommation d'air litres/coup Consumo aire litros/golpe Κατανάλωση αέρα - λίτρα/βολή | Consumo ar litros/disparo Luchtverbruik liter/slag Litre/vuruş hava tüketimi | 1,65 |
| Peso kg Weight kg Gewicht kg | Poids kg Peso kg Βάρος - kg | Peso kg Gewicht in kg Ağırlık kg | 2,00 |
| Dimensioni mm Dimensions mm Abmessungen mm | Dimensions mm Dimensiones mm Διαστάσεις mm | Dimensões mm Afmetingen mm Boyutlar mm | 287x116x273 (LxWxH) |
| UNI EN 12549 :2009 UNI EN ISO 4871 :2009 | | | |
| Pressione sonora in pos. operatore Sound pressure in operator's position Schalldruck am Arbeitsplatz | Pression sonore poste Opérateur Presión sonora en la pos. del operador Ηχητική πίεση στη θέση του Χειριστή | Pressão sonora na posição Operador Geluidsdruk op de werkplaats Operatör pozisyonunda ses basıncı | 99,9 dB(A) (K= 2,5 dB) |
| UNI EN 12549 :2009 UNI EN ISO 3746 :2011 UNI EN ISO 4871 :2009 | | | |
| Potenza sonora emessa Sound power emitted Emittierte Schalleistung | Puissance sonore émise Potencia sonora emitida Εκπεμπόμενη ηχητική ισχύς | Potência sonora emitida Geëmitteerd geluidsvermogen Çıkan ses gücü (ses desibel) | 102,9 dB(A) (K= 2,5 dB) |
| UNI CEN ISO/TS 8662-11 :2006 UNI EN ISO 5349-2 :2004 UNI EN 12096 :1999 | | | |
| Emissione vibratoria sull'impugnatura Vibratory emissions on handle Vibrationsemission am Griff | Émission vibratoire sur la prise en main Emisión de vibraciones en la empuñadura Εκπεμπόμενες δονήσεις στη λαβή | Emissão vibratória na empunhadura Trillingsemissie op de handgreep Tutamak üzerinde vibrasyon emisyonları | 2,53 m/s² (K= 1,26 m/s ²) |

RCNW31

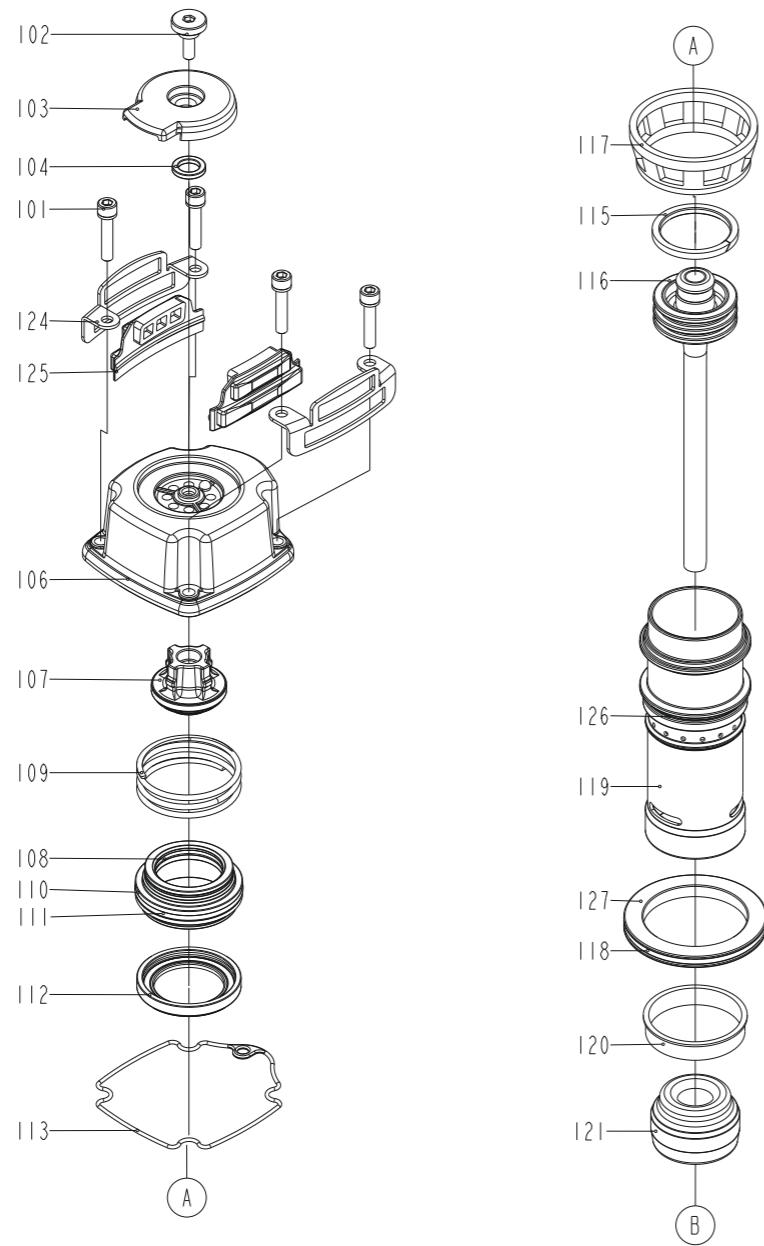


Tipo di punto - Type of fastener - Befestigungsmittel - Type de punto - Τύπος αναλωσίμου - Tipo de agrifo - Type nietjes - Zimba ve çivi tipleri

195MCN3145_CN3145_A2_rev20_18/09/2023 DV

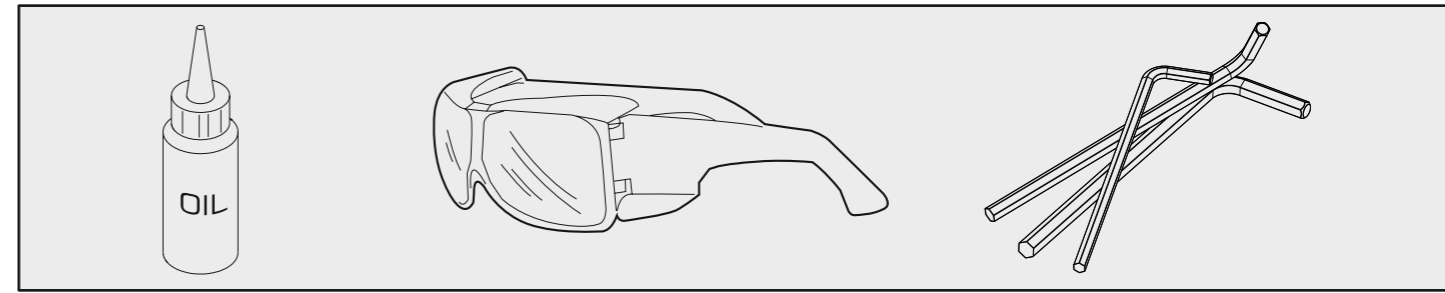
Ref. No. Part No. Description

| | | |
|-----|---------------|-----------------------|
| 101 | 2MDB1564-A105 | Bolt Assy |
| 102 | 2MDB1564-A101 | Deflector Bolt |
| 103 | 2MA2890-A115 | Collar |
| 104 | 2MDB1564-A102 | Rubber Pad |
| 106 | 2MCN3145-A106 | Cap |
| 107 | 2MCN3145-A107 | Seal |
| 108 | 2MCN3145-A108 | O-Ring |
| 109 | 2MCN3145-A109 | Compression Spring |
| 110 | 2MCN3145-A110 | Hd.Valve Piston |
| 111 | 2MCN3145-A111 | O-Ring |
| 112 | 2MCN3145-A112 | Collar |
| 113 | 2MCN3145-A113 | Packing |
| 115 | 2MCN3145-A115 | Gasket |
| 116 | 2MCN3145-A116 | Driver Unit |
| 117 | 2MCN3145-A117 | Cylinder Press Ring |
| 118 | 2MCN3145-A118 | O-Ring |
| 119 | 2MCN3145-A119 | Cylinder |
| 120 | 2MCN3145-A120 | Cylinder Ring |
| 121 | 2MCN3145-A121 | Bumper |
| 124 | 2MCN3145-A124 | Guide Cover |
| 125 | 2MCN3145-A125 | Protective Cushion |
| 126 | 2MCN3145-A126 | O-Ring |
| 127 | 2MCN3145-A127 | Cylinder Spacer |
| 200 | 2MCN3165-A200 | Trigger Valve Unit |
| 201 | 2MCN3165-A201 | O-Ring |
| 202 | 2MCN3165-A202 | O-Ring |
| 203 | 2MCN3165-A203 | Plunger Cap |
| 204 | 2MCN3165-A204 | Valve Plunger |
| 205 | 2MCN3165-A205 | O-Ring |
| 206 | 2MCN3165-A206 | O-Ring |
| 207 | 2MCN3165-A207 | Spring |
| 208 | 2MCN2550-A208 | Plunger |
| 209 | 2MCN3165-A209 | O-Ring |
| 210 | 2MCN3165-A210 | Trigger Valve Head |
| 211 | 2MCN3165-A211 | Spring Pin |
| 212 | 2MCN3165-A212 | Spring Pin |
| 213 | 2MCN3165-A213 | Spring Pin |
| 214 | 2MCN3145-A214 | Trigger Unit |
| 216 | 2MCN3390-A216 | Trigger Pivot Pin |
| 217 | 2MCN3165-A416 | Urethane Retainer |
| 222 | 2MCN2550-A214 | Spring |
| 301 | 2MCN3145-A301 | Gun Body Unit |
| 302 | 2MCN3165-A303 | O-Ring |
| 303 | 2MCN2550-C302 | End Cap |
| 401 | 2MCN3145-A401 | Nose Piece |
| 402 | 2MCN3165-A439 | O-Ring |
| 403 | 2MCN3145-A403 | O-Ring |
| 404 | 2MCN3145-A404 | Feed Finger |
| 405 | 2MA2890-A305 | Bolt Assy |
| 406 | 2MCN3145-A406 | Feed Piston |
| 407 | 2MCN3165-A418 | Pin Feed Piston |
| 408 | 2MCN3145-A408 | Feed Finger Spring |
| 409 | 2MCN3165-A414 | Pu Retainer |
| 410 | 2MCN3165-A404 | O-Ring |
| 411 | 2MCN3145-A411 | O-Ring |
| 412 | 2MCN2132-A407 | Feed Piston Spring |
| 413 | 2MCN3145-A413 | Feed Bumper |
| 414 | 2MCN3145-A414 | Feed Piston Cap |
| 415 | 2MDB1564-A429 | Bolt Assy |
| 416 | 2MCN3145-A416 | First Stopper Finger |
| 417 | 2MCN3145-A417 | Second Stopper Finger |
| 418 | 2MCN3145-A418 | Spring |
| 419 | 2MCN3165-A426 | Stopper Finger Spring |
| 420 | 2MCN3145-A420 | Pin-nail Stop |
| 421 | 2MCN3145-A421 | Door |
| 422 | 2MCN3145-A422 | Door Shaft Spring |
| 423 | 2MS29130-A435 | E-Ring |
| 424 | 2MCN3145-A424 | Latch Spring |
| 425 | 2MCN3145-A425 | Lock Lever |
| 426 | 2MDA64-A428 | Spring Pin |
| 427 | 2MCN3145-A427 | Magazine Cover |
| 428 | 2MCN3145-A428 | Protection |
| 429 | 2MCN3145-A429 | Spring Base A |
| 430 | 2MCN3145-A430 | Pull Spring |
| 431 | 2MCN3145-A431 | Spacer |
| 432 | 2MCN3145-A432 | Adjust Post |
| 433 | 2MCN3145-A433 | Magazine Case |
| 434 | 2MCN2132-A430 | O-Ring |
| 435 | 2MCN2132-A420 | Pin |
| 436 | 2MCN3390-A439 | Latch Spring Bushing |
| 437 | 2MCN3145-A437 | Hex. Soc. Hd. Bolt |
| 438 | 2MCN2970-A440 | Flat Washer |
| 439 | 2MCN3145-A439 | Tap Bolt |
| 440 | 2MCN3165-A448 | Spring Base |
| 441 | 2MCN3145-A441 | Adjusting Unit |



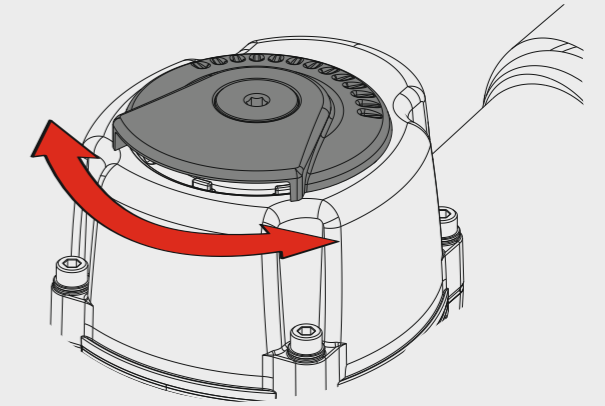
| | | |
|-----|---------------|--------------------|
| 442 | 2MCN3145-A442 | Magazine Guard |
| 443 | 2MCN3145-A443 | Bolt Assy |
| 444 | 2MSN2210-A439 | Lock Nut |
| 445 | 2MCN3145-A445 | Adjusting Plate |
| 446 | 2MCN3145-A446 | Hex. Soc. Hd. Bolt |
| 447 | 2MCN3145-A447 | Safety B |
| 448 | 2MCN3145-A448 | Safety Guide |
| 449 | 2MCN3145-A449 | Safety Stopper |
| 450 | 2MCN3145-A450 | Safety Spring |
| 451 | 2MCN3145-A451 | Feed Bumper |
| 452 | 2MCN3145-A452 | Adjust Axie |
| 453 | 2MCN3145-A453 | Adjust Rod |
| 454 | 2MCN3145-A454 | Safety Unit |
| 455 | 2MCN3145-A455 | Guide Block |
| 456 | 2MCN3145-A456 | Fixed Pin |
| 457 | 2MCN3145-A457 | O-Ring |

Dotazioni - Equipment - Ausstattung - Outillage - Dotaciones - Εξοπλισμός
Dotações - Uitrusting - Donanımlar

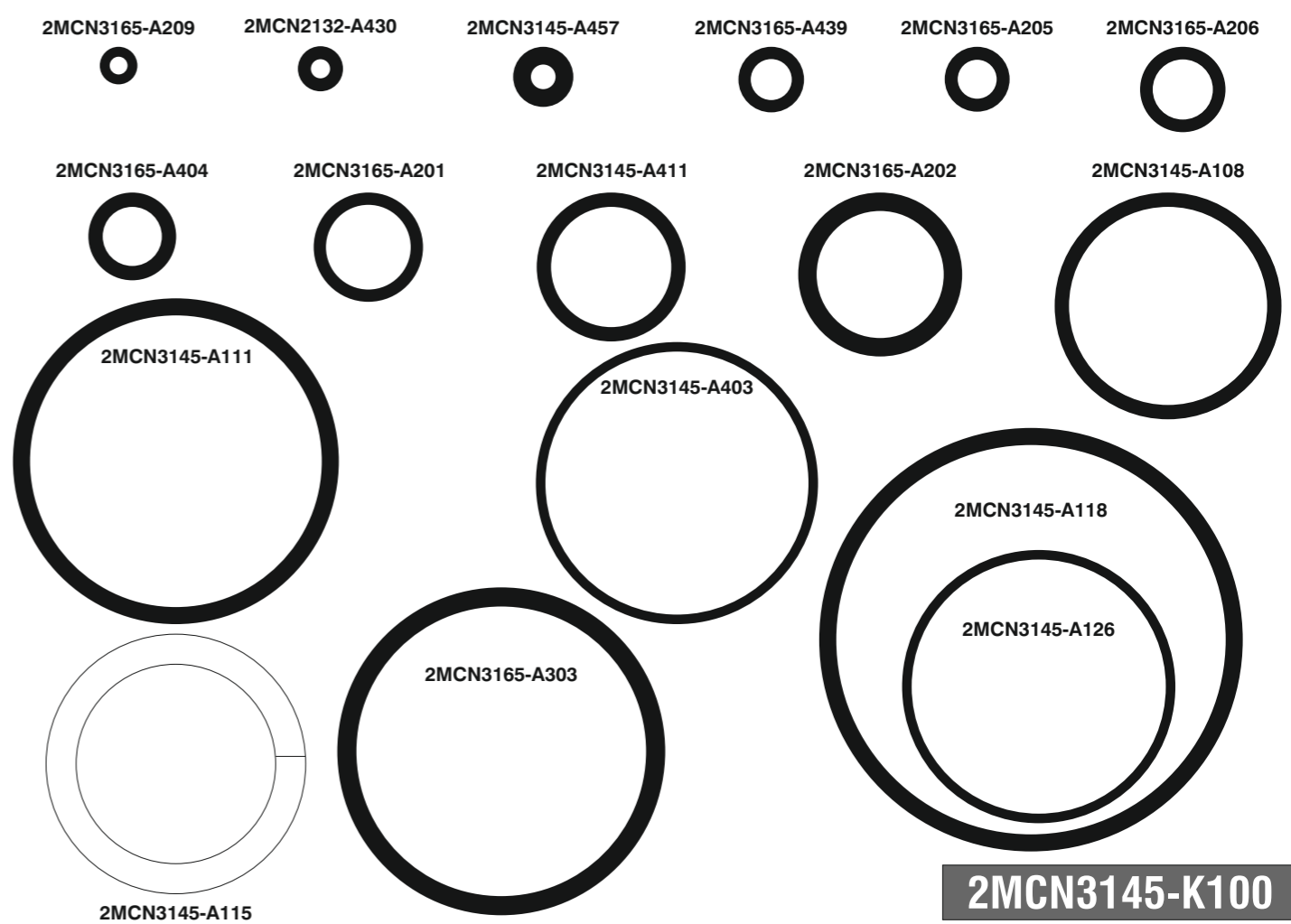


Caratteristiche - Features - Merkmale - Caractéristiques - Características - Χαρακτηριστικά - Características - Kenmerken - Özellikler

Scarico orientabile a 360°
360° adjustable exhaust

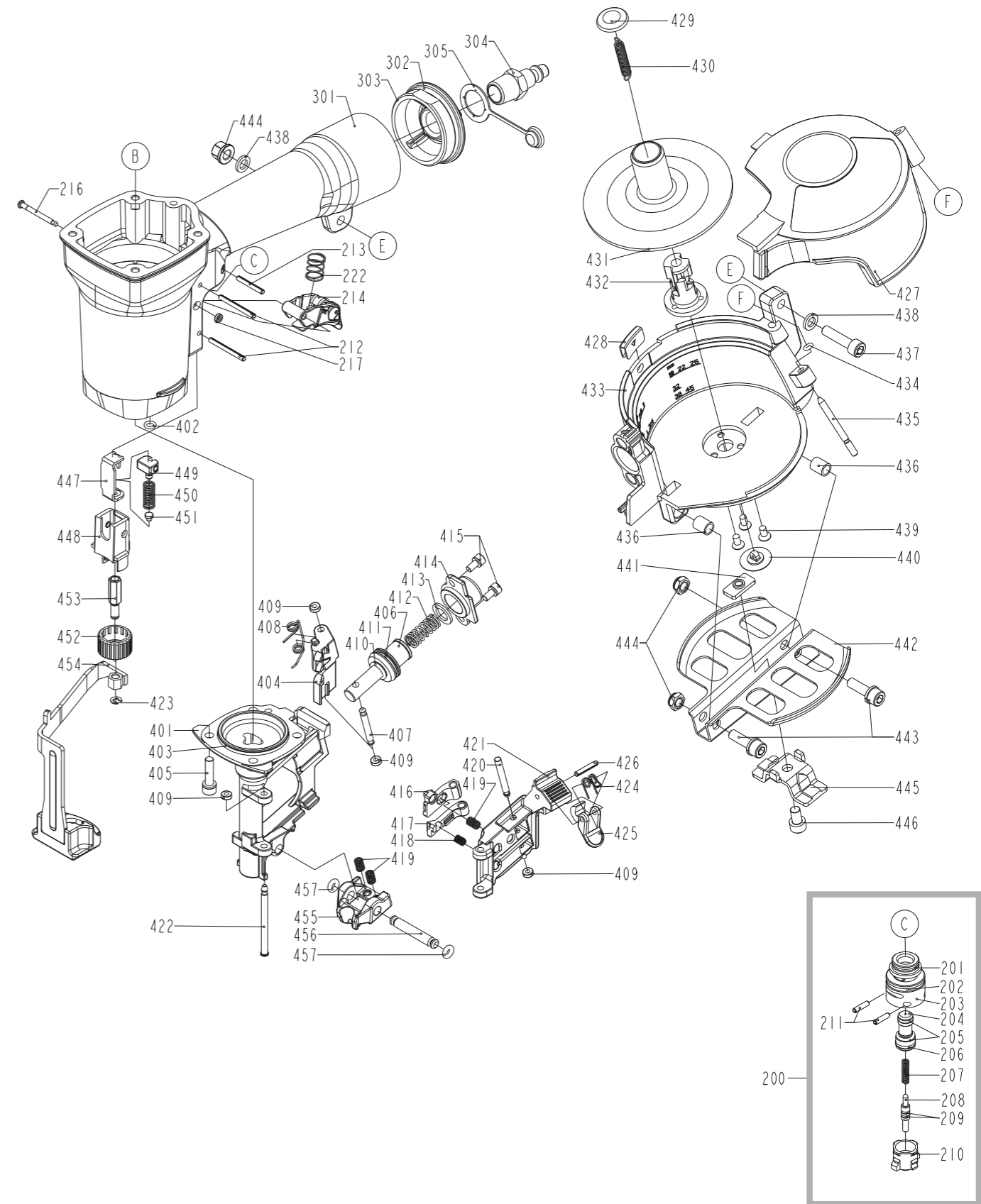
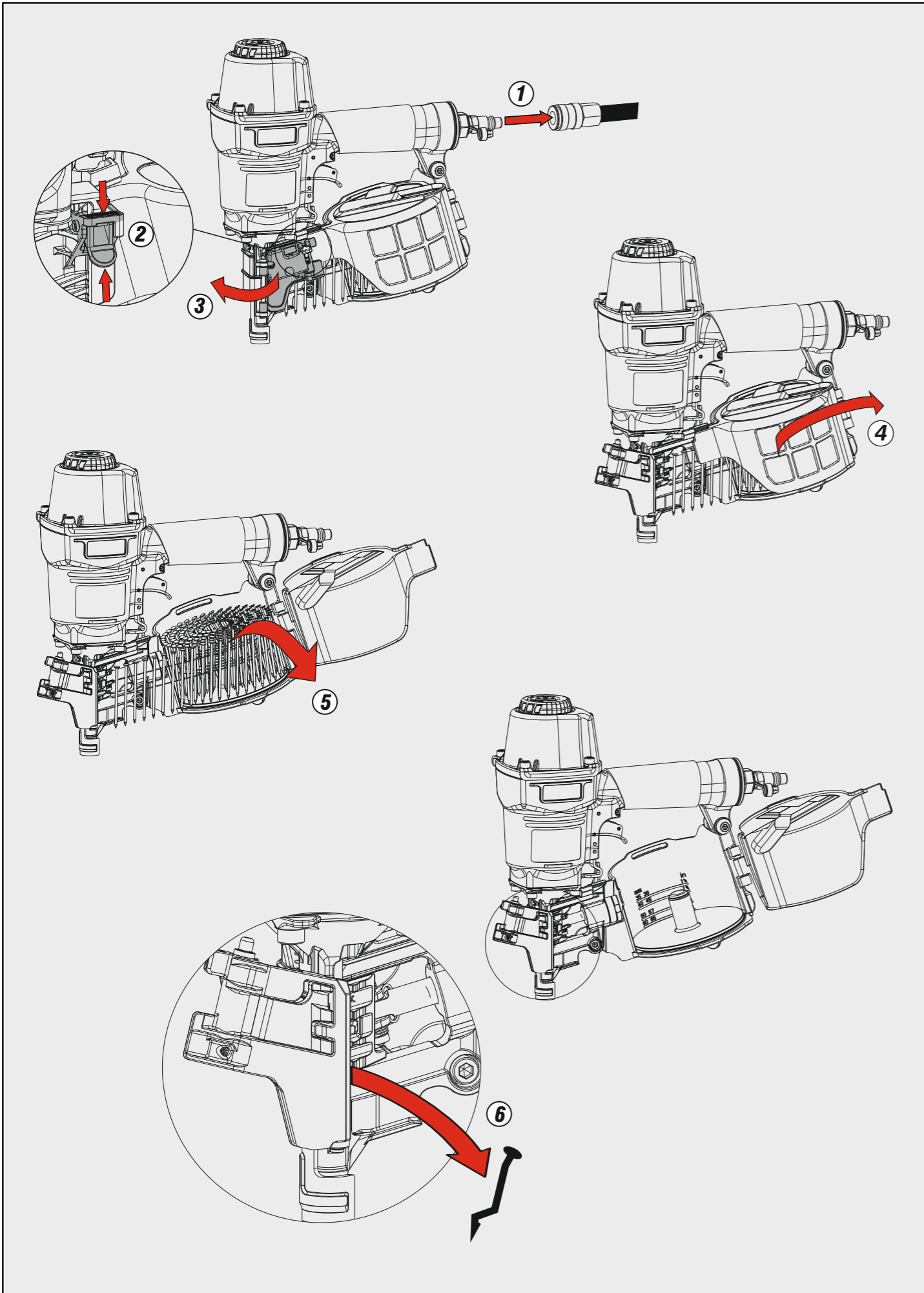


Guarnizioni - O-Rings - Dichtungen - Joints toriques - Juntas -
Δακτύλιος στεγανοποίησης - Vedantes - O-ringen - Contalar



Parti di ricambio - Spare parts - Ersatzteile - Pièces de rechange - Recambios
Ανταλλακτικά - Partes sobresselentes - Wisselstukken - Yedek parçalar

2MGN3145-K100

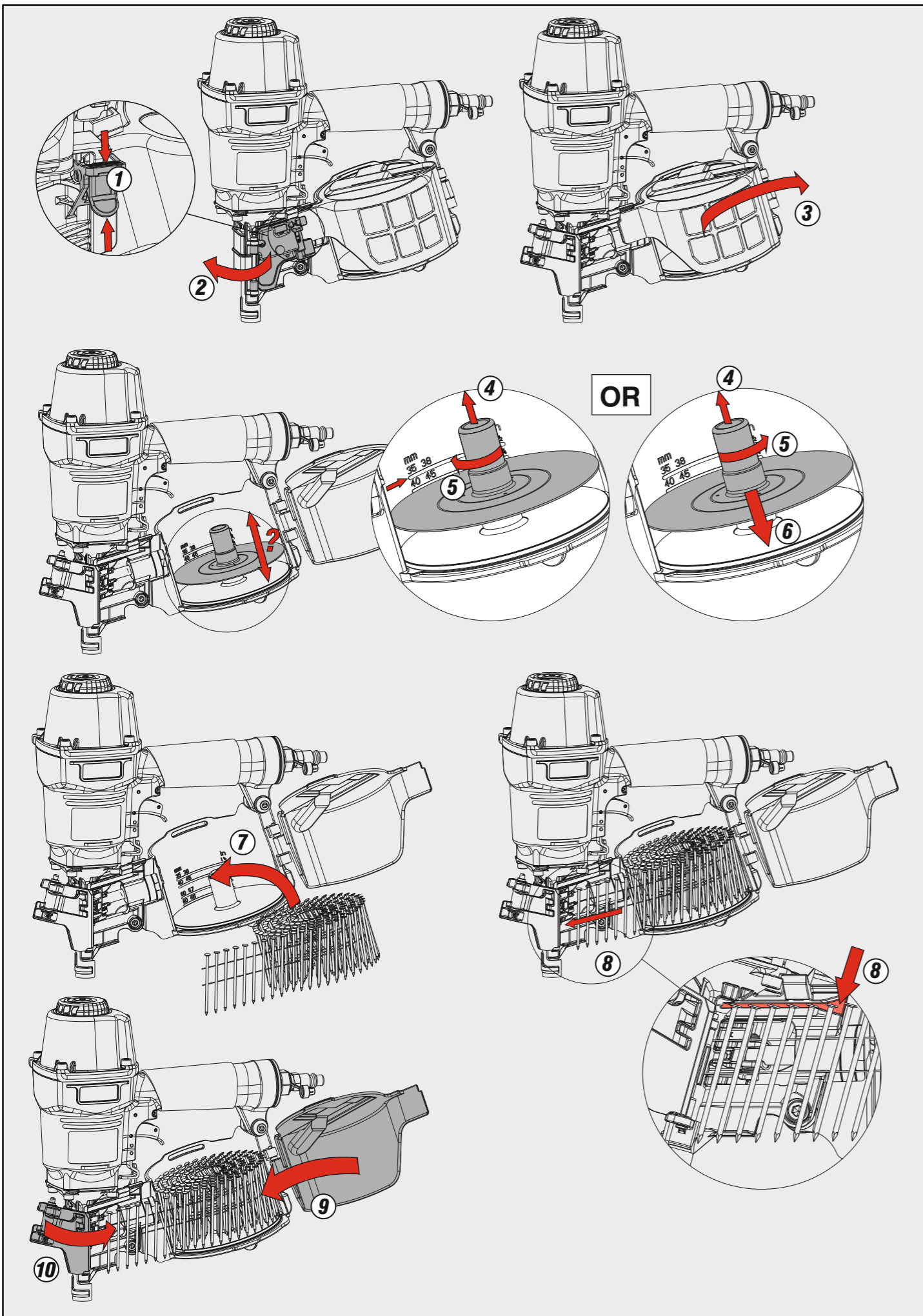


CN31.45

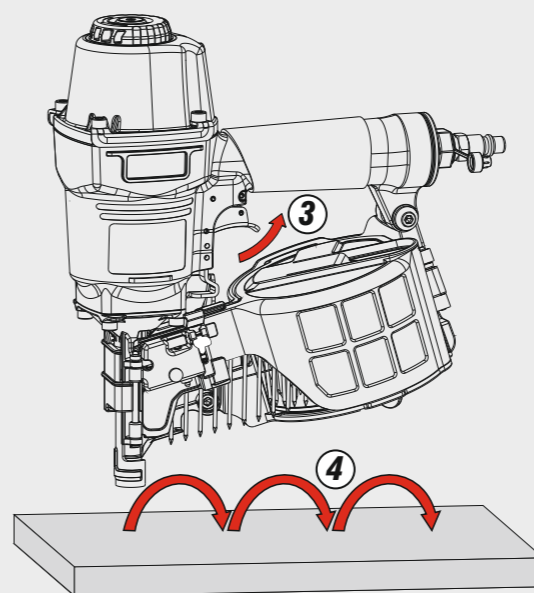
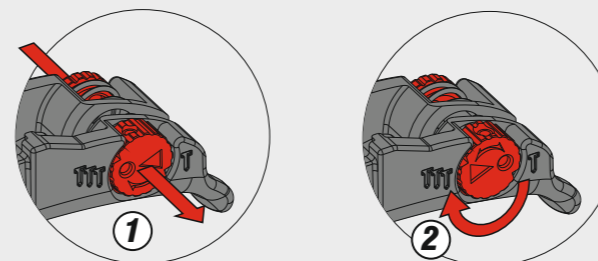
cod. 195MCN3145

Indice di modifica
 Upgrade number

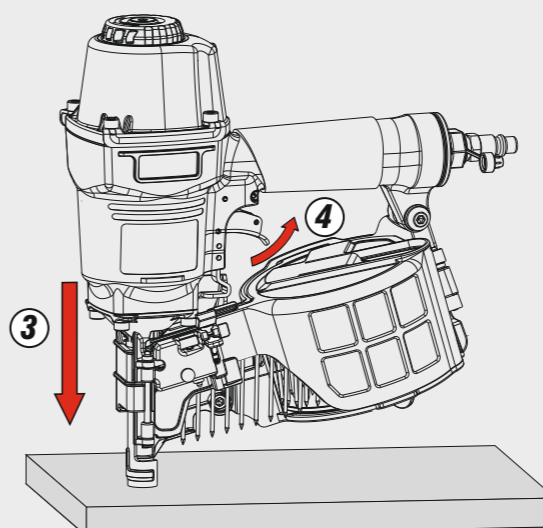
A2



Azionamento a contatto
Contact actuation



Oppure - Or



Azionamento sequenziale singolo
Single sequential actuation

